

CATNUM

Sample category
 16. AMI - Outpatient visit
 36. SCI Dx
 48. Female, age 20-69
 50. Random Sample
 51. Random Sample MH
 54. Frail/Elderly
 60. DM Outpatient
 61. Inpatient SC
 68. Contract CBOC

REVSTAT

REVIEW STATUS (not abstracted)
 0. Abstraction has not begun
 1. Abstraction in progress
 2. Abstraction completed w/o errors
 3. TVG failure (exclusion)
 4. Record contains missing required answers (error record)
 5. Administrative exclusion from all measures

FEFLAG (rcvd on pull list)
FE case flagged for CGPI review / scoring?

0. No
 1. Yes

DOCHOSPCE (PI module)Is one of the following documented in the medical record:

- the patient is enrolled in a VHA or community-based Hospice program
- the patient has a diagnosis of cancer of the liver, pancreas, or esophagus
- on the problem list it is documented the patient's life expectancy is less than 6 months?

1. Yes
 2. No

DEMENTDX2 (MH)

During the past year, does the record document a diagnosis of dementia/neurocognitive disorder as evidenced by one of the following:

ICD-9-CM codes (Prior to 10/01/15):

046.11, 046.19, 046.3, 290.0, 290.10, 290.11, 290.12, 290.13, 290.20, 290.21, 290.3, 290.40, 290.41, 290.42, 290.43, 291.2, 292.82, 294.10, 294.11, 294.8, 331.0, 331.11, 331.19, 331.2, 331.7, 331.82, 331.89, 331.9, 333.0 or 333.4

ICD-10-CM codes (On or after 10/01/15):

A8100, A8101, A8109, A812, A8189, A819, Primary I60xx – I69xx + Secondary F0150 or F0151, F0390, F0391, any Primary xxx.xx + Secondary F0280 or F0281, F0390, F0391, F1027, F1997, G231, G300, G301, G308, G309, G3101, G3109, G3183, G903

1. Yes
 2. No

DEMSEV (MH)

Was the severity of dementia assessed during the past year using one of the following standardized tools?

1. Clinical Dementia Rating Scale (CDR)
2. Functional Assessment Staging Tool (FAST)
3. Global Deterioration Scale (GDS)
99. Severity of dementia was not assessed during the past year using one of the specified tools

COGSCOR2 (MH)

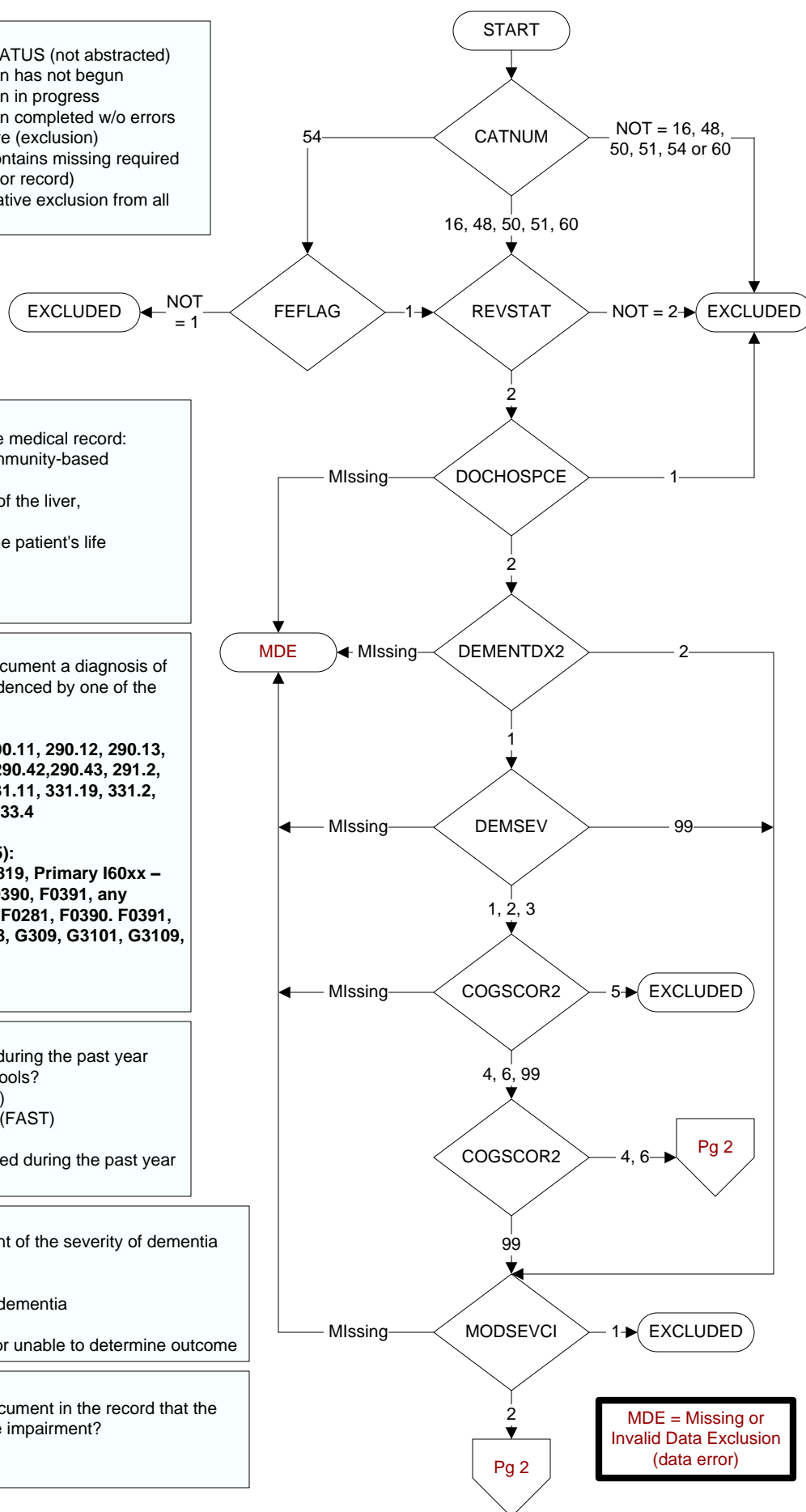
What was the outcome of the assessment of the severity of dementia assessment?

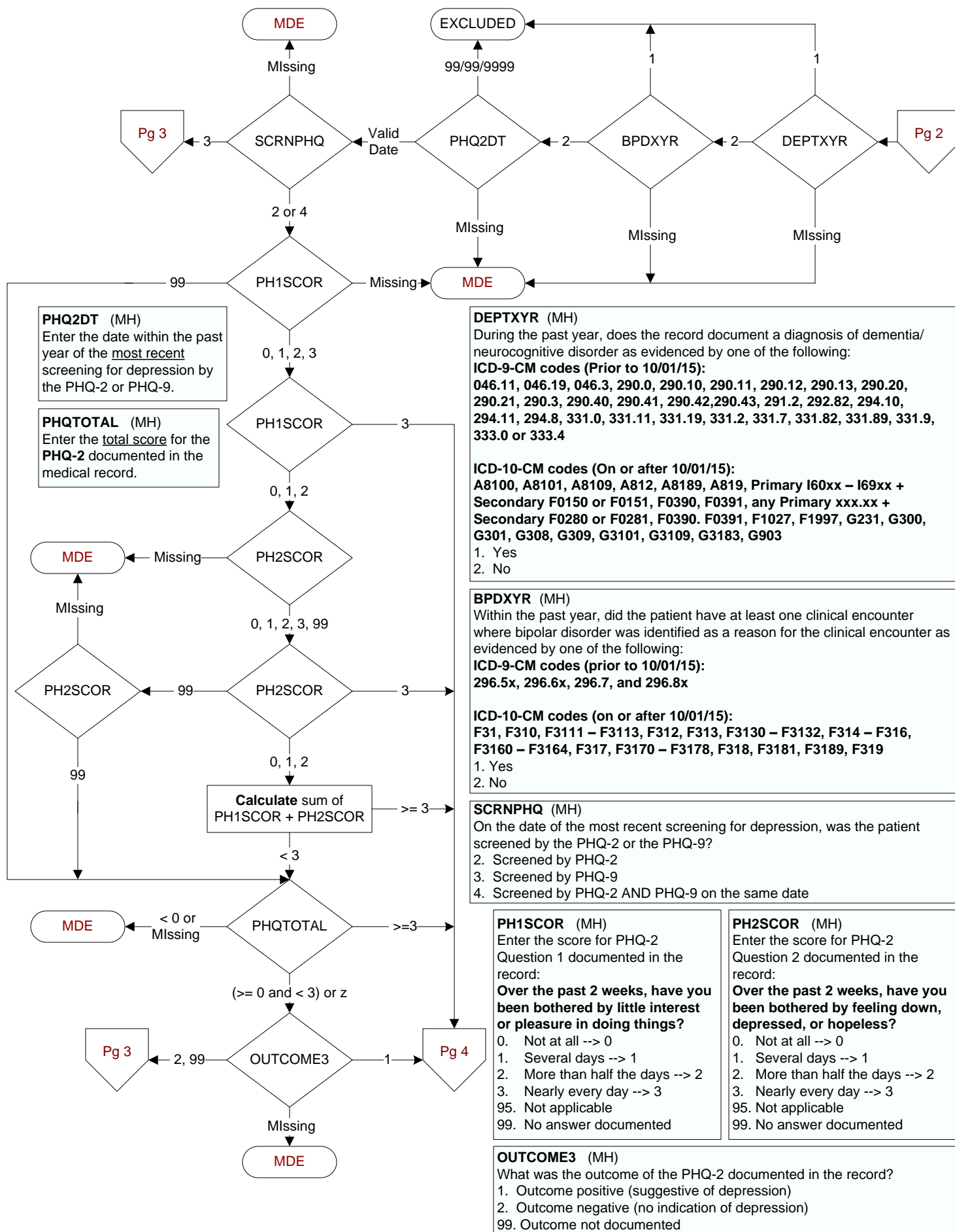
4. Score indicated mild dementia
5. Score indicated moderate to severe dementia
6. Score indicated no dementia
99. No score documented in the record or unable to determine outcome

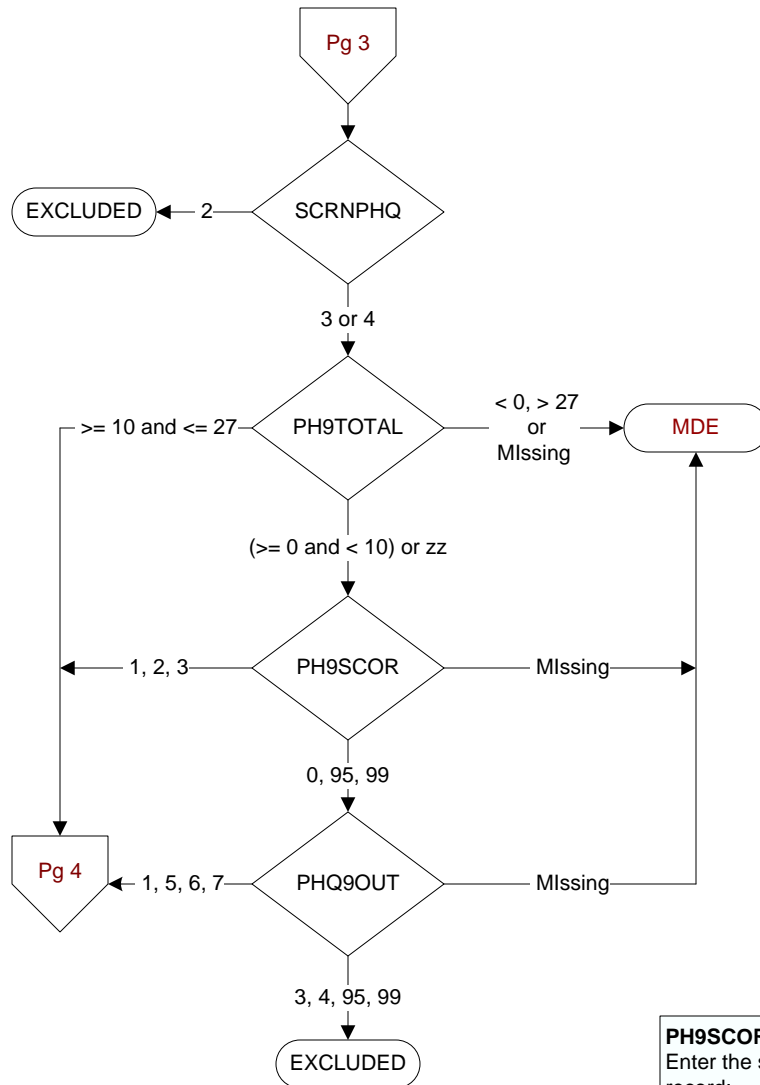
MODSEVCI (MH)

During the past year, did the clinician document in the record that the patient has moderate or severe cognitive impairment?

1. Yes
 2. No







PHQ9TOTAL (MH)
Enter the total score of the PHQ-9 documented in the record.

PH9SCOR (MH)
Enter the score for PHQ-9 Question 9 documented in the record:
Over the last 2 weeks, how often have you been bothered by thoughts that you would be better off dead, or of hurting yourself in some way?
0. Not at all --> 0
1. Several days --> 1
2. More than half the days --> 2
3. Nearly every day --> 3
95. Not applicable
99. No answer documented

PHQ9OUT (MH)
Was the outcome of the PHQ-9 documented in the medical record?
1. Outcome positive
3. Score suggestive of no depression
4. Score suggestive of mild depression
5. Score suggestive of moderate depression
6. Score suggestive of moderately severe depression
7. Score suggestive of severe depression
95. Not applicable
99. No documentation of outcome

DEPEVAL (MH)

Following the positive PHQ-2 or PHQ-9 or affirmative answer to PHQ-9 question 9, did the provider document the patient needed further intervention?

1. Yes, documented further intervention needed
2. Documented no further intervention needed
99. No documentation regarding further intervention

NODEPINT (MH)

Following the positive PHQ-2 or PHQ-9 or affirmative answer to PHQ-9 question 9, did the provider document the patient refused further evaluation/treatment for depression?

1. Yes
2. No

DEPCARE (MH)

Following the positive PHQ-2 or PHQ-9 or affirmative answer to PHQ-9 question 9, did the provider document the patient was already receiving recommended care for depression?

1. Yes
2. No

DECAROUT (MH)

Following the positive PHQ-2 or PHQ-9 or affirmative answer to PHQ-9 question 9, did the provider document the patient was to receive care for depression outside this VA?

1. Yes
2. No

DEPMHEVL (MH)

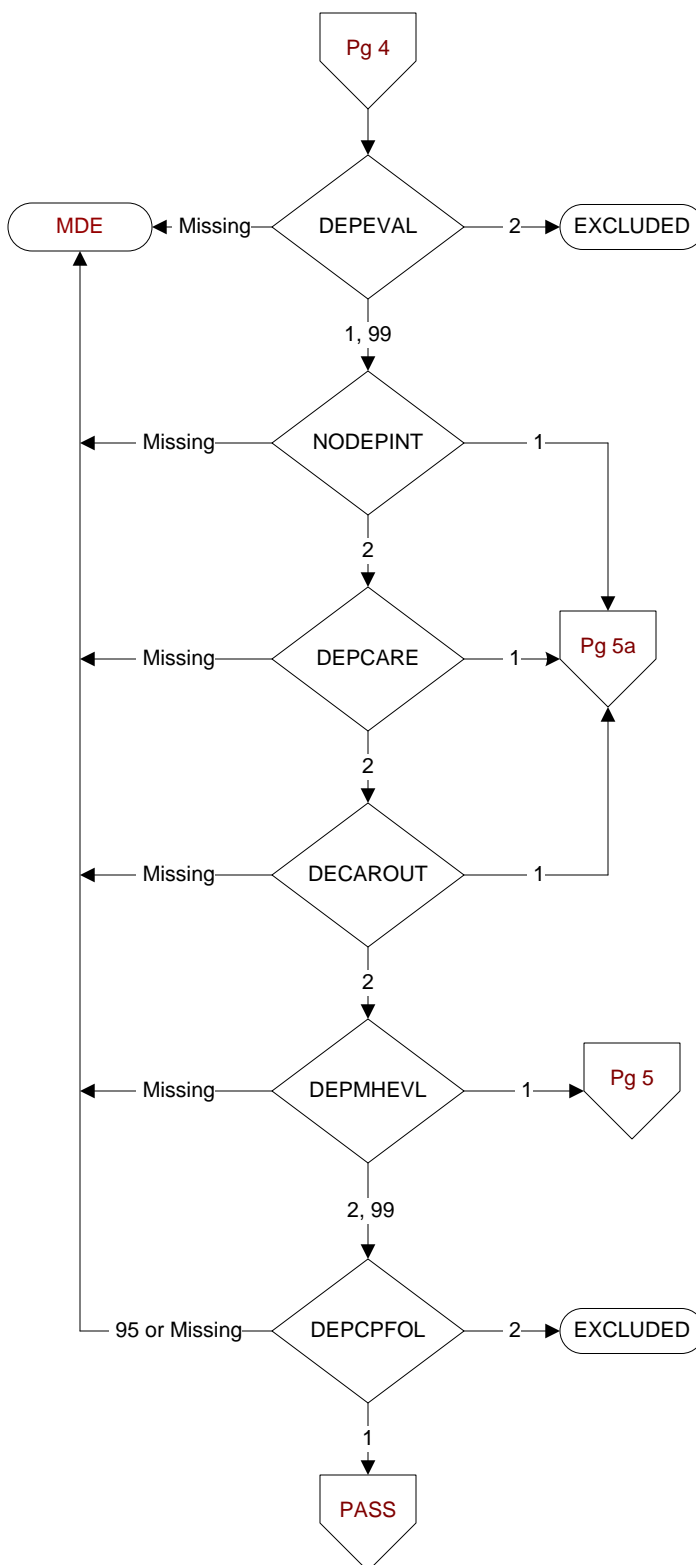
Following the positive PHQ-2 or PHQ-9 or affirmative answer to PHQ-9 question 9, did the provider document that the patient needed a mental health evaluation?

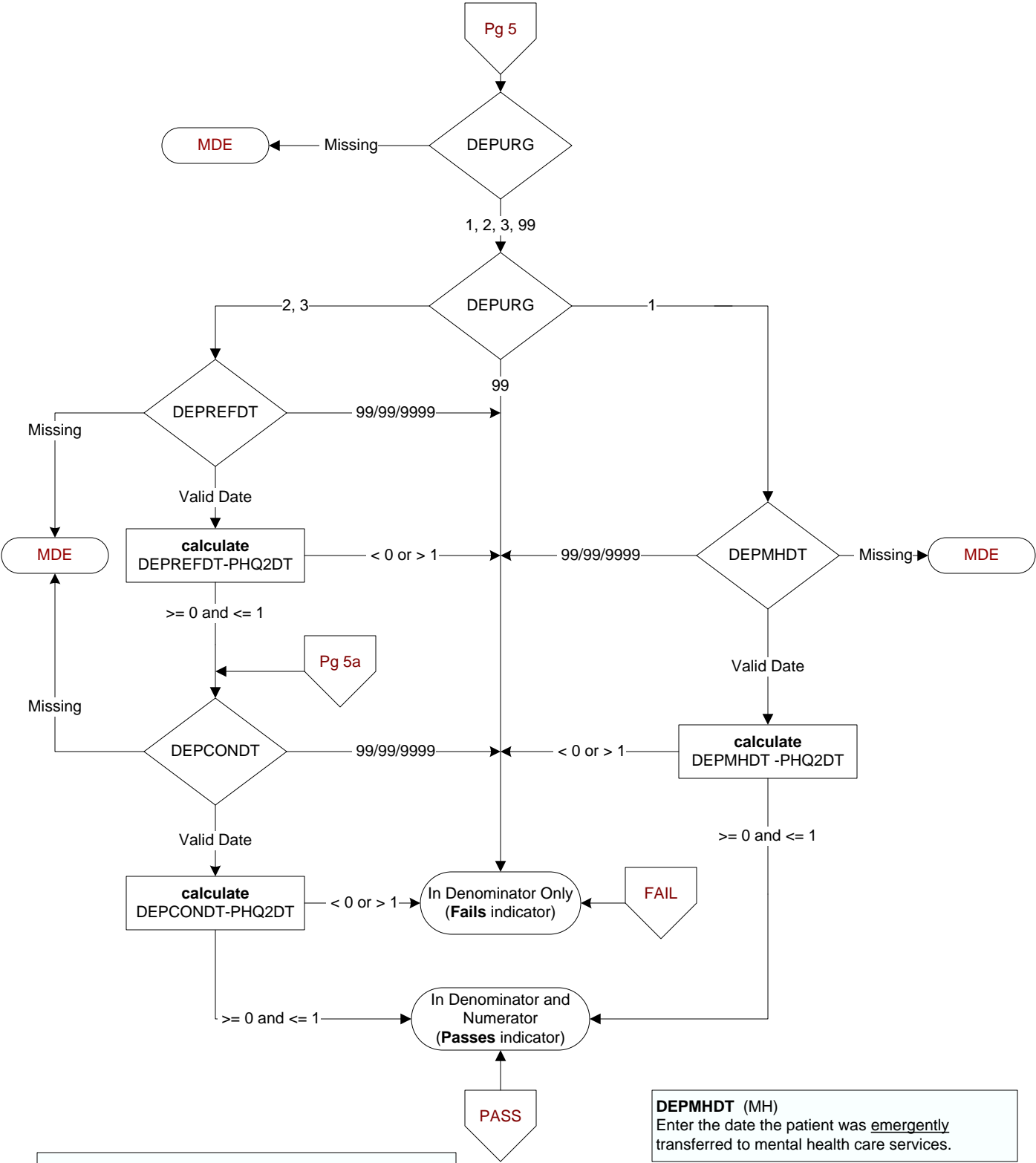
1. Yes, mental health evaluation needed
2. No mental health evaluation needed
99. No documentation regarding mental health evaluation

DEPCPFOL (MH)

Following the positive PHQ-2 or PHQ-9 or affirmative answer to PHQ-9 question 9, did the provider document that the patient will follow-up with a primary care provider?

1. Yes
2. No
95. Not applicable





DEPURG (MH)
Following the positive PHQ-2 or PHQ-9 or affirmative answer to question 9, did the provider document the urgency of the mental health evaluation?

1. Immediate/emergent mental health evaluation needed
2. Urgent mental health evaluation needed
3. Non-urgent mental health evaluation needed
99. No documentation of urgency of care

DEPMHDT (MH)
Enter the date the patient was emergently transferred to mental health care services.

DEPREFDT (MH)
Enter the date the mental health consult was placed.

DEPCOND (MH)
Enter the date the provider documented contact information was provided to the patient.