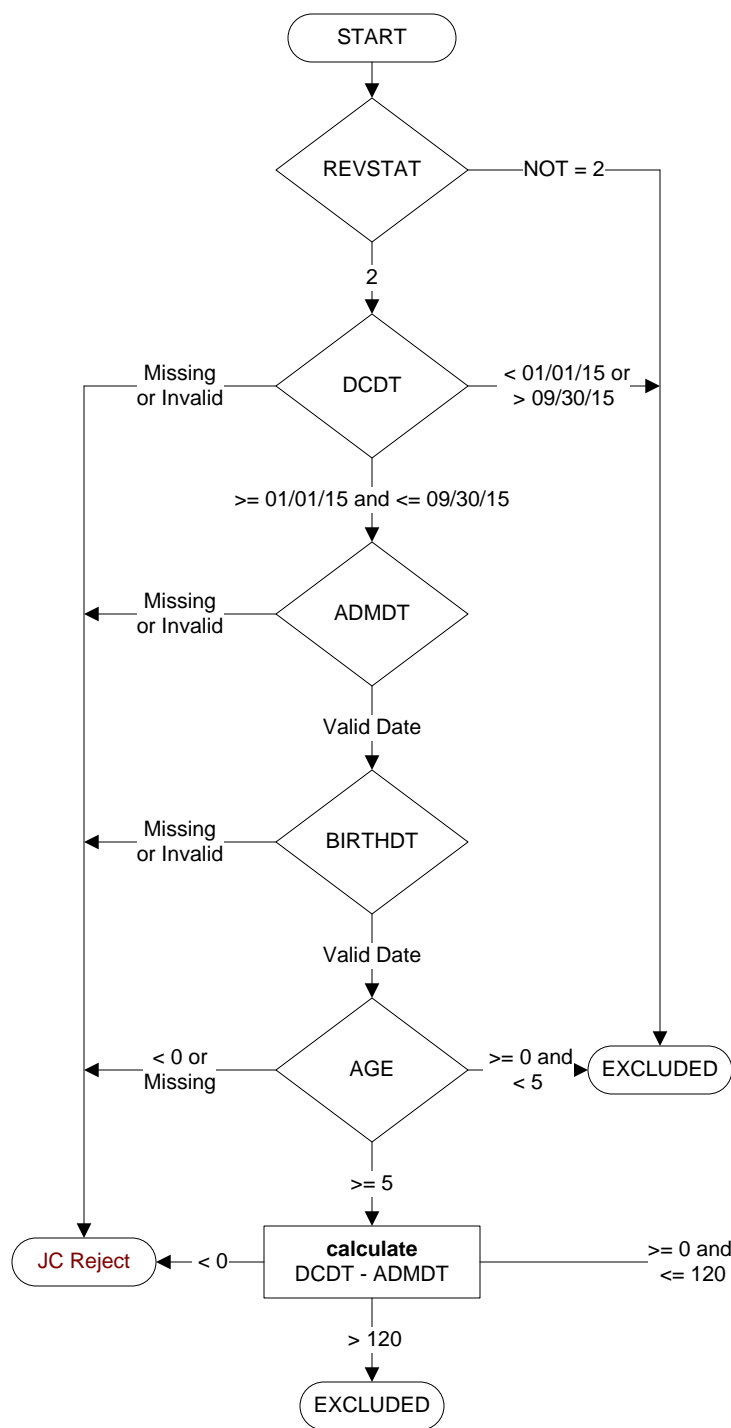


Global 1q16 - IMM3 - Pneumococcal Immunization (PPV23) High Risk Populations (Age 5 through 64 years) (IMM-1c)



**REVSTAT**

REVIEW STATUS (calculated)

0. Abstraction has not begun
1. Abstraction in progress
2. Abstraction completed w/o errors
3. TVG failure (exclusion)
4. Record contains missing required answers (error record)
5. Administrative Exclusion

**DCDT** (Global Measures)

Discharge date (rcvd on pull list and may not be modified)

**ADMDT** (Global Measures)

Admission date:

**BIRTHDT** (Global Measures)

Patient date of birth

**AGE** (Calculated)

ADMDT - BIRTHDT

**COGIMP** (Global Measures)

Is there documentation in the medical record that indicates the patient is cognitively impaired?

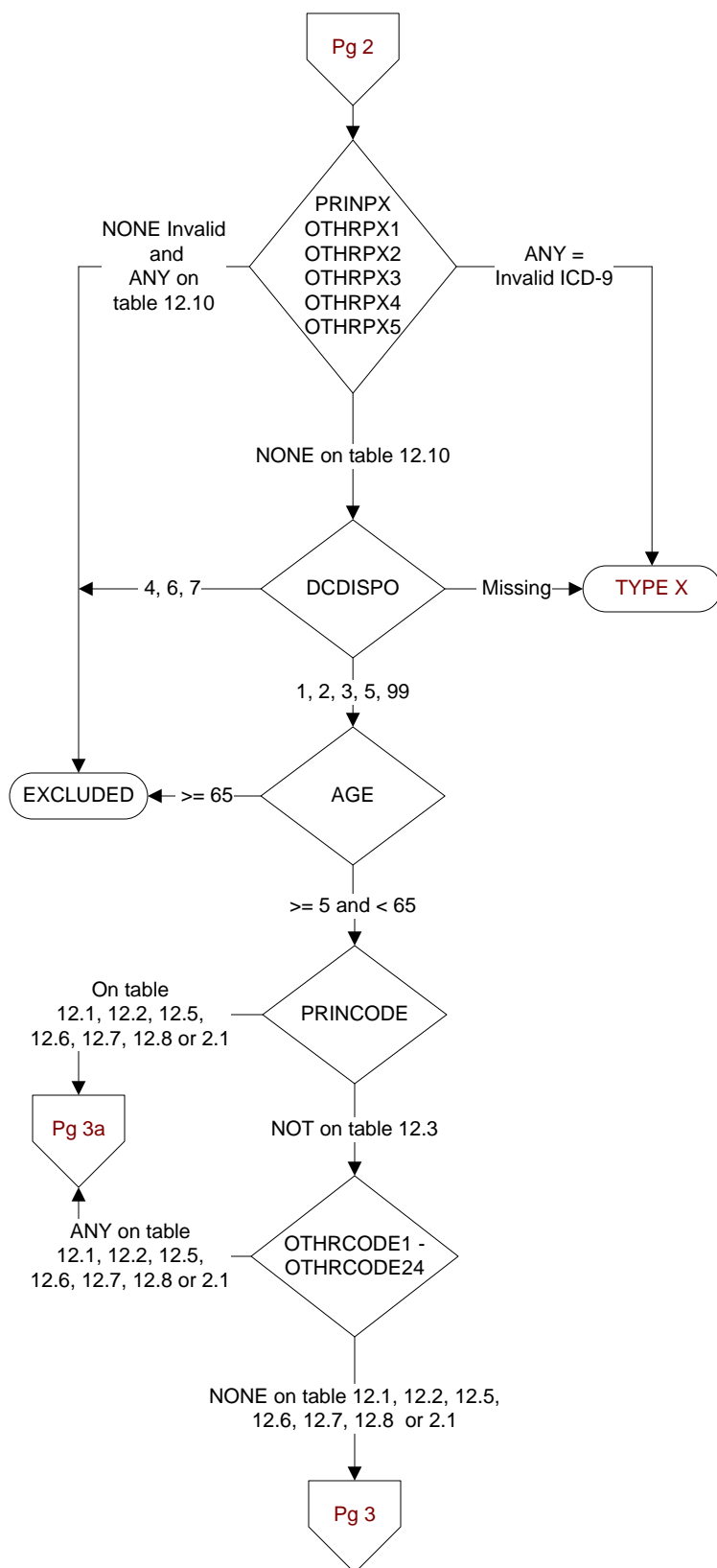
1. Yes
2. No

**PRINCODE** (Global Measures)

Enter the ICD-9-CM principal diagnosis code.

**OTHRCODE1-24** (Global Measures)

Enter the ICD-9-CM other diagnosis codes:



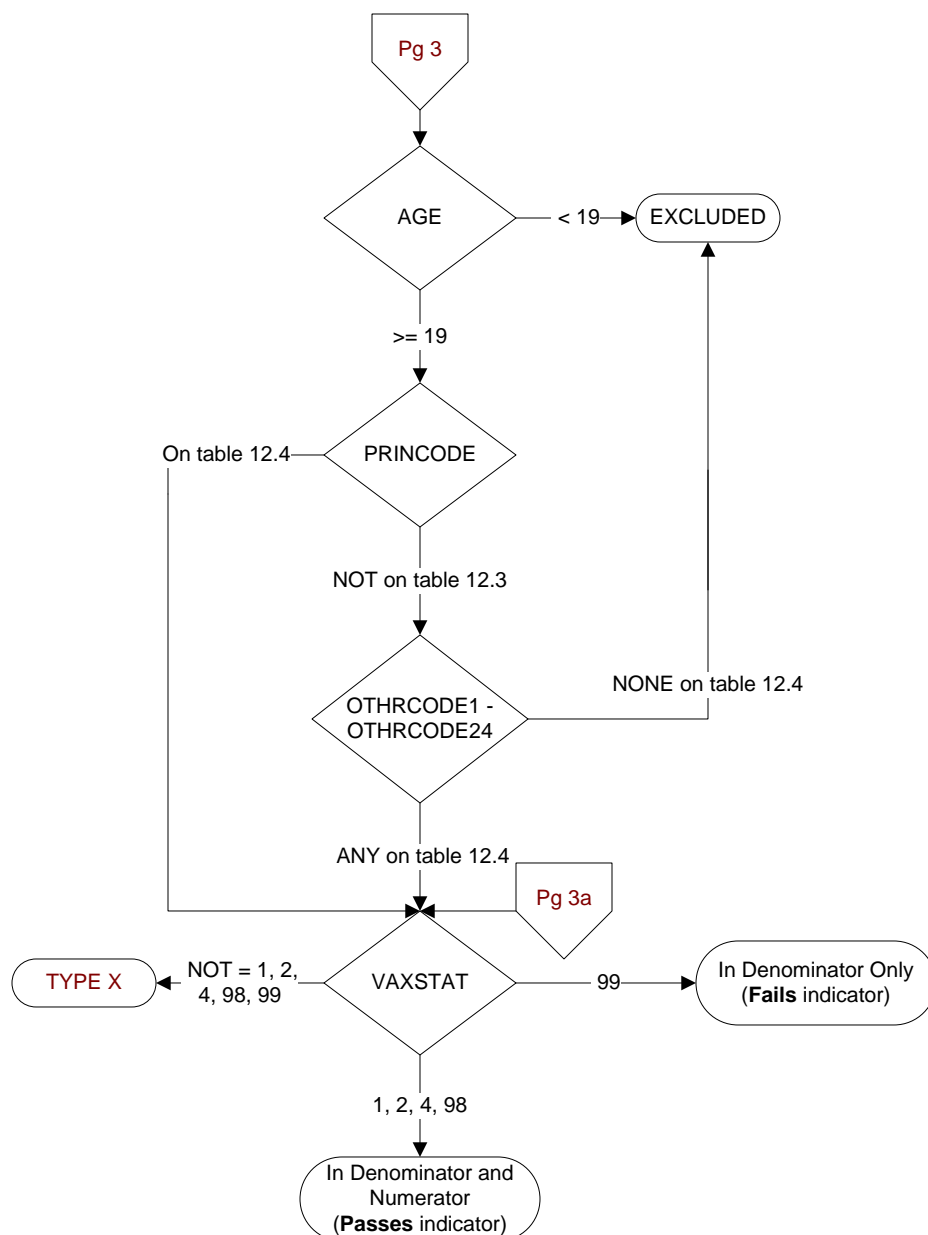
**PRINPX** (Global Measures)  
Enter the ICD-9-CM principal procedure code

**OTHRPX1-5** (Global Measures)  
Enter the ICD-9-CM other procedure codes

**DCDISPO** (Global Measures)

What was the patient's discharge disposition on the day of discharge?

1. Home
  - Assisted Living Facilities (ALFs) - includes assisted living care at nursing home/facility
  - Court/Law Enforcement -- includes detention facilities, jails, and prison
  - Home -- includes board and care, domiciliary, foster or residential care, group or personal care homes, retirement communities, and homeless shelters
  - Home with Home Health Services
  - Outpatient Services including outpatient procedures at another hospital, outpatient Chemical Dependency Programs and Partial Hospitalization
2. Hospice -- Home (or other home setting as listed in #1 above)
3. Hospice -- Health Care Facility
  - General Inpatient and Respite, Residential and Skilled Facilities, and Other Health Care Facilities
4. Acute Care Facility
  - Acute Short Term General and Critical Access Hospitals
  - Cancer and Children's Hospitals
  - Department of Defense and Veteran's Administration Hospitals
5. Other Health Care Facility
  - Extended or Immediate Care Facility (ECF/ICF)
  - Long Term Acute Care Hospital (LTACH)
  - Nursing Home or Facility including Veteran's Administration Nursing Facility
  - Psychiatric Hospital or Psychiatric Unit of a Hospital
  - Rehabilitation Facility including Inpatient Rehabilitation Facility/Hospital or Rehabilitation Unit of a Hospital
  - Skilled Nursing Facility (SNF), Sub-Acute Care or Swing Bed
  - Transitional Care Unit (TCU)
  - Veteran's Home
6. Expired
7. Left Against Medical Advice/AMA
99. Not documented or unable to determine

**VAXSTAT** (Global Measures)

What is the patient's pneumococcal vaccination status?

1. Pneumococcal vaccination was given during this hospitalization
2. Pneumococcal vaccination was received in the past, not during this hospitalization

## 4. Documentation of:

- Allergy/sensitivity to pneumococcal vaccine, OR
- Is not likely to be effective because of bone marrow transplant (or autologous stem cell transplant, ASCT) within the past 12 months, OR
- Currently receiving a scheduled course of chemotherapy or radiation therapy, or received a chemotherapy or radiation during this hospitalization or less than 2 weeks prior, OR
- Received the shingles vaccine (Zostavax) within the last 4 weeks

95. Not applicable

98. Documentation of patient's or caregiver's refusal of pneumococcal vaccine

99. None of the above/not documented/unable to determine from medical record documentation