

CATNUM
Sample category
57. OEF/OIF scrnd TBI+

REVSTAT
REVIEW STATUS (not abstracted)
0. Abstraction has not begun
1. Abstraction in progress
2. Abstraction completed w/o errors
3. TVG failure (exclusion)
4. Record contains missing required answers (error record)
5. Administrative exclusion from all measures

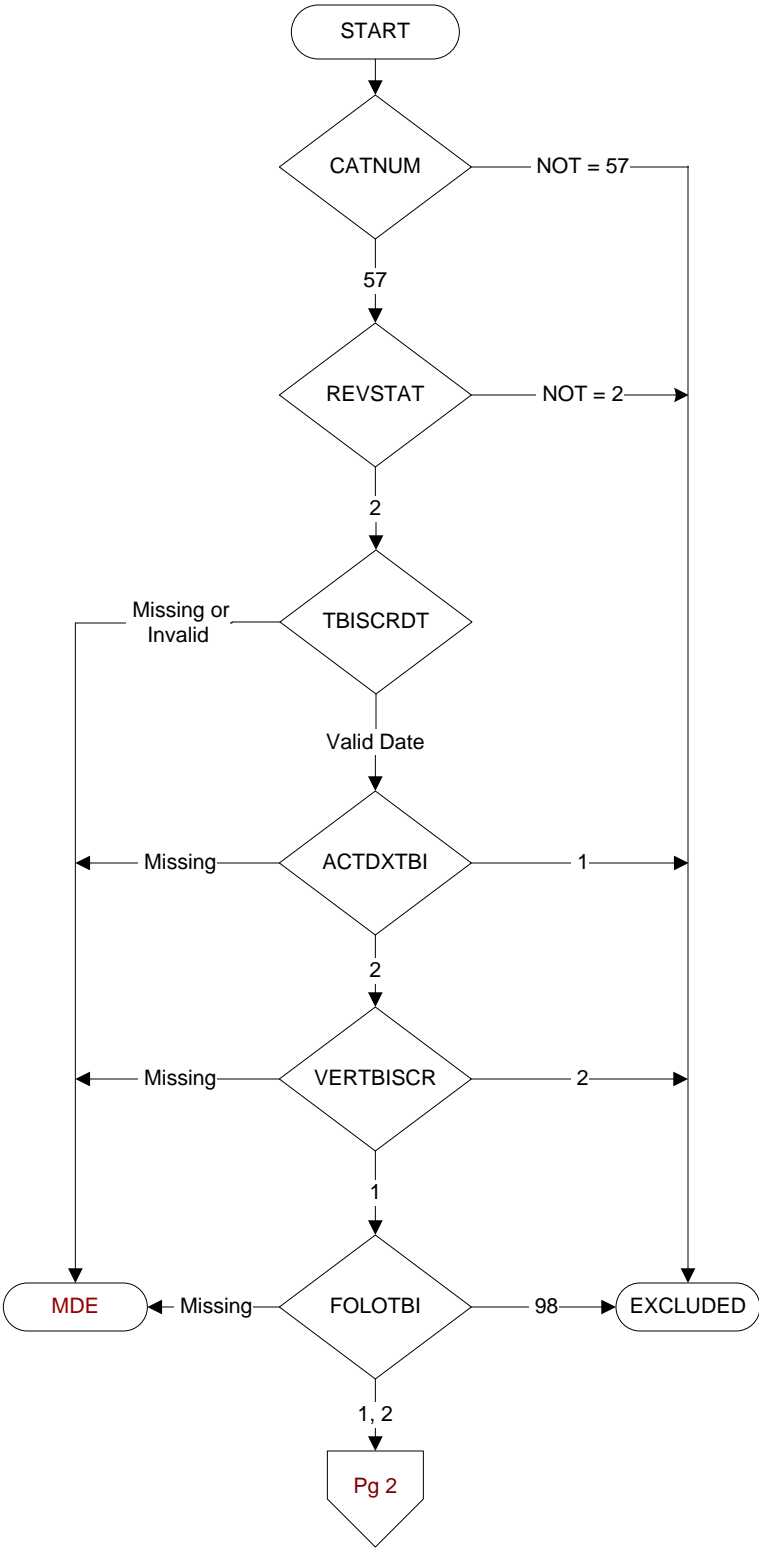
TBISCRDT (TBI)
Enter the date of the most recent positive screening for Traumatic Brain Injury.

ACTDXTBI (TBI)
Prior to the most recent positive TBI screen, was there evidence in the record that the veteran had a pre-existing diagnosis of Traumatic Brain Injury prior to the TBI Screen?
1. Yes
2. No

VERTBISCR (TBI)
On (computer to display tbiscrdt), is there documentation of a positive TBI screen in a progress note?
1. Yes
2. No

FOLOTBI (TBI)
Following the positive TBI screen, was a consult placed for a Comprehensive TBI Evaluation appointment?
1. Yes
2. No
98. Patient refused consult

MDE = Missing or Invalid Data Exclusion (data error)



COM2EVAL (TBI)

During the timeframe following the positive TBI screen up to and including the pull list date, does the record document a Comprehensive TBI Evaluation was completed by a licensed independent medical provider?

1. Yes
2. No

(TBI) Is there documentation the Comprehensive TBI Evaluation included the following components?

Components

SEC1EVAL Injury etiology (origin)

SEC2EVAL Neurobehavioral Symptom Inventory (NSI)

SEC3EVAL Targeted Physical Exam

SEC4EVAL Treatment Plan

1. Yes
2. No

FOEVALDT (TBI)

Enter the date the Comprehensive TBI Evaluation was completed following the positive TBI screen.

APPTLATR (TBI)

During the timeframe from (computer to display tbiscrdt to tbiscrdt + 30 days), does the record document the patient requested an appointment greater than 30 days from the positive TBI screen date?

1. Yes
2. No

SCHAPPT (TBI)

Was an appointment for the Comprehensive TBI Evaluation scheduled during the 30 days after the positive TBI screen?

1. Yes
2. No

NOSHOW (TBI)

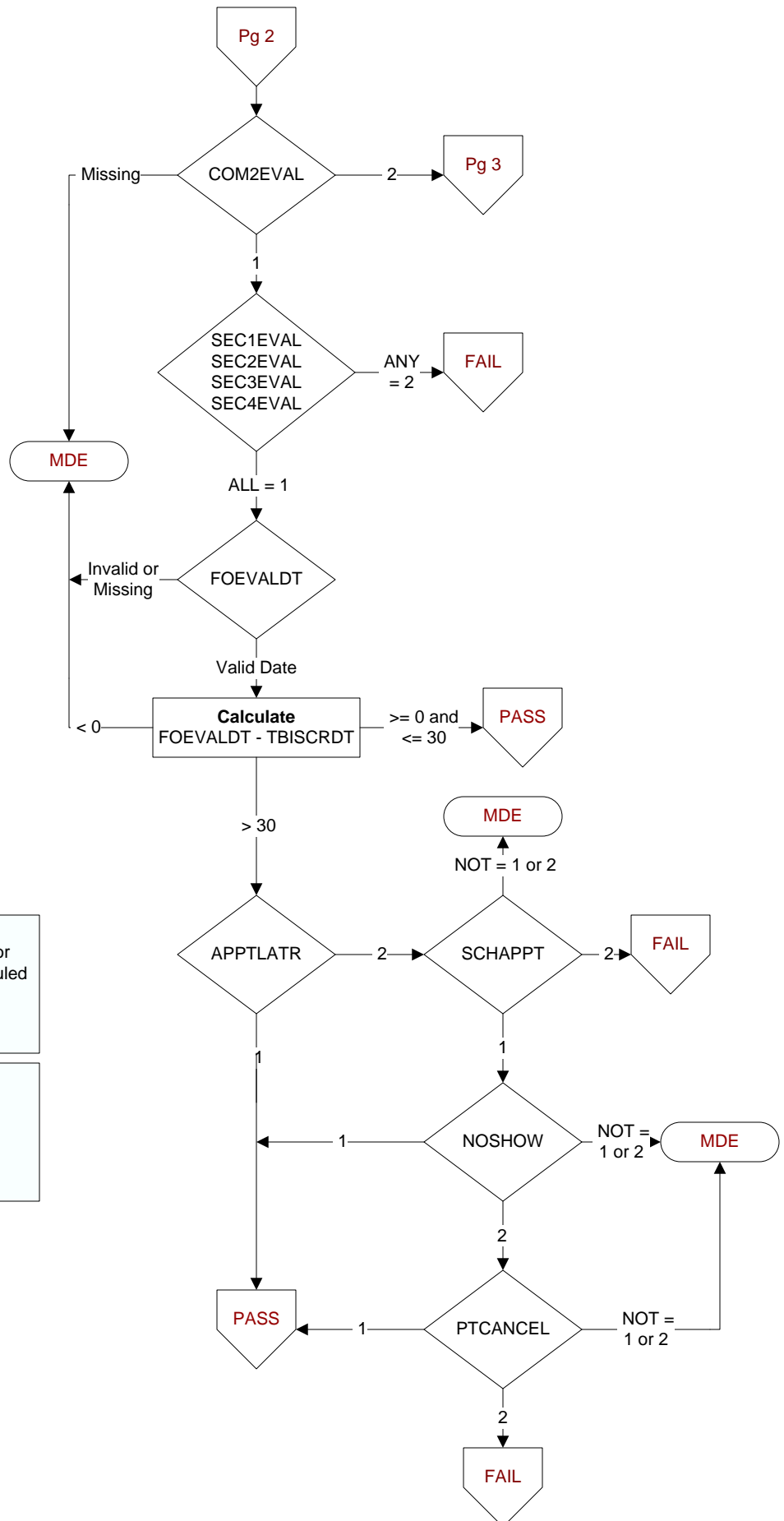
Does the record document the patient was a no show for the Comprehensive TBI Evaluation appointment scheduled during the 30 days after the positive TBI screen?

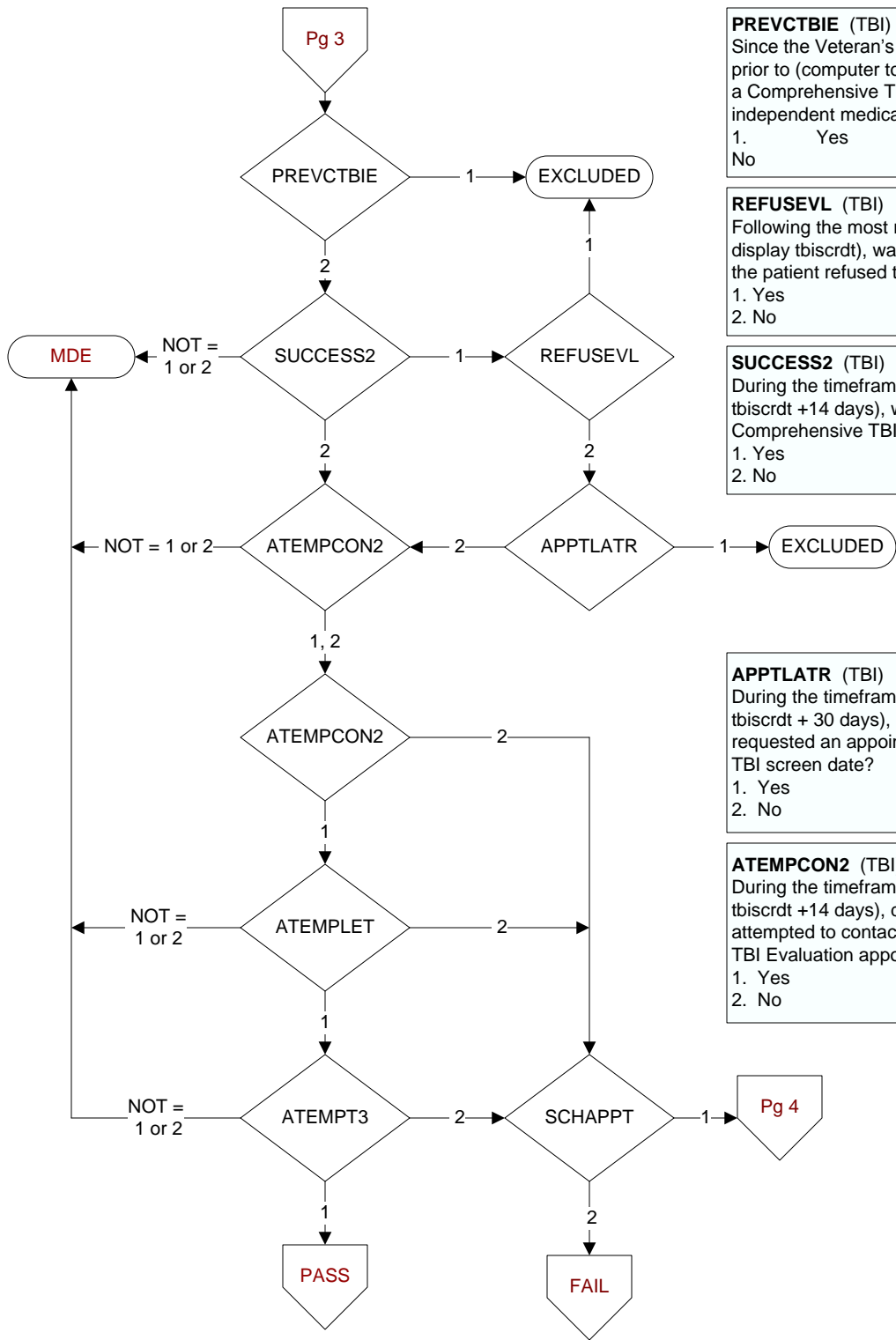
1. Yes
2. No

PTCANCEL (TBI)

Does the record document the patient cancelled the Comprehensive TBI Evaluation appointment scheduled during the 30 days after the positive TBI screen?

1. Yes
2. No





PREVTBIE (TBI)

Since the Veteran's most recent service separation date and prior to (computer to display tbiscrdt), does the record document a Comprehensive TBI Evaluation was completed by a licensed independent medical provider?

1. Yes
- No

REFUSEVL (TBI)

Following the most recent TBI screen date on (computer to display tbiscrdt), was there evidence in the medical record that the patient refused the Comprehensive TBI Evaluation?

1. Yes
2. No

SUCCESS2 (TBI)

During the timeframe from (computer to display tbiscrdt to tbiscrdt +14 days), was the patient successfully notified of the Comprehensive TBI Evaluation appointment date?

1. Yes
2. No

APPTLATR (TBI)

During the timeframe from (computer to display tbiscrdt to tbiscrdt + 30 days), does the record document the patient requested an appointment greater than 30 days from the positive TBI screen date?

1. Yes
2. No

ATEMPCON2 (TBI)

During the timeframe from (computer to display tbiscrdt to tbiscrdt +14 days), does the record document the facility attempted to contact the patient regarding the Comprehensive TBI Evaluation appointment?

1. Yes
2. No

ATEMP3 (TBI)

During the timeframe from (computer to display tbiscrdt to tbiscrdt +14 days), were at least three contact attempts made by telephone or secure messaging?

1. Yes
2. No

SCHAPPT (TBI)

Was an appointment for the Comprehensive TBI Evaluation scheduled during the 30 days after the positive TBI screen?

1. Yes
2. No

ATEMPLET (TBI)

During the timeframe from (computer to display tbiscrdt to tbiscrdt +14 days), was one contact attempt made by certified letter?

1. Yes
2. No

