

# **REVSTAT**

REVIEW STATUS (not abstracted)

0. Abstraction has not begun
1. Abstraction in progress
2. Abstraction completed w/o errors
3. TVG failure (exclusion)
4. Record contains missing required answers (error record)
5. Administrative exclusion from all measures

## **TRUAMI** (Validation)

Is there evidence in the medical record that the patient had an acute myocardial infarction?

1. yes
2. no

## **DCDATE** (Validation)

Enter the date of discharge. (received on pull list and may not be modified)

## **ADMDT** (Validation)

Enter the date the patient was formally admitted to inpatient status at this VAMC. (received on pull list , but is modifiable by the abstractor.)

## **BIRTHDT**

Patients date of birth. (received on pull list, but is modifiable by the abstractor.)

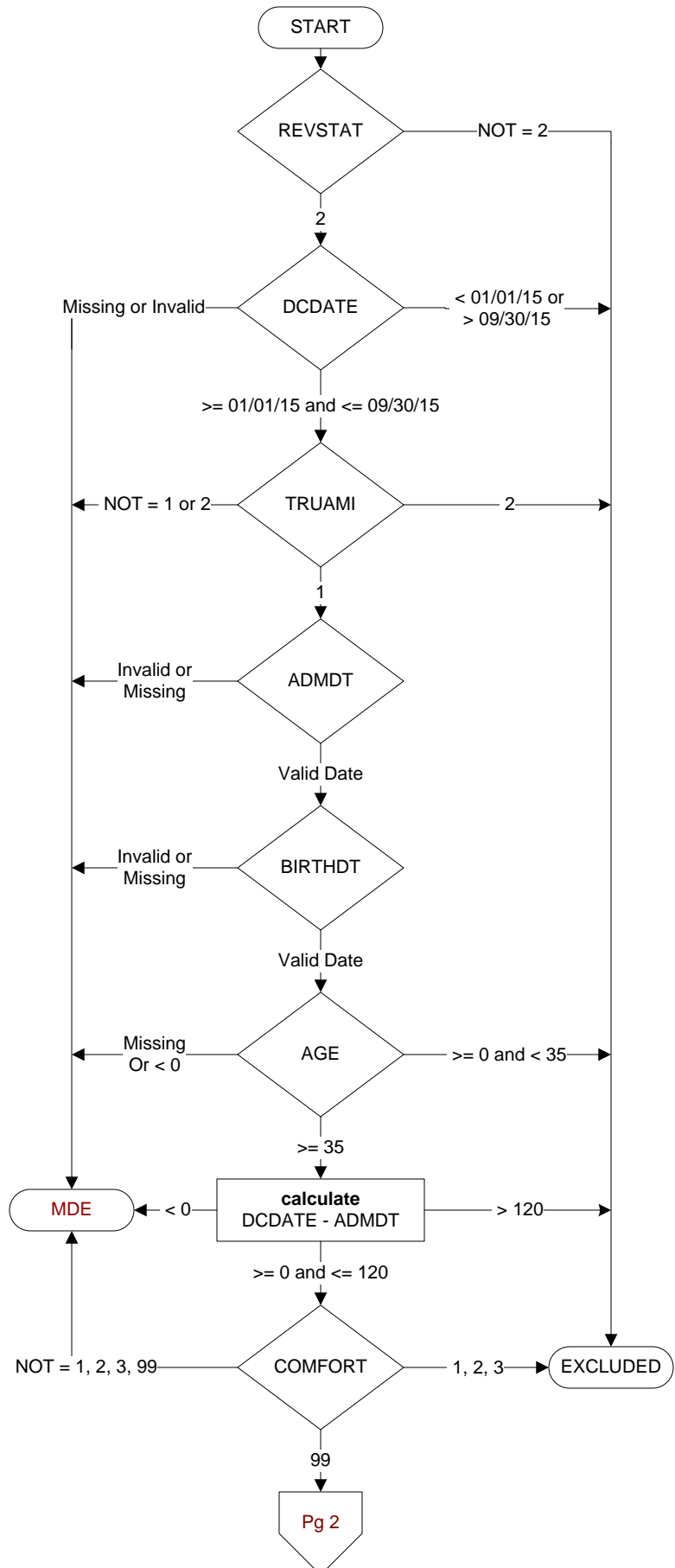
## **AGE**

AGE (in years) = ADMDT - BIRTHDT

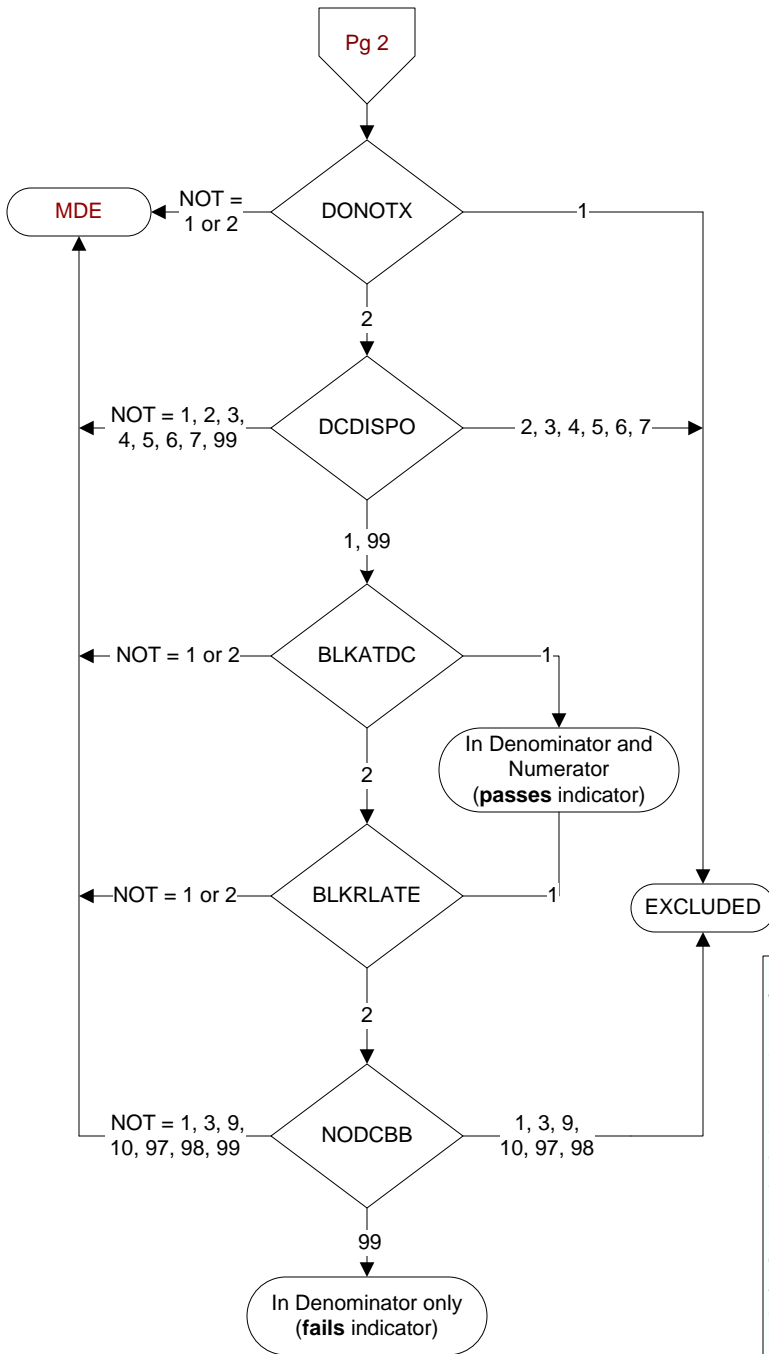
## **COMFORT** (Validation)

When is the earliest physician, APN, or PA documentation of comfort measures only?

1. Day of arrival (day 0) or day after arrival (day 1)
2. Two or more days after arrival (day 2 or greater)
3. Comfort measures only documented during hospital stay, but timing unclear
99. Comfort measures only was not documented by the physician/APN/PA or unable to determine



**MDE = Missing or Invalid Data Exclusion (data error)**



#### DONOTX (Validation)

Is there explicit documentation of the decision not to treat during this episode of care?

1. Yes
2. No
95. Not applicable

#### NODCBB (Discharge)

Does the record document any of the following reasons for not prescribing a beta-blocker at discharge?

1. Beta-blocker allergy
3. Second or third-degree heart block on ECG on arrival or during hospitalization and does not have a pacemaker
9. Post-heart transplant patient
10. Severely decompensated heart failure documented by physician/APN/PA
95. Not applicable
97. Other reasons documented by a physician/APN/PA or pharmacist for not prescribing a beta-blocker at discharge
98. Patient refusal of beta-blockers documented by physician/APN/PA or pharmacist
99. No documented reason

#### BLKATDC (Discharge)

Was the patient prescribed a beta-blocker at discharge?

Examples of beta-blockers include but are not limited to:

- metoprolol succinate or tartrate
- carvedilol
- atenolol
- nadolol
- propranolol
- combination of beta-blockers with other drugs

1. yes
2. no

#### DCDISPO (Validation)

What was the patient's discharge disposition on the day of discharge?

1. Home
  - Assisted Living Facilities (ALFs) - includes assisted living care at nursing home facility
  - Court/Law Enforcement – includes detention facilities, jails, and prison
  - Home - includes board and care, domiciliary, foster or residential care, group or personal care homes, retirement communities, and homeless shelters
  - Home with Home Health Services
  - Outpatient Services including outpatient procedures at another hospital, outpatient Chemical Dependency Programs and Partial Hospitalization
2. Hospice – Home (or other home setting as listed in #1 above)
3. Hospice – Health Care Facility
  - General Inpatient and Respite, Residential and Skilled Facilities, and Other Health Care Facilities
4. Acute Care Facility
  - Acute Short Term General and Critical Access Hospitals
  - Cancer and Children's Hospitals
  - Department of Defense and Veteran's Administration Hospitals
5. Other Health Care Facility
  - Extended or Immediate Care Facility (ECF/ICF)
  - Long Term Acute Care Hospital (LTACH)
  - Nursing Home or Facility including Veteran's Administration Nursing Facility
  - Psychiatric Hospital or Psychiatric Unit of a Hospital
  - Rehabilitation Facility including Inpatient Rehabilitation Facility/Hospital or Rehabilitation Unit of a Hospital
  - Skilled Nursing Facility (SNF), Sub-Acute Care or Swing Bed
  - Transitional Care Unit (TCU)
  - Veteran's Home
6. Expired
7. Left Against Medical Advice/AMA
99. Not documented or unable to determine

#### BLKRLATE (Discharge)

Was the patient prescribed a beta-blocker within seven days post-discharge?

1. yes
2. no
95. not applicable