

REVSTAT

REVIEW STATUS (not abstracted)

0. Abstraction has not begun
1. Abstraction in progress
2. Abstraction completed w/o errors
3. TVG failure (exclusion)
4. Record contains missing required answers (error record)
5. Administrative Exclusion

HCSTATUS (HBPC)

Counting from the most recent HBPC encounter within the study interval, enter the patient's status in regard to HBPC admission:

2. HBPC admission greater than or equal to 30 days but less than or equal to 1 year
3. HBPC admission greater than one year (>365 days from the admission date)

ENVASES (HBPC)

Was a home environmental safety/ risk assessment documented by a rehabilitation therapist during a face-to-face encounter within 30 days of HBPC admission date?

1. Yes
2. No

ENVOXY (HBPC)

Was the patient oxygen dependent?

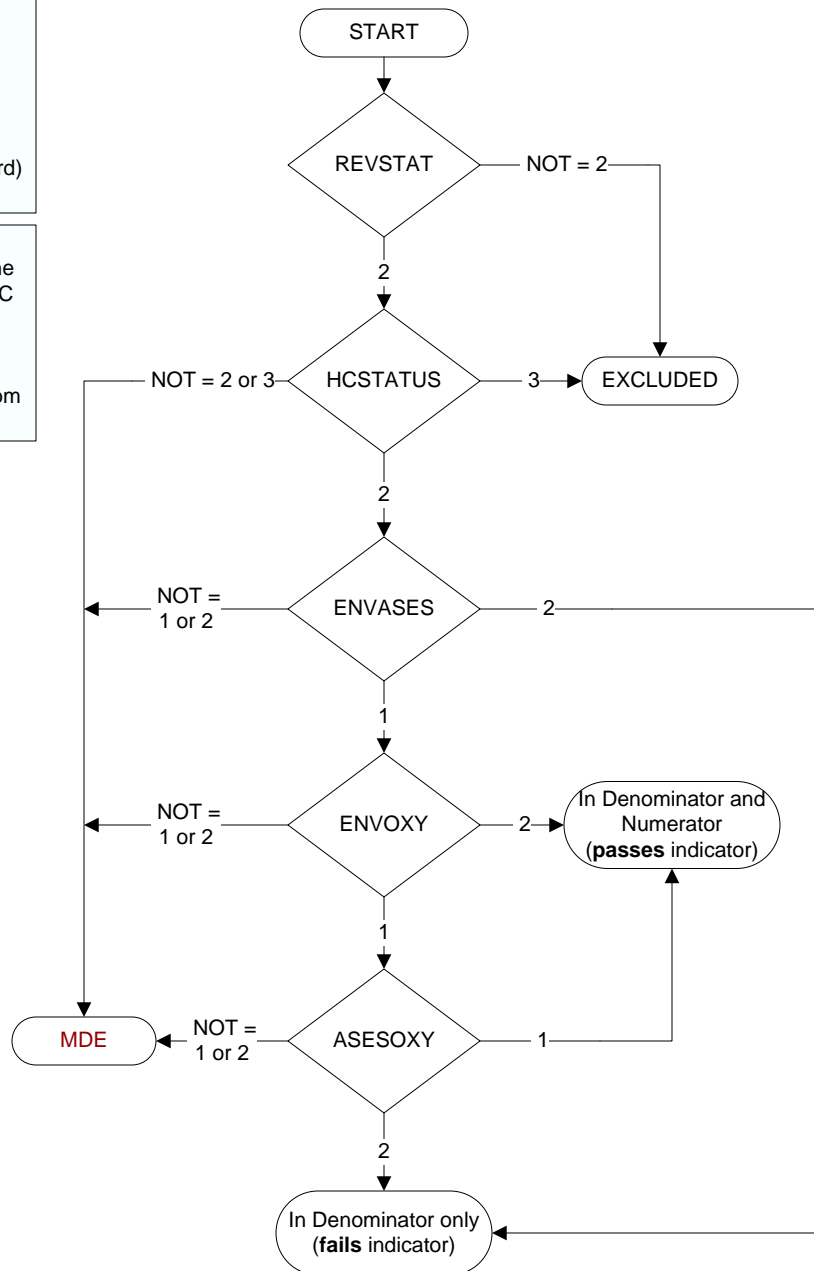
1. Yes
2. No

ASESOXY (HBPC)

During a face-to-face encounter within 30 days of HBPC admission date, was a home oxygen safety risk assessment documented by a HBPC team member to include all of the following components?

- Whether there are smoking materials in the home,
- Whether or not the home has functioning smoke detectors, and
- Whether there are other fire safety risks in the home, such as the potential for open flames

1. Yes
2. No



**MDE = Missing or
Invalid Data Exclusion
(data error)**