

REVSTAT

REVIEW STATUS (not abstracted)

- 0. Abstraction has not begun
- 1. Abstraction in progress
- 2. Abstraction completed w/o errors
- 3. TVG failure (exclusion)
- 4. Record contains missing required answers (error record)
- 5. Administrative exclusion from all measures

CATNUM

Sample category

53. Surgical Care

55. Type 10 Surgery Cases

SIADMDT (SCIP)

Date of admission to inpatient care:

BIRTHDT

Patient date of birth. Received on pull list.

DTOFDC (SCIP)

Discharge Date

AGE

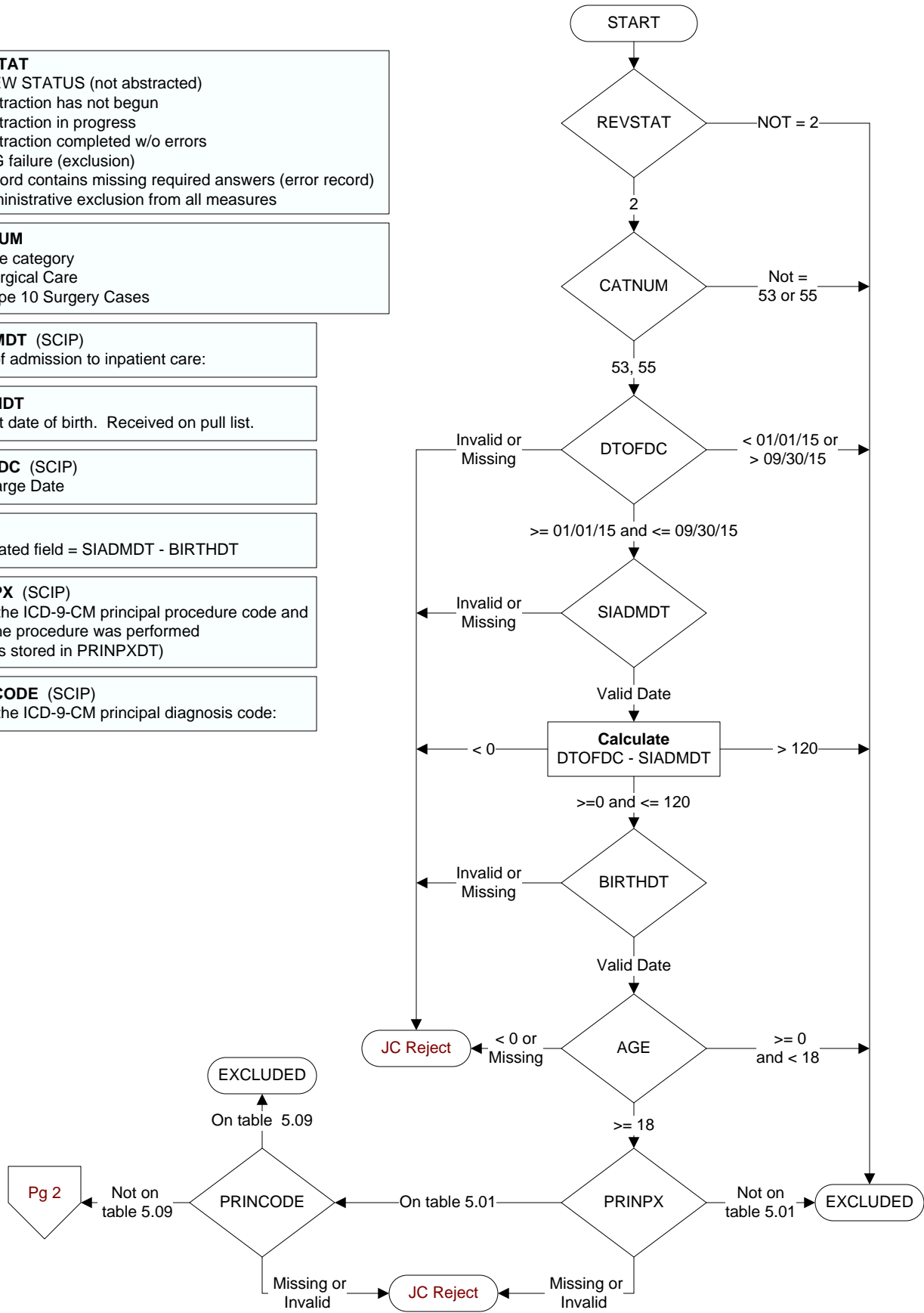
Calculated field = SIADMDT - BIRTHDT

PRINPX (SCIP)

Enter the ICD-9-CM principal procedure code and date the procedure was performed (date is stored in PRINPXDT)

PRINCODE (SCIP)

Enter the ICD-9-CM principal diagnosis code:



CLNTRIAL (SCIP)

During this hospital stay, was the patient enrolled in a clinical trial in which patients undergoing surgery were being studied?

1. Yes
2. No

ANEBEGDT (SCIP)

Enter the date the anesthesia was started for the principal procedure.

INFECDOC (SCIP)

Did the patient have an infection during this hospitalization prior to the principal procedure?

(Requires Physician, APN, or PA documentation)

- 1 = Yes
- 2 = No

PERIEXPR (SCIP)

Is there documentation that the patient expired during the timeframe from surgical incision through discharge from the post anesthesia care/ recovery area?

1. Yes
2. No
95. Not applicable

Were there any other procedures requiring general or spinal/epidural anesthesia that occurred within 3 days (4 days for CABG or Other Cardiac Surgery) prior to or after the principal procedure during this hospital stay?

Indicate all that apply: (SCIP)

OTHRSURG1. CABG

OTHRSURG2. Other Cardiac surgery (not CABG)

OTHRSURG3. Hip arthroplasty

OTHRSURG4. Knee arthroplasty

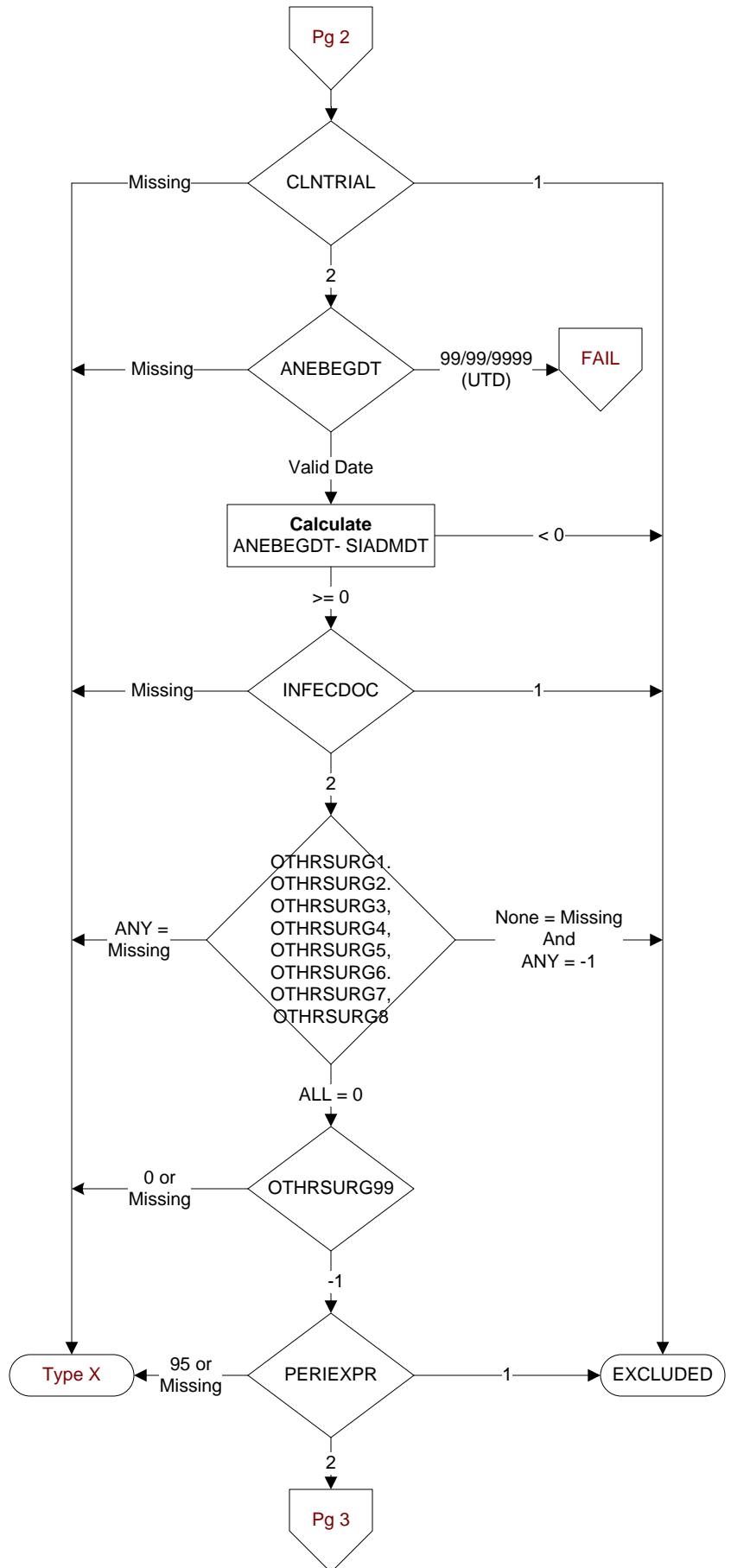
OTHRSURG5. Colon surgery

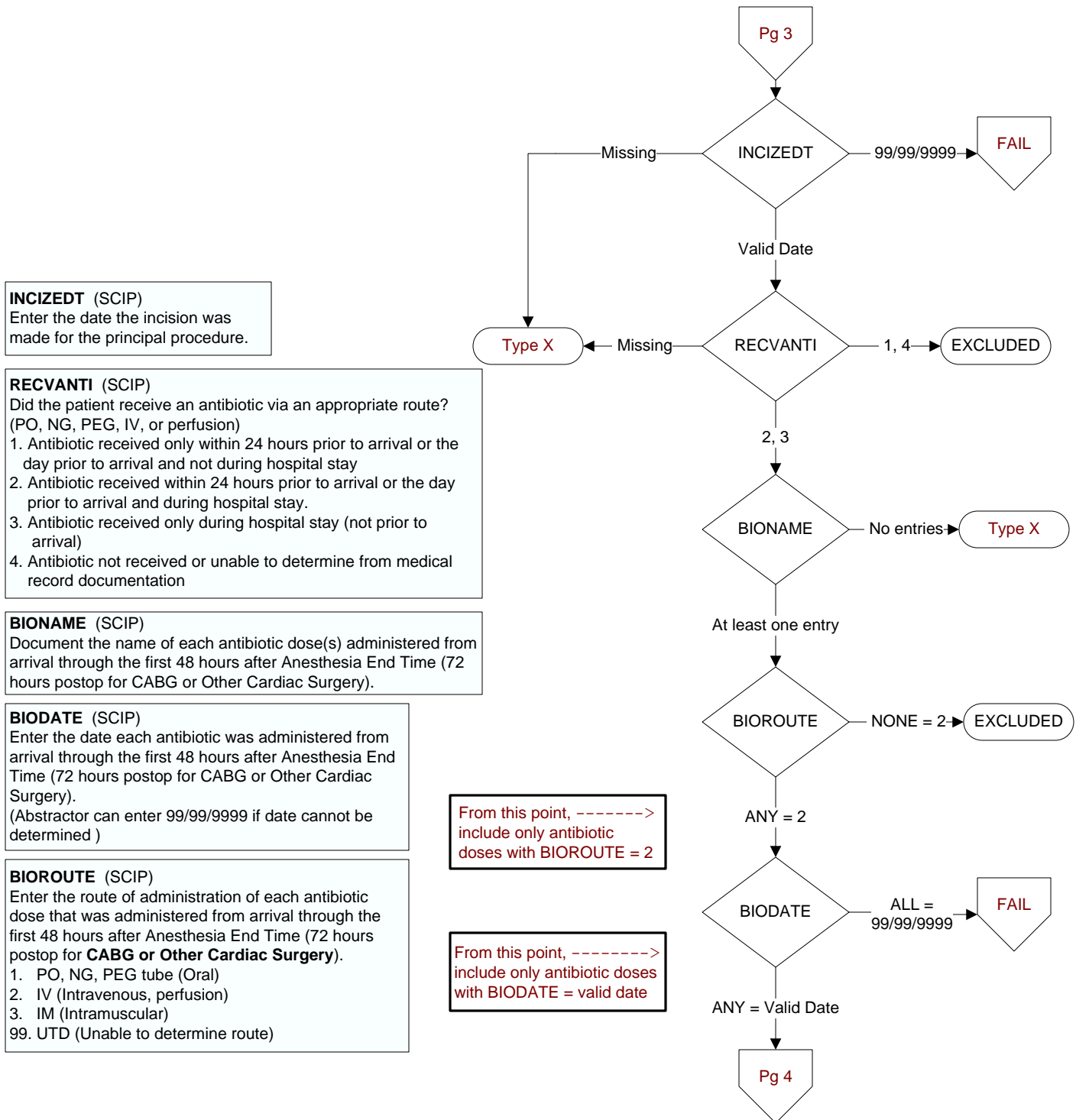
OTHRSURG6. Hysterectomy

OTHRSURG7. Vascular surgery

OTHRSURG8. Other

OTHRSURG99. No other procedure performed within this timeframe





INCIZETM (SCIP)
Enter the time the initial incision was made for the principal procedure.
(Abstractor may enter 99:99 if UTD)

BIOTIME (SCIP)
Enter the time each antibiotic dose was administered from arrival through the first 48 hours after Anesthesia End Time (72 hours postop for CABG or Other Cardiac Surgery)

ANESENDT (SCIP)
Enter the date the anesthesia ended for the principal procedure

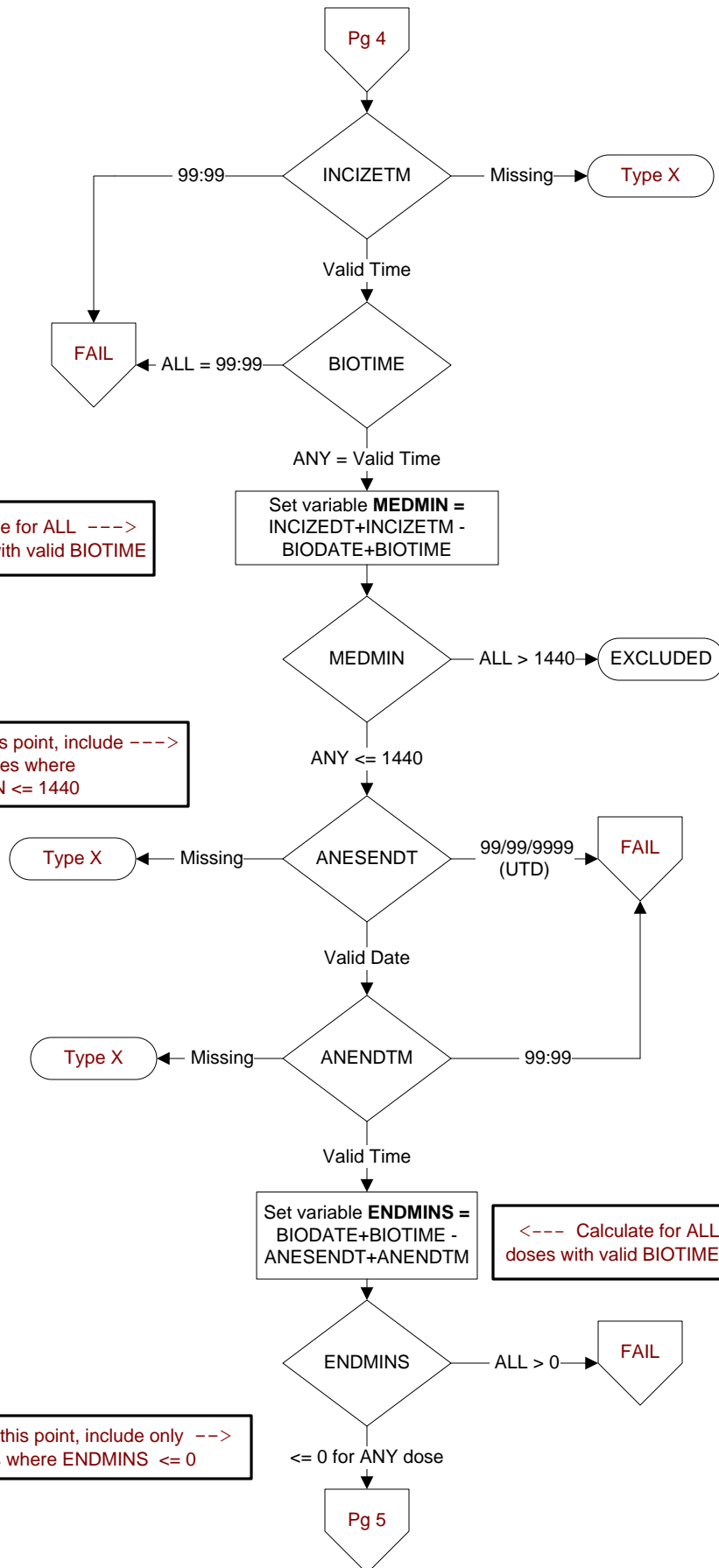
ANENDTM (SCIP)
Enter the time the anesthesia ended for the principal procedure.

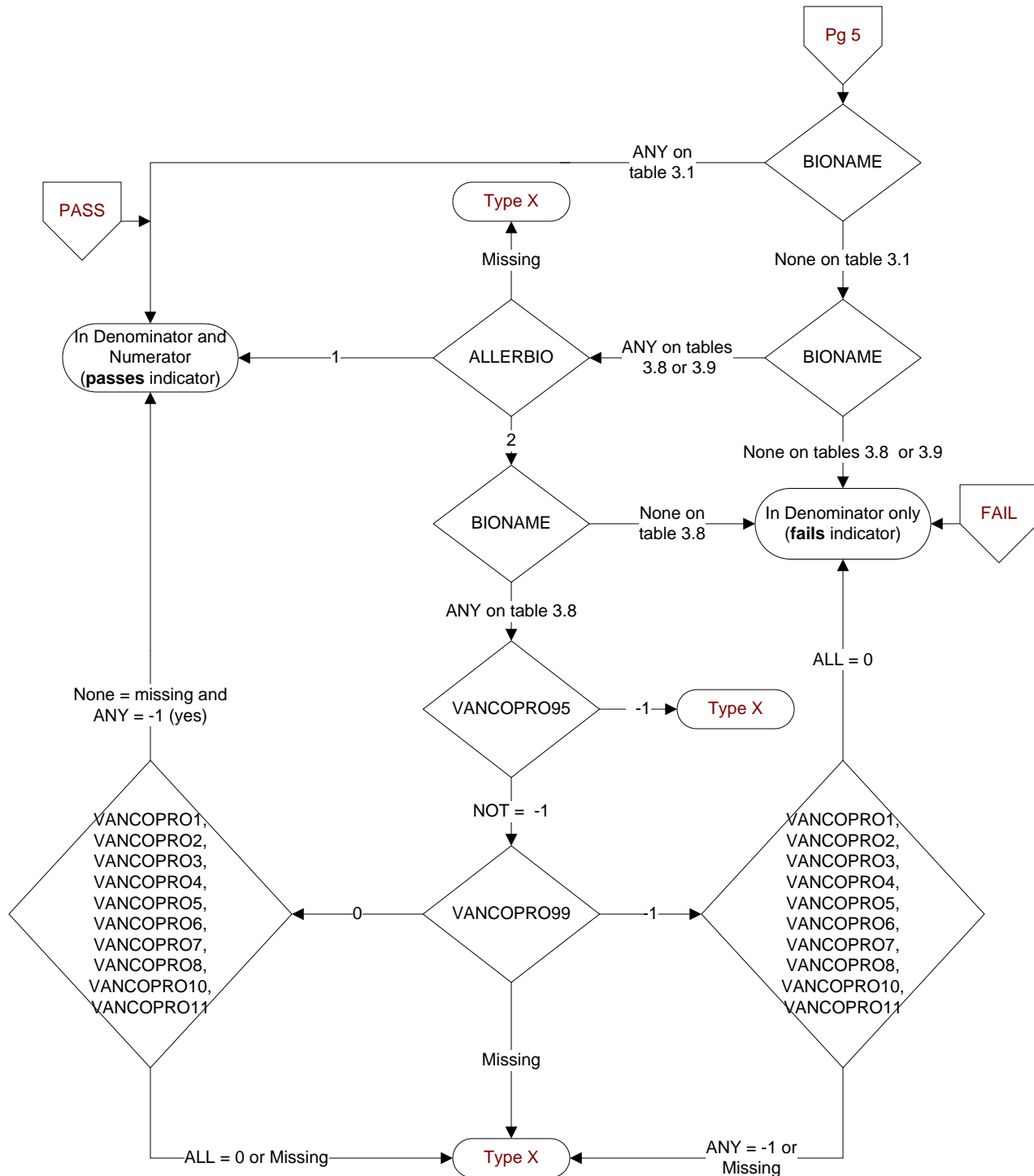
Calculate for ALL ---->
doses with valid BIOTIME

From this point, include ---->
only doses where
MEDMIN <= 1440

<--- Calculate for ALL
doses with valid BIOTIME

From this point, include only -->
doses where ENDMINS <= 0





What reason for using vancomycin was documented? (SCIP)

Select all that apply:

- VANCOPRO1.** Documentation of beta lactam (penicillin or cephalosporin) allergy
- VANCOPRO2.** Documentation of colonization with MRSA, positive MRSA screen, an MRSA infection, or a history of MRSA
- VANCOPRO3.** Documentation of patient being high-risk due to acute inpatient hospitalization within the last year
- VANCOPRO4.** Documentation of patient being high-risk due to nursing home or extended care facility setting within the last year, prior admission
- VANCOPRO5.** Physician/APN/PA or pharmacist documentation of increased MRSA rate, either facility-wide or procedure-specific
- VANCOPRO6.** Physician/APN/PA or pharmacist documentation of chronic wound care or dialysis
- VANCOPRO7.** Documentation of continuous inpatient stay more than 24 hours prior to the principal procedure
- VANCOPRO8.** Other physician/APN/PA or pharmacist documented reason
- VANCOPRO10.** Physician/APN/PA or pharmacist documentation of patient undergoing valve surgery
- VANCOPRO11.** Documentation of patient being transferred from another inpatient hospitalization after a 3-day stay
- VANCOPRO95.** Not applicable
- VANCOPRO99.** No documented reason