

REVSTAT

REVIEW STATUS (not abstracted)

- 0. Abstraction has not begun
- 1. Abstraction in progress
- 2. Abstraction completed w/o errors
- 3. TVG failure (exclusion)
- 4. Record contains missing required answers (error record)
- 5. Administrative exclusion from all measures

APROCODE (Validation)

Enter the ICD-9-CM principal diagnosis code

DCDATE (Validation)

Enter the date of discharge. (received on pull list and may not be modified)

ADMDT (Validation)

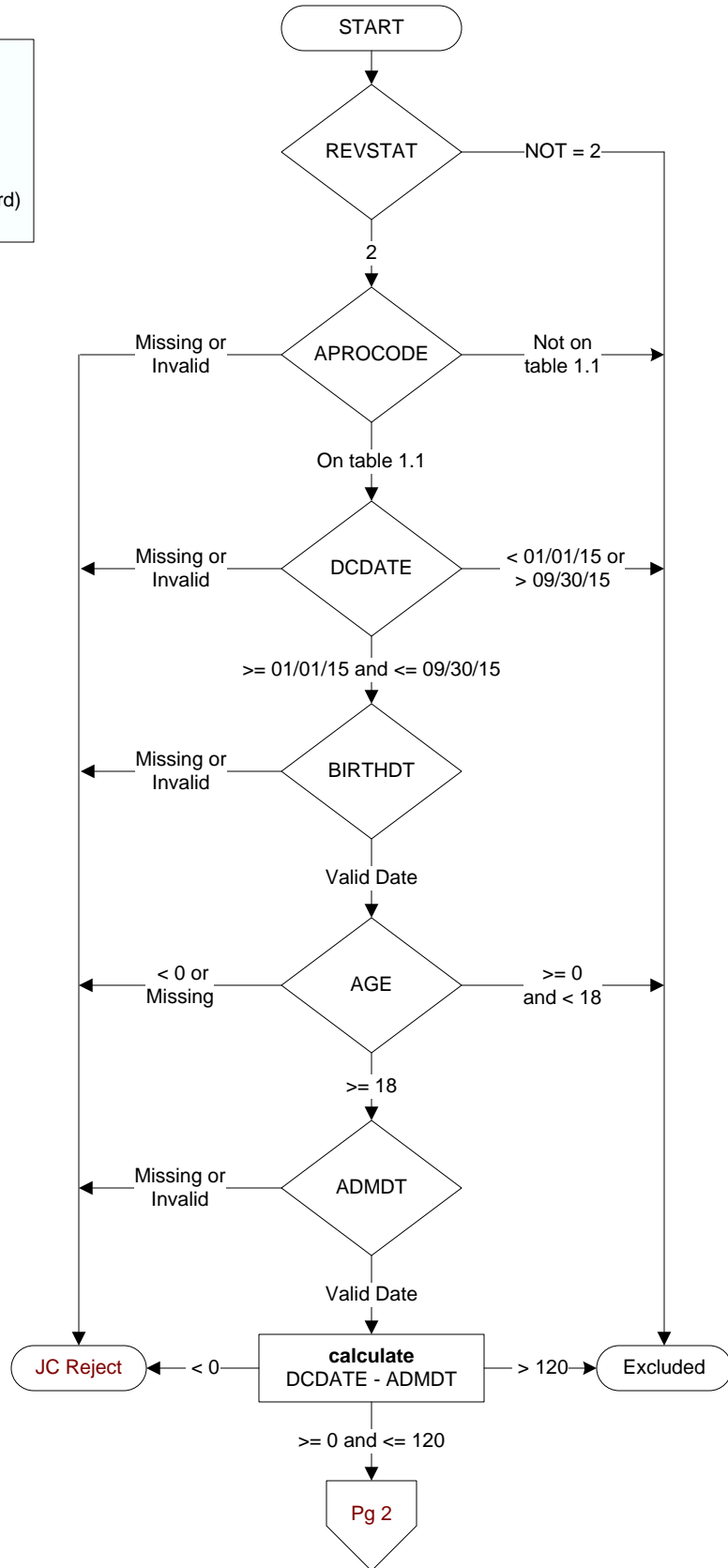
Enter the date the patient was formally admitted to inpatient status at this VAMC.

BIRTHDT (rcvd on pull list)

Patients date of birth.

AGE

calculated field: ADMDT - BIRTHDT

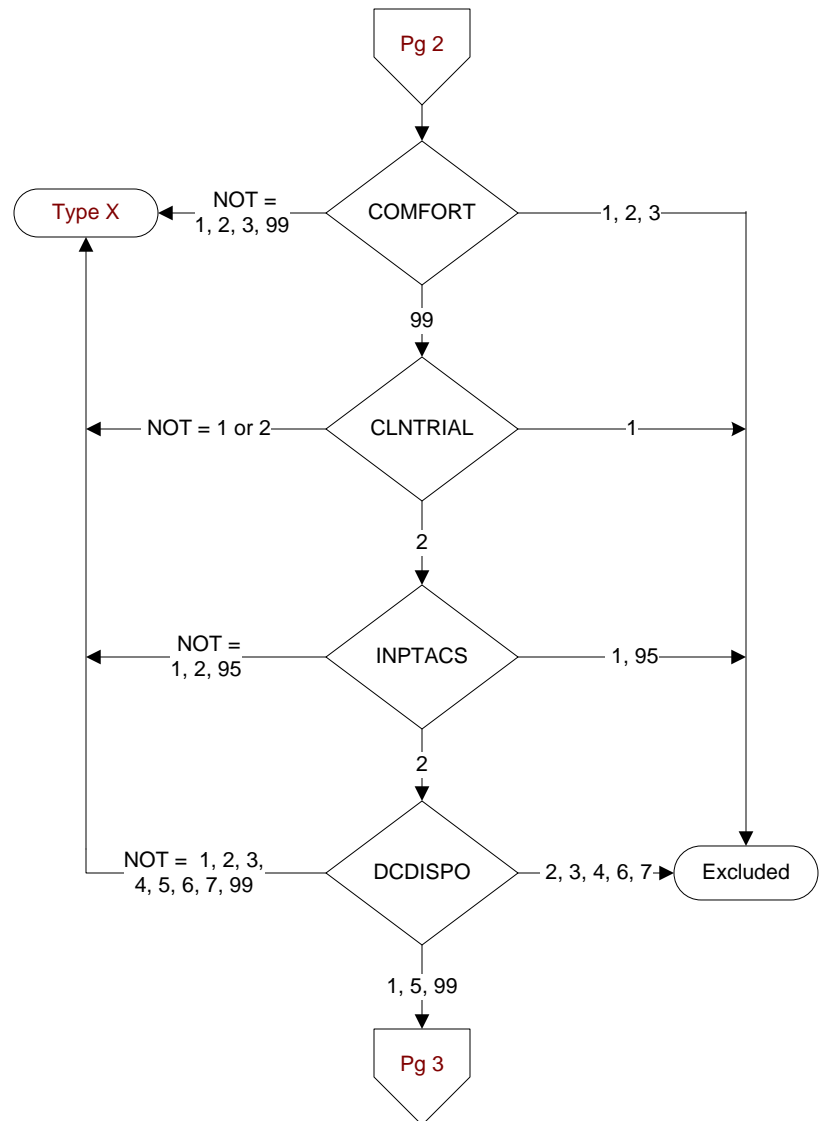


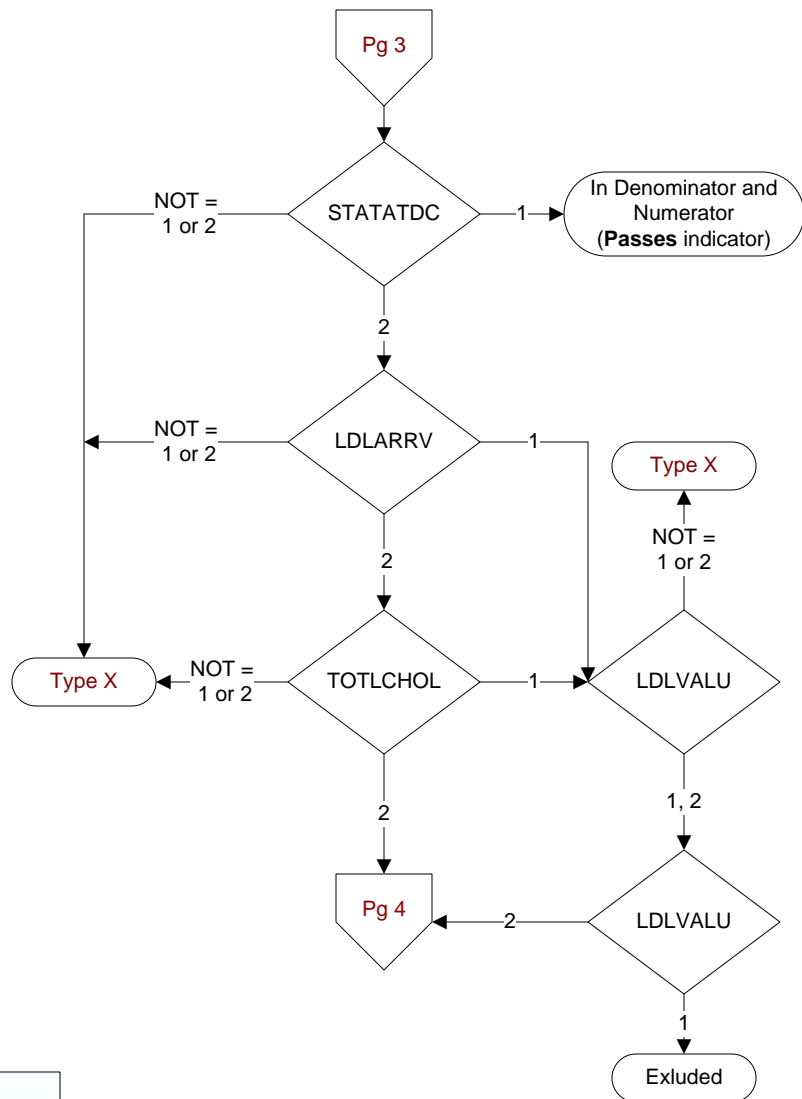
COMFORT (Validation)
When is the earliest physician, APN, or PA documentation of comfort measures only?
1. Day of arrival (day 0) or day after arrival (day 1)
2. Two or more days after arrival (day 2 or greater)
3. Comfort measures only documented during hospital stay, but timing unclear
99. Comfort measures only was not documented by the physician/APN/PA or unable to determine

CLNTRIAL (Validation)
During this hospital stay, was the patient enrolled in a clinical trial in which patients with acute myocardial infarction (AMI) were being studied? (Includes AMI, STEMI, NSTEMI, or heart attack)
1 = Yes
2 = No

INPTACS (Validation)
Was the veteran already a VAMC inpatient when ACS occurred?
1. yes
2. no
95. not applicable

DCDISPO (Validation)
What was the patient's discharge disposition on the day of discharge?
1. Home
-- Assisted Living Facilities (ALFs) - includes assisted living care at nursing home facility
-- Court/Law Enforcement - includes detention facilities, jails, and prison
-- Home - includes board and care, domiciliary, foster or residential care, group or personal care homes, retirement communities, and homeless shelters
-- Home with Home Health Services
-- Outpatient Services including outpatient procedures at another hospital, outpatient Chemical Dependency Programs and Partial Hospitalization
2. Hospice - Home (or other home setting as listed in #1 above)
3. Hospice - Health Care Facility
-- General Inpatient and Respite, Residential and Skilled Facilities, and Other Health Care Facilities
4. Acute Care Facility
-- Acute Short Term General and Critical Access Hospitals
-- Cancer and Children's Hospitals
-- Department of Defense and Veteran's Administration Hospitals
5. Other Health Care Facility
-- Extended or Immediate Care Facility (ECF/ICF)
-- Long Term Acute Care Hospital (LTACH)
-- Nursing Home or Facility including Veteran's Administration Nursing Facility
-- Psychiatric Hospital or Psychiatric Unit of a Hospital
-- Rehabilitation Facility including Inpatient Rehabilitation Facility/Hospital or Rehabilitation Unit of a Hospital
-- Skilled Nursing Facility (SNF), Sub-Acute Care or Swing Bed
-- Transitional Care Unit (TCU)
-- Veteran's Home
6. Expired
7. Left Against Medical Advice/AMA
99. Not documented or unable to determine





STATDC (Discharge)

Was a statin medication prescribed at discharge?

Examples include, but are not limited to:

- atorvastatin calcium (Lipitor)
- fluvastatin sodium (Lescol)
- lovastatin (Mevacor) (Altacor)
- pitavastatin (Livalo)
- pravastatin sodium (Pravacol)
- rosuvastatin calcium (Crestor)
- simvastatin (Zocor)
- ezetimibe/simvastatin (Vytorin)

1. Yes
2. No

LDLARRV (Hx & Assmt)

Was an LDL-cholesterol (LDL-c) test in mg/dL (or mg/100ml) performed within the first 24 hours after hospital arrival?

1. Yes
2. No

TOTLCHOL (Hx & Assmt)

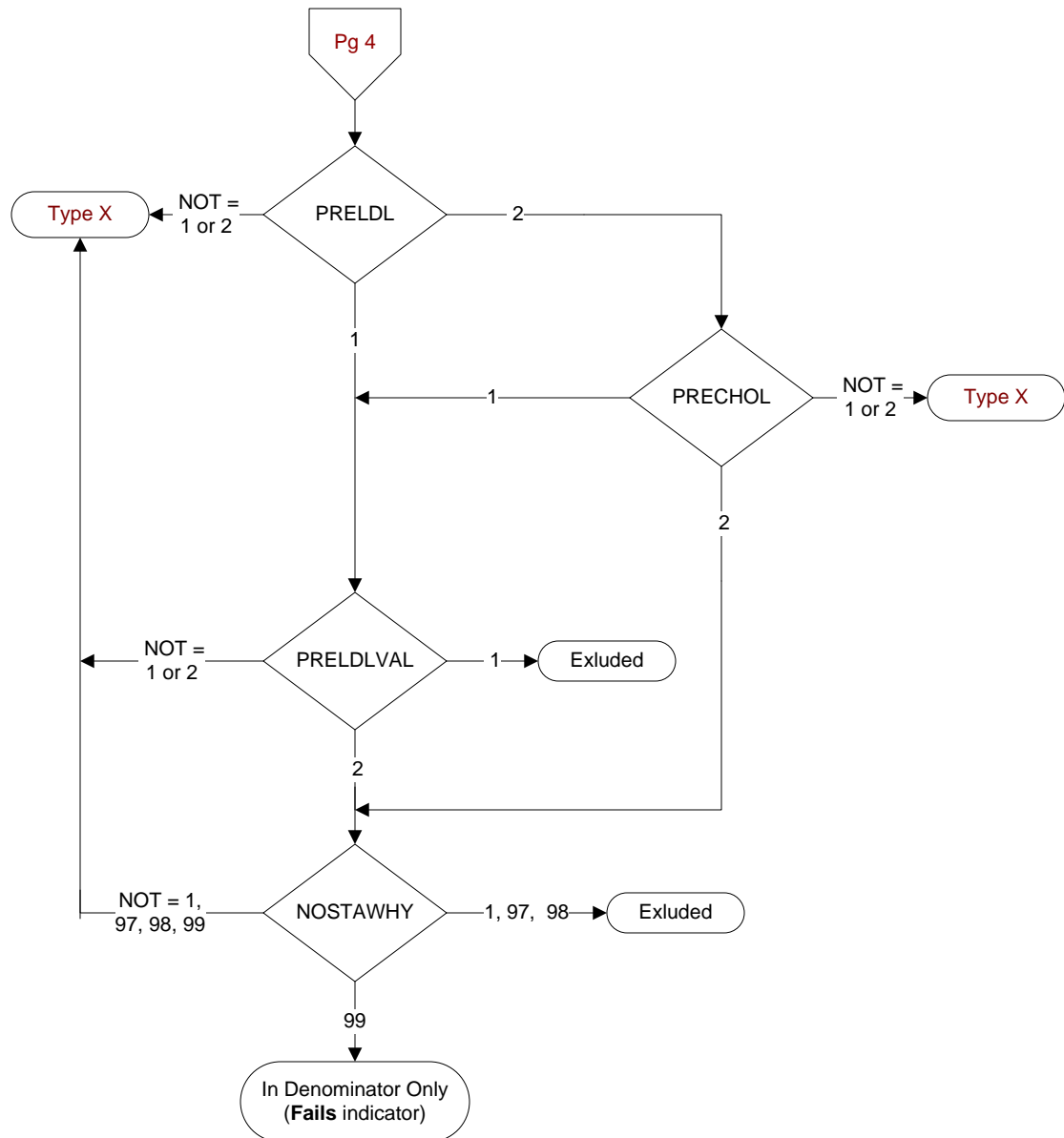
Was a total cholesterol (TC or cholesterol) test in mg/dL (or mg/100ml) performed within the first 24 hours after hospital arrival?

1. Yes
2. No
95. Not applicable

LDLVALU (Hx & Assmt)

Were any of the patient's LDL-c cholesterol (or total cholesterol) levels less than 100 mg/dL from testing done within the first 24 hours after hospital arrival?

1. Yes
2. No
95. Not applicable



PRELDL (Hx & Assmt)
 Was a LDL-cholesterol (LDL-c) test in mg/dL (or mg/100ml) performed within 30 days prior to hospital arrival?
 1. Yes
 2. No
 95. Not applicable

PRECHOL (Hx & Assmt)
 Was a total cholesterol (TC or cholesterol) test in mg/dL (or mg/100ml) performed within the 30 days prior to hospital arrival?
 1. Yes
 2. No
 95. Not applicable

PRELDLVAL (Hx & Assmt)
 Were any of the patient's LDL-c cholesterol (or total cholesterol) levels less than 100 mg/dL from testing done within 30 days prior to hospital arrival?
 1. Yes
 2. No

NOSTAWHY (Discharge)
 Is there documentation of a reason for not prescribing a statin medication at discharge?
 1. Statin medication allergy
 95. Not applicable
 97. Other reason documented by a physician/APN/PA or pharmacist for not prescribing a statin medication at discharge
 98. Patient refusal of ALL statin medications documented by physician/APN/PA or pharmacist
 99. No documented reason