

**REVSTAT**

REVIEW STATUS (not abstracted)

0. Abstraction has not begun
1. Abstraction in progress
2. Abstraction completed w/o errors
3. TVG failure (exclusion)
4. Record contains missing required answers (error record)
5. Administrative Exclusion

**HCSTATUS** (HBPC)

Counting from the most recent HBPC encounter within the study interval, enter the patient's status in regard to HBPC admission:

2. HBPC admission greater than or equal to 30 days but less than or equal to 1 year
3. HBPC admission greater than one year (>365 days from the admission date)

**STDYBEG**

Study Begin date - received on pull list

**ADMISDT** (HBPC)Enter the HBPC admission date. **Admission date is date of the progress note documenting admission.****MEDONE** (HBPC)

During the timeframe from (computer to display stdybeg 110 days to stdybeg 90 days), was the patient on at least one medication?

1. Yes
2. No

**MEDREV3** (HBPC)

Did the record document the patient's HBPC medication management plan in a note signed by the pharmacist?

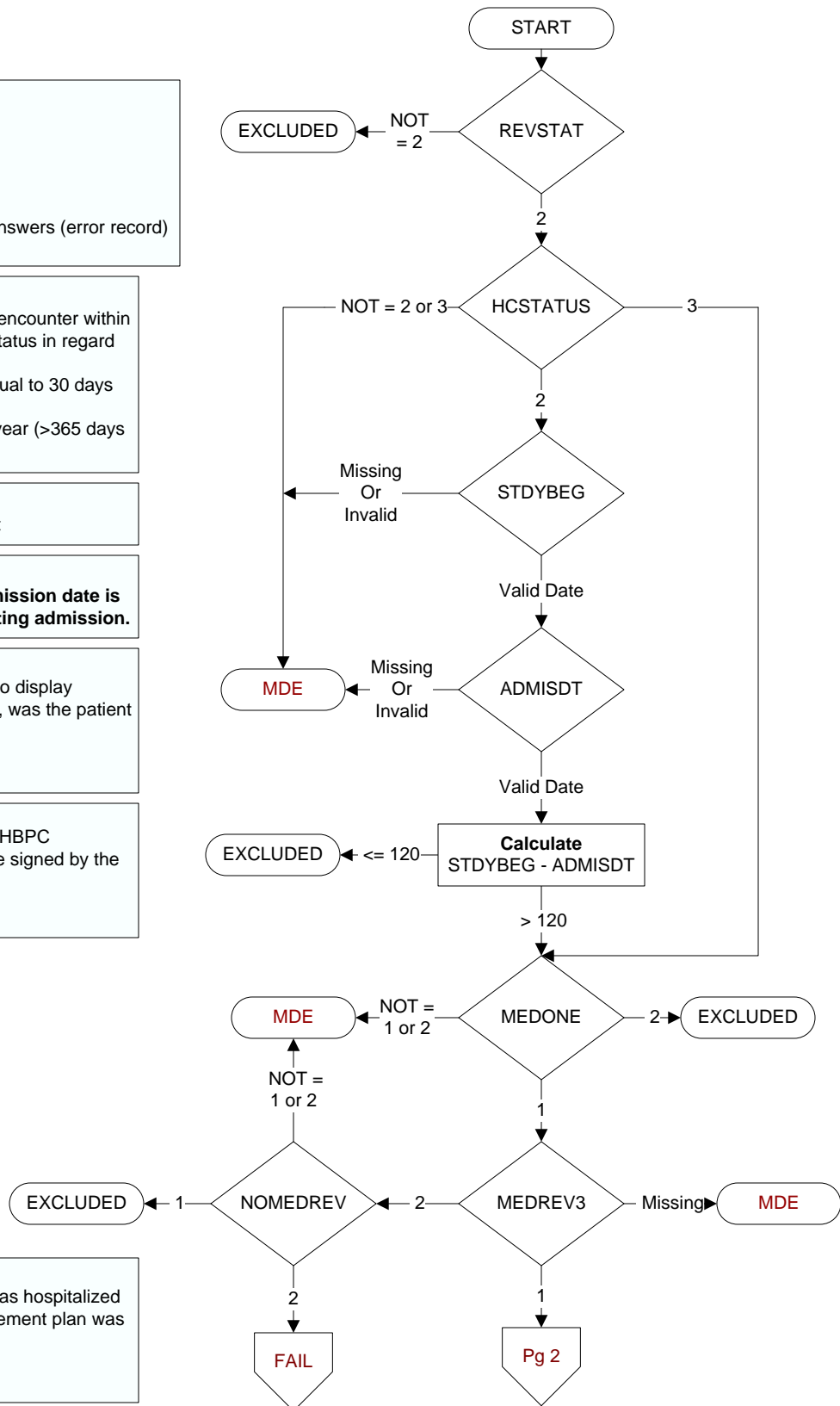
1. Yes
2. No

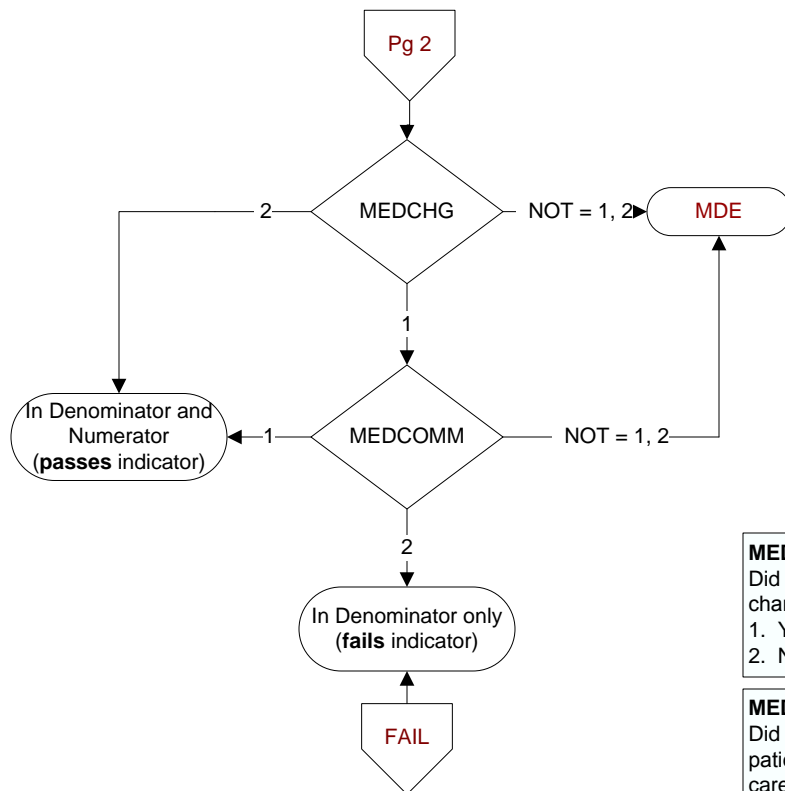
**MDE = Missing or Invalid Data Exclusion (data error)**

**NOMEDREV** (HBPC)

Did the record document the patient was hospitalized during the time the medication management plan was to be reviewed?

1. Yes
2. No



**MEDCHG (HBPC)**

Did the pharmacist make any recommendation for change in the patient's medication regimen?

1. Yes
2. No

**MEDCOMM (HBPC)**

Did the pharmacist communicate any change in the patient's medication regimen to the HBPC or primary care provider?

1. Yes
2. No