

CATNUM

Sample category

10. Inpt AMI primary dx	42. Inpt AMI primary/prin dx
29. Inpt Heart Failure	53. Inpt Surgery
41. Inpt Pneumonia	55. Inpt Surgery - type 10

REVSTAT

REVIEW STATUS (not abstracted)

0. Abstraction has not begun
 1. Abstraction in progress
 2. Abstraction completed w/o errors
 3. TVG failure (exclusion)
 4. Record contains missing required answers (error record)
 5. Administrative Exclusion

AGE (calculated field)

Hospital Admission Date - Patient DOB (BIRTHDT)

HXCOGIMP (Delirium)During the first 24 hours after arrival, does the record document a history of cognitive impairment?**Indicate all that apply:**

HXCOGIMP1. Dementia or demented
 HXCOGIMP2. Memory loss
 HXCOGIMP3. Alzheimer's Disease
 HXCOGIMP4. Poor historian
 HXCOGIMP6. Unarousable
 HXCOGIMP7. Uncooperative
 HXCOGIMP8. Change in mental status (from baseline)
 HXCOGIMP10. Confused
 HXCOGIMP11. Lethargic or obtunded
 HXCOGIMP99. None of the above

DEMEDRX (Delirium)

Upon admission, were any of the following medications listed as home (current) medications for the patient?

Indicate all that apply:

DEMEDRX1. donepezil (Aricept)
 DEMEDRX2. galantamine (Razadyne)
 DEMEDRX3. memantine (Namenda)
 DEMEDRX4. rivastigmine (Exelon)
 DEMEDRX99. None of the above

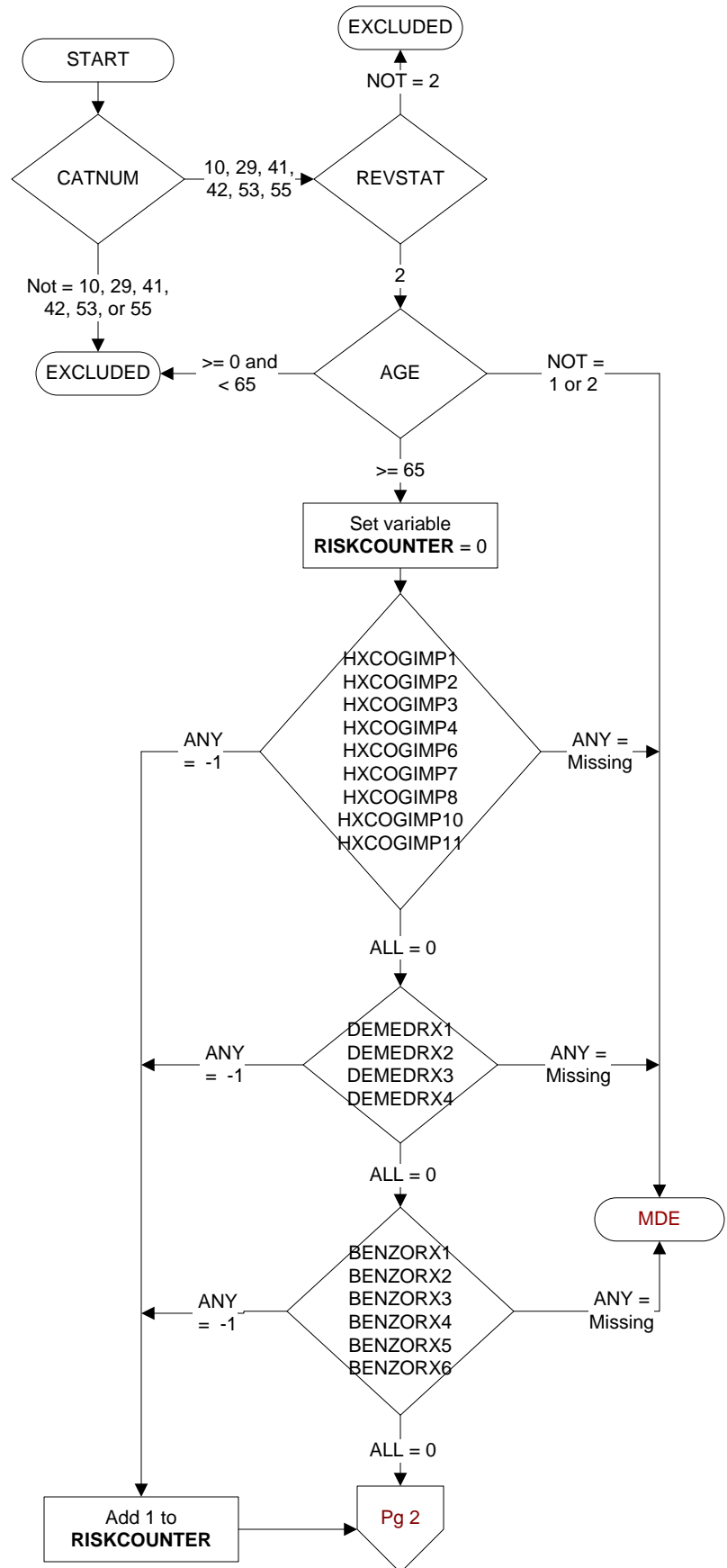
BENZORX (Delirium)

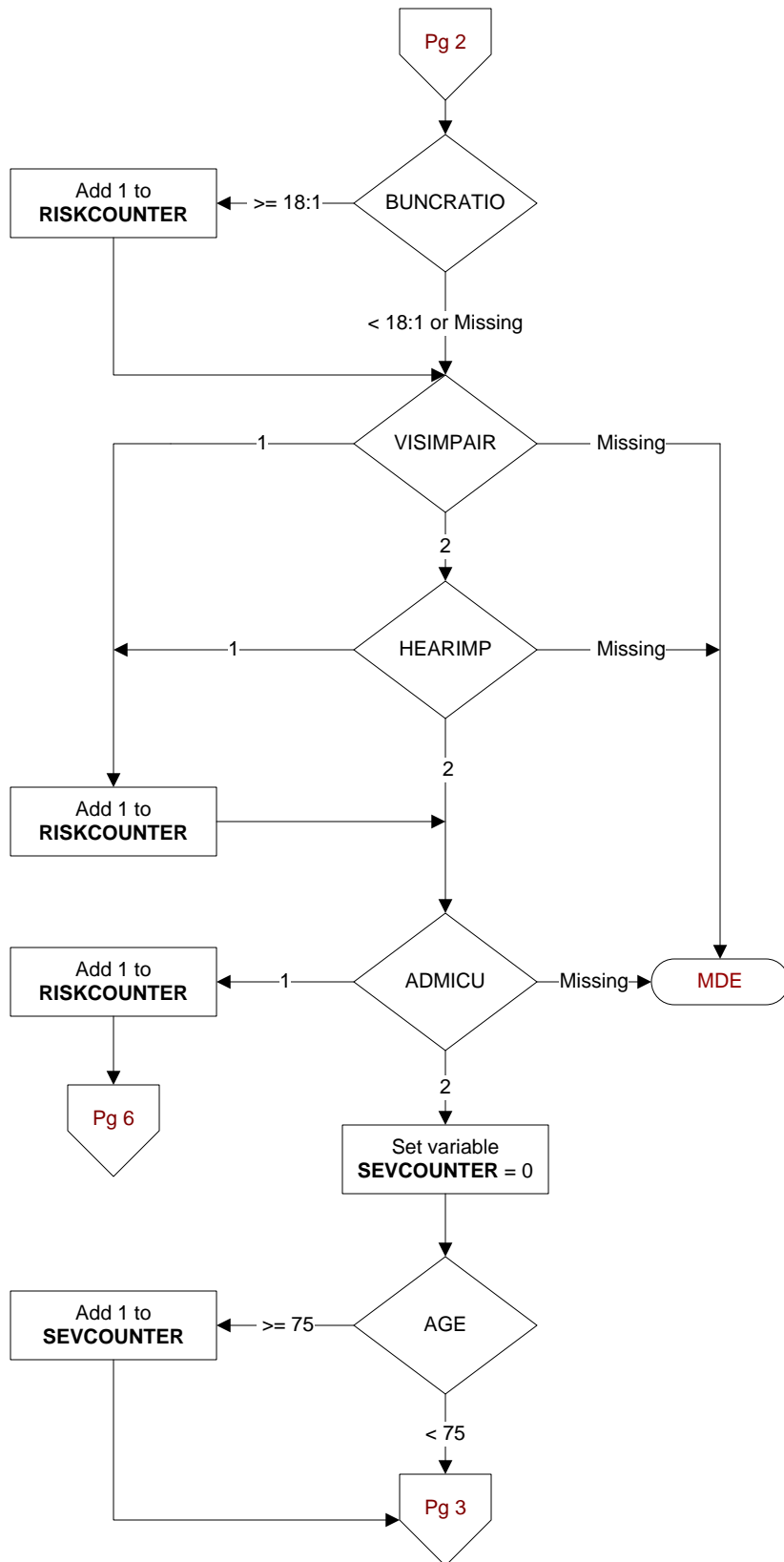
Upon admission, were any of the following medications listed as home (current) medications for the patient?

Indicate all that apply:

BENZORX1. alprazolam (Xanax)
 BENZORX2. chlordiazepoxide (Librium)
 BENZORX3. clonazepam (Klonopin)
 BENZORX4. diazepam (Valium)
 BENZORX5. lorazepam (Ativan)
 BENZORX6. temazepam (Restoril)
 BENZORX99. None of the above

**MDE = Missing or
 Invalid Data Exclusion
 (data error)**




VISIMPAIR (Delirium)

During the first 24 hours after arrival, does the record document a history of vision impairment as evidenced by documentation of one of the following?

- Visual Loss
- Vision abnormal
- Low vision
- Cataract
- Vision impairment
- Decreased vision
- Blindness
- Blurred vision
- Wears glasses

1. Yes
2. No

HEARIMP (Delirium)

During the first 24 hours after arrival, does the record document a history of hearing impairment as evidenced by documentation of one of the following?

- Hearing Loss (Partial, Bilateral, or severe)
- Sensorineural hearing loss
- Conductive hearing loss
- Problems with hearing
- Mixed hearing loss
- Central hearing loss
- Deafness
- Meiere's Disease
- Hard of hearing
- Wears hearing aids
- Presbycusis

1. Yes
2. No

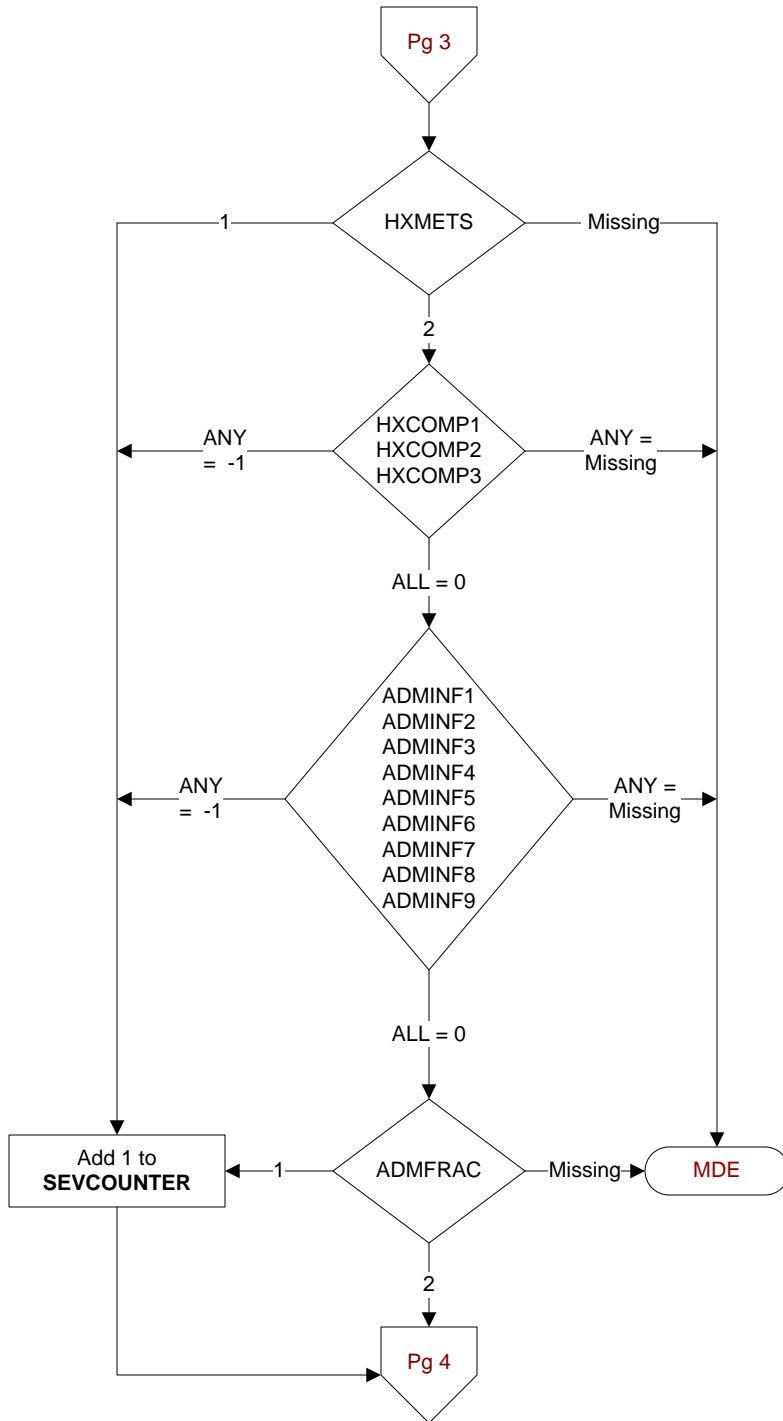
BUNCRATIO (Delirium)

Computer will calculate and display the BUN/CR ratio.

ADMICU (Delirium)

Was the patient admitted to an intensive care unit, coronary care unit, or intermediate care unit?

1. Yes
2. No



HXMETS (Delirium)

During the first 24 hours after arrival, does the record document a history of metastatic cancer?

1. Yes
2. No

HXCOMP (Delirium)

During the first 24 hours after arrival, does the record document a history of any of the following diagnoses?

Indicate all that apply:

- HXCOMP1. Lymphoma
- HXCOMP2. Leukemia
- HXCOMP3. AIDS
- HXCOMP99. None of the above

ADMINF (Delirium)

Was the patient admitted with an acute (new) infection?

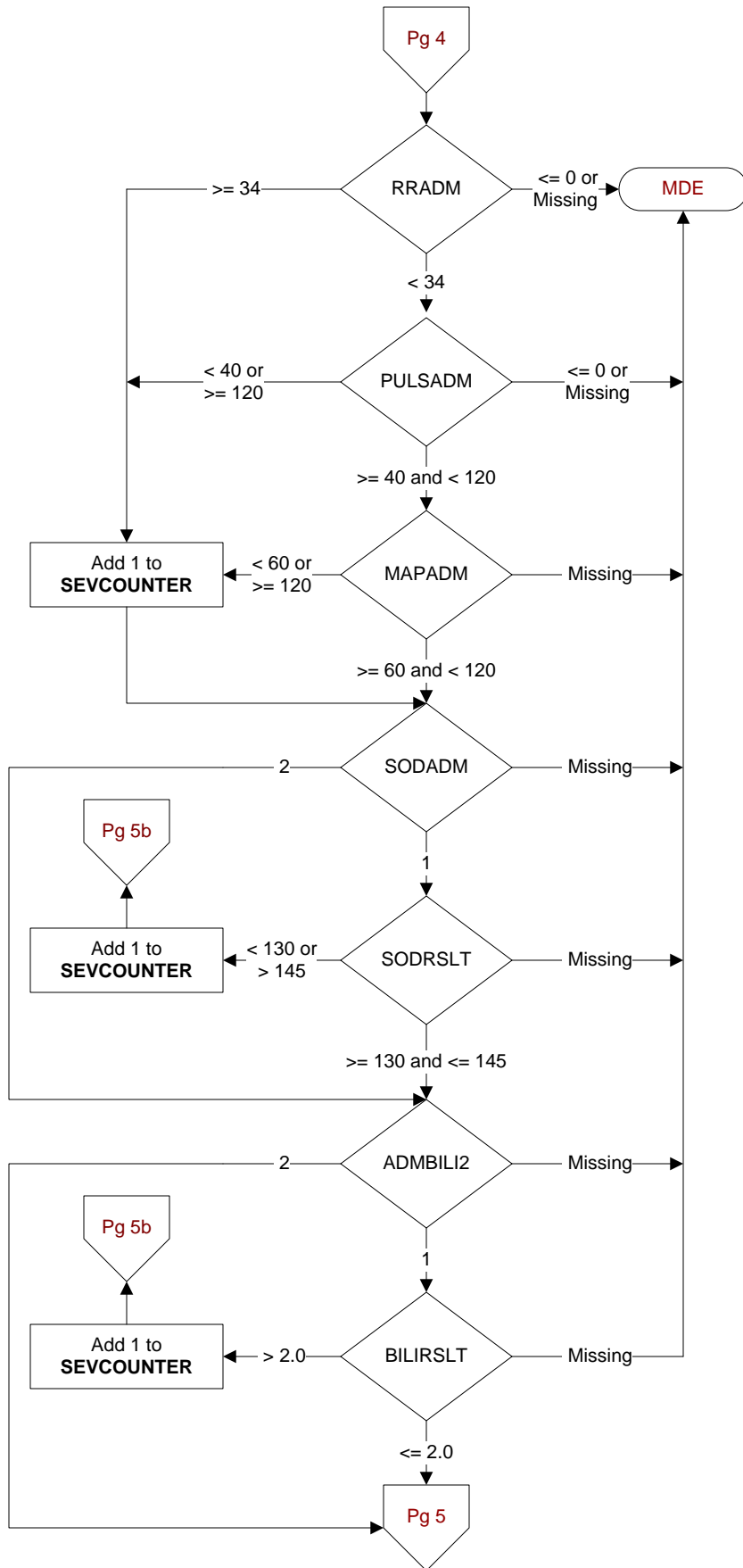
Indicate all that apply:

- ADMINF1. Pneumonia
- ADMINF2. Urinary tract infection (UTI)
- ADMINF3. Septicemia or sepsis
- ADMINF4. Cellulitis
- ADMINF5. Diverticulitis
- ADMINF6. Peritonitis
- ADMINF7. Appendicitis
- ADMINF8. Osteomyelitis
- ADMINF9. Meningitis
- ADMINF99. None of the above

ADMFRAC (Delirium)

Was the patient admitted with an acute (new) major bone fracture (hip, femur, leg, vertebra, spine, humerus, arm, and/or wrist)?

1. Yes
2. No



RRADM (Delirium)
Enter the first respiratory rate documented after admission.

PULSADM (Delirium)
Enter the first pulse rate documented after admission.

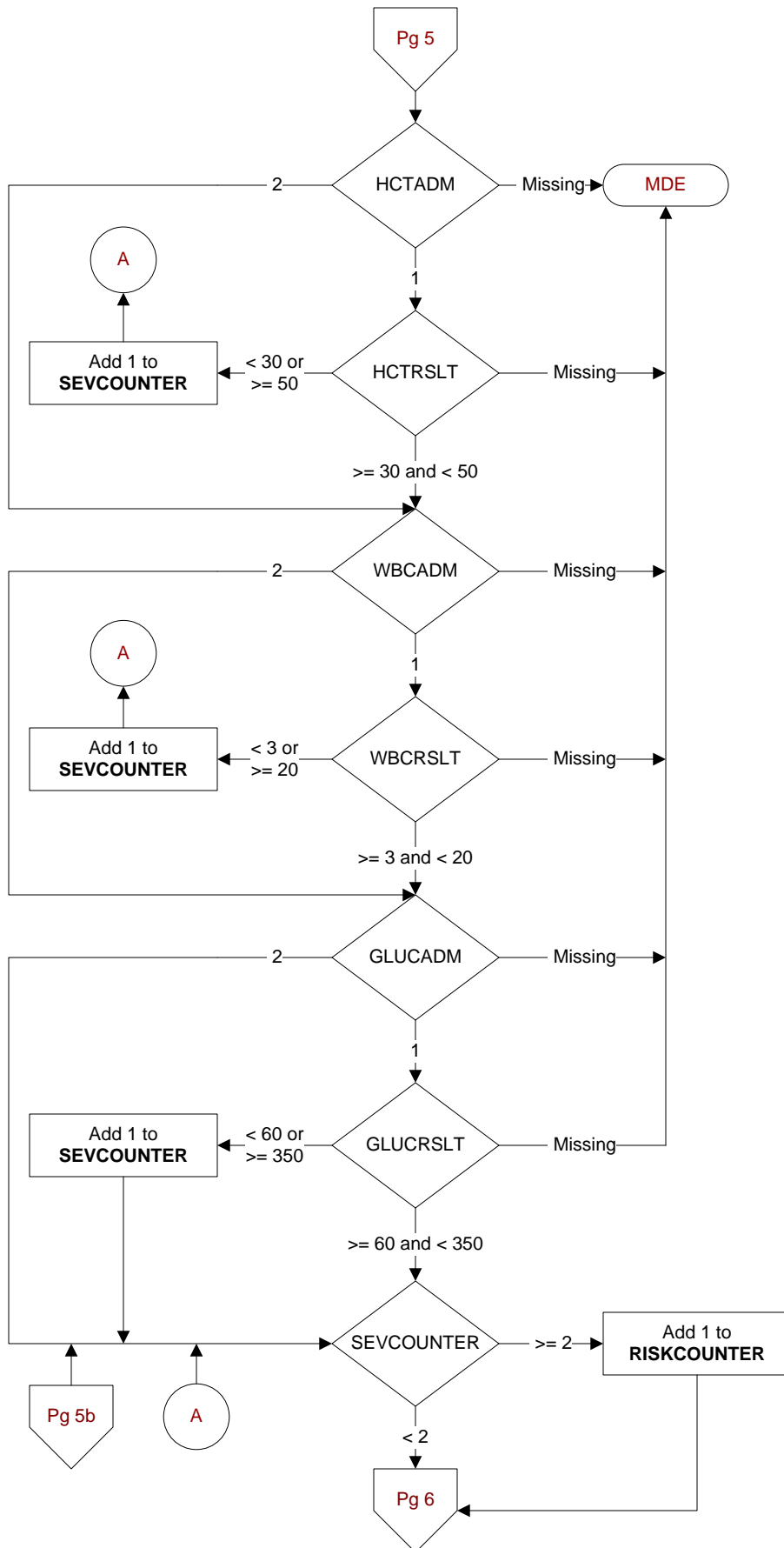
MAPADM (Delirium)
Computer to calculate mean arterial blood pressure.

SODADM (Delirium)
Was a sodium level obtained during this hospitalization?
1. Yes
2. No

SODRSLT (Delirium)
Enter the value of the first sodium obtained following hospital admission.

ADMBILI2 (Delirium)
Was a total serum bilirubin obtained during this hospitalization?
1. Yes
2. No

BILIRSLT (Delirium)
Enter the value of the first total serum bilirubin obtained after hospital admission.



HCTADM (Delirium)
Was a hematocrit obtained during this hospitalization?
1. Yes
2. No

HCTRSLT (Delirium)
Enter the value of the first hematocrit obtained following hospital admission..

WBCADM (Delirium)
Was a white blood cell count (WBC) obtained during this hospitalization?
1. Yes
2. No

WBCRSLT (Delirium)
Enter the value of the first white blood cell count obtained following hospital admission.

GLUCADM (Delirium)
Was a glucose level obtained during this hospitalization?
1. Yes
2. No

GLUCRSLT (Delirium)
Enter the value of the first glucose obtained following hospital admission.

