

**CATNUM**

Sample category  
16. AMI - Outpatient visit  
36. SCI Dx  
48. Female, age 20-69  
50. Random Sample  
51. Random Sample MH  
54. Frail/Elderly  
60. DM Outpatient  
61. Inpatient SC  
68. Contract CBOC

**FEFLAG** (rcvd on pull list)  
FE case flagged for CGPI review / scoring?  
0. No  
1. Yes

**OTHCARE** (Validation)

Is there evidence in the medical record that within the past two years, the patient refused VHA Primary Care and is receiving ONLY his/her primary care in a non-VHA setting?  
1. yes  
2. no

**REVSTAT**

REVIEW STATUS (not abstracted)  
0. Abstraction has not begun  
1. Abstraction in progress  
2. Abstraction completed w/o errors  
3. TVG failure (exclusion)  
4. Record contains missing required answers (error record)  
5. Administrative exclusion from all measures

**DOCHOSPCE** (PI module)

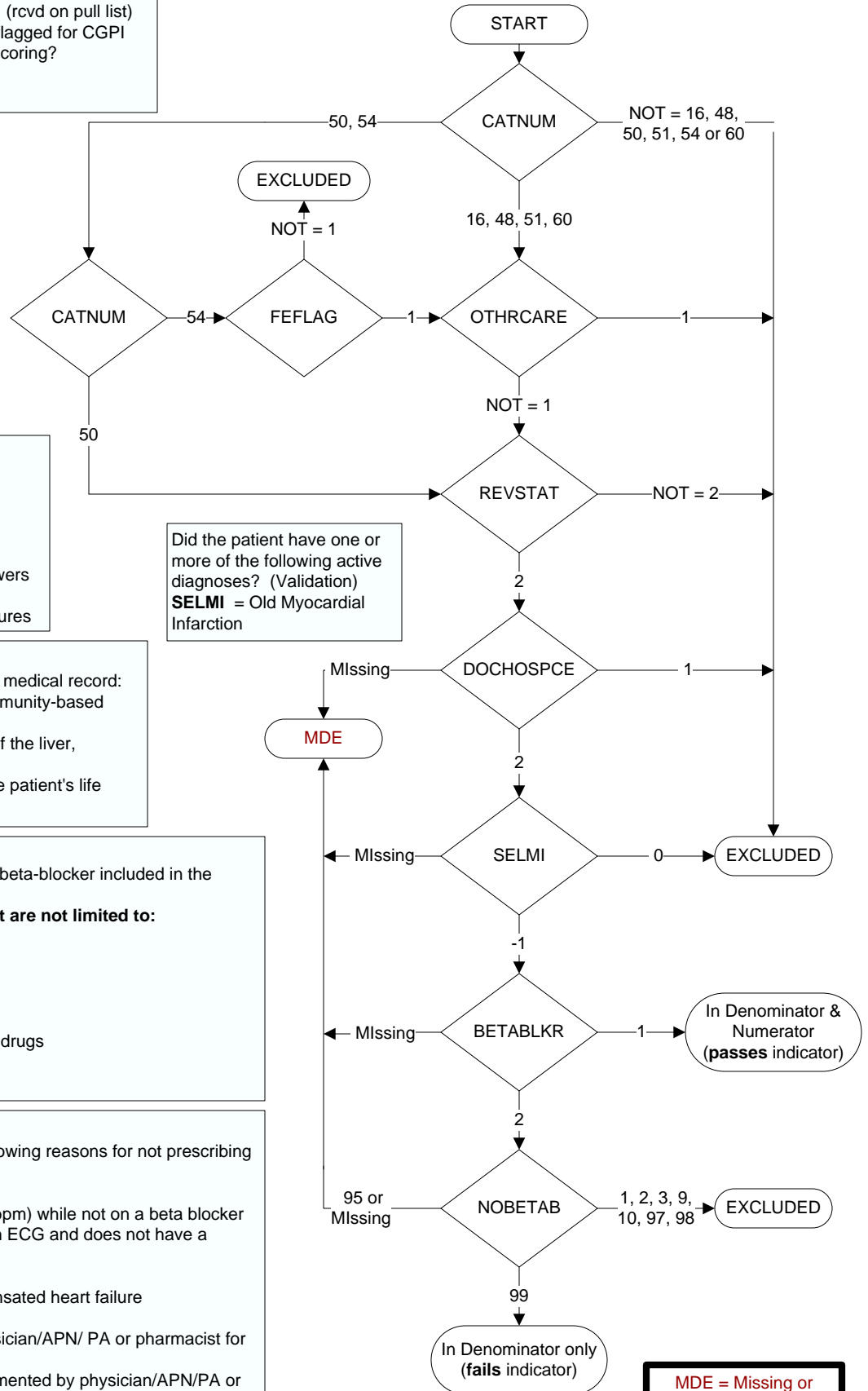
Is one of the following documented in the medical record:  
- the patient is enrolled in a VHA or community-based Hospice program  
- the patient has a diagnosis of cancer of the liver, pancreas, or esophagus  
- on the problem list it is documented the patient's life expectancy is less than 6 months?

**BETABLKR** (Shared)

At the most recent outpatient visit, was a beta-blocker included in the patient's current medications?  
**Examples of beta-blockers include, but are not limited to:**  
• metoprolol succinate or tartrate  
• carvedilol  
• atenolol  
• nadolol  
• propranolol  
• combination of beta-blockers with other drugs  
1. Yes  
2. No

**NOBETAB** (Shared)

Does the record document any of the following reasons for not prescribing a beta-blocker?  
1. Beta-blocker allergy  
2. Bradycardia (heart rate less than 60 bpm) while not on a beta blocker  
3. Second or third degree heart block on ECG and does not have a pacemaker  
9. Post-heart transplant patient  
10. Documentation of severely decompensated heart failure  
95. Not applicable  
97. Other reasons documented by a physician/APN/ PA or pharmacist for not prescribing a beta- blocker  
98. Patient refusal of beta-blockers documented by physician/APN/PA or pharmacist  
99. No documented reason



**MDE = Missing or Invalid Data Exclusion (data error)**