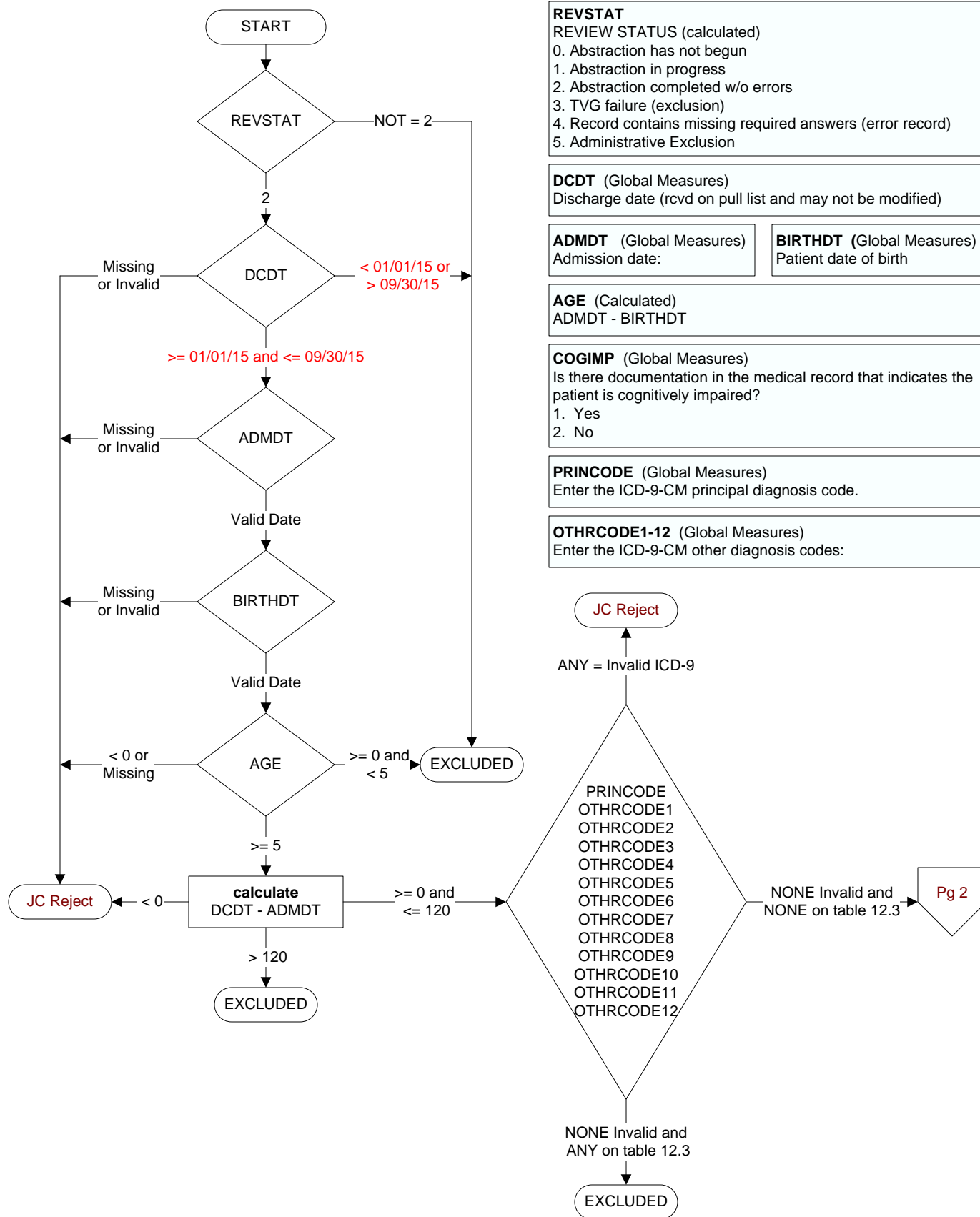


# Global 2q15 - IMM3 - Pneumococcal Immunization (PPV23) High Risk Populations (Age 5 through 64 years) (IMM-1c)



**REVSTAT**  
REVIEW STATUS (calculated)  
0. Abstraction has not begun  
1. Abstraction in progress  
2. Abstraction completed w/o errors  
3. TVG failure (exclusion)  
4. Record contains missing required answers (error record)  
5. Administrative Exclusion

**DCDT** (Global Measures)  
Discharge date (rcvd on pull list and may not be modified)

**ADMDT** (Global Measures)  
Admission date:

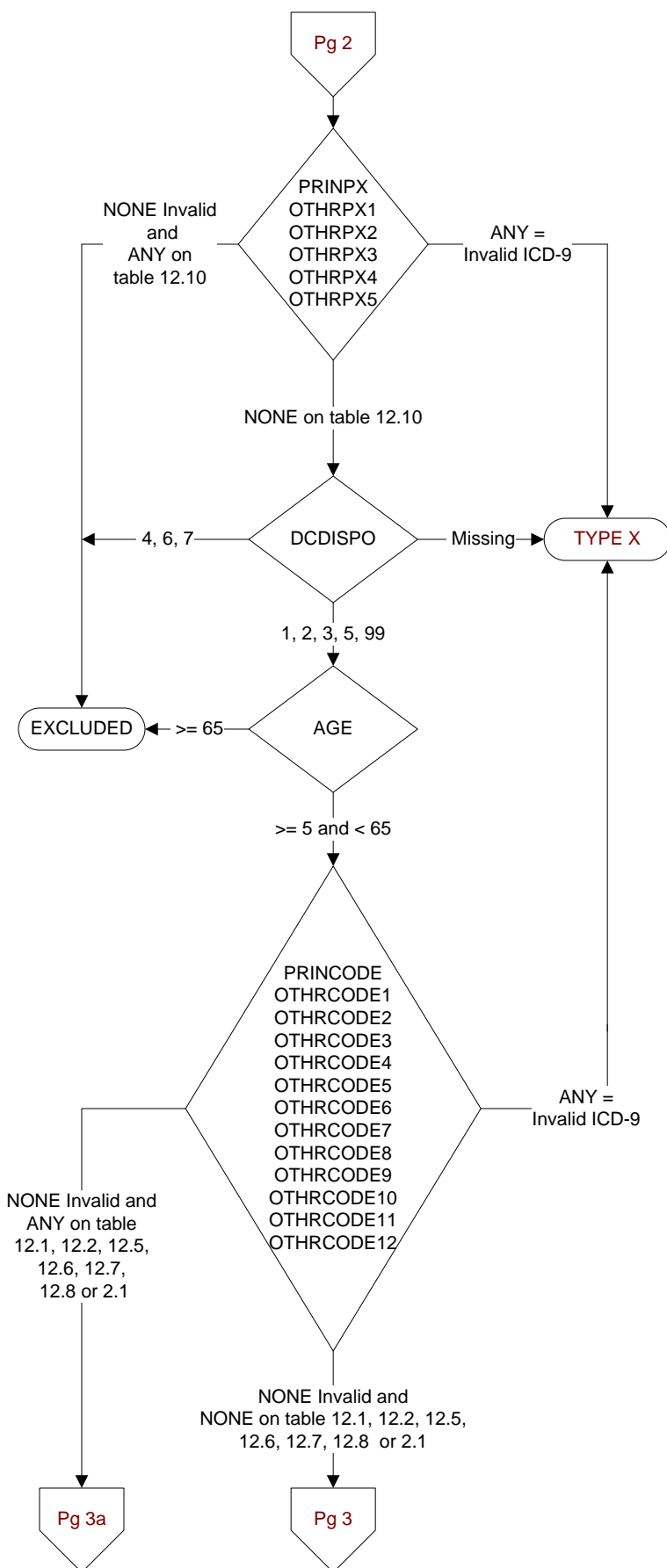
**BIRTHDT** (Global Measures)  
Patient date of birth

**AGE** (Calculated)  
ADMDT - BIRTHDT

**COGIMP** (Global Measures)  
Is there documentation in the medical record that indicates the patient is cognitively impaired?  
1. Yes  
2. No

**PRINCODE** (Global Measures)  
Enter the ICD-9-CM principal diagnosis code.

**OTHRCODE1-12** (Global Measures)  
Enter the ICD-9-CM other diagnosis codes:

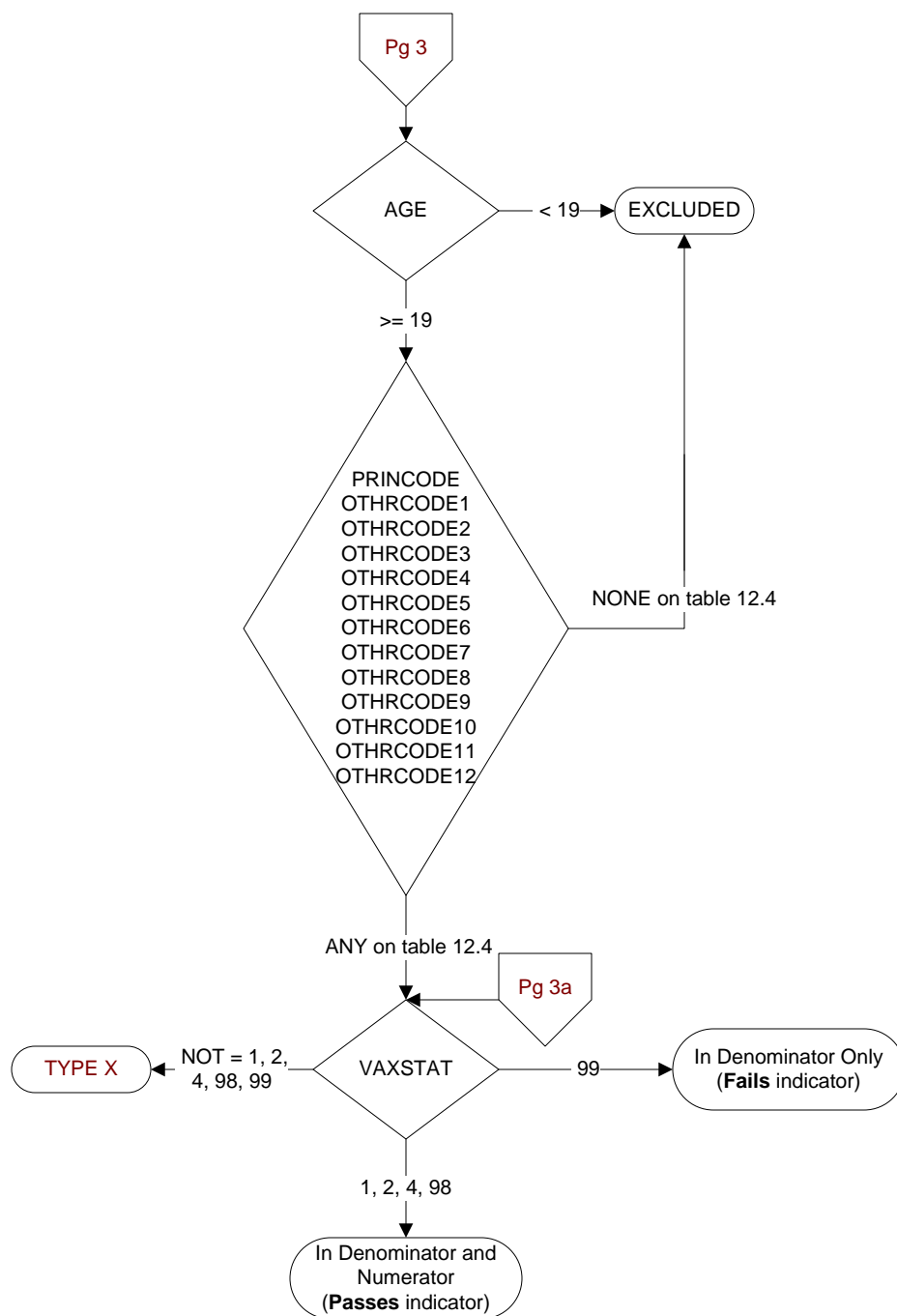


**PRINPX** (Global Measures)  
Enter the ICD-9-CM principal procedure code

**OTHRPX1-5** (Global Measures)  
Enter the ICD-9-CM other procedure codes

**DCDISPO** (Global Measures)  
What was the patient's discharge disposition on the day of discharge?

- Home
  - Assisted Living Facilities (ALFs) - includes assisted living care at nursing home/facility
  - Court/Law Enforcement – includes detention facilities, jails, and prison
  - Home – includes board and care, domiciliary, foster or residential care, group or personal care homes, retirement communities, and homeless shelters
  - Home with Home Health Services
  - Outpatient Services including outpatient procedures at another hospital, outpatient Chemical Dependency Programs and Partial Hospitalization
- Hospice – Home (or other home setting as listed in #1 above)
- Hospice – Health Care Facility
  - General Inpatient and Respite, Residential and Skilled Facilities, and Other Health Care Facilities
- Acute Care Facility
  - Acute Short Term General and Critical Access Hospitals
  - Cancer and Children's Hospitals
  - Department of Defense and Veteran's Administration Hospitals
- Other Health Care Facility
  - Extended or Immediate Care Facility (ECF/ICF)
  - Long Term Acute Care Hospital (LTACH)
  - Nursing Home or Facility including Veteran's Administration Nursing Facility
  - Psychiatric Hospital or Psychiatric Unit of a Hospital
  - Rehabilitation Facility including Inpatient Rehabilitation Facility/Hospital or Rehabilitation Unit of a Hospital
  - Skilled Nursing Facility (SNF), Sub-Acute Care or Swing Bed
  - Transitional Care Unit (TCU)
  - Veteran's Home
- Expired
- Left Against Medical Advice/AMA
99. Not documented or unable to determine

**VAXSTAT** (Global Measures)

What is the patient's pneumococcal vaccination status?

1. Pneumococcal vaccination was given during this hospitalization
2. Pneumococcal vaccination was received in the past, not during this hospitalization

4. Documentation of:

- Allergy/sensitivity to pneumococcal vaccine, OR
- Is not likely to be effective because of bone marrow transplant (or autologous stem cell transplant, ASCT) within the past 12 months, OR
- Currently receiving a scheduled course of chemotherapy or radiation therapy, or received a chemotherapy or radiation during this hospitalization or less than 2 weeks prior, OR
- Received the shingles vaccine (Zostavax) within the last 4 weeks

95. Not applicable

98. Documentation of patient's or caregiver's refusal of pneumococcal vaccine

99. None of the above/not documented/unable to determine from medical record documentation