

REVSTAT

REVIEW STATUS (not abstracted)

0. Abstraction has not begun
1. Abstraction in progress
2. Abstraction completed w/o errors
3. TVG failure (exclusion)
4. Record contains missing required answers (error record)
5. Administrative Exclusion

HCSTATUS (HBPC)

Counting from the most recent HBPC encounter within the study interval, enter the patient's status in regard to HBPC admission:

2. HBPC admission greater than or equal to 30 days but less than or equal to 1 year
3. HBPC admission greater than one year (>365 days from the admission date)

STDYBEG

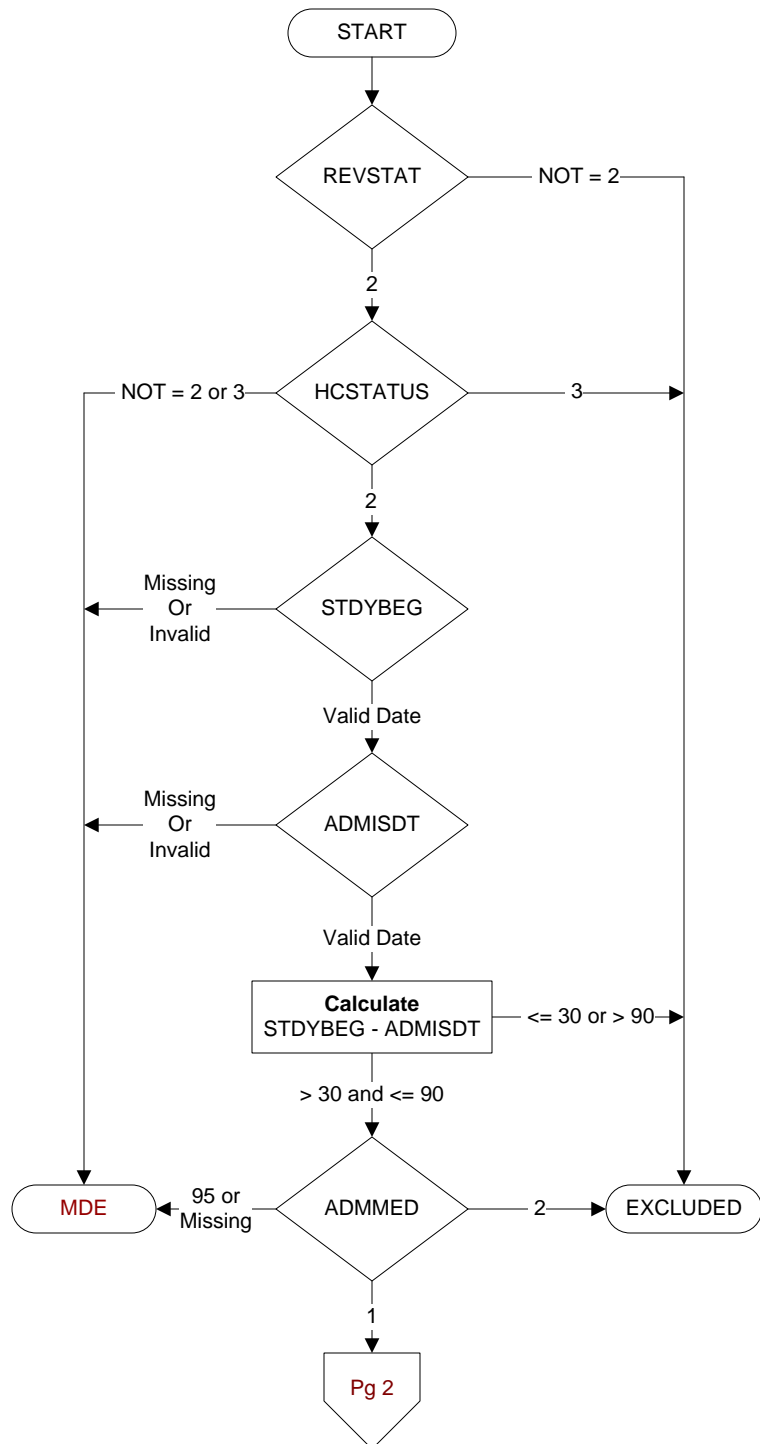
Study Begin date - not abstracted - received on pull list

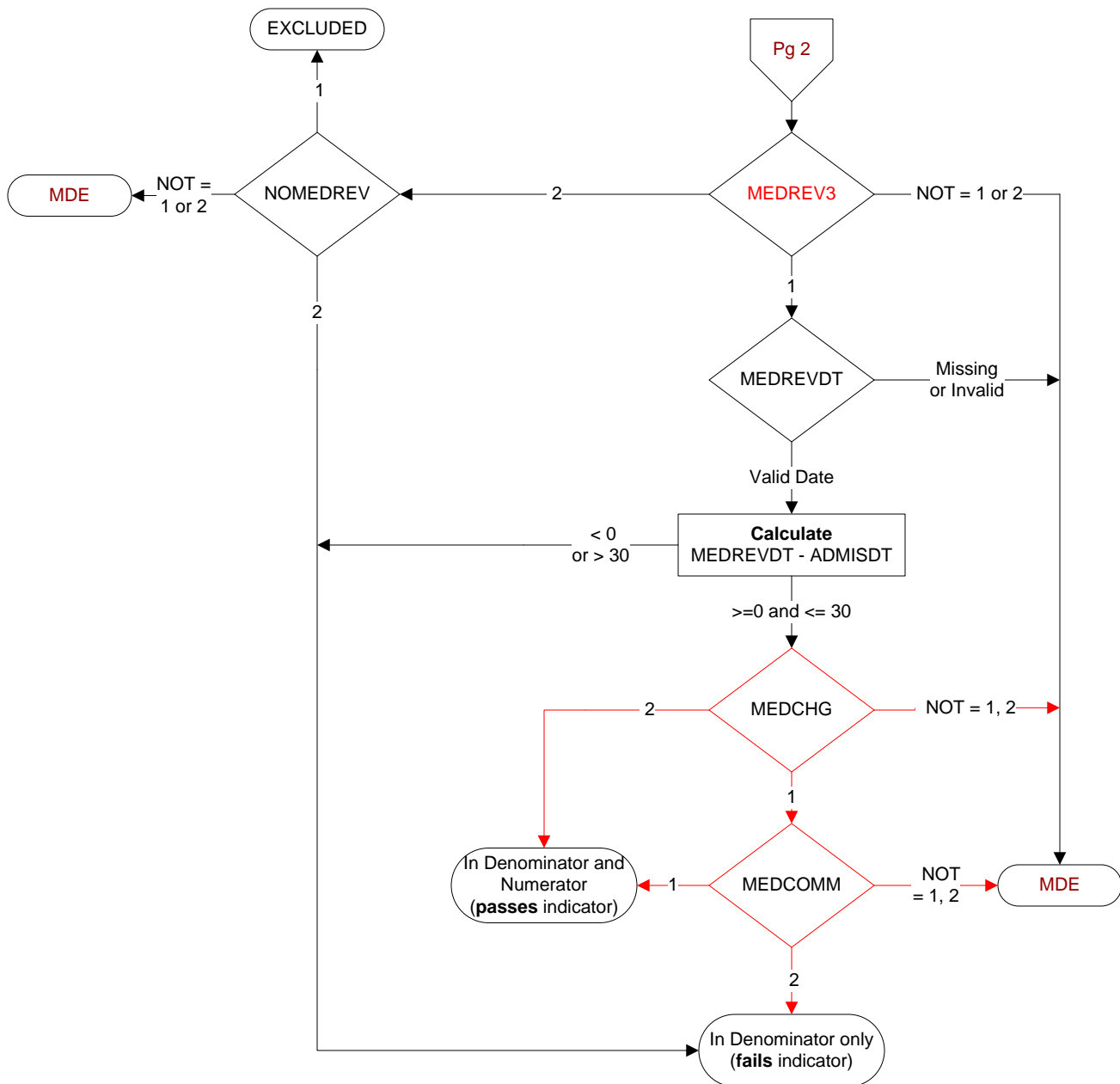
ADMISDT (HBPC)Enter the HBPC admission date. **Admission date is date of the progress note documenting admission.****ADMMED** (HBPC)

At the time of HBPC admission, was the patient on at least one medication?

1. Yes
2. No

MDE = Missing or
Invalid Data Exclusion
(data error)



**MEDREV3 (HBPC)**

Did the record document the patient's HBPC medication management plan in a note signed by the pharmacist?

1. Yes
2. No

MEDREVDT (HBPC)

Enter the date of the medication management plan review.

NOMEDREV (HBPC)

Did the record document the patient was hospitalized during the time the medication management plan was to be reviewed?

1. Yes
2. No

MEDCHG (HBPC)

Did the pharmacist make any recommendation for change in the patient's medication regimen?

1. Yes
2. No

MEDCOMM (HBPC)

Did the pharmacist communicate any change in the patient's medication regimen to the HBPC or primary care provider?

1. Yes
2. No