

**REVSTAT**

REVIEW STATUS (not abstracted)

- 0. Abstraction has not begun
- 1. Abstraction in progress
- 2. Abstraction completed w/o errors
- 3. TVG failure (exclusion)
- 4. Record contains missing required answers (error record)
- 5. Administrative Exclusion

**HCSTATUS** (HBPC)

Counting from the most recent HBPC encounter within the study interval, enter the patient's status in regard to HBPC admission:

- 2. HBPC admission greater than or equal to 30 days but less than or equal to 1 year
- 3. HBPC admission greater than one year (>365 days from the admission date)

**STDYBEG** (rcvd on pull list)

Study Begin date

**ADMISDT** (HBPC)Enter the HBPC admission date. **Admission date is date of the progress note documenting admission.****HOSPICE** (HBPC)

Is the patient receiving hospice care?

- 1. Yes
- 2. No

**ALREDDX** (HBPC)

Does the medical record document the patient has a known diagnosis of any of the following:

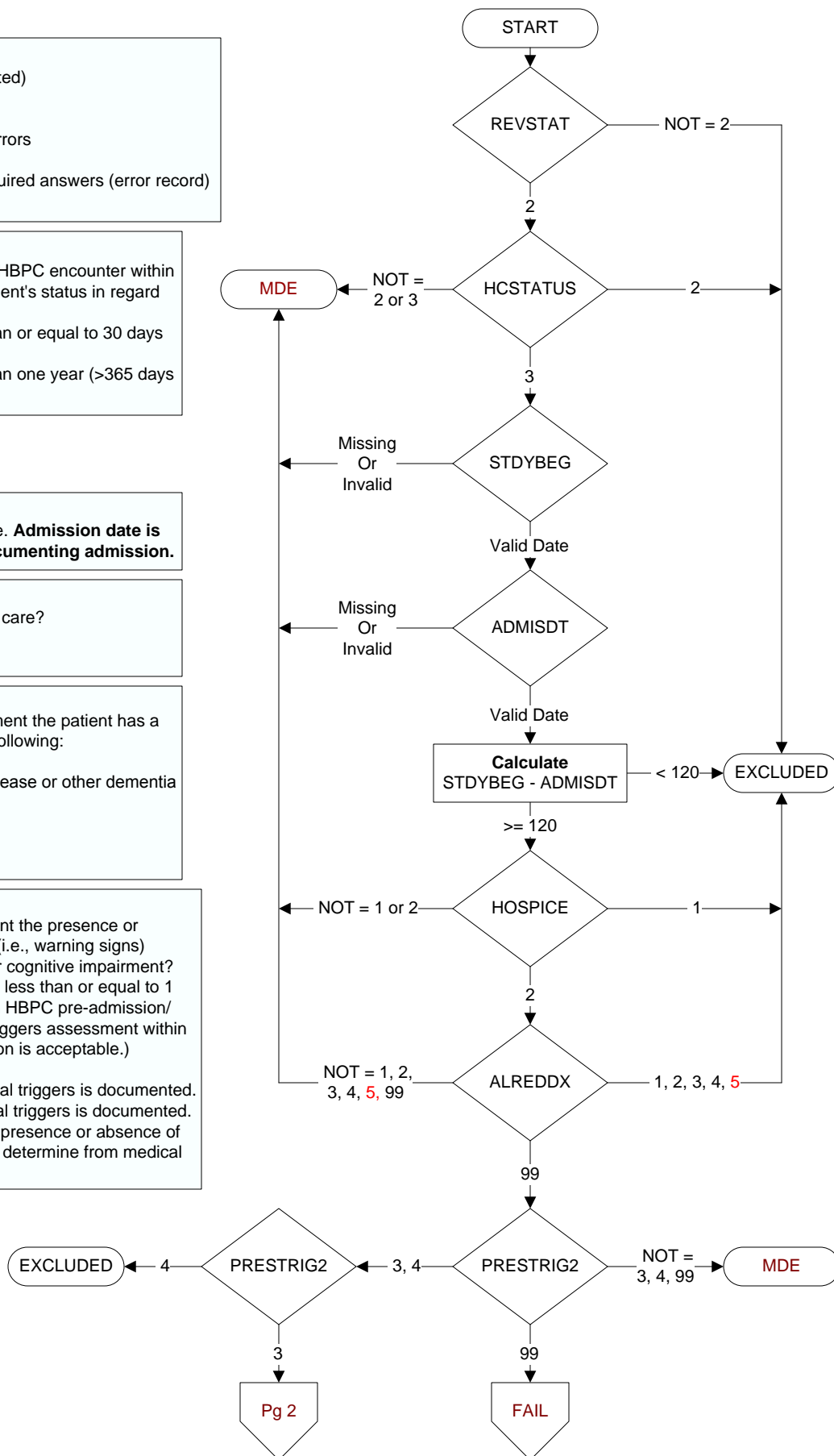
- 1. aphasia
- 2. dementia of Alzheimer's disease or other dementia
- 3. delirium, current
- 4. comatose state
- 5. Traumatic Brain Injury
- 99. none of these diagnoses

**PRESTRIG2** (HBPC)

Did the HBPC clinician document the presence or absence of behavioral triggers (i.e., warning signs) suggestive of dementia or other cognitive impairment? (For patients admitted to HBPC less than or equal to 1 year, clinician documentation in HBPC pre-admission/ admission note of behavioral triggers assessment within 30 days prior to HBPC admission is acceptable.)

- 3. Yes: **Presence** of behavioral triggers is documented.
- 4. Yes: **Absence** of behavioral triggers is documented.
- 99. No: **No documentation** of presence or absence of behavioral triggers or unable to determine from medical record documentation.

**MDE = Missing or Invalid Data Exclusion (data error)**



Pg 2

**ASESCOG (HBPC)**

Was the patient's cognitive function assessed using a standardized and published tool?  
(For patients admitted to HBPC less than or equal to 1 year, HBPC clinician documentation in HBPC pre-admission/admission note of assessment of cognitive function within 30 days prior to HBPC admission is acceptable.)

1. Yes
2. No
98. Patient refused assessment of cognitive function

**COGDT (HBPC)**

Enter the date of the most recent assessment of cognitive function using a standardized and published tool.  
(For patients admitted to HBPC less than or equal to 1 year, HBPC clinician documentation in HBPC pre-admission/admission note of assessment of cognitive function within 30 days prior to HBPC admission is acceptable.)

**COGOUT (HBPC)**

Is the outcome of the cognitive assessment documented in the medical record?

1. yes
2. no

**IMPAIR (HBPC)**

Did the assessment outcome indicate any degree of cognitive impairment for this patient?

1. yes
2. no

**ADDFOLO (HBPC)**

During the timeframe from (computer to display cogdt to cogdt + 30 days and < stdyend), did the HBPC clinician document a plan for follow-up of the positive cognitive assessment?

1. yes
2. no

