

REVSTAT

REVIEW STATUS (not abstracted)

0. Abstraction has not begun
1. Abstraction in progress
2. Abstraction completed w/o errors
3. TVG failure (exclusion)
4. Record contains missing required answers (error record)
5. Administrative exclusion from all measures

LEFDATE (Validation)

Discharge date (received on pull list and may not be modified)

ADMDT (Validation)

Date of admission to acute inpatient care

BIRTHDT

Patient date of birth (received on pull list)

AGE

Calculated field: ADMDT - BIRTHDT

CXRCTABN (Validation)

Using the inclusion list, was any chest x-ray or CT scan obtained the day of or day prior to hospital arrival OR anytime during this hospital stay **abnormal**?

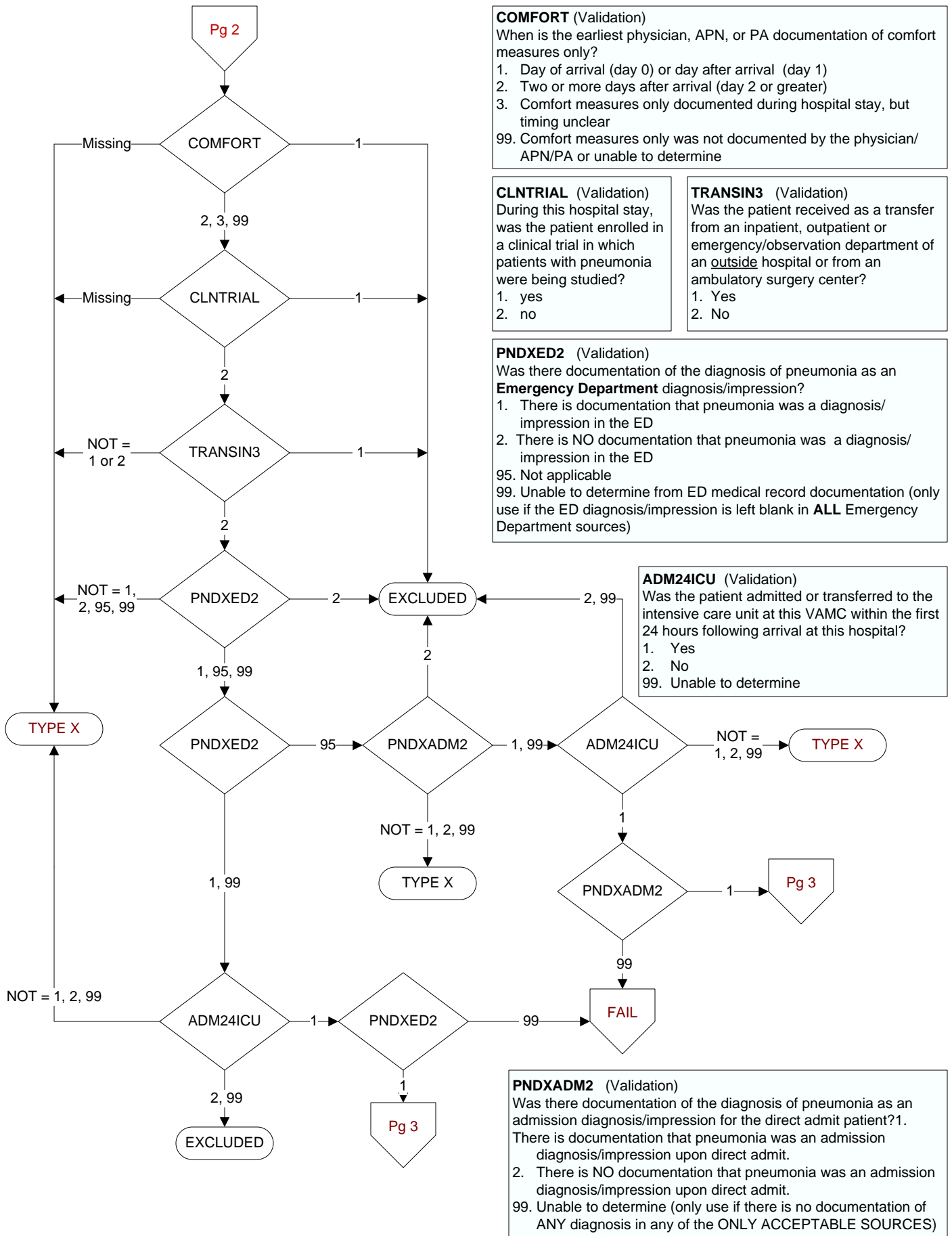
(SEE INCLUSION LIST)

1. Yes, a chest x-ray or CT scan done within the designated timeframe was abnormal (included ANY inclusion terms).
2. No, a chest x-ray/CT scan done within the designated timeframe was not abnormal (did not include ANY inclusion terms).
99. Unable to determine from medical record documentation if the chest x-ray or CT scan done during the designated timeframe was abnormal

CXRDONE (Validation)

Did the patient have a chest x-ray or CT scan on the day of or the day prior to hospital arrival OR anytime during this hospital stay?

1. Yes
2. No



ABRECVD (Acute Care)

Did the patient receive antibiotics via an appropriate route (PO, NG, PEG, IM, or IV)?

1. Antibiotic received only within 24 hours prior to arrival or the day prior to arrival and not during hospital stay
2. Antibiotic received within 24 hours prior to arrival or the day prior to arrival and during hospital stay
3. Antibiotic received only during hospital stay (not prior to arrival)
4. Antibiotic not received or unable to determine from medical record documentation

OTHRCOND (Acute Care)

Is there documentation the patient has a condition that justifies an alternative antimicrobial regimen?

Determined by the presence of one of the following:

- Risk for Healthcare-Associated PN
 - Acute care hospitalization within the last 90 days
 - Residence in a nursing home or extended care facility for any amount of time within the last 90 days
 - Chronic dialysis within the last 30 days prior to this hospitalization
 - Wound care, tracheostomy, or ventilator care provided by a health care professional within the last 30 days
- Physician/APN/PA or pharmacist documentation the patient has healthcare-associated pneumonia
- Physician/APN/PA or pharmacist documented prolonged QT interval within 24 hours of hospital arrival

1. Yes
2. No, or unable to determine

COMPCOND (Acute Care)

Is there documentation the patient had a compromising condition/therapy? (see definitions/decision rules for additional instructions)

No timeframe necessary:

- AIDS, AIDS related complex (ARC)
- HIV, HIV positive
- Any "Immunodeficiency Syndrome"
- Chronic Lymphocytic Leukemia (CLL)
- Congenital or hereditary Immunodeficiency
- Organ transplant

Within the last 3 months OR as diagnosed/administered for the first time during this hospitalization:

- Leukemia
- Lymphocytic leukemia
- Lymphoma
- Marked or significant neutropenia
- Myelogenic leukemia
- Myeloma
- Myelodysplasia
- Pancytopenia
- Systemic Chemotherapy
- Systemic Radiation therapy

Within the last 3 months prior to this hospitalization:

- Systemic Corticosteroid/prednisone therapy
- Systemic Chemotherapy
- Systemic Immunosuppressive therapy
- Systemic Radiation therapy

1. Yes
2. No or unable to determine

ROUTEADM (Acute Care)

Enter the route of administration of the antibiotic.

1. PO, NG, PEG tube (Oral)
2. IV (Intravenous)
3. IM (Intramuscular)
99. UTD (Unable to determine route)

ARRVDATE (Validation)

Enter the earliest documented date the patient arrived at acute care at this VAMC.

