

**REVSTAT**

REVIEW STATUS (not abstracted)

- 0. Abstraction has not begun
- 1. Abstraction in progress
- 2. Abstraction completed w/o errors
- 3. TVG failure (exclusion)
- 4. Record contains missing required answers (error record)
- 5. Administrative exclusion from all measures

**CATNUM**

Sample Cohort (rcvd on pull list)

- 29. Inpatient Heart Failure
- 53. Inpatient Surgery
- 55. Inpatient Tupe 10 Surgery

**CLNTRIAL (IHF)**

During this hospital stay, was the patient enrolled in a clinical trial in which patients with heart failure were being studied?

- 1. Yes
- 2. No

**CLNTRIAL (SCIP)**

During this hospital stay, was the patient enrolled in a clinical trial in which patients undergoing surgery were being studied?

- 1. Yes
- 2. No

**DCDISPO (IHF)**

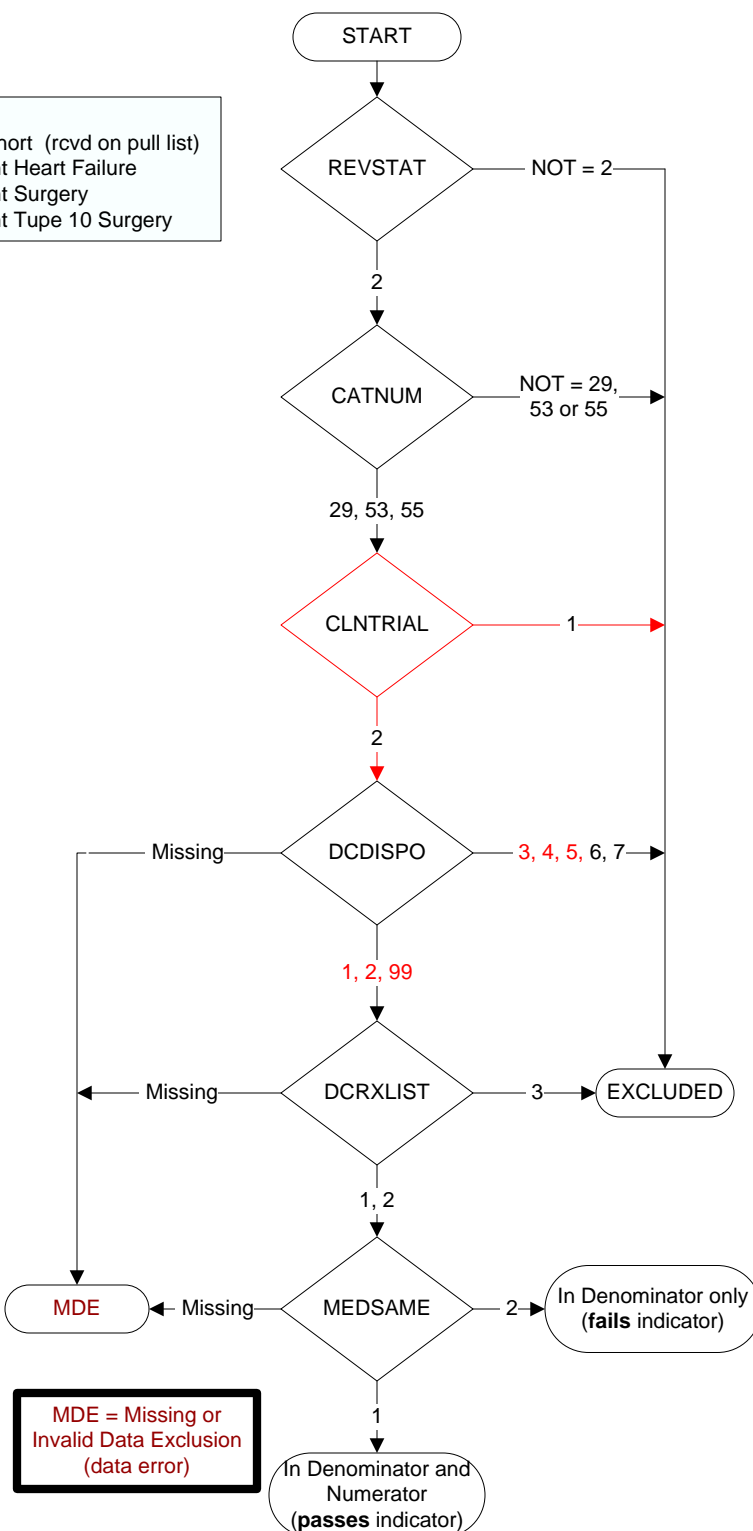
What was the patient's discharge disposition on the day of discharge?

- 1. Home
  - Assisted Living Facilities (ALFs) - includes assisted living care at nursing home facility
  - Court/Law Enforcement – includes detention facilities, jails, and prison
  - Home - includes board and care, domiciliary, foster or residential care, group or personal care homes, retirement communities, and homeless shelters
  - Home with Home Health Services
  - Outpatient Services including outpatient procedures at another hospital, outpatient Chemical Dependency Programs and Partial Hospitalization
- 2. Hospice – Home (or other home settings as listed in #1 above)
- 3. Hospice – Health Care Facility
  - General Inpatient and Respite, Residential and Skilled Facilities, and Other Health Care Facilities
- 4. Acute Care Facility
  - Acute Short Term General and Critical Access Hospitals
  - Cancer and Children's Hospitals
  - Department of Defense and Veteran's Administration Hospitals
- 5. Other Health Care Facility
  - Extended or Immediate Care Facility (ECF/ICF)
  - Long Term Acute Care Hospital (LTACH)
  - Nursing Home or Facility including Veteran's Administration Nursing Facility
  - Psychiatric Hospital or Psychiatric Unit of a Hospital
  - Rehabilitation Facility including Inpatient Rehabilitation Facility/ Hospital or Rehabilitation Unit of a Hospital
  - Skilled Nursing Facility (SNF), Sub-Acute Care or Swing Bed
  - Transitional Care Unit (TCU)
  - Veteran's Home
- 6. Expired
- 7. Left Against Medical Advice/AMA
- 99. Not documented or unable to determine

**DCRXLIST (IP MedRec)**

At the time of discharge, is there documentation that a written list of the reconciled discharge medications was provided to the patient/caregiver?

- 1. Yes
- 2. No
- 3. Documented medications were not prescribed at discharge

**MEDSAME (IP MedRec)**Were the medications listed on the patient's discharge instructions the same as the medications listed in the discharge summary?

- 1. Yes
- 2. No
- 95. Not applicable