

**REVSTAT**

REVIEW STATUS (not abstracted)

- 0. Abstraction has not begun
- 1. Abstraction in progress
- 2. Abstraction completed w/o errors
- 3. TVG failure (exclusion)
- 4. Record contains missing required answers (error record)
- 5. Administrative exclusion from all measures

**DCDATE** (Validation)

Enter the date of discharge. (rcvd on pull list)

**ADMDT** (Validation)

Enter the date the patient was formally admitted to inpatient status at this VAMC.

**TRUAMI** (Validation)

Is there evidence in the medical record that the patient had an acute myocardial infarction?

- 1. Yes
- 2. No

**CLNTRIAL** (Validation)

During this hospital stay, was the patient enrolled in a clinical trial in which patients with acute myocardial infarction (AMI) were being studied? (Includes AMI, STEMI, NSTEMI, or heart attack)

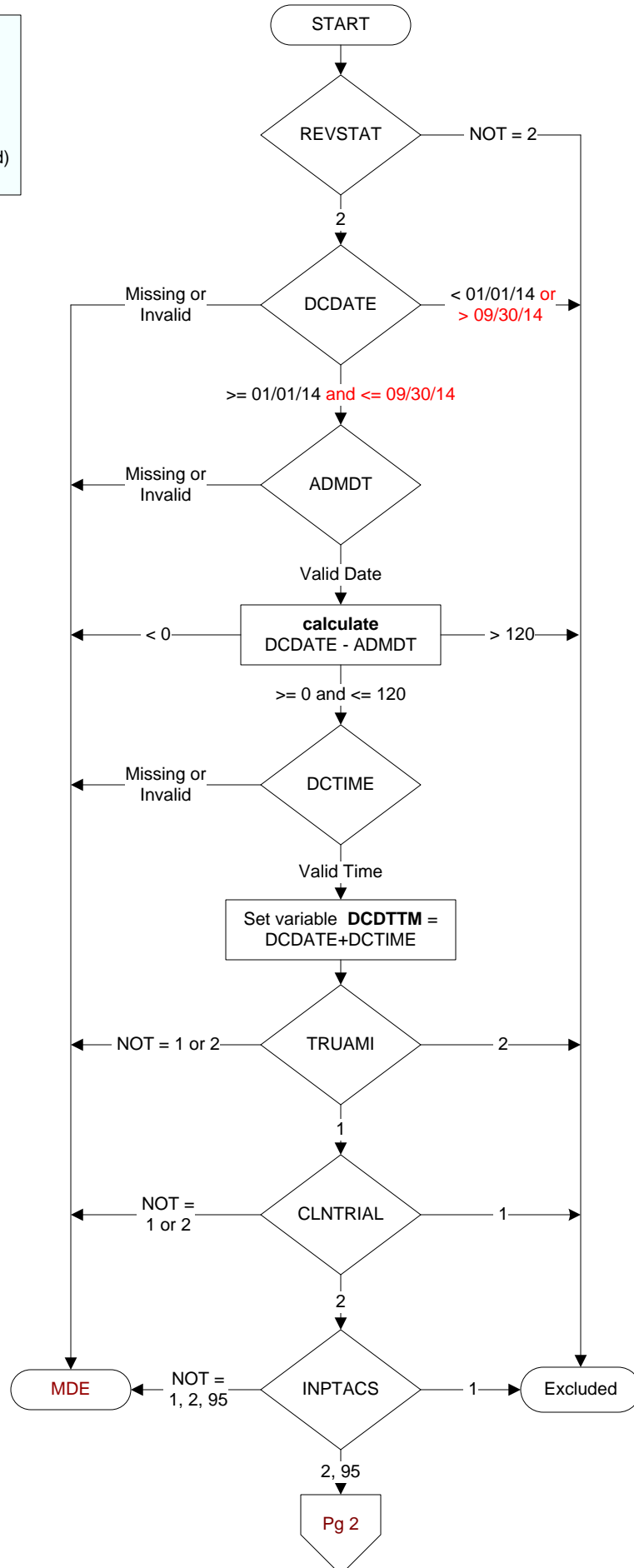
- 1 = Yes
- 2 = No

**INPTACS** (Validation)

Was the veteran already a VAMC inpatient when ACS occurred?

- 1. yes
- 2. no
- 95. not applicable

**MDE = Missing or  
Invalid Data Exclusion  
(data error)**



**COMFORT** (Validation)

When is the earliest physician, APN, or PA documentation of comfort measures only?

1. Day of arrival (day 0) or day after arrival (day 1)
2. 2 or more days after arrival (day 2 or greater)
3. Comfort measures only documented during hospital stay, but timing unclear
99. Not documented or unable to determine

**DONOTX** (Validation)

Is there explicit documentation of the decision not to treat during this episode of care?

1. Yes
2. No
95. Not applicable

**NOTX1DT** (Validation)

Enter the date the decision not to treat was documented in the record.

**NOTX1TM** (Validation)

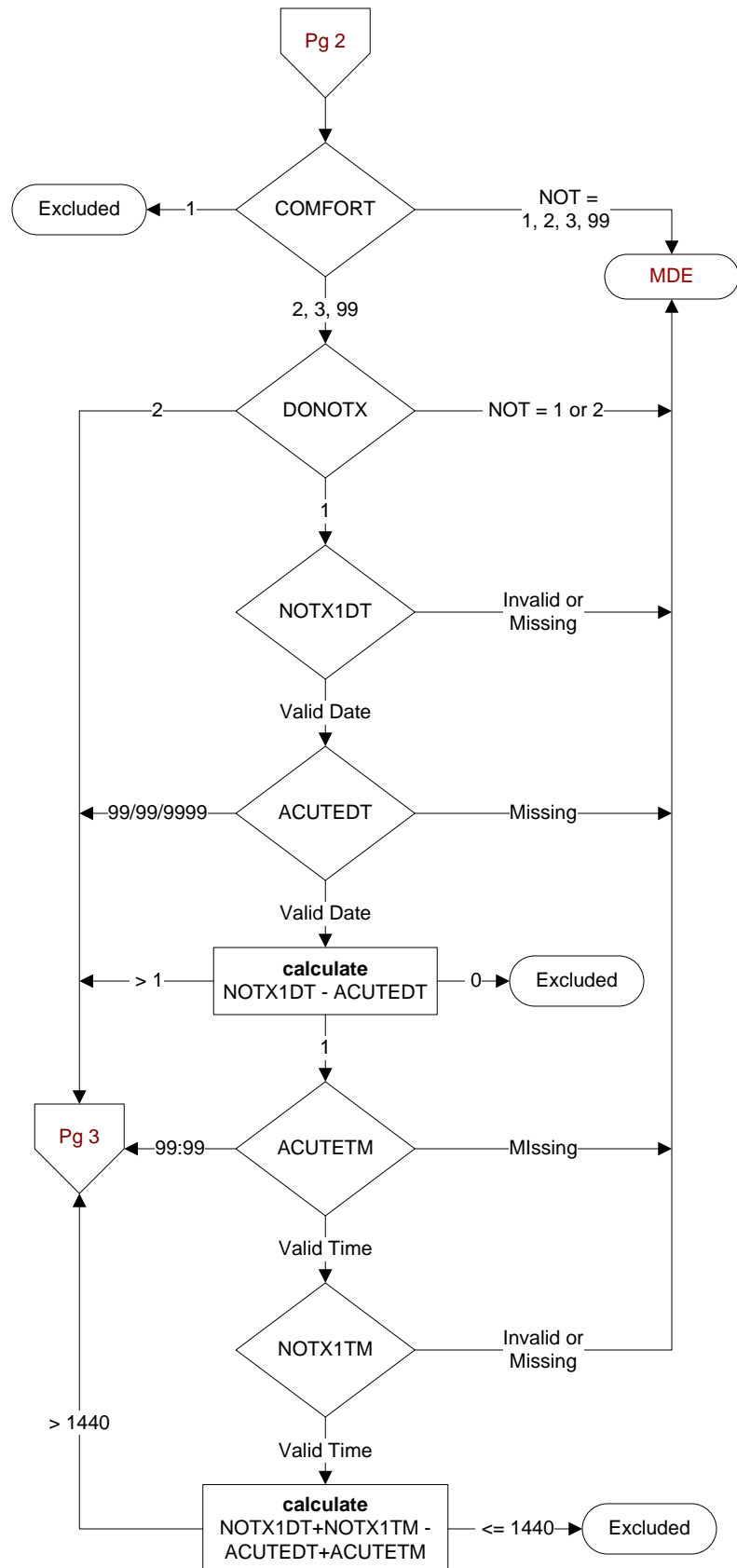
Enter the time the decision not to treat was documented in the record.

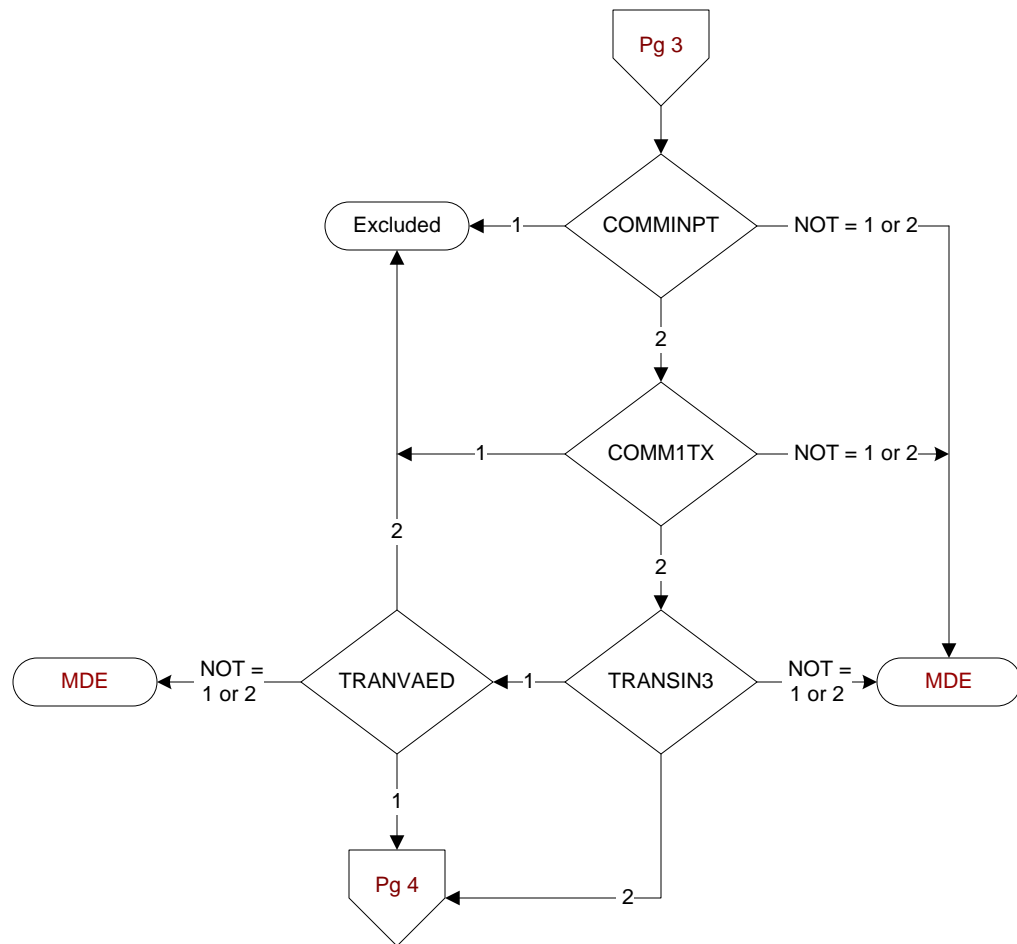
**ACUTEDT** (Validation)

Enter the earliest documented date the patient arrived at this or another VAMC.

**ACUTETM** (Validation)

Enter the earliest documented time the patient arrived at this or another VAMC.





**COMMINPT** (Validation)

Was the patient a transfer from a community hospital where he/she was an inpatient for ACS care?

1. Yes
2. No

**COMM1TX** (Validation)

Did the patient present initially to a community hospital where he/she received all or part of the first 24 hours of care for ACS?

1. Yes
2. No

**TRANSIN3** (Validation)

Was the patient received as a transfer from an inpatient, outpatient or emergency/observation department of an outside hospital or from an ambulatory surgery center?

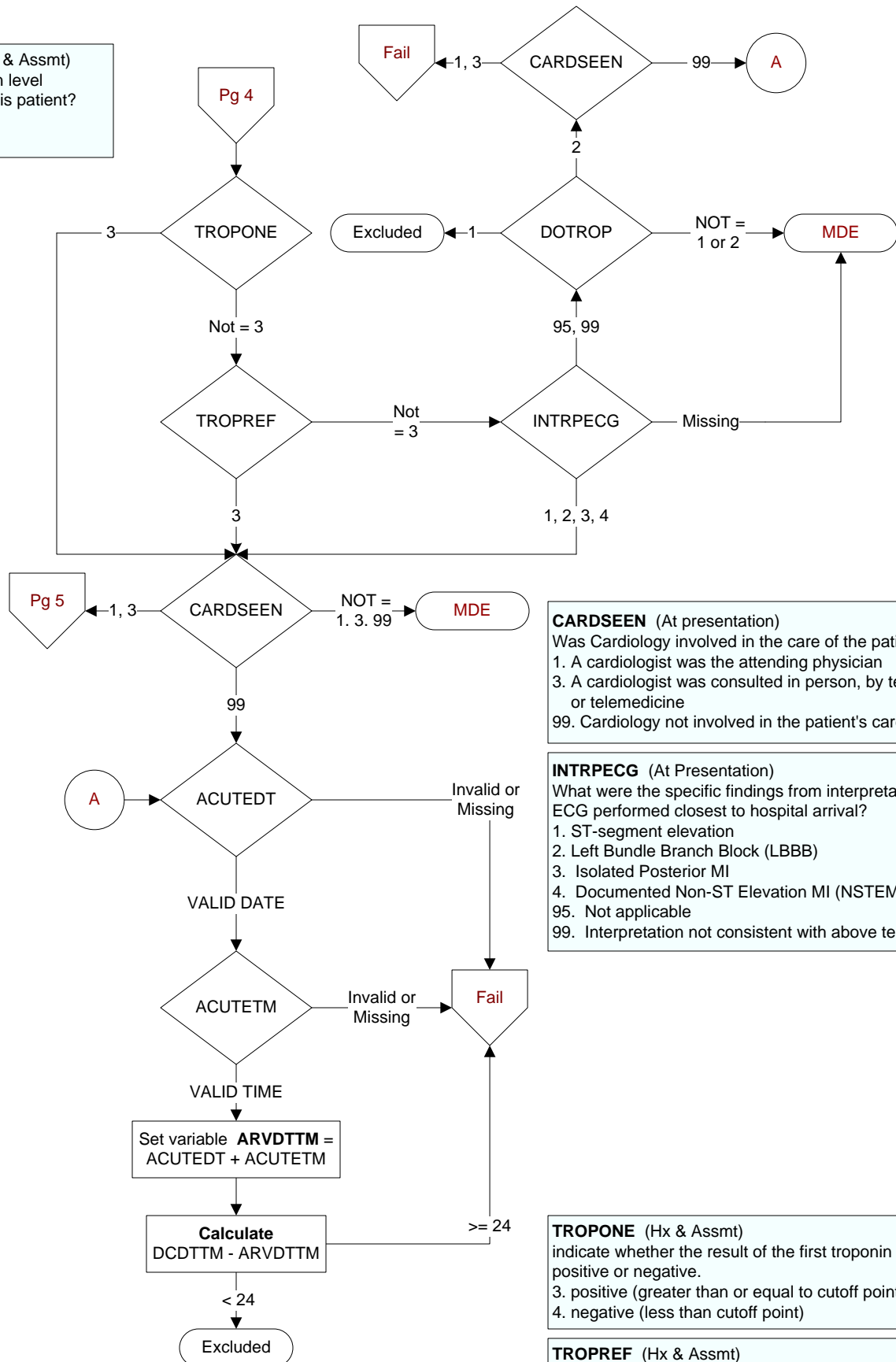
1. Yes
2. No

**TRANVAED** (Validation)

Was the patient received from the emergency department of another VAMC?

1. Yes
2. No
95. Not applicable

**DOTROP** (Hx & Assmt)  
Was a troponin level collected for this patient?  
1. Yes  
2. No



#### CARDSEEN (At presentation)

Was Cardiology involved in the care of the patient?

- 1. A cardiologist was the attending physician
- 3. A cardiologist was consulted in person, by telephone, or telemedicine
- 99. Cardiology not involved in the patient's care

#### INTRPECG (At Presentation)

What were the specific findings from interpretation of the ECG performed closest to hospital arrival?

- 1. ST-segment elevation
- 2. Left Bundle Branch Block (LBBB)
- 3. Isolated Posterior MI
- 4. Documented Non-ST Elevation MI (NSTEMI)
- 95. Not applicable
- 99. Interpretation not consistent with above terminology

#### TROPONE (Hx & Assmt)

indicate whether the result of the first troponin level was positive or negative.

- 3. positive (greater than or equal to cutoff point)
- 4. negative (less than cutoff point)

#### TROPREF (Hx & Assmt)

Indicate whether the result of the highest/peak troponin level was positive or negative.

- 3. positive (greater than or equal to cutoff point)
- 4. negative (less than cutoff point)

