

**REVSTAT**

REVIEW STATUS (not abstracted)

- 0. Abstraction has not begun
- 1. Abstraction in progress
- 2. Abstraction completed w/o errors
- 3. TVG failure (exclusion)
- 4. Record contains missing required answers (error record)
- 5. Administrative exclusion from all measures

**DCDATE** (Validation)

Enter the date of discharge. (received on pull list and may not be modified)

**ADMDT** (Validation)

Enter the date the patient was formally admitted to inpatient status at this VAMC.

**TRUAMI** (Validation)

Is there evidence in the medical record that the patient had an acute myocardial infarction?

- 1 = Yes
- 2 = No

**COMFORT** (Validation)

When is the earliest physician, APN, or PA documentation of comfort measures only?

- 1. Day of arrival (day 0) or day after arrival (day 1)
- 2. Two or more days after arrival (day 2 or greater)
- 3. Comfort measures only documented during hospital stay, but timing unclear
- 99. Comfort measures only was not documented by the physician/ APN/PA or unable to determine

**DONOTX** (Validation)

Is there explicit documentation of the decision not to treat during this episode of care?

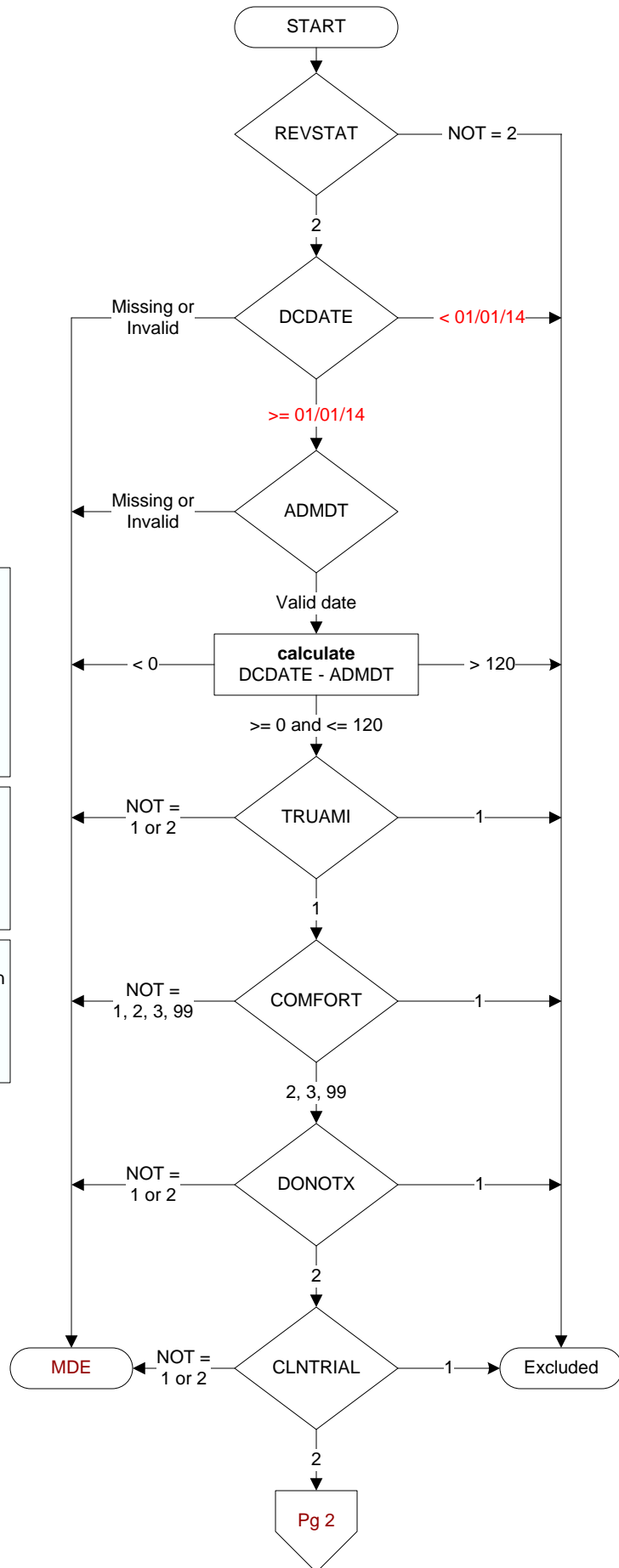
- 1. Yes
- 2. No
- 95. Not applicable

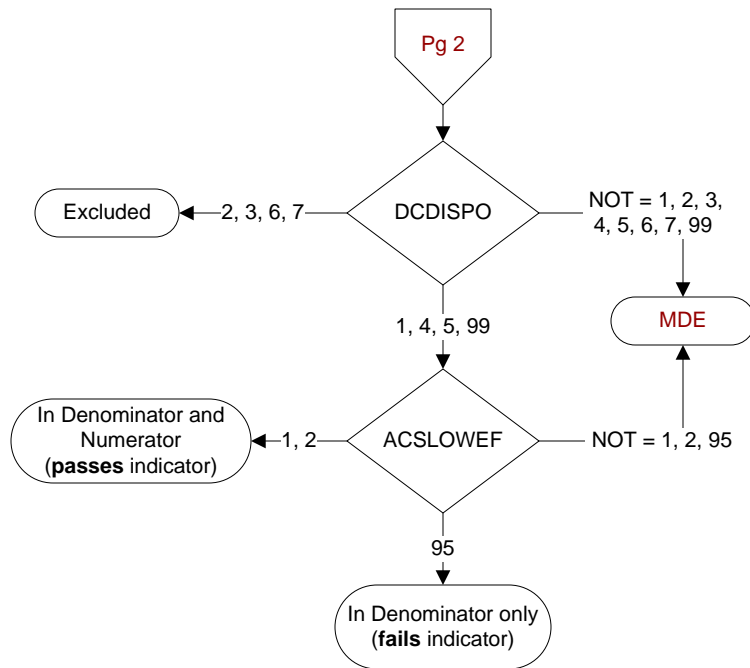
**CLNTRIAL** (Validation)

During this hospital stay, was the patient enrolled in a clinical trial in which patients with acute myocardial infarction (AMI) were being studied?

- 1 = Yes
- 2 = No

**MDE = Missing or  
Invalid Data Exclusion  
(data error)**



**DCDISPO** (Validation)

What was the patient's discharge disposition on the day of discharge?

## 1. Home

- Assisted Living Facilities (ALFs) - includes assisted living care at nursing home facility
- Court/Law Enforcement – includes detention facilities, jails, and prison
- Home - includes board and care, domiciliary, foster or residential care, group or personal care homes, retirement communities, and homeless shelters
- Home with Home Health Services
- Outpatient Services including outpatient procedures at another hospital, outpatient Chemical Dependency Programs and Partial Hospitalization

## 2. Hospice – Home (or other home setting as listed in #1 above)

## 3. Hospice – Health Care Facility

- General Inpatient and Respite, Residential and Skilled Facilities, and Other Health Care Facilities

## 4. Acute Care Facility

- Acute Short Term General and Critical Access Hospitals
- Cancer and Children's Hospitals
- Department of Defense and Veteran's Administration Hospitals

## 5. Other Health Care Facility

- Extended or Immediate Care Facility (ECF/ICF)
- Long Term Acute Care Hospital (LTACH)
- Nursing Home or Facility including Veteran's Administration Nursing Facility
- Psychiatric Hospital or Psychiatric Unit of a Hospital
- Rehabilitation Facility including Inpatient Rehabilitation Facility/Hospital or Rehabilitation Unit of a Hospital
- Skilled Nursing Facility (SNF), Sub-Acute Care or Swing Bed
- Transitional Care Unit (TCU)
- Veteran's Home

## 6. Expired

## 7. Left Against Medical Advice/AMA

## 99. Not documented or unable to determine

**ACSLWEF** (Cont Care)

Is the left ventricular systolic function documented as an ejection fraction (EF) less than 40% or narrative description consistent with moderate or severe systolic dysfunction?

## 1. yes

## 2. no

## 95. not applicable