

CATNUM

Sample category
 16. AMI - Outpatient visit
 36. SCI Dx
 48. Female, age 20-69
 50. Random Sample
 51. Random Sample MH
 54. Frail/Elderly
 60. DM Outpatient
 61. Inpatient SC
 68. Contract CBOC

OTHCARE (Validation)

Is there evidence in the medical record that within the past two years, the patient refused VHA Primary Care and is receiving ONLY his/her primary care in a non-VHA setting?
 1. yes
 2. no

AGE

Calculated field (NEXUSDT - BIRTHDT).

REVSTAT

REVIEW STATUS (not abstracted)

- 0. Abstraction has not begun
- 1. Abstraction in progress
- 2. Abstraction completed w/o errors
- 3. TVG failure (exclusion)
- 4. Record contains missing required answers (error record)
- 5. Administrative exclusion from all measures

ASKFALLS (Core)

During the past twelve months, was the patient asked about the presence/absence of any falls during the preceding 12 months?

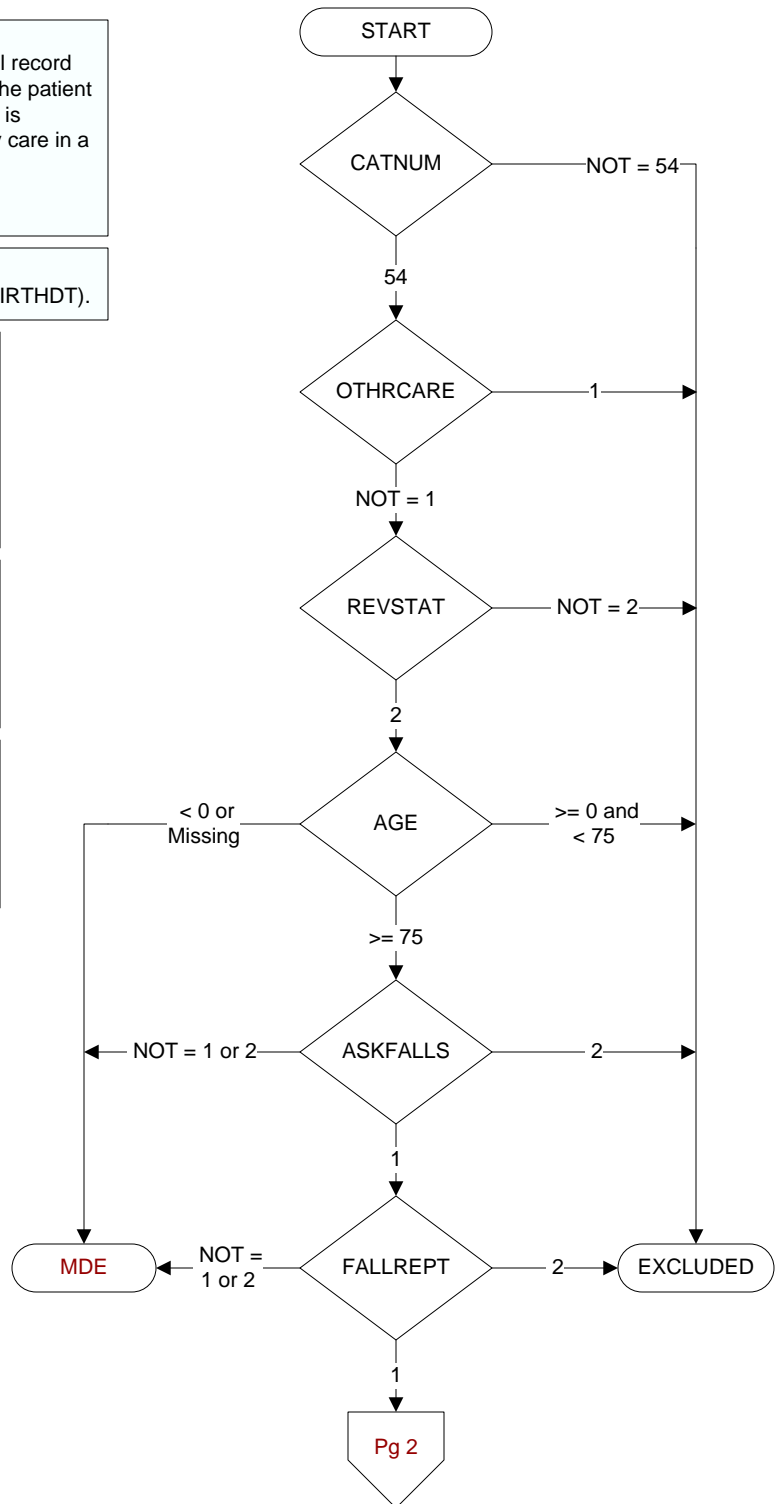
- 1. Yes
- 2. No

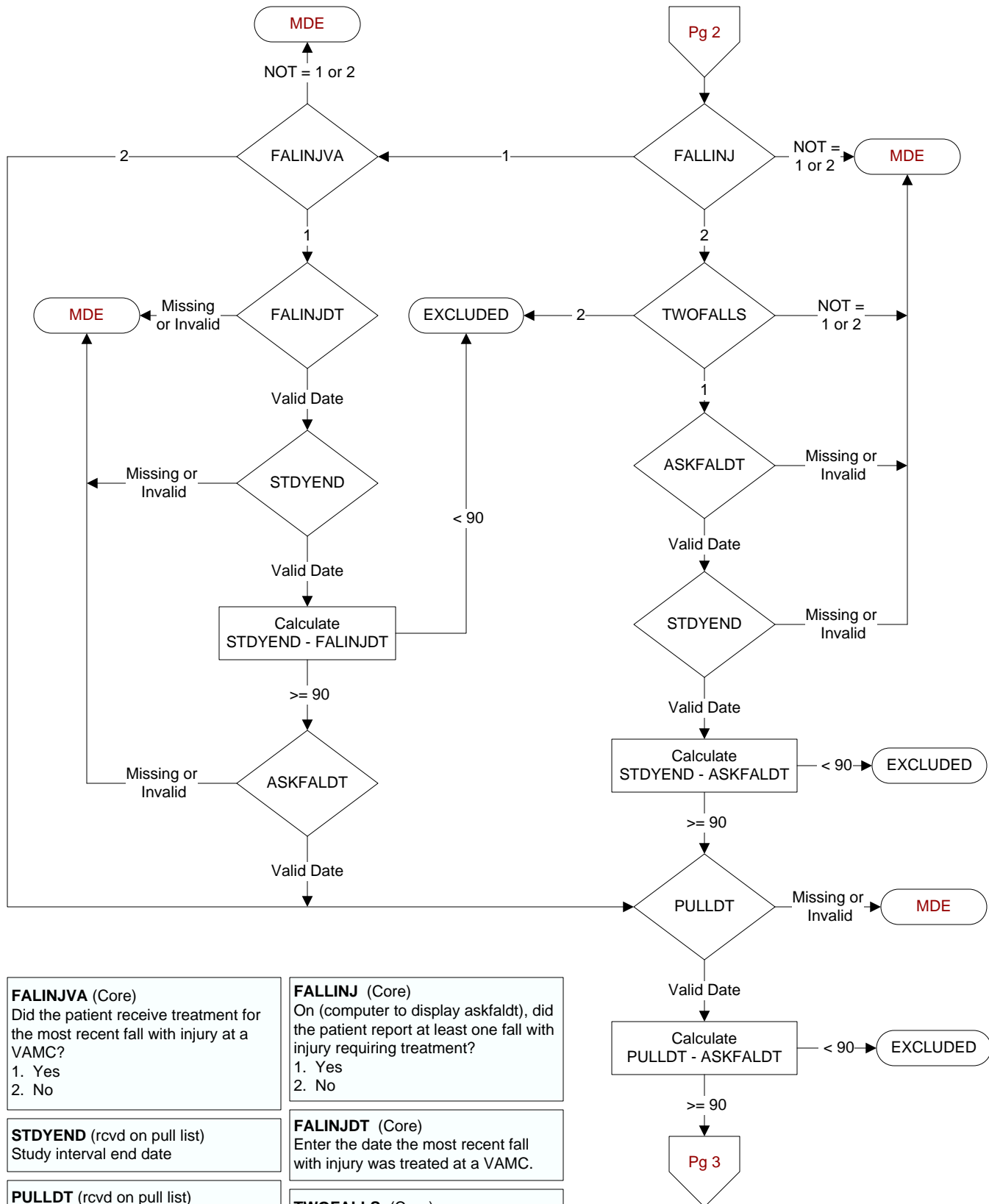
FALLREPT (Core)

During the falls assessment on (computer to display askfaldt), did the patient report a fall occurred during the preceding 12 months?

- 1. Yes
- 2. No

**MDE = Missing or
Invalid Data Exclusion
(data error)**





FALEYEX (Core)

During the time frame from (computer to display time frame), does the record document an eye exam was performed?

1. Yes
2. No

ORHTOBP (Core)

During the time frame from (computer to display time frame), does the record document assessment of orthostatic blood pressure?

1. Yes
2. No

GAITEVAL (Core)

During the time frame from (computer to display time frame), does the record document a basic gait evaluation was completed?

1. Yes
2. No

BALEVAL (Core)

During the time frame from (computer to display time frame), does the record document a balance evaluation was completed?

1. Yes
2. No

NEUROEVL (Core)

During the time frame from (computer to display time frame), does the record document a neurologic exam was completed?

1. Yes
2. No

ASESHAZ (Core)

During the time frame from (computer to display time frame), does the record document an assessment of home hazards?

1. Yes
2. No

HAZMOD (Core)

On the date the home hazards assessment was completed, does the record document modification of home hazards was recommended to the patient/ caregiver?

1. Yes
2. No
95. Not applicable

IDHAZARD (Core)

Were any home hazards identified?

1. Yes
2. No
95. Not applicable

**** timeframe ** (Core)**

If falinjva = 1, computer to display (falinjdt to askfaldt + 3months)

If falinjva = 2 or twofalls = 1, computer to display (askfaldt to askfaldt + 3 months)

