**REVSTAT**

REVIEW STATUS (calculated)

0. Abstraction has not begun
1. Abstraction in progress
2. Abstraction completed w/o errors
3. TVG failure (exclusion)
4. Record contains missing required answers (error record)
5. Administrative Exclusion

DCDT (Global Measures)

Discharge date (rcvd on pull list and may not be modified)

ADMDT (Global Measures)

Admission date:

BIRTHDT (Global Measures)

Patient date of birth

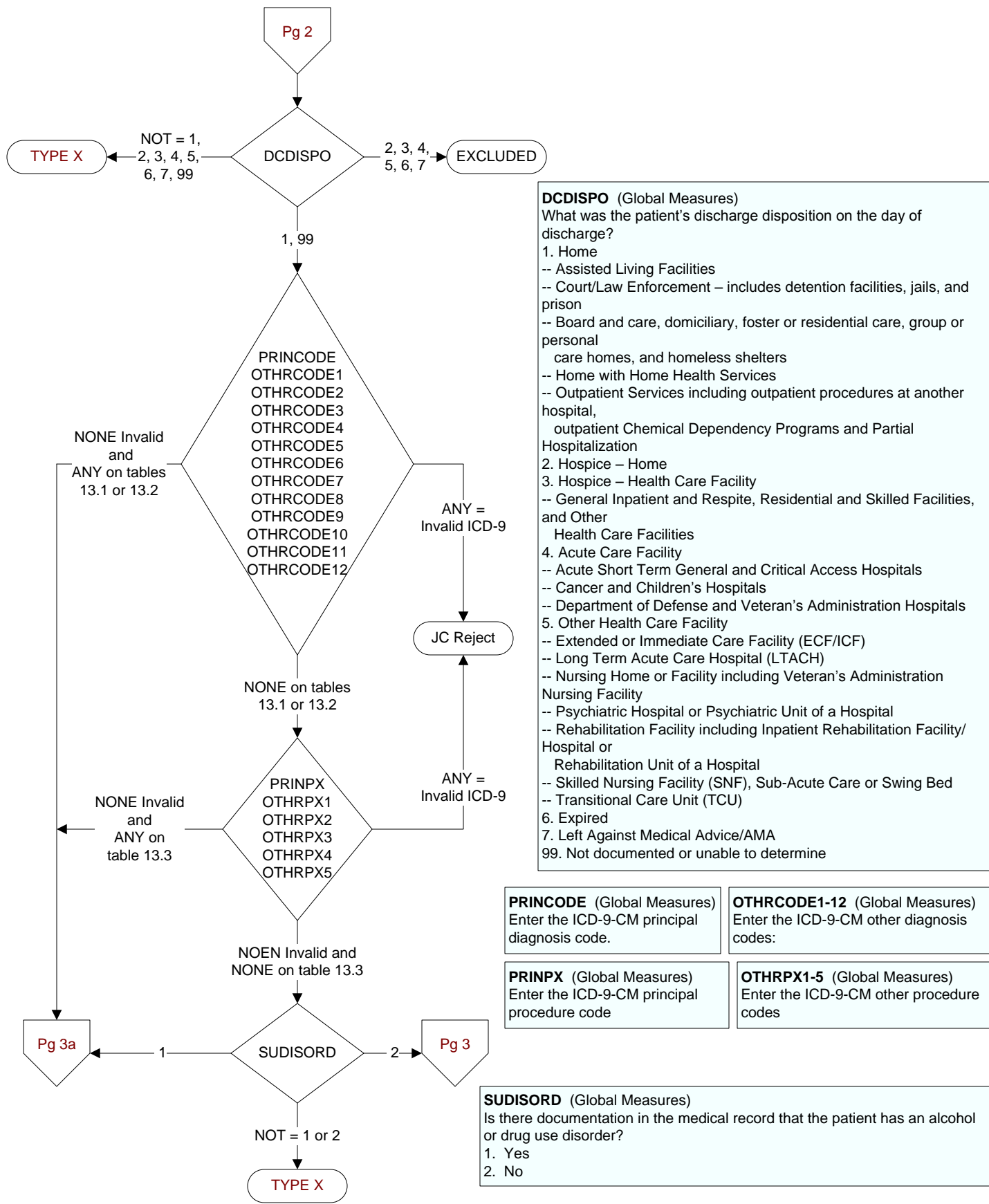
AGE (Calculated)

ADMDT - BIRTHDT

COGIMP (Global Measures)

Is there documentation in the medical record that indicates the patient is cognitively impaired?

1. Yes
2. No



SUBAC (Global Measures)

Did the record document a blood alcohol test indicative of acute intoxication during this hospitalization?

1. Yes
2. No

SUBUSE (Global Measures)

Was the patient screened for alcohol use during this hospital stay?

1. Yes
 2. No
98. Patient refused screening for alcohol use

SUBRESULT (Global Measures)

What results from the alcohol use screening were documented?

3. Score indicates no or low risk of alcohol related problems
 4. Score indicates unhealthy alcohol use (moderate risk) benefiting from brief intervention
99. Results not documented or unable to determine

FOLOSUBDT (Global Measures)

Enter the date the follow-up contact was made with the patient to assess substance use post discharge.

FOLOSUB (Global Measures)

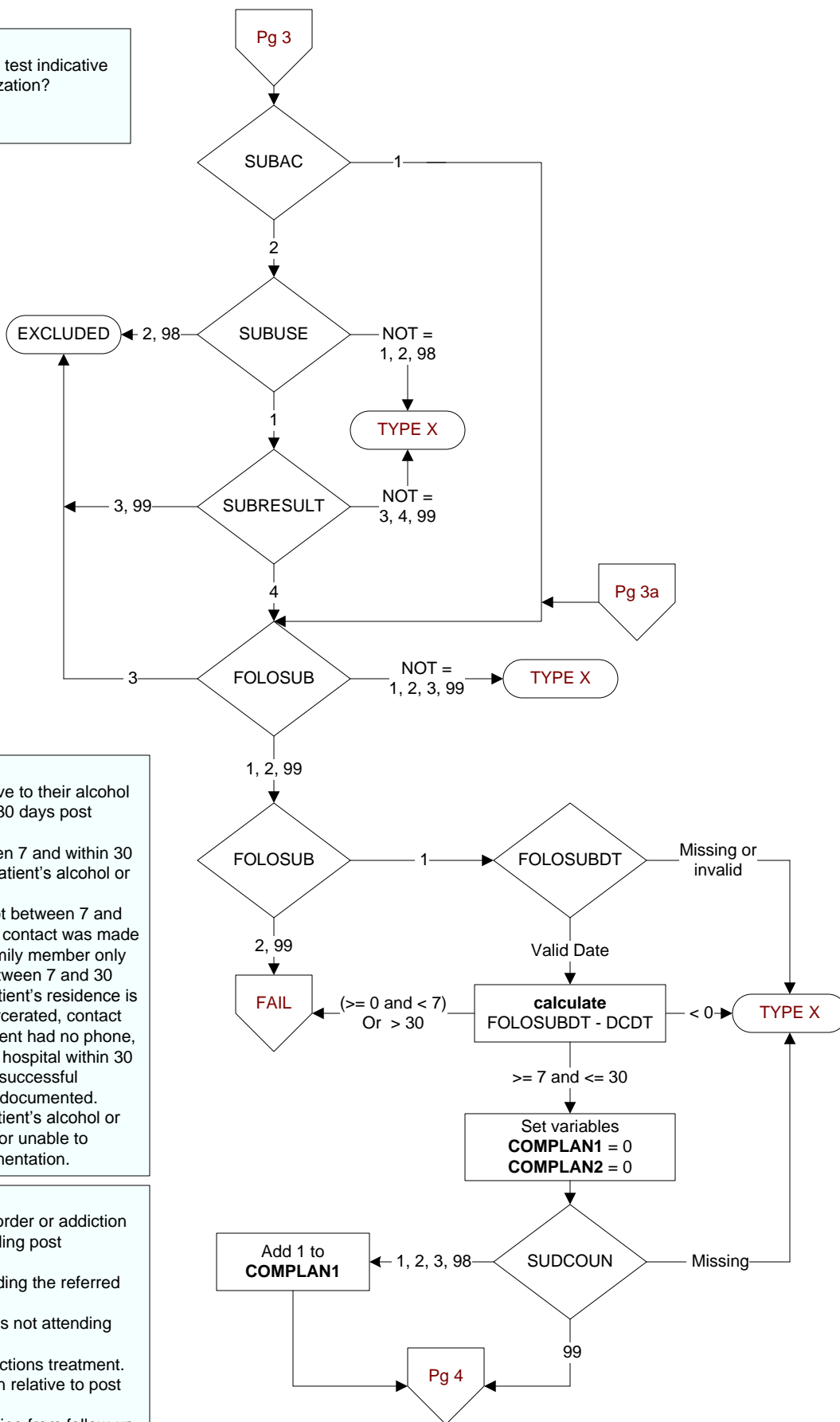
Was contact made with the patient relative to their alcohol or other drug use status between 7 and 30 days post discharge?

1. A follow-up contact was made between 7 and within 30 days post discharge relative to the patient's alcohol or other drug use status.
 2. A follow-up contact was made, but not between 7 and 30 days post discharge, or follow-up contact was made during specified timeframe with a family member only
 3. A follow-up contact was not made between 7 and 30 days post discharge because the patient's residence is not in the USA, the patient was incarcerated, contact number was no longer valid, the patient had no phone, or the patient was re-admitted to the hospital within 30 days post discharge, or at least 6 unsuccessful attempts to contact the patient were documented.
99. A follow-up contact relative to the patient's alcohol or was other drug use status not made or unable to determine from medical record documentation.

SUDCOUN (Global Measures)

Is the patient with an alcohol or drug disorder or addiction attending the referred addictions counseling post discharge?

1. The patient was referred and is attending the referred addictions treatment.
 2. The patient was referred and patient is not attending addictions treatment.
 3. The patient was NOT referred to addictions treatment.
98. Patient refused to provide information relative to post discharge counseling attendance.
99. Not documented or unable to determine from follow-up information collected.



SUDCMED (Global Measures)

Is the patient with an alcohol or drug disorder or addiction taking the prescribed medication post discharge?

1. The patient was given a prescription and is taking medication post discharge for an alcohol or drug use disorder as prescribed.
2. The patient was given a prescription and is not taking medication post discharge for an alcohol or drug use disorder as prescribed.
3. The patient was NOT given a prescription for medication to treat an alcohol or drug use disorder.
98. Patient refused to provide information relative to post discharge medication use.
99. Not documented or unable to determine from follow-up information collected.

ALCDCQUIT (Global Measures)

What is the status of the patient's alcohol use at the time of the post discharge follow-up contact?

1. The patient has quit or reduced their alcohol intake.
2. The patient has not quit or reduced their alcohol intake.
3. Not applicable, the patient does not use or does not have unhealthy alcohol use.
98. The patient refused to provide information relative to alcohol use status at the follow up contact.
99. Not documented or unable to determine from follow-up information collected.

SUDCQUIT (Global Measures)

What is the status of the patient's drug use at the time of the post discharge follow-up contact?

1. The patient has quit using drugs.
2. The patient has not quit using drugs.
3. Not applicable, the patient does not use drugs.
98. The patient refused to provide information relative to drug use status at the follow up contact.
99. Not documented or unable to determine from follow-up information collected.

