**REVSTAT**

REVIEW STATUS (calculated)

- 0. Abstraction has not begun
- 1. Abstraction in progress
- 2. Abstraction completed w/o errors
- 3. TVG failure (exclusion)
- 4. Record contains missing required answers (error record)
- 5. Administrative Exclusion

**DCDT** (Global Measures)

Discharge date (rcvd on pull list and may not be modified)

**ADMDT** (Global Measures)

Admission date:

**BIRTHDT** (Global Measures)

Patient date of birth

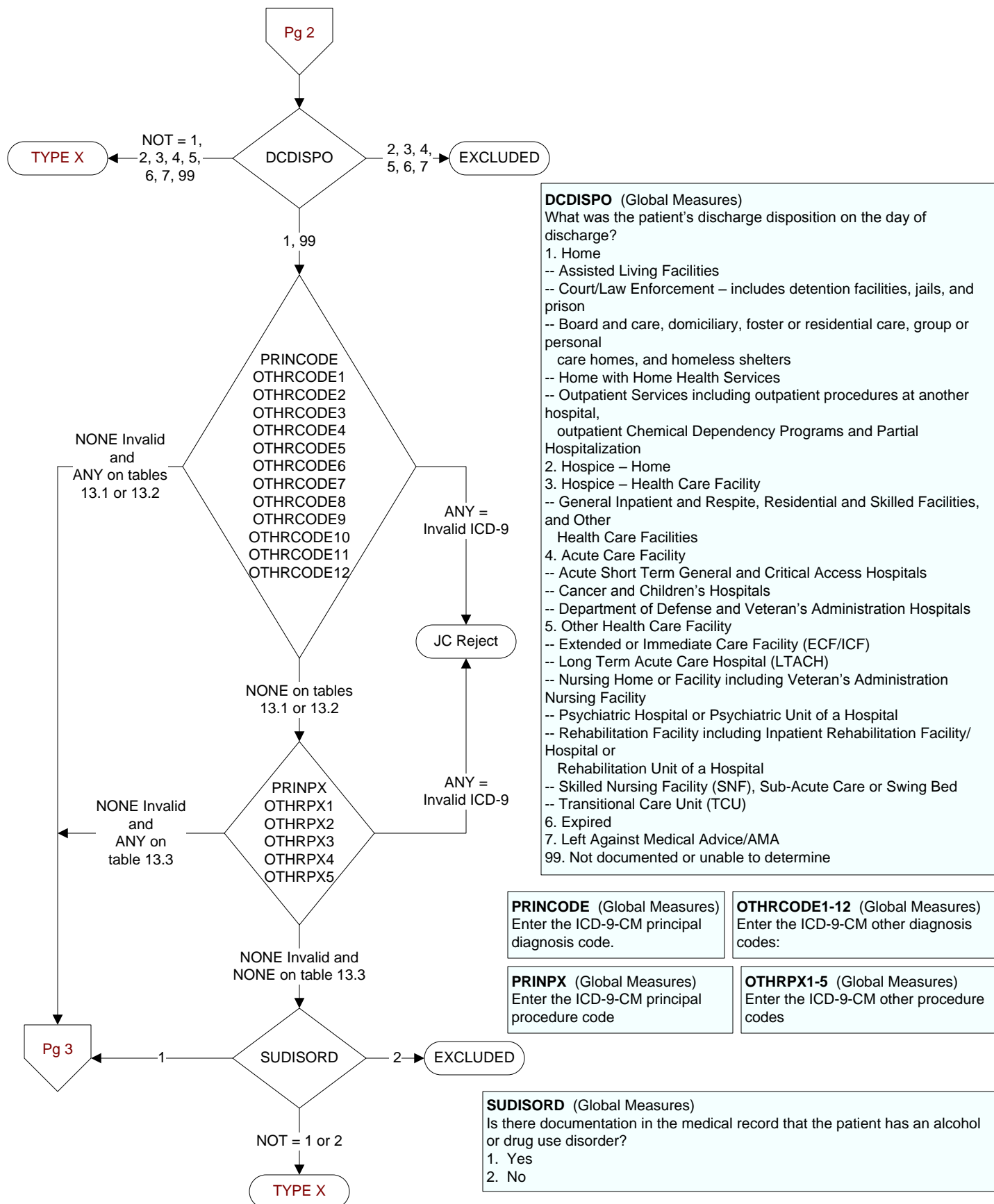
**AGE** (Calculated)

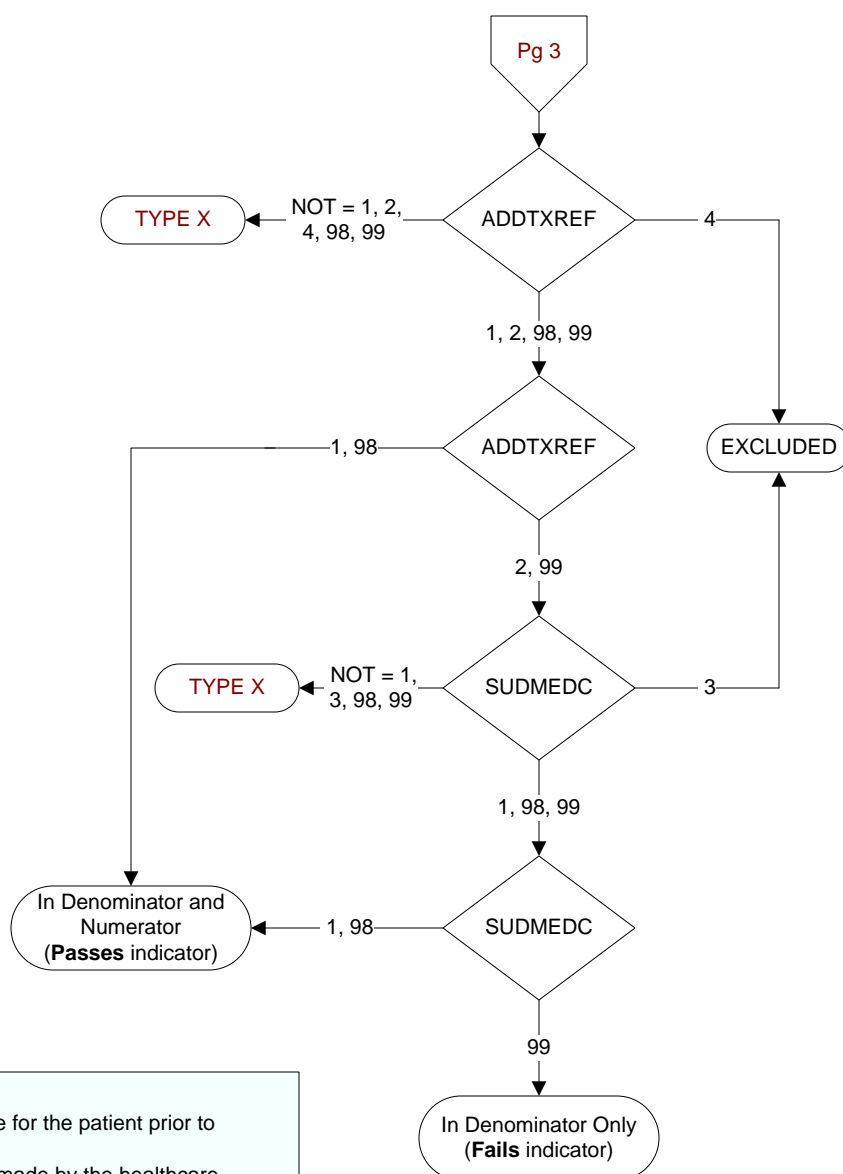
ADMDT - BIRTHDT

**COGIMP** (Global Measures)

Is there documentation in the medical record that indicates the patient is cognitively impaired?

- 1. Yes
- 2. No



**ADDTXREF** (Global Measures)

Was a referral for addictions treatment made for the patient prior to discharge?

1. The referral to addictions treatment was made by the healthcare provider prior to discharge.
2. Referral information was given to the patient at discharge but the appointment was not made by the provider prior to discharge.
4. The referral for addictions treatment was not offered because the patient's residence is not in the USA.
98. The patient refused the referral for addictions treatment and the referral was not made.
99. The referral for addictions treatment was not offered at discharge or unable to determine from the medical record documentation.

**SUDMEDC** (Global Measures)

Was one of the FDA-approved medications for alcohol or drug disorder prescribed at discharge?

1. A prescription for an FDA-approved medication for alcohol or drug disorder was given to the patient at discharge.
3. A prescription for an FDA-approved medication for alcohol or drug disorder was not offered at discharge because the patient's residence is not in the USA.
98. A prescription for an FDA-approved medication for alcohol or drug disorder was offered at discharge and the patient refused.
99. A prescription for an FDA-approved medication for alcohol or drug disorder was not offered at discharge, or unable to determine from medical record documentation.