

CATNUM

Sample category

16. AMI - Outpatient visit	54. Frail/Elderly
36. SCI Dx	60. DM Outpatient
48. Female, age 20-69	61. Inpatient SCI
50. Random Sample	68. Contract CBOC
51. Random Sample MH	

REVSTAT

REVIEW STATUS (not abstracted)

0. Abstraction has not begun
 1. Abstraction in progress
 2. Abstraction completed w/o errors
 3. TVG failure (exclusion)
 4. Record contains missing required answers (error record)
 5. Administrative exclusion from all measures

DOCHOSPCE (PI module)

Is one of the following documented in the medical record:

- the patient is enrolled in a VHA or community-based Hospice program
- the patient has a diagnosis of cancer of the liver, pancreas, or esophagus
- on the problem list it is documented the patient's life expectancy is less than 6 months?

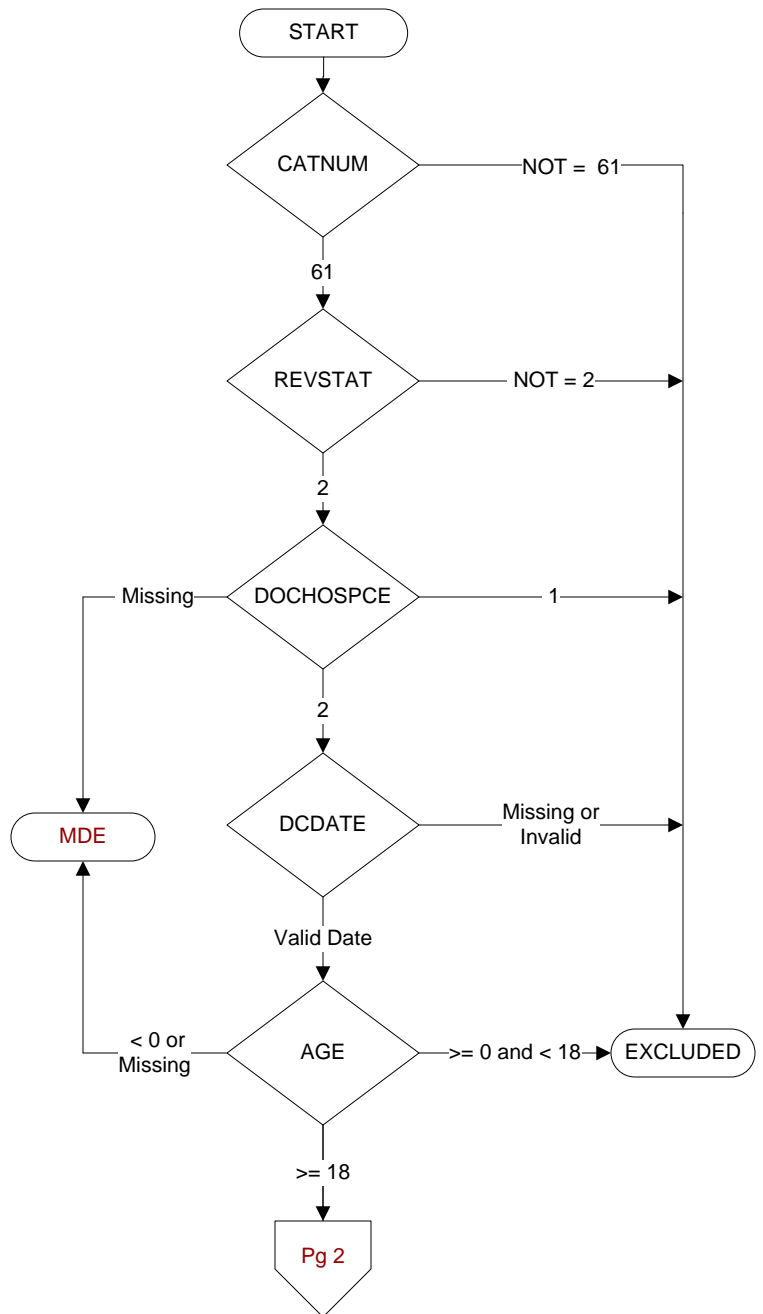
DCDATE (Validation)

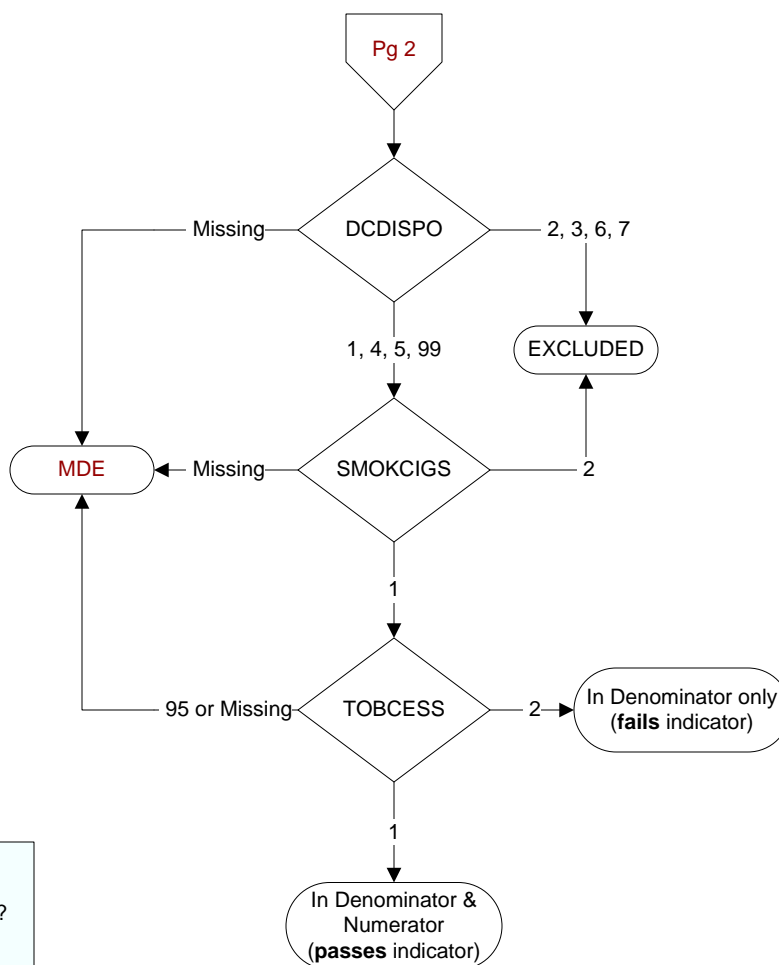
Enter the date of discharge.

AGE (Calculated field)

NEXUSDT - BIRTHDT (clinic visit date - date of birth)
 or
 If CATNUM = 61 and no NEXUS visit then ADMDT - BIRTHDT

**MDE = Missing or
Invalid Data Exclusion
(data error)**



**SMOKCIGS** (PI Module)

Did the adult patient smoke cigarettes any time during the year prior to hospital arrival?

1. Yes
2. No or unable to determine from medical record documentation

TOBCESS (PI Module)

Did the patient/caregiver receive smoking/tobacco use cessation advice or counseling during the hospitalization?

1. Yes
2. No
95. Not applicable

DCDISPO (Validation)

What was the patient's discharge disposition on the day of discharge?

1. Home
 - Assisted Living Facilities (ALFs) – includes assisted living care at nursing home/facility
 - Court/Law Enforcement – includes detention facilities, jails, and prison
 - Home – includes board and care, domiciliary, foster or residential care, group or personal care homes, retirement communities, and homeless shelters
 - Home with Home Health Services
 - Outpatient Services including outpatient procedures at another hospital, outpatient Chemical Dependency Programs and Partial Hospitalization
2. Hospice – Home (or other home setting as listed in #1 above)
3. Hospice – Health Care Facility
 - General Inpatient and Respite, Residential and Skilled Facilities, and Other Health Care Facilities
4. Acute Care Facility
 - Acute Short Term General and Critical Access Hospitals
 - Cancer and Children's Hospitals
 - Department of Defense and Veteran's Administration Hospitals
5. Other Health Care Facility
 - Extended or Immediate Care Facility (ECF/ICF)
 - Long Term Acute Care Hospital (LTACH)
 - Nursing Home or Facility including Veteran's Administration Nursing Facility
 - Psychiatric Hospital or Psychiatric Unit of a Hospital
 - Rehabilitation Facility including Inpatient Rehabilitation Facility/Hospital or Rehabilitation Unit of a Hospital
 - Skilled Nursing Facility (SNF), Sub-Acute Care or Swing Bed
 - Transitional Care Unit (TCU)
6. Expired
7. Left Against Medical Advice/AMA
99. Not documented or unable to determine