

**REVSTAT**

REVIEW STATUS (not abstracted)

0. Abstraction has not begun
1. Abstraction in progress
2. Abstraction completed w/o errors
3. TVG failure (exclusion)
4. Record contains missing required answers (error record)
5. Administrative exclusion from all measures

**DTOFDC (IHF)**

Discharge date: (rcv'd on pull list and may not be modified)

**PRINCODE (IHF)**

Enter the ICD-9-CM principal diagnosis code.

**ENTRADM (IHF)**

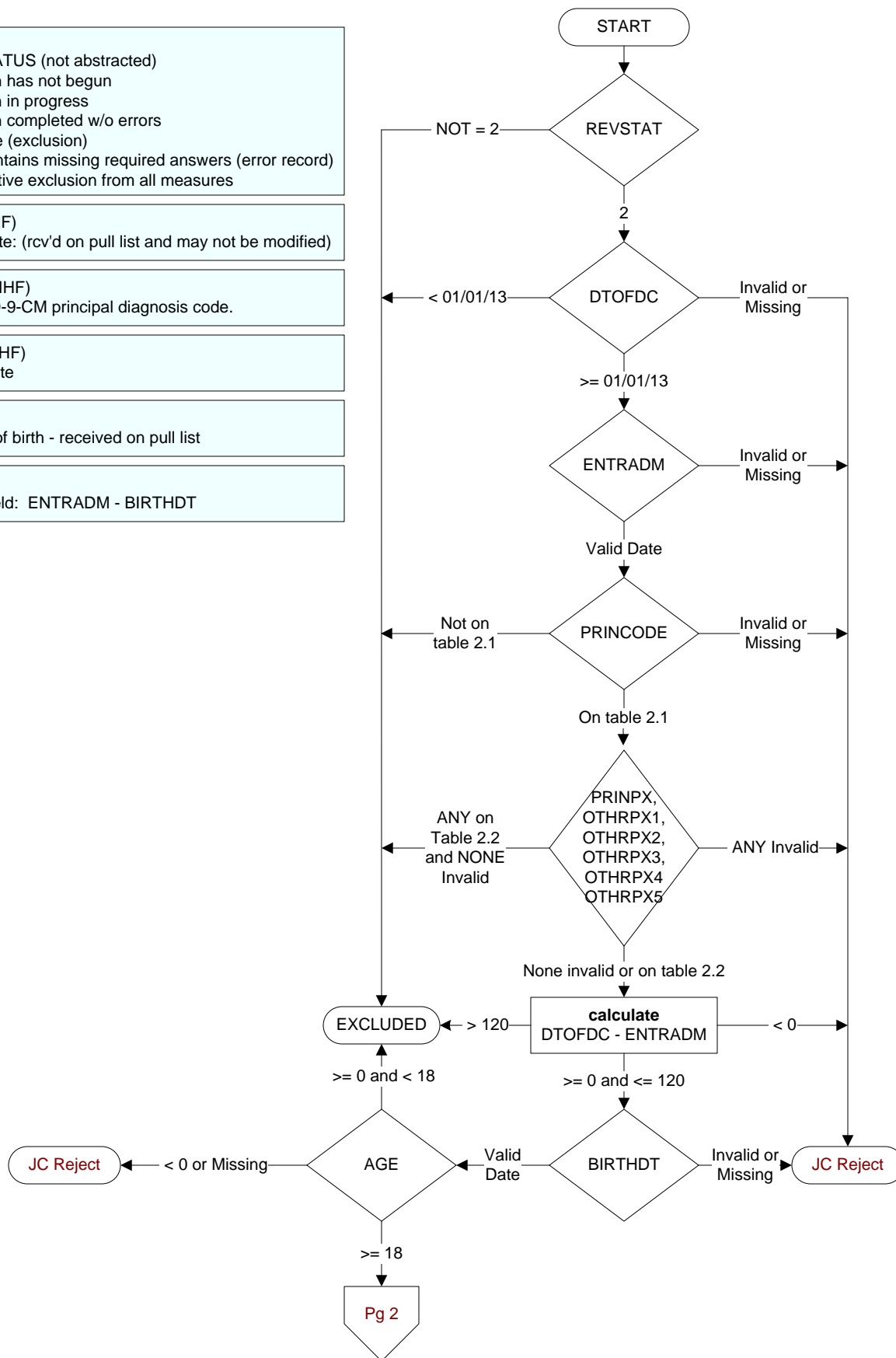
Admission date

**BIRTHDT**

Patient date of birth - received on pull list

**AGE**

Calculated field: ENTRADM - BIRTHDT



**CLNTRIAL (IHF)**

During this hospital stay, was the patient enrolled in a clinical trial in which patients with heart failure were being studied?

1. Yes
2. No

**COMFORT (IHF)**

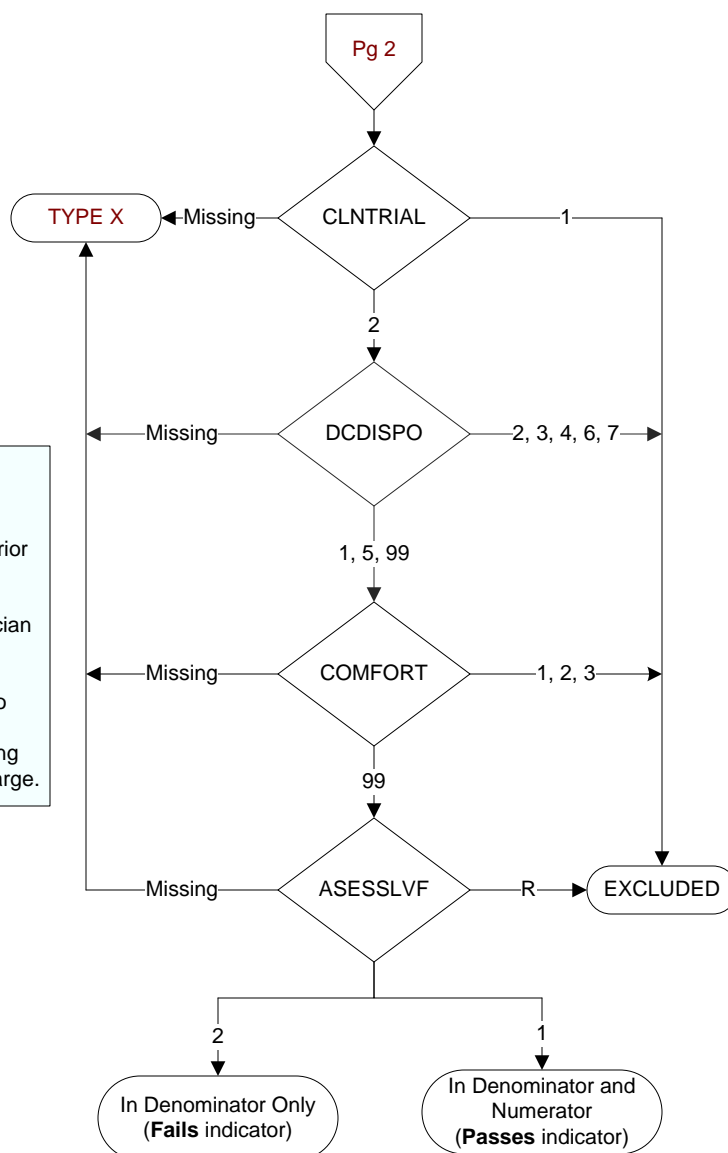
When is the earliest physician, APN, or PA documentation of comfort measures only?

1. Day of arrival (day 0) or day after arrival (day 1)
2. Two or more days after arrival (day 2 or greater)
3. Comfort measures only documented during hospital stay, but timing unclear
99. Comfort measures only was not documented by the physician/APN/PA or unable to determine

**ASSESSLVF (IHF)**

Is there documentation in the medical record of at least one of the following:

- Left ventricular systolic function (LVSF) assessment at any time prior to arrival or during this hospitalization
  - A plan for LVSF assessment after discharge
  - A reason documented by a physician, nurse practitioner, or physician assistant for not assessing LVSF
1. Yes
  2. No assessment at any time, no plan to assess after discharge, no reason documented, or unable to determine
  - R. Reason documented by a physician, APN, or PA for not assessing LVSF prior to arrival, during hospital stay, or planned after discharge.

**DCDISPO (IHF)**

What was the patient's discharge disposition on the day of discharge?

1. Home
  - Assisted Living Facilities (ALFs) - includes assisted living care at nursing home facility
  - Court/Law Enforcement – includes detention facilities, jails, and prison
  - Home - includes board and care, domiciliary, foster or residential care, group or personal care homes, retirement communities, and homeless shelters
  - Home with Home Health Services
  - Outpatient Services including outpatient procedures at another hospital, outpatient Chemical Dependency Programs and Partial Hospitalization
2. Hospice – Home (or other home settings as listed in #1 above)
3. Hospice – Health Care Facility
  - General Inpatient and Respite, Residential and Skilled Facilities, and Other Health Care Facilities
4. Acute Care Facility
  - Acute Short Term General and Critical Access Hospitals
  - Cancer and Children's Hospitals
  - Department of Defense and Veteran's Administration Hospitals
5. Other Health Care Facility
  - Extended or Immediate Care Facility (ECF/ICF)
  - Long Term Acute Care Hospital (LTACH)
  - Nursing Home or Facility including Veteran's Administration Nursing Facility
  - Psychiatric Hospital or Psychiatric Unit of a Hospital
  - Rehabilitation Facility including Inpatient Rehabilitation Facility/Hospital or Rehabilitation Unit of a Hospital
  - Skilled Nursing Facility (SNF), Sub-Acute Care or Swing Bed
  - Transitional Care Unit (TCU)
6. Expired
7. Left Against Medical Advice/AMA
99. Not documented or unable to determine