

REVSTAT

REVIEW STATUS (not abstracted)

- 0. Abstraction has not begun
- 1. Abstraction in progress
- 2. Abstraction completed w/o errors
- 3. TVG failure (exclusion)
- 4. Record contains missing required answers (error record)
- 5. Administrative exclusion from all measures

DCDT (Validation)

Discharge date.

ADMDT (Validation)

Admission date:

EDPT (Validation)

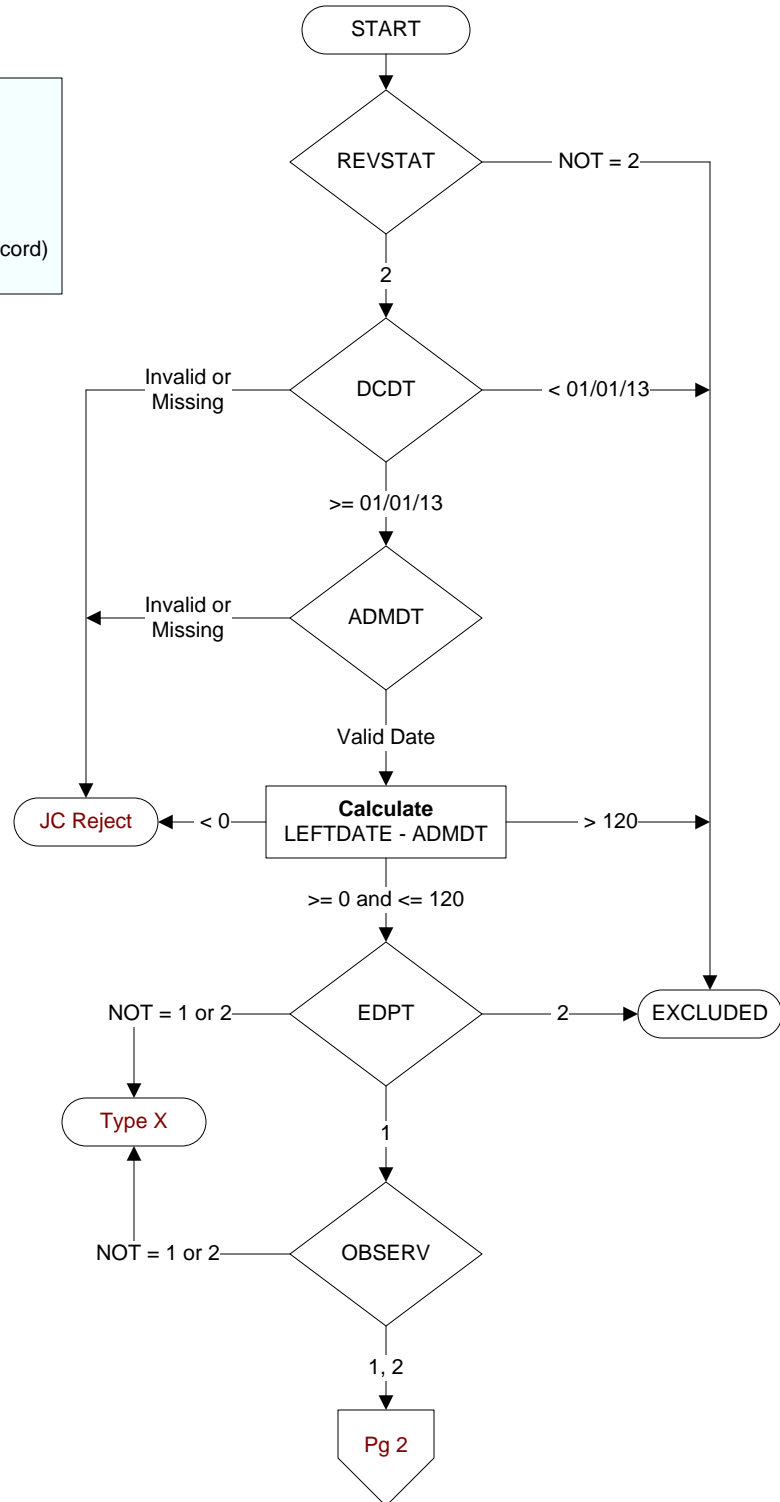
Did the patient receive care/services in the Emergency Department of this VAMC?

- 1. Yes
- 2. No

OBSERV (Validation)

Was there documentation of an order for observation services written by the physician/ APN/PA at this VAMC?

- 1. Yes
- 2. No
- 95. Not applicable



ARRVDATE (Validation) Enter the <u>earliest</u> documented date the patient arrived at acute care at this VAMC.
ARRVTIME (Validation) Enter the <u>earliest</u> documented time the patient arrived at acute care at this VAMC.
EDCDT (Validation) Enter the date the patient departed from the emergency room.
EDCTM (Validation) Enter the time the patient departed from the emergency room.
PRINCODE (Global Measures) Enter the ICD-9-CM principal diagnosis code.

