**REVSTAT**

REVIEW STATUS (calculated)

- 0. Abstraction has not begun
- 1. Abstraction in progress
- 2. Abstraction completed w/o errors
- 3. TVG failure (exclusion)
- 4. Record contains missing required answers (error record)
- 5. Administrative Exclusion

DCDT (Global Measures)

Discharge date (rcvd on pull list and may not be modified)

ADMDT (Global Measures)

Admission date:

BIRTHDT (Global Measures)

Patient date of birth

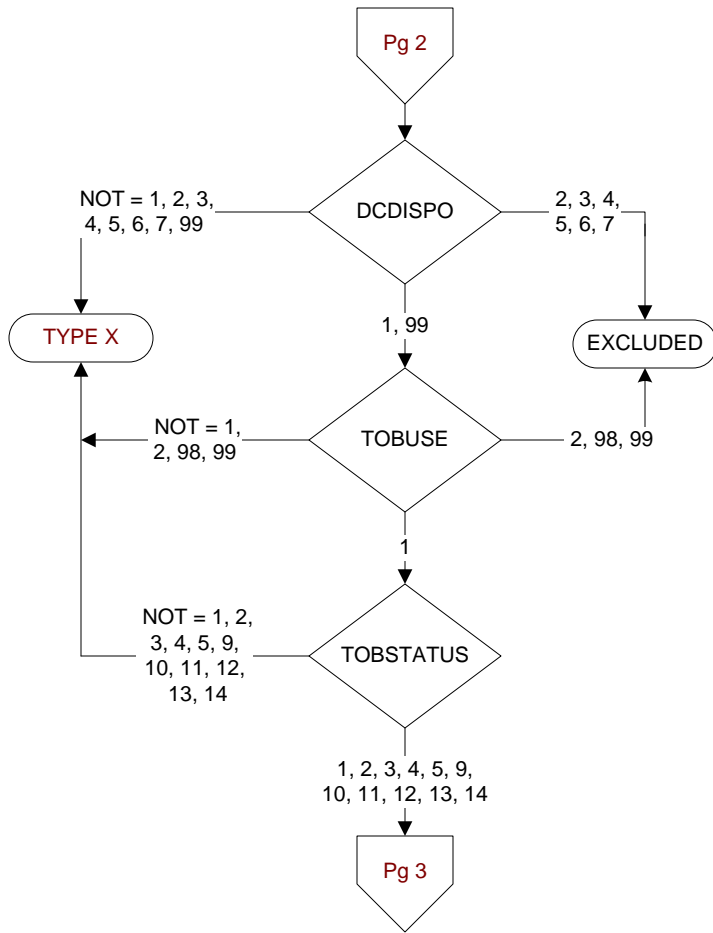
AGE (Calculated)

ADMDT - BIRTHDT

COGIMP (Global Measures)

Is there documentation in the medical record that indicates the patient is cognitively impaired?

- 1. Yes
- 2. No

**TOBUSE (Global Measures)**

Is there documentation the patient used any form of tobacco during the past 30 days?

1. Yes, patient has used tobacco during the past 30 days
2. No, patient has not used tobacco during past 30 days
98. Patient refused tobacco use screen
99. The patient was not screened for tobacco use during this hospitalization or unable to determine the patient's tobacco use status from medical record documentation.

TOBSTATUS (Global Measures)

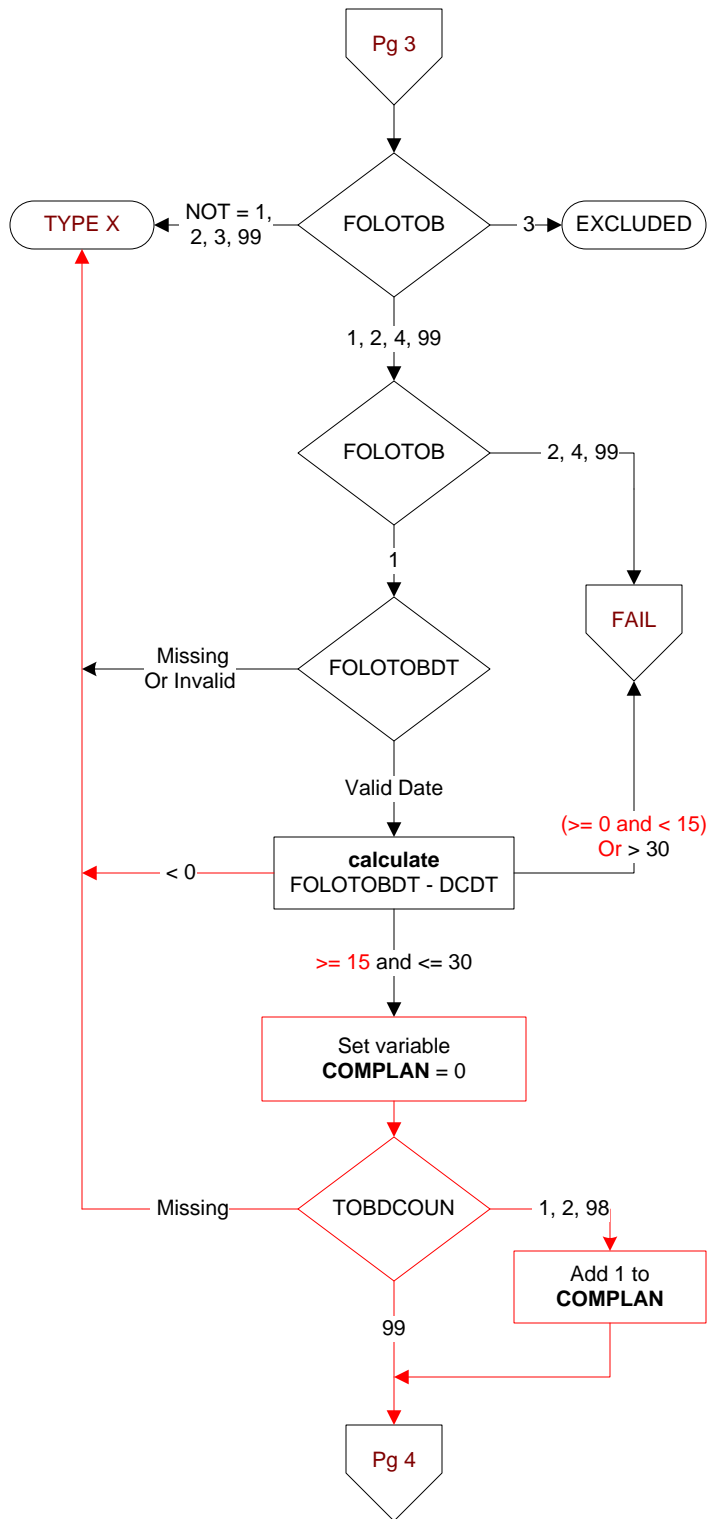
What is the patient's tobacco use status?

1. Has smoked cigarettes on average in a volume of more than five cigarettes per day during the past 30 days.
2. Has smoked cigarettes on average in a volume of five or less cigarettes per day during the past 30 days.
3. Smokes cigarettes but does not smoke daily.
4. Has used smokeless tobacco products in the past 30 days.
9. Has smoked a pipe or cigar daily in the past 30 days.
10. Has smoked cigarettes on average in a volume of more than five cigarettes per day during the past 30 days and has used smokeless tobacco products in the past 30 days.
11. Has smoked cigarettes on average in a volume of more than five cigarettes per day during the past 30 days, has used smokeless tobacco products in the past 30 days, and has smoked a pipe or cigars daily in the past 30 days
12. Has smoked cigarettes on average in a volume of five or less cigarettes per day during the past 30 days and has used smokeless tobacco products in the past 30 days.
13. Has smoked cigarettes on average in a volume of five or less cigarettes per day during the past 30 days and has smoked a pipe or cigars daily in the past 30 days, and has used smokeless tobacco products in the past 30 days.
14. Has smoked cigarettes on average in a volume of five or less cigarettes per day during the past 30 days and has smoked a pipe or cigars daily in the past 30 days.

DCDISPO (Global Measures)

What was the patient's discharge disposition on the day of discharge?

1. Home
 - Assisted Living Facilities (ALFs) - includes assisted living care at nursing home/facility
 - Court/Law Enforcement – includes detention facilities, jails, and prison
 - Home – includes board and care, domiciliary, foster or residential care, group or personal care homes, retirement communities, and homeless shelters
 - Home with Home Health Services
 - Outpatient Services including outpatient procedures at another hospital, outpatient Chemical Dependency Programs and Partial Hospitalization
2. Hospice – Home (or other home setting as listed in #1 above)
3. Hospice – Health Care Facility
 - General Inpatient and Respite, Residential and Skilled Facilities, and Other Health Care Facilities
4. Acute Care Facility
 - Acute Short Term General and Critical Access Hospitals
 - Cancer and Children's Hospitals
 - Department of Defense and Veteran's Administration Hospitals
5. Other Health Care Facility
 - Extended or Immediate Care Facility (ECF/ICF)
 - Long Term Acute Care Hospital (LTACH)
 - Nursing Home or Facility including Veteran's Administration Nursing Facility
 - Psychiatric Hospital or Psychiatric Unit of a Hospital
 - Rehabilitation Facility including Inpatient Rehabilitation Facility/Hospital or Rehabilitation Unit of a Hospital
 - Skilled Nursing Facility (SNF), Sub-Acute Care or Swing Bed
 - Transitional Care Unit (TCU)
6. Expired
7. Left Against Medical Advice/AMA
99. Not documented or unable to determine

**FOLOTOB** (Global Measures)

Was contact made with the patient relative to tobacco use status between 15 and 30 days post discharge?

1. A follow-up contact was made between 15 and 30 days post discharge relative to the patient's tobacco use status.
2. A follow-up contact relative to the patient's tobacco use status was made, but not between 15 and 30 days post discharge, or follow-up contact was made during specified timeframe with a family member
3. A follow-up contact was not made within 30 days post discharge because the patient's residence is not in the USA, the patient was incarcerated, contact number was no longer valid, the patient had no phone, or the patient was re-admitted to the hospital within 30 days post discharge, or at least 6 unsuccessful attempts to contact the patient were documented.
4. 30 days post discharge has not elapsed
99. A follow-up contact relative to the patient's tobacco use status was not made post discharge or unable to determine from medical record documentation.

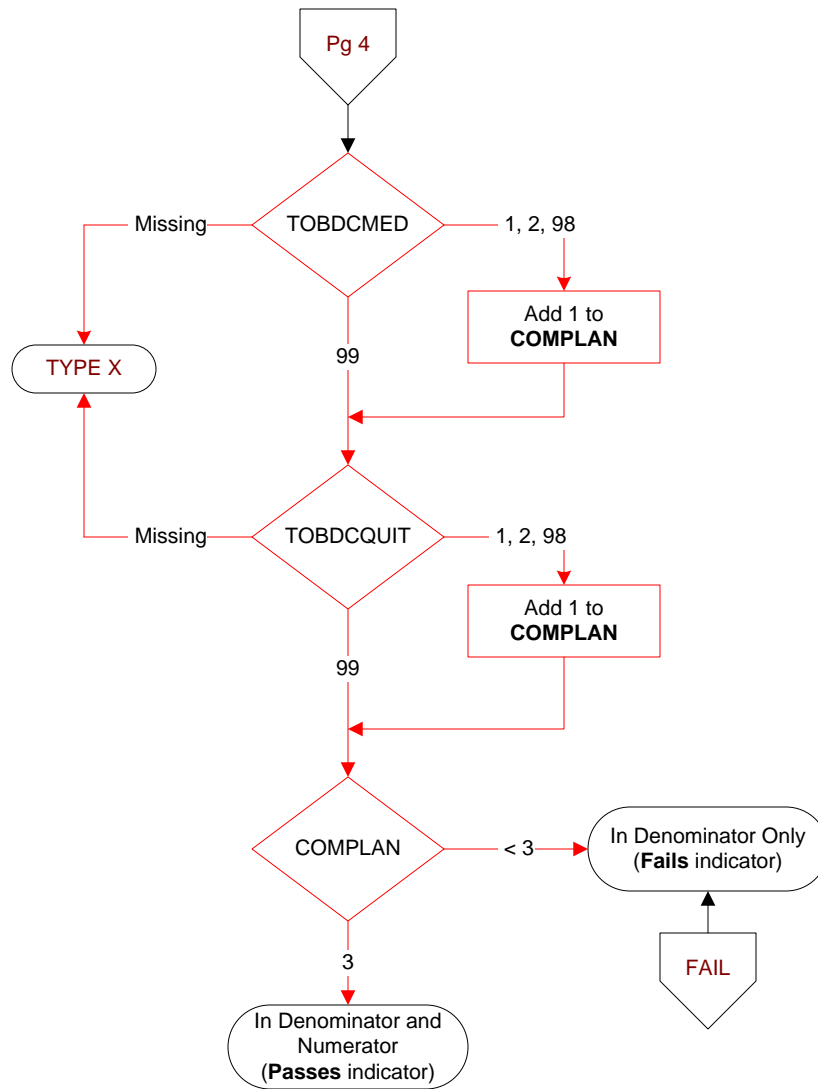
FOLOTOBDT (Global Measures)

Enter the date the follow-up contact was made with the patient to assess tobacco use post discharge.

TOBDCOUN (Global Measures)

Is the patient attending outpatient tobacco cessation counseling post discharge?

1. The patient is attending outpatient tobacco cessation counseling post discharge.
2. The patient is not attending outpatient tobacco cessation counseling post discharge.
98. Patient refused to provide information relative to post discharge counseling attendance.
99. Not documented or unable to determine from follow-up information.

**TOBDCMED** (Global Measures)

Is the patient taking the recommend tobacco cessation medication post discharge?

1. The patient is taking the recommended tobacco cessation medication post discharge.
2. The patient is not taking the recommended tobacco cessation medication post discharge.
98. Patient refused to provide information relative to tobacco cessation medication use post discharge.
99. Not documented or unable to determine from follow-up information.

TOBDCQUIT (Global Measures)

Has the patient quit using tobacco products post discharge?

1. The patient has quit using tobacco products post discharge
2. The patient has not quit using tobacco products post discharge.
98. Patient refused to provide information relative to tobacco use status at the follow-up contact.
99. Not documented or unable to determine from follow-up information collected.