

**CATNUM**

Sample category  
57. OEF/OIF scrnd TBI+

**REVSTAT**

REVIEW STATUS (not abstracted)

- 0. Abstraction has not begun
- 1. Abstraction in progress
- 2. Abstraction completed w/o errors
- 3. TVG failure (exclusion)
- 4. Record contains missing required answers (error record)
- 5. Administrative exclusion from all measures

**ACTDXTBI (TBI)**

Was there evidence in the record that the veteran had a pre-existing diagnosis of Traumatic Brain Injury prior to the TBI Screen?

- 1. Yes
- 2. No

**SCRNTBI (TBI)**

Was the patient screened for Traumatic Brain Injury?

- 1. Yes
- 2. No
- 98. Patient refused TBI screen

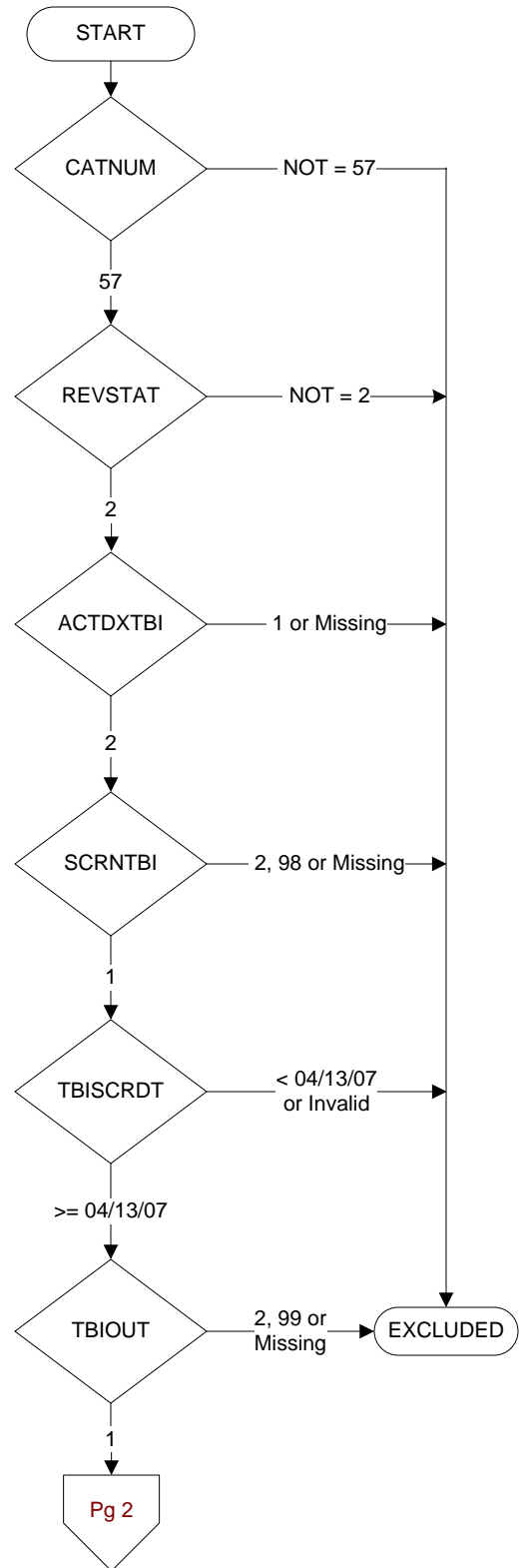
**TBISCRDT (TBI)**

Enter the date of the most recent screening for Traumatic Brain Injury.

**TBIOUT (TBI)**

What was the outcome of the screen documented in the medical record?

- 1. Positive
- 2. Negative
- 99. Outcome not documented



**FOLOTBI (TBI)**

Following the positive TBI screen, was a consult placed for a second level evaluation appointment?

1. Yes
2. No
98. Patient refused consult

**COM2EVAL (TBI)**

During the timeframe following the positive TBI screen up to and including the pull list date, does the record document a second level evaluation was completed by a licensed independent medical provider?

1. Yes
2. No

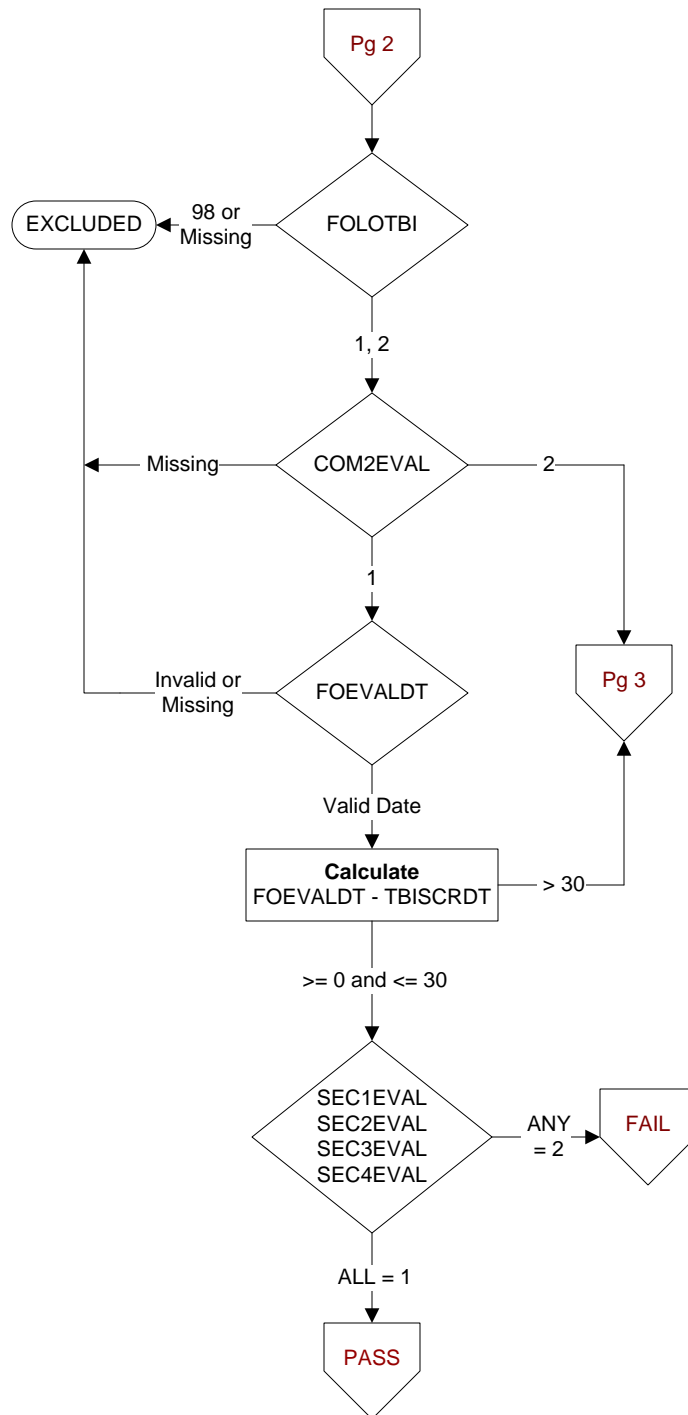
**FOEVALDT (TBI)**

Enter the earliest date of the second level evaluation completed following the positive TBI screen.

Is there documentation the second level evaluation included the following components? (TBI)

- SEC1EVAL** - Injury etiology (origin)
- SEC2EVAL** - Neurobehavioral Symptom Inventory (NSI)
- SEC3EVAL** - Targeted Physical Exam
- SEC4EVAL** - Treatment Plan

1. Yes
2. No



## REFUSEVL (TBI)

On the date of or within 14 days after the positive TBI screen, was there evidence in the medical record that the patient refused the second level evaluation?

1. Yes
2. No

**APPTLATR (TBI)**

Does the record document the patient requested an appointment greater than 30 days from the positive TBI screen date?

1. Yes
2. No
95. Not applicable

## SCHAPPT (TBI)

Was an appointment for the second level evaluation scheduled during the 30 days after the positive TBI screen?

1. Yes
2. No

**NOSHOW (TBI)**

Does the record document the patient was a no show for the second level evaluation appointment scheduled during the 30 days after the positive TBI screen?

1. Yes
2. No

## PTCANCEL (TBI)

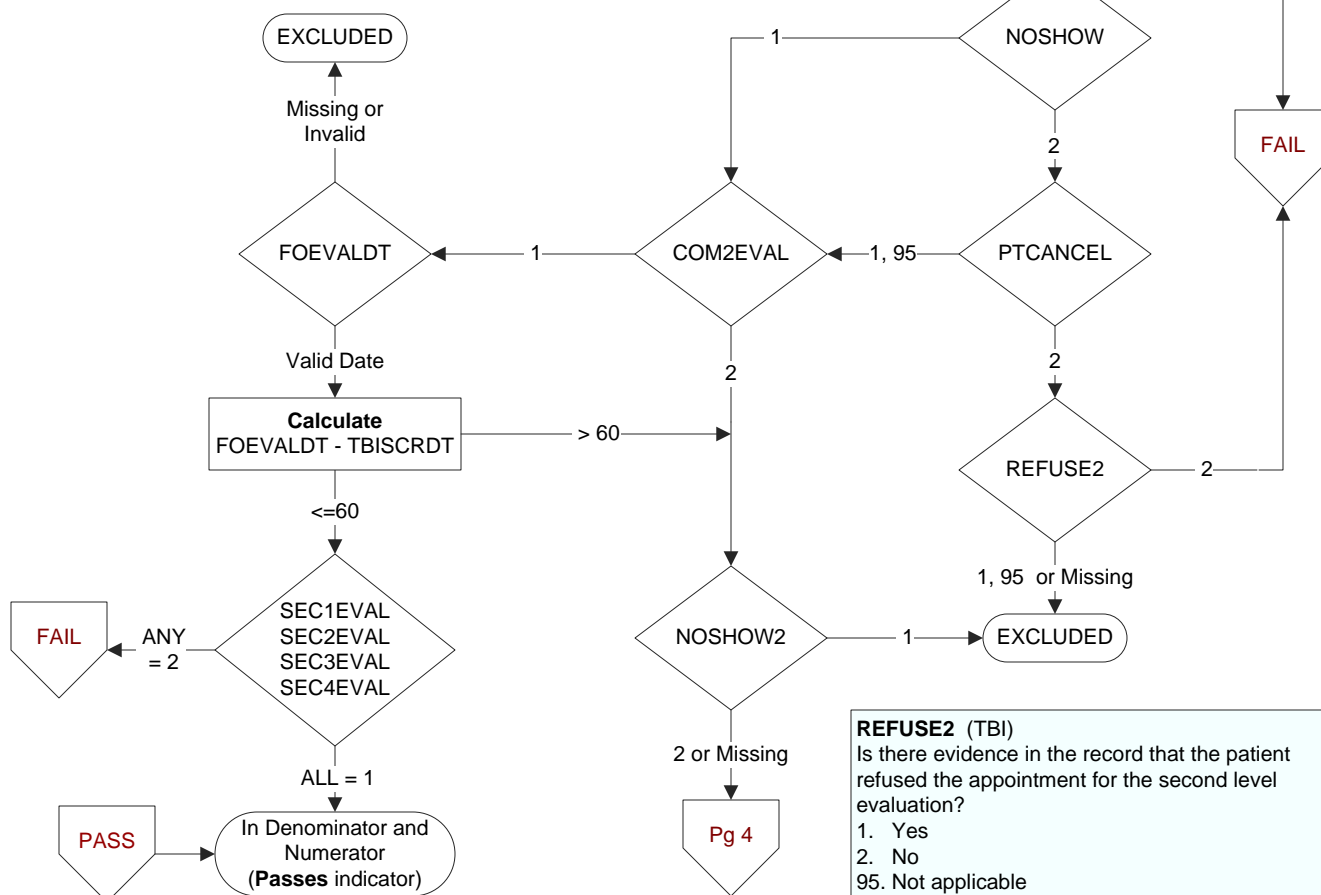
Does the record document the patient cancelled the second level evaluation appointment scheduled during the 30 days after the positive TBI screen?

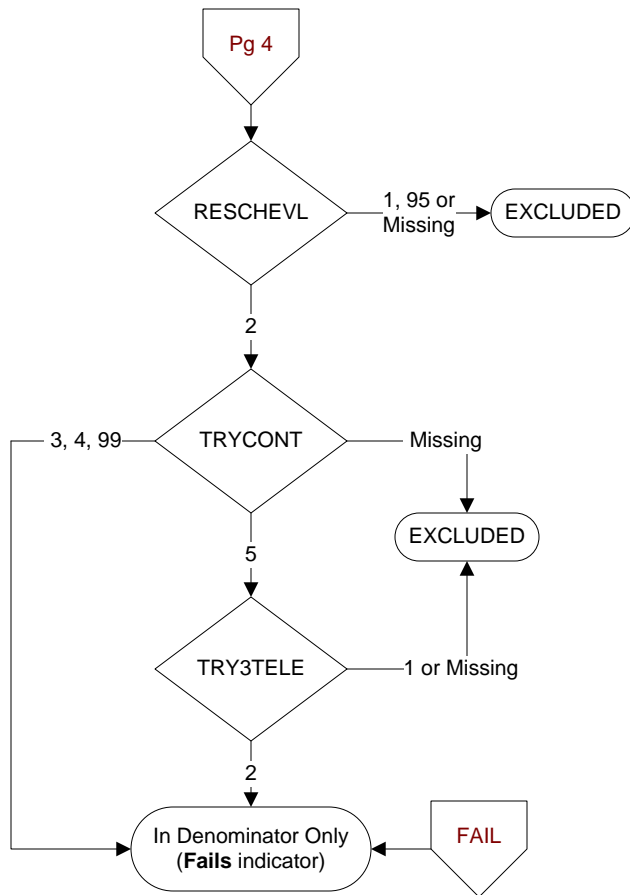
1. Yes
2. No

## NOSHOW2 (TBI)

Does the record document that patient did not show for the rescheduled second level evaluation appointment?

1. Yes
2. No
95. Not applicable



**RESCHEVL (TBI)**

On the date of or within 14 days after the patient was a no show or cancelled the initial second level evaluation appointment, does the record document that the facility successfully contacted the patient to reschedule the second level evaluation?

1. Yes
2. No
95. Not applicable

**TRYCONT (TBI)**

On the date of or within 14 days after the patient was a no show or cancelled the initial second level evaluation appointment, does the record document the facility attempted to contact the patient to reschedule the second level evaluation appointment?

3. Contact attempt by telephone
4. Contact attempt by certified letter
5. Both 3 and 4
99. None of the above

**TRY3TELE (TBI)**

On the date of or within the 14 days after the patient was a no show or cancelled the initial second level evaluation appointment, does the record document at least three telephone attempts to contact the patient to reschedule the second level evaluation appointment?

1. Yes
2. No