

REVSTAT

REVIEW STATUS (not abstracted)

0. Abstraction has not begun
1. Abstraction in progress
2. Abstraction completed w/o errors
3. TVG failure (exclusion)
4. Record contains missing required answers (error record)
5. Administrative exclusion from all measures

LEFTDATE (Validation)

Discharge date (received on pull list and may not be modified)

ADMDT (Validation)

Date of admission to acute inpatient care

BIRTHDT

Patient date of birth (received on pull list)

AGE

Calculated field: ADMDT - BIRTHDT

CXRCTABN (Validation)

Using the inclusion list, was any chest x-ray or CT scan obtained the day of or day prior to hospital arrival OR anytime during this hospital stay **abnormal**?

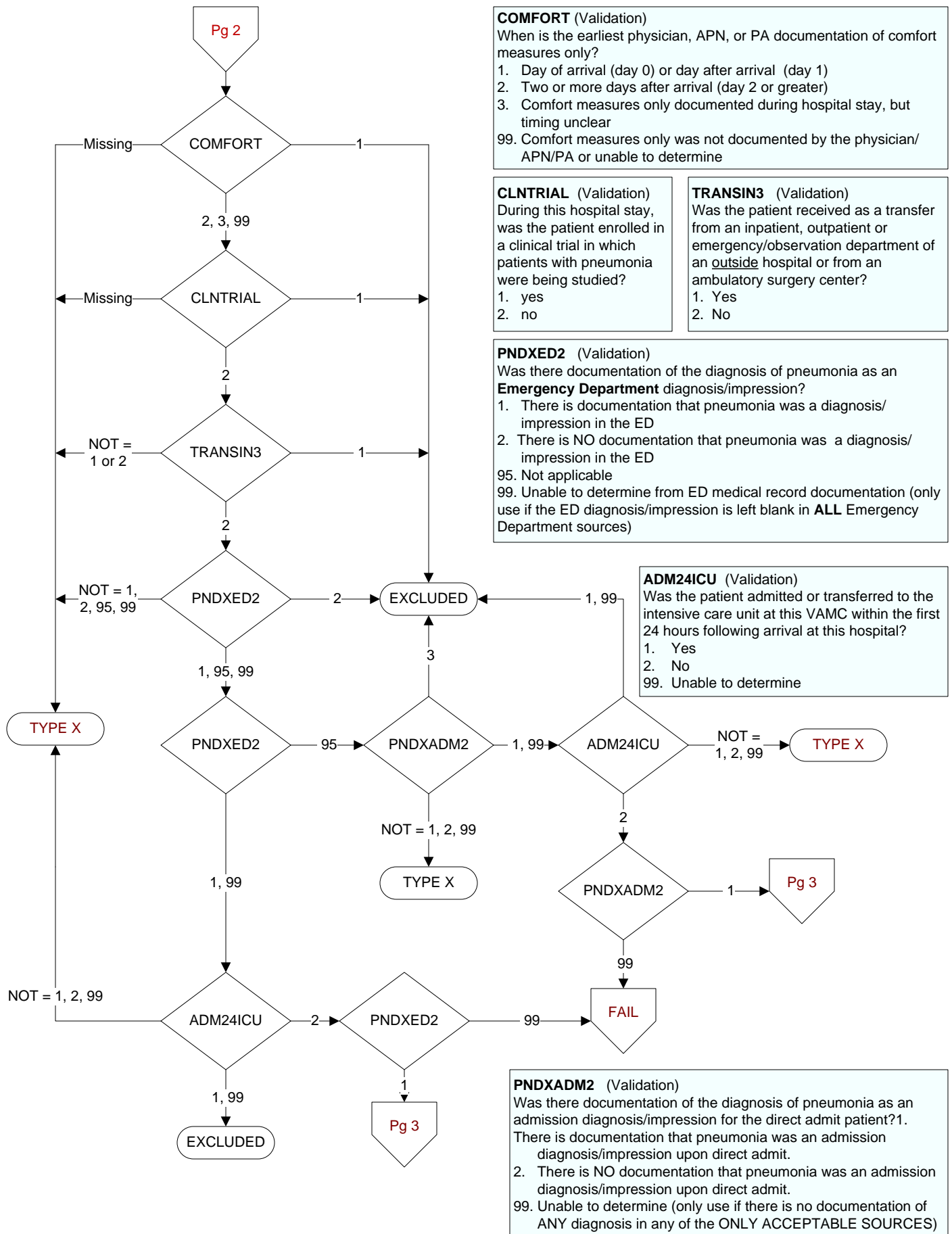
(SEE INCLUSION LIST)

1. Yes, a chest x-ray or CT scan done within the designated timeframe was abnormal (included ANY inclusion terms).
2. No, a chest x-ray/CT scan done within the designated timeframe was not abnormal (did not include ANY inclusion terms).
99. Unable to determine from medical record documentation if the chest x-ray or CT scan done during the designated timeframe was abnormal

CXRDONE (Validation)

Did the patient have a chest x-ray or CT scan on the day of or the day prior to hospital arrival OR anytime during this hospital stay?

1. Yes
2. No



ARRVDATE (Validation)

Enter the earliest documented date the patient arrived at acute care at this VAMC.

HELTRISK (Acute Care)

Is there documentation the patient had risk for healthcare associated pneumonia?

1. Yes
2. No

COMPCOND (Acute Care)

Is there documentation the patient had a compromising condition/therapy? (see definitions/decision rules for additional instruction)

No timeframe necessary:

- AIDS, AIDS related complex (ARC)
- HIV, HIV positive
- Any "Immunodeficiency Syndrome"
- Chronic Lymphocytic Leukemia (CLL)
- Congenital or hereditary Immunodeficiency
- Organ transplant

Within the last 3 months OR as diagnosed for the first time during this hospitalization:

- Leukemia
- Lymphocytic leukemia
- Lymphoma
- Marked or significant neutropenia
- Myelogenic leukemia
- Myeloma
- Myelodysplasia
- Pancytopenia/Systemic Chemotherapy
- Systemic Immunosuppressive Therapy

Within the last 3 months prior to this hospitalization:

- Systemic Corticosteroid/prednisone therapy
- Systemic Chemotherapy
- Systemic Immunosuppressive therapy
- Systemic Radiation therapy

1. Yes

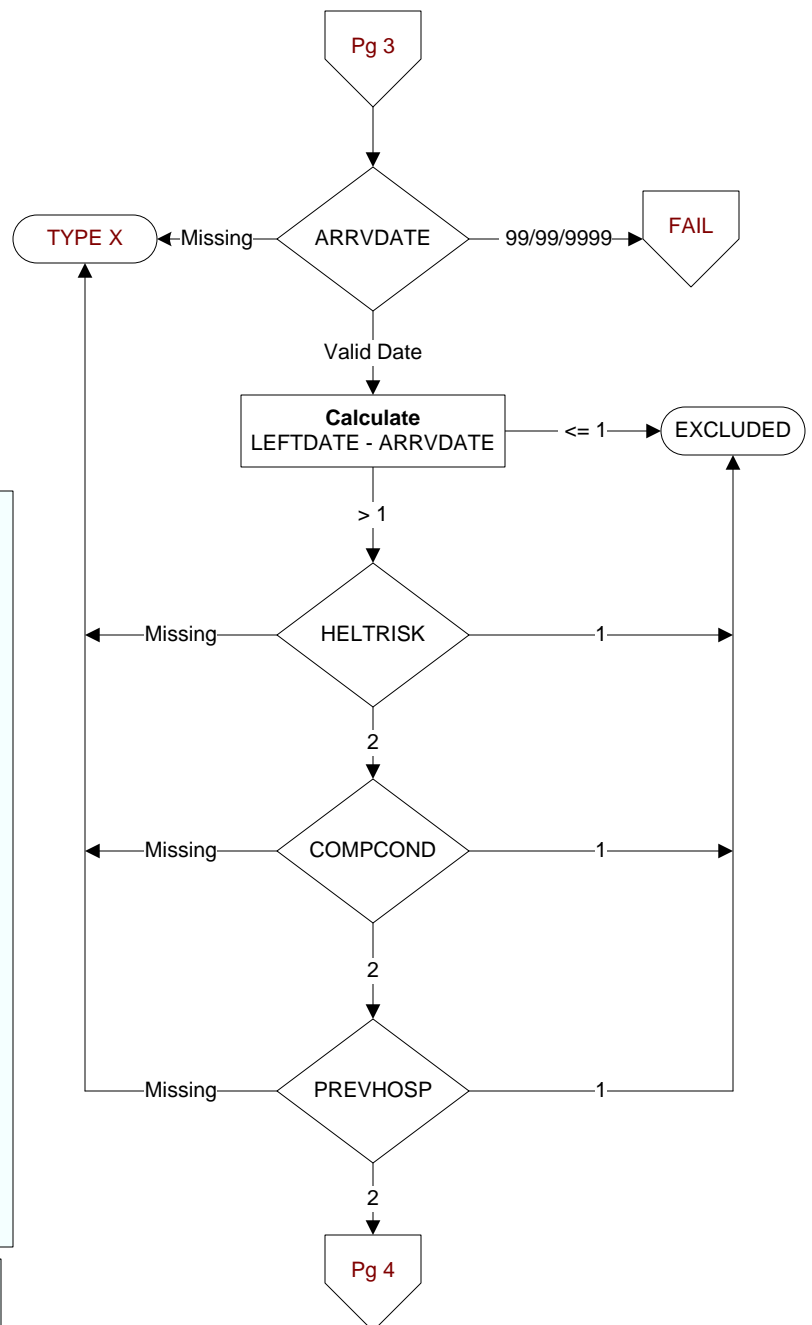
2. No or unable to determine

PREVHOSP (Acute Care)

Is there documentation the patient had an acute care hospitalization within 14 days prior to this episode of care?

1. Yes

2. No or unable to determine



ABRECVD (Acute Care)

Did the patient receive antibiotics via an appropriate route (PO, NG, PEG, IM, or IV)?

1. Antibiotic received only within 24 hours prior to arrival or the day prior to arrival and not during hospital stay
2. Antibiotic received within 24 hours prior to arrival or the day prior to arrival and during hospital stay
3. Antibiotic received only during hospital stay (not prior to arrival)
4. Antibiotic not received or unable to determine from medical record documentation

ANTINAME (Acute Care)

What was the name of the antibiotic dose (s) administered from hospital arrival through 24 hours after hospital arrival?

ROUTEADM (Acute Care)

Enter the route of administration of the antibiotic.

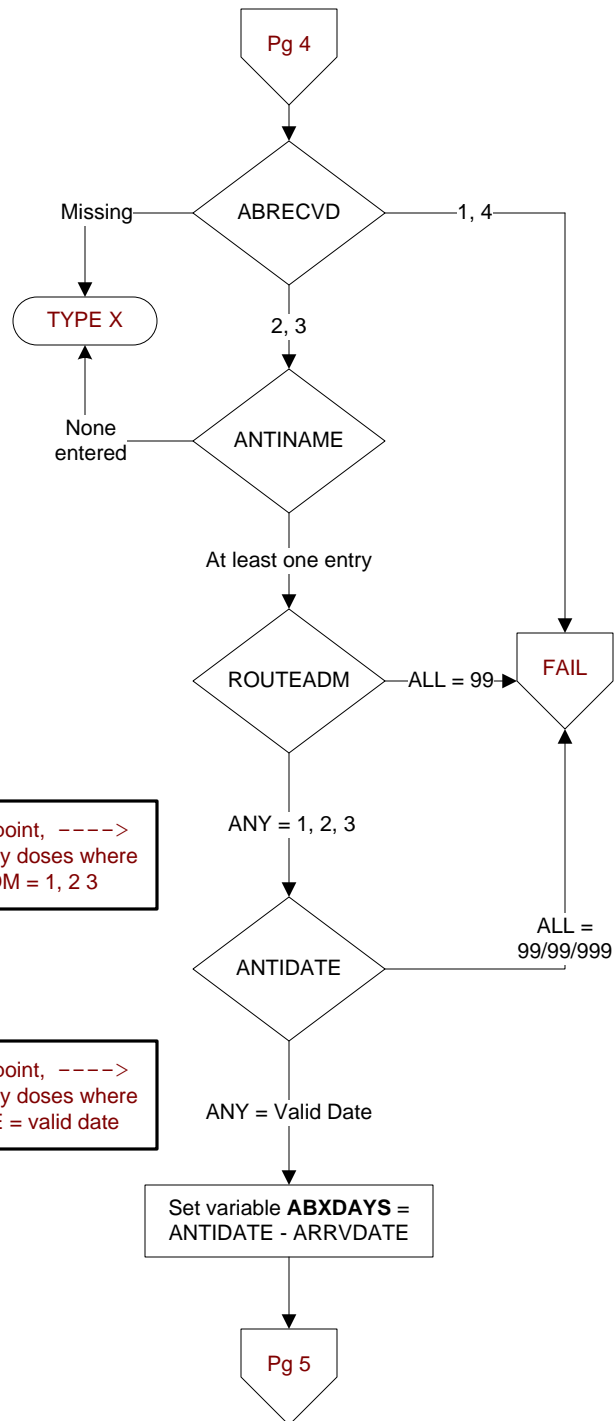
1. PO, NG, PEG tube (Oral)
2. IV (Intravenous)
3. IM (Intramuscular)
99. UTD (Unable to determine route)

ANTIDATE (Acute Care)

What WAS the date of administration for the antibiotic dose?

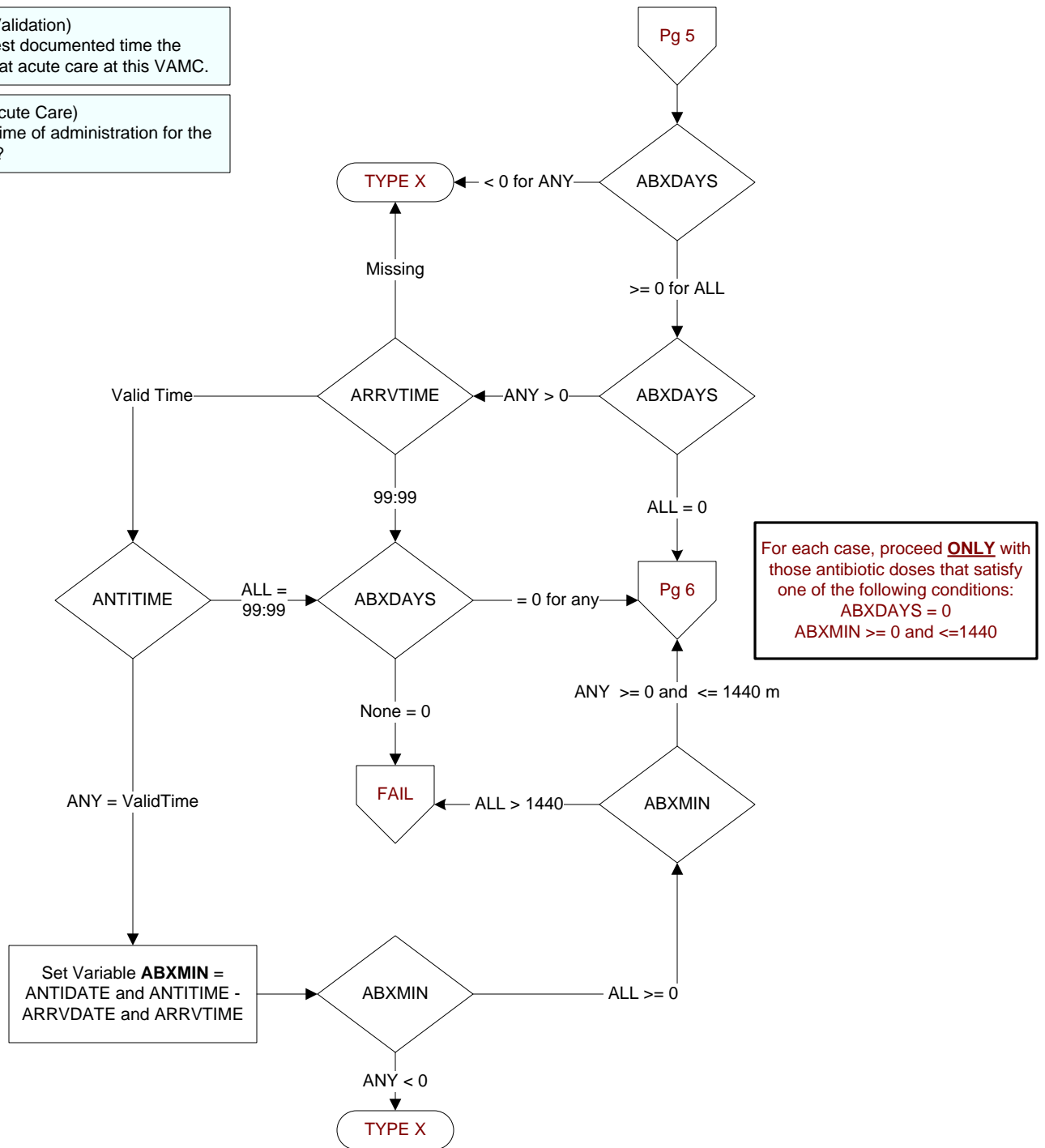
From this point, ---->
include only doses where
ROUTEADM = 1, 2 3

From this point, ---->
include only doses where
ANTIDATE = valid date

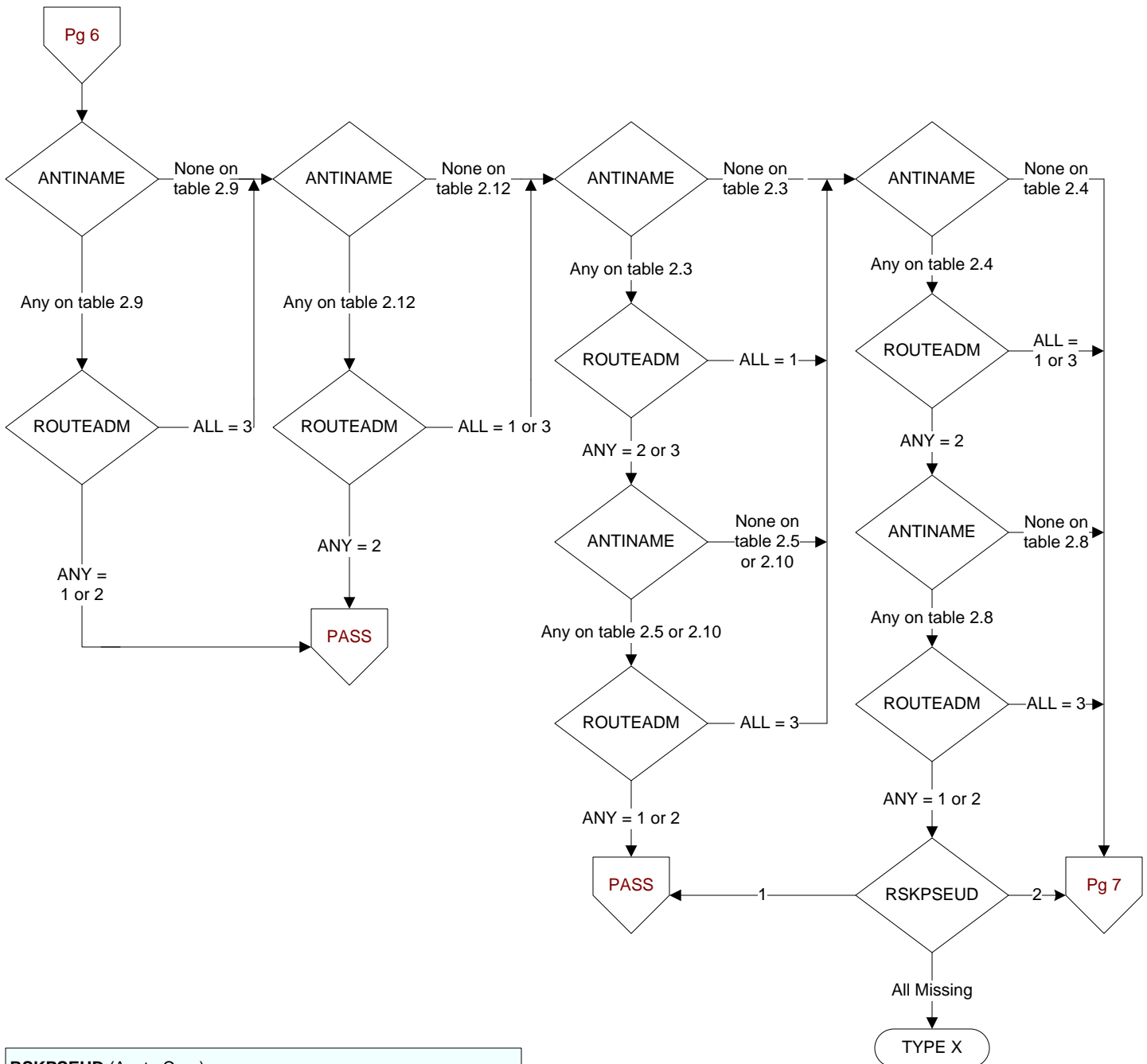


ARRVTIME (Validation)
Enter the earliest documented time the patient arrived at acute care at this VAMC.

ANTITIME (Acute Care)
What was the time of administration for the antibiotic dose?



NOTE: For all regimens, when checking the route of antibiotic, check **ONLY** for the corresponding dose.



RSKPSEUD (Acute Care)

Did the patient have risk of pseudomonas as evidenced by documentation of one of the following?

- Structural lung disease **AND** documented history of repeated antibiotics or chronic systemic corticosteroid use. Repeated antibiotics and/or chronic systemic corticosteroid use can be for any reason. It does not have to be linked to the structural lung disease.
- Bronchiectasis documented as a possible consideration by a physician/APN/PA or pharmacist at the time of admission
- Physician/APN/PA or pharmacist documented pseudomonal risk

1. Yes
2. No



