

**CATNUM**

Sample category

16. AMI - Outpatient visit	54. Frail/Elderly
36. SCI Dx	60. DM Outpatient
48. Female, age 20-69	61. Inpatient SCI
50. Random Sample	68. Contract CBOC
51. Random Sample MH	

**REVSTAT**

REVIEW STATUS (not abstracted)

0. Abstraction has not begun  
 1. Abstraction in progress  
 2. Abstraction completed w/o errors  
 3. TVG failure (exclusion)  
 4. Record contains missing required answers (error record)  
 5. Administrative exclusion from all measures

**DOCHOSPCE** (PI module)

Is one of the following documented in the medical record:

- the patient is enrolled in a VHA or community-based Hospice program
- the patient has a diagnosis of cancer of the liver, pancreas, or esophagus
- on the problem list it is documented the patient's life expectancy is less than 6 months?

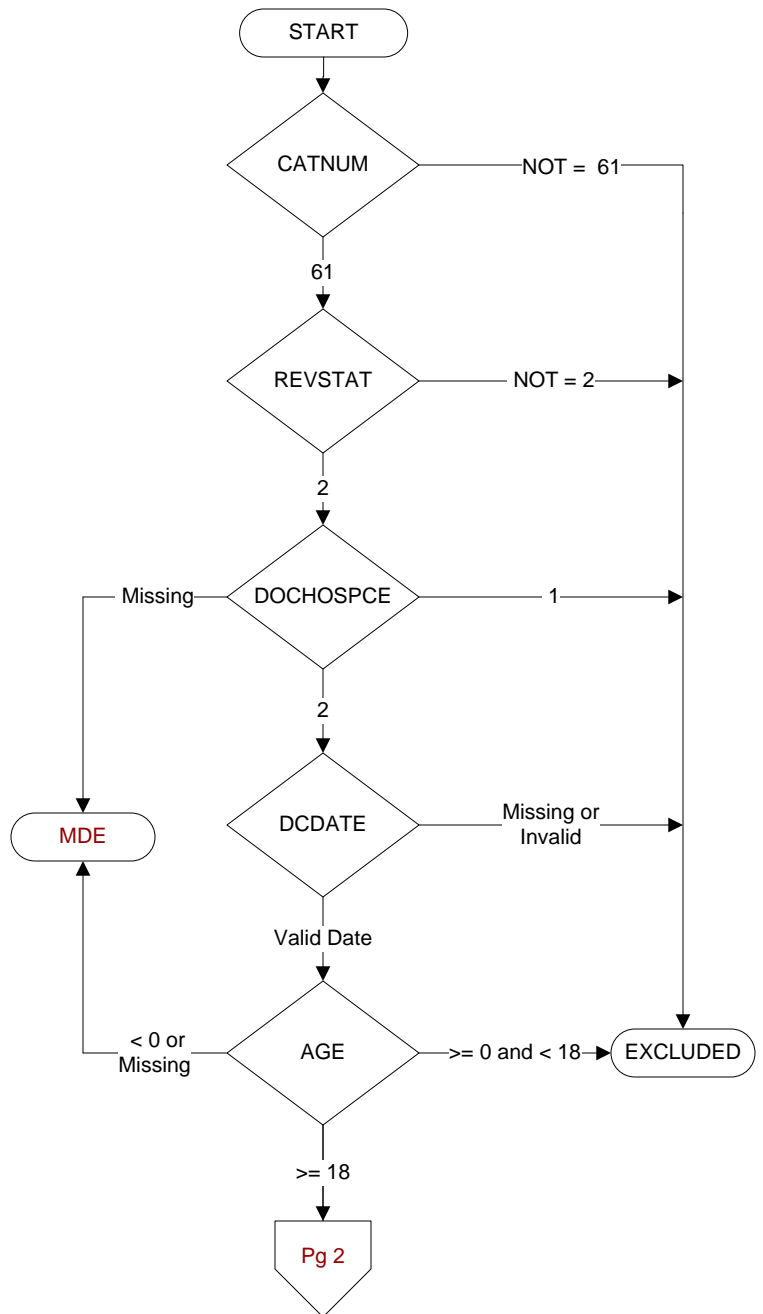
**DCDATE** (Validation)

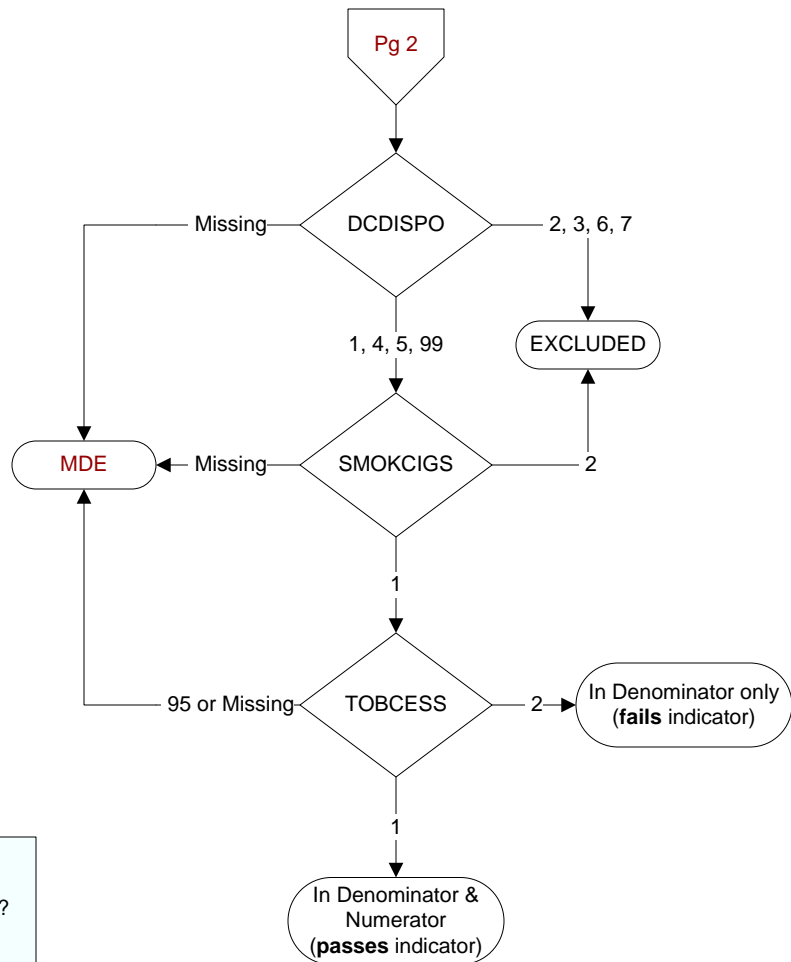
Enter the date of discharge.

**AGE** (Calculated field)

NEXUSDT - BIRTHDT (clinic visit date - date of birth)  
 or  
 If CATNUM = 61 and no NEXUS visit then ADMDT - BIRTHDT

**MDE = Missing or  
Invalid Data Exclusion  
(data error)**



**SMOKCIGS** (PI Module)

Did the adult patient smoke cigarettes any time during the year prior to hospital arrival?

1. Yes
2. No or unable to determine from medical record documentation

**TOBCESS** (PI Module)

Did the patient/caregiver receive smoking/tobacco use cessation advice or counseling during the hospitalization?

1. Yes
2. No
95. Not applicable

**DCDISPO** (Validation)

What was the patient's discharge disposition on the day of discharge?

1. Home
  - Assisted Living Facilities
  - Court/Law Enforcement – includes detention facilities, jails, and prison
  - Board and care, domiciliary, foster or residential care, group or personal care homes, and homeless shelters
  - Home with Home Health Services
  - Outpatient Services including outpatient procedures at another hospital, outpatient Chemical Dependency Programs and Partial Hospitalization
2. Hospice – Home
3. Hospice – Health Care Facility
  - General Inpatient and Respite, Residential and Skilled Facilities, and Other Health Care Facilities
4. Acute Care Facility
  - Acute Short Term General and Critical Access Hospitals
  - Cancer and Children's Hospitals
  - Department of Defense and Veteran's Administration Hospitals
5. Other Health Care Facility
  - Extended or Immediate Care Facility (ECF/ICF)
  - Long Term Acute Care Hospital (LTACH)
  - Nursing Home or Facility including Veteran's Administration Nursing Facility
  - Psychiatric Hospital or Psychiatric Unit of a Hospital
  - Rehabilitation Facility including Inpatient Rehabilitation Facility/Hospital or Rehabilitation Unit of a Hospital
  - Skilled Nursing Facility (SNF), Sub-Acute Care or Swing Bed
  - Transitional Care Unit (TCU)
6. Expired
7. Left Against Medical Advice/AMA
99. Not documented or unable to determine