

**REVSTAT**

REVIEW STATUS (not abstracted)

- 0. Abstraction has not begun
- 1. Abstraction in progress
- 2. Abstraction completed w/o errors
- 3. TVG failure (exclusion)
- 4. Record contains missing required answers (error record)
- 5. Administrative exclusion from all measures

**DTOFDC (IHF)**

Discharge date: (rcv'd on pull list and may not be modified)

**PRINCODE (IHF)**

Enter the ICD-9-CM principal diagnosis code.

**ENTRADM (IHF)**

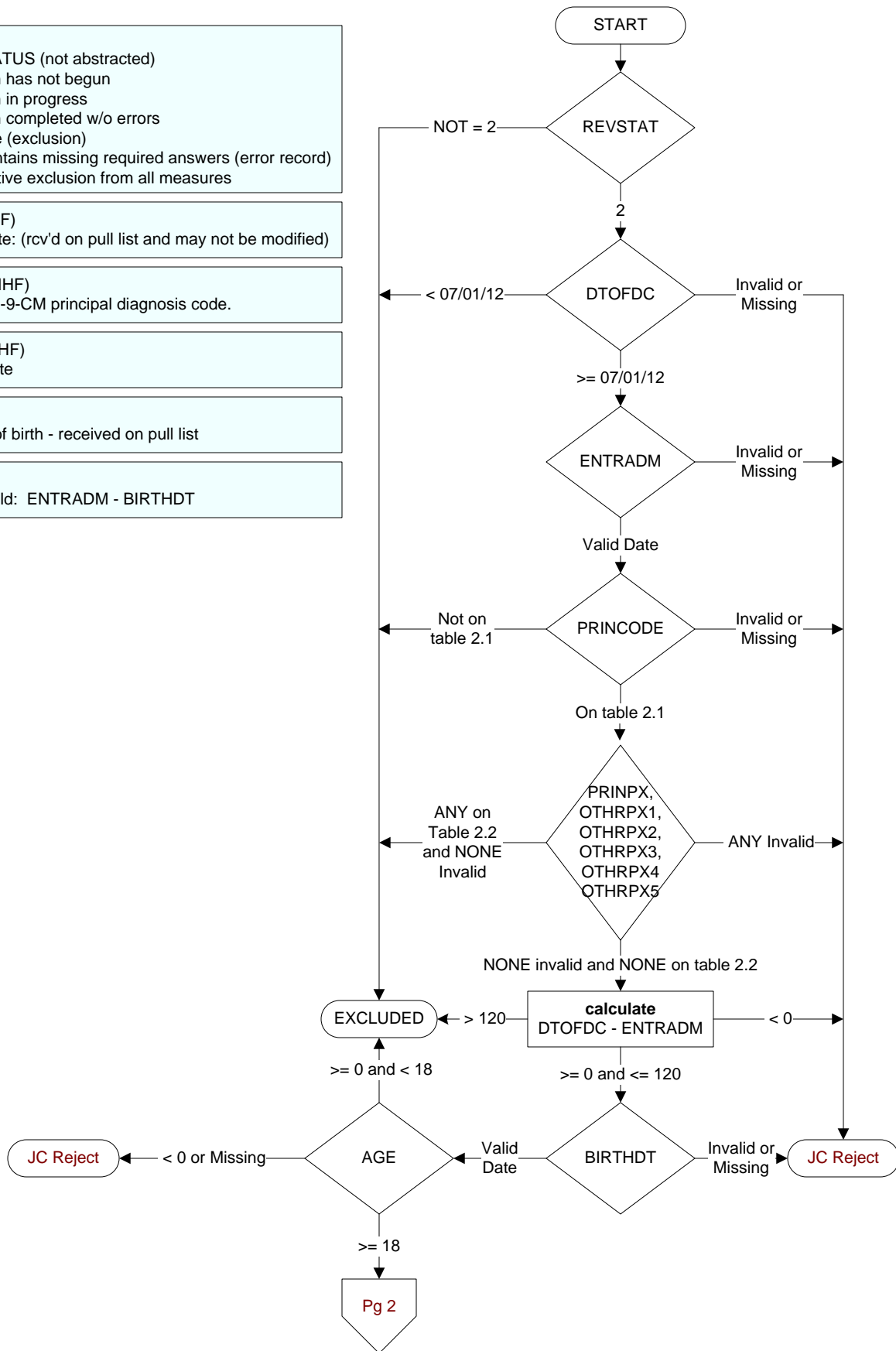
Admission date

**BIRTHDT**

Patient date of birth - received on pull list

**AGE**

Calculated field: ENTRADM - BIRTHDT



**CLNTRIAL (IHF)**

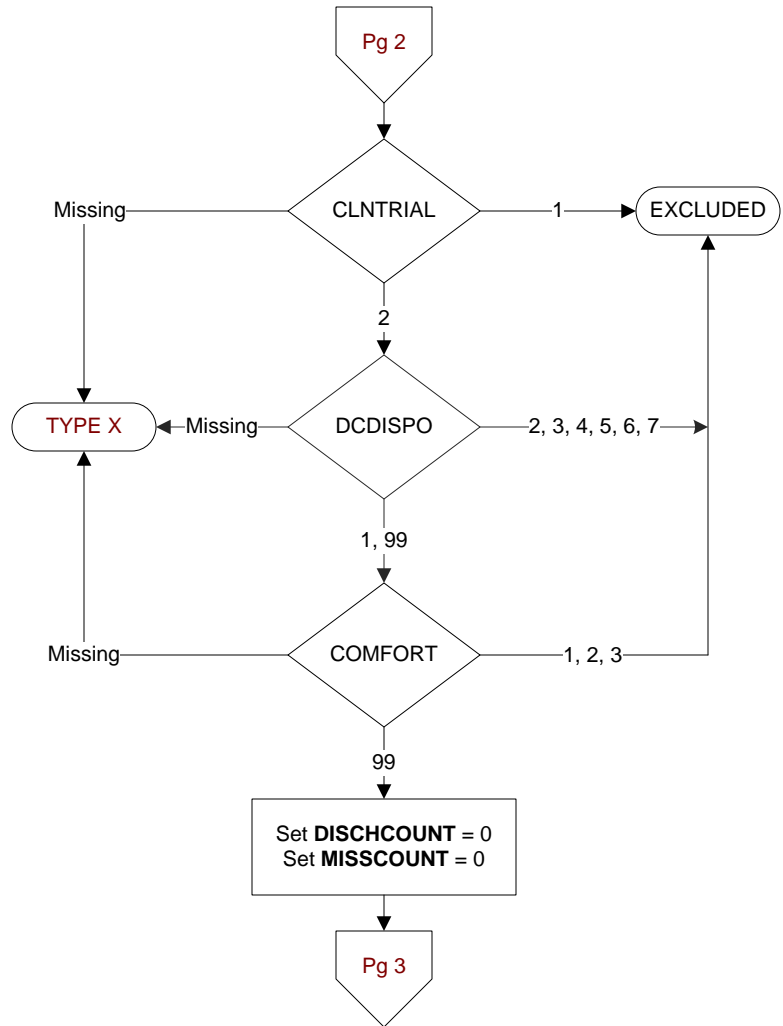
During this hospital stay, was the patient enrolled in a clinical trial in which patients with heart failure were being studied?

1. Yes
2. No

**COMFORT (IHF)**

When is the earliest physician, APN, or PA documentation of comfort measures only?

1. Day of arrival (day 0) or day after arrival (day 1)
2. Two or more days after arrival (day 2 or greater)
3. Comfort measures only documented during hospital stay, but timing unclear
99. Comfort measures only was not documented by the physician/APN/PA or unable to determine

**DCDISPO (IHF)**

What was the patient's discharge disposition on the day of discharge?

1. Home
  - Assisted Living Facilities
  - Court/Law Enforcement – includes detention facilities, jails, and prison
  - Board and care, domiciliary, foster or residential care, group or personal care homes, and homeless shelters
  - Home with Home Health Services
  - Outpatient Services including outpatient procedures at another hospital, outpatient Chemical Dependency Programs and Partial Hospitalization
2. Hospice – Home
3. Hospice – Health Care Facility
  - General Inpatient and Respite, Residential and Skilled Facilities, and Other Health Care Facilities
4. Acute Care Facility
  - Acute Short Term General and Critical Access Hospitals
  - Cancer and Children's Hospitals
  - Department of Defense and Veteran's Administration Hospitals
5. Other Health Care Facility
  - Extended or Immediate Care Facility (ECF/ICF)
  - Long Term Acute Care Hospital (LTACH)
  - Nursing Home or Facility including Veteran's Administration Nursing Facility
  - Psychiatric Hospital or Psychiatric Unit of a Hospital
  - Rehabilitation Facility including Inpatient Rehabilitation Facility/Hospital or Rehabilitation Unit of a Hospital
  - Skilled Nursing Facility (SNF), Sub-Acute Care or Swing Bed
  - Transitional Care Unit (TCU)
6. Expired
7. Left Against Medical Advice/AMA
99. Not documented or unable to determine

Does the medical record contain a copy of written discharge instructions or documentation of educational material given to the patient or caregiver at discharge, addressing all of the following:

**DCDOCACT** (IHF)

Activity level after discharge?

1. Yes

2. No

95. Not applicable

**DCDOCDIET** (IHF)

Diet/fluid intake after discharge?

1. Yes

2. No

95. Not applicable

**DCDOCMEDS** (IHF)

All discharge medications?

1. Yes

2. No

95. Not applicable

**DCDOCAPPT** (IHF)

Follow-up with a physician, nurse practitioner, or physician's assistant after discharge?

1. Yes

2. No

95. Not applicable

**DCDOCWT** (IHF)

Weight monitoring after discharge?

1. Yes

2. No

95. Not applicable

**DCDOCSYM** (IHF)

What to do if heart failure symptoms worsen?

1. Yes

2. No

95. Not applicable

