

REVSTAT

REVIEW STATUS (not abstracted)

- 0. Abstraction has not begun
- 1. Abstraction in progress
- 2. Abstraction completed w/o errors
- 3. TVG failure (exclusion)
- 4. Record contains missing required answers (error record)
- 5. Administrative exclusion from all measures

CATNUM

Sample category (received on pull list)

- 65. No VTE sub-population
- 66. Principal VTE sub-population
- 67. Secondary VTE sub-population

VTEDCDT (VTE)

Discharge Date

VTEADMDT (VTE)

Date of admission to acute inpatient care:

VTEPRIN (VTE)

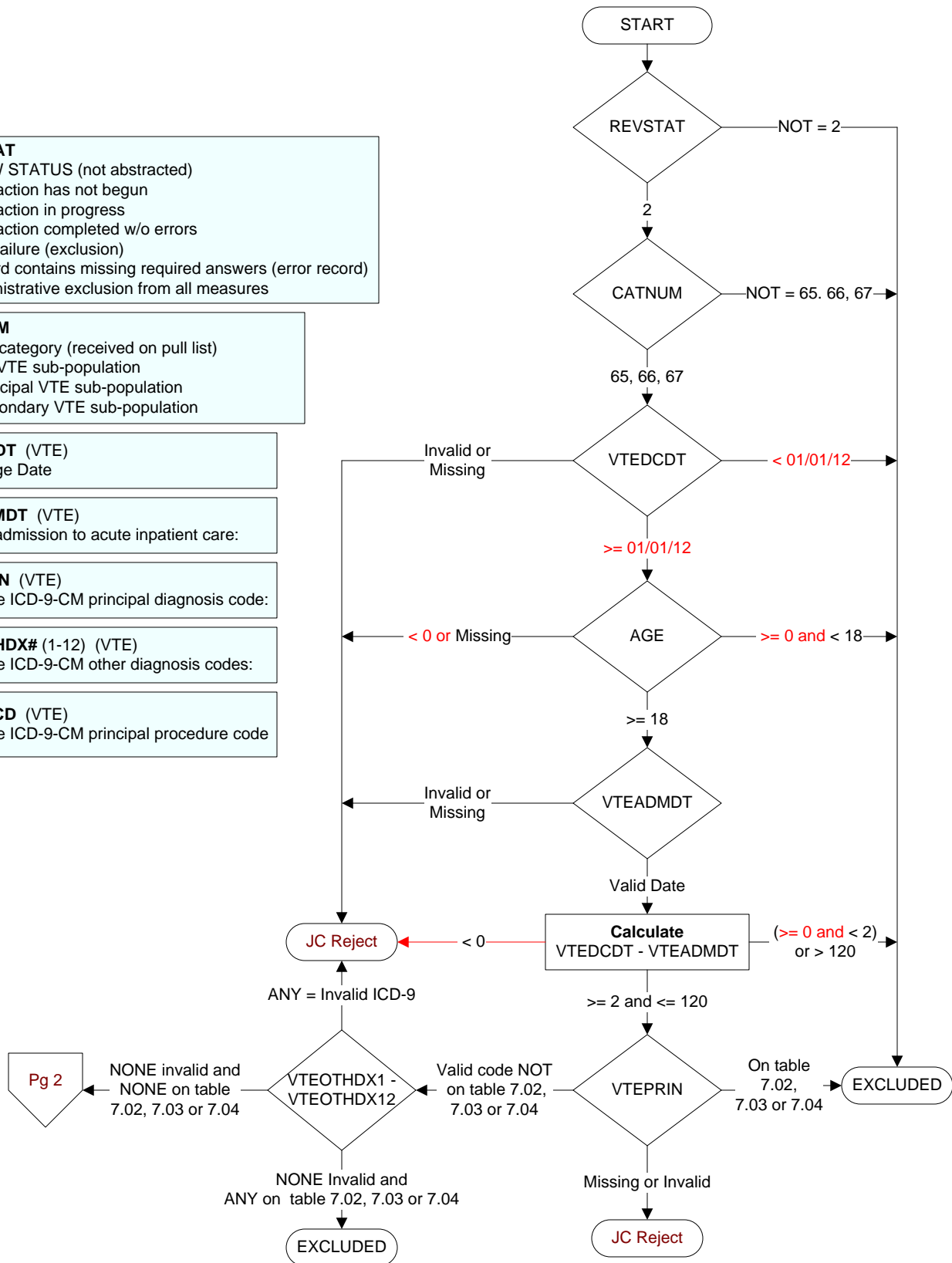
Enter the ICD-9-CM principal diagnosis code:

VTEOTHDX# (1-12) (VTE)

Enter the ICD-9-CM other diagnosis codes:

VTEPXCD (VTE)

Enter the ICD-9-CM principal procedure code



COMFORT (VTE)

When is the earliest physician, APN, or PA documentation of comfort measures only?

1. Day of arrival (day 0) or day after arrival (day 1)
2. Two or more days after arrival (day 2 or greater)
3. Comfort measures only documented during hospital stay, but timing unclear
99. Comfort measures only was not documented by the physician/APN/PA or unable to determine

CLNTRIAL (VTE)

During this hospital stay, was the patient enrolled in a clinical trial in which patients with venous thromboembolism (VTE) were being studied?

1. Yes
2. No

ICUVTE (VTE)

Was the patient admitted or transferred to the intensive care unit (ICU) anytime during this hospitalization?

1. Yes
2. No
99. Unable to determine

ICUADMDT (VTE)

Enter the earliest date that the order was written for the ICU admission or transfer during this hospitalization.

ANEBEGDT (VTE)

Enter the anesthesia start date.

