

CATNUM

Sample category
 16. AMI - Outpatient visit
 36. SCI Dx
 48. Female, age 20-69
 50. Random Sample
 51. Random Sample MH
 54. Frail/Elderly
 60. DM Outpatient
 61. Inpatient SC
 68. Contract CBOC

FEFLAG (rcvd on pull list)

FE case flagged for CGPI review / scoring?
 0. No
 1. Yes

REVSTAT

REVIEW STATUS (not abstracted)
 0. Abstraction has not begun
 1. Abstraction in progress
 2. Abstraction completed w/o errors
 3. TVG failure (exclusion)
 4. Record contains missing required answers (error record)
 5. Administrative exclusion from all measures

MODSEVCI (MH)

During the past year, did the clinician document in the record that the patient has moderate or severe cognitive impairment?
 1. Yes
 2. No

COGSCOR (MH)

What was the outcome of the screen for cognitive impairment?
 4. Score indicated mild cognitive impairment
 5. Score indicated moderate to severe impairment
 6. Score indicated no cognitive impairment
 95. Not applicable
 99. No score documented in the record or unable to determine outcome

SCRNAUDC (MH)

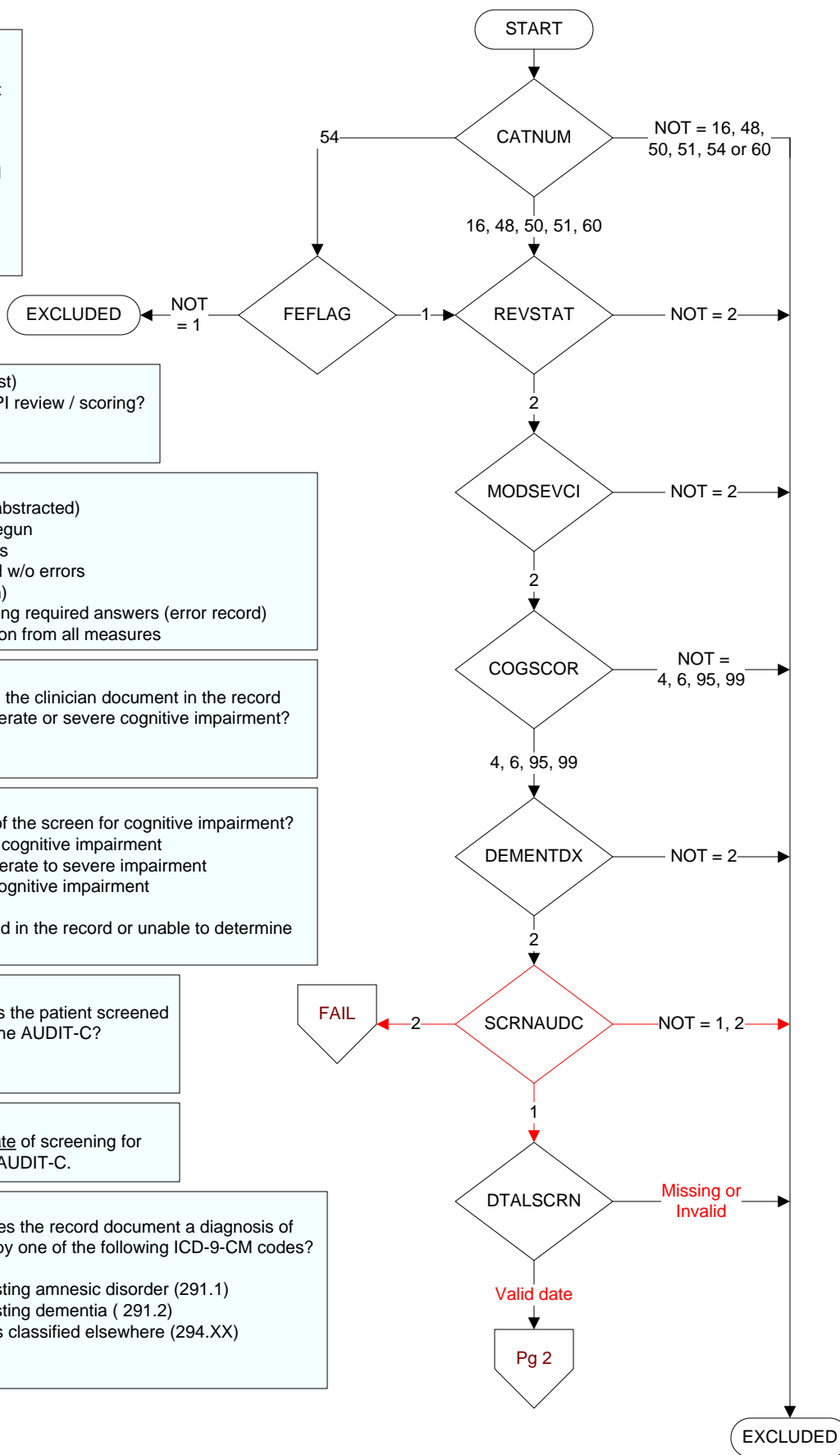
Within the past year, was the patient screened for alcohol misuse with the AUDIT-C?
 1. Yes
 2. No

DTALSCRN (MH)

Enter the most recent date of screening for alcohol misuse with the AUDIT-C.

DEMENTDX (MH)

During the past year, does the record document a diagnosis of dementia as evidenced by one of the following ICD-9-CM codes?
 -- Dementia (290.XX)
 -- Alcohol-induced persisting amnesic disorder (291.1)
 -- Alcohol-induced persisting dementia (291.2)
 -- Dementia in conditions classified elsewhere (294.XX)
 1. Yes
 2. No



AUDC1 (MH)

Enter the score documented for AUDIT -C Question # 1 in the past year.

"How often did you have a drink containing alcohol in the past year?"

- 0. Never
- 1. Monthly or less
- 2. Two to four times a month
- 3. Two to three times a week
- 4. Four or more times a week
- 99. Not documented

AUDC2 (MH)

Enter the score documented for AUDIT-C Question #2 in the past year.

"How many drinks containing alcohol did you have on a typical day when you were drinking in the past year?"

- 0. 1 or 2
- 1. 3 or 4
- 2. 5 or 6
- 3. 7 to 9
- 4. 10 or more
- 95. Not applicable
- 99. Not documented

AUDC3 (MH)

Enter the score documented for AUDIT-C Question #3 in the past year.

"How often did you have six or more drinks on one occasion in the past year?"

- 0. Never
- 1. Less than monthly
- 2. Monthly
- 3. Weekly
- 4. Daily or almost daily
- 95. Not applicable
- 99. Not documented

ALCSCOR (MH)

Enter the total AUDIT-C score documented within the past year in the medical record.

(If the total score is not documented in the record, enter default zz)

OUTDOC (MH)

Was the outcome of the alcohol screen documented in the medical record?

- 1. Outcome positive documented
- 2. Outcome negative documented
- 99. Outcome not documented

