

**PHQ2DT (MH)**  
Enter the date within the past year of the most recent screening for depression by the PHQ-2 or PHQ-9.

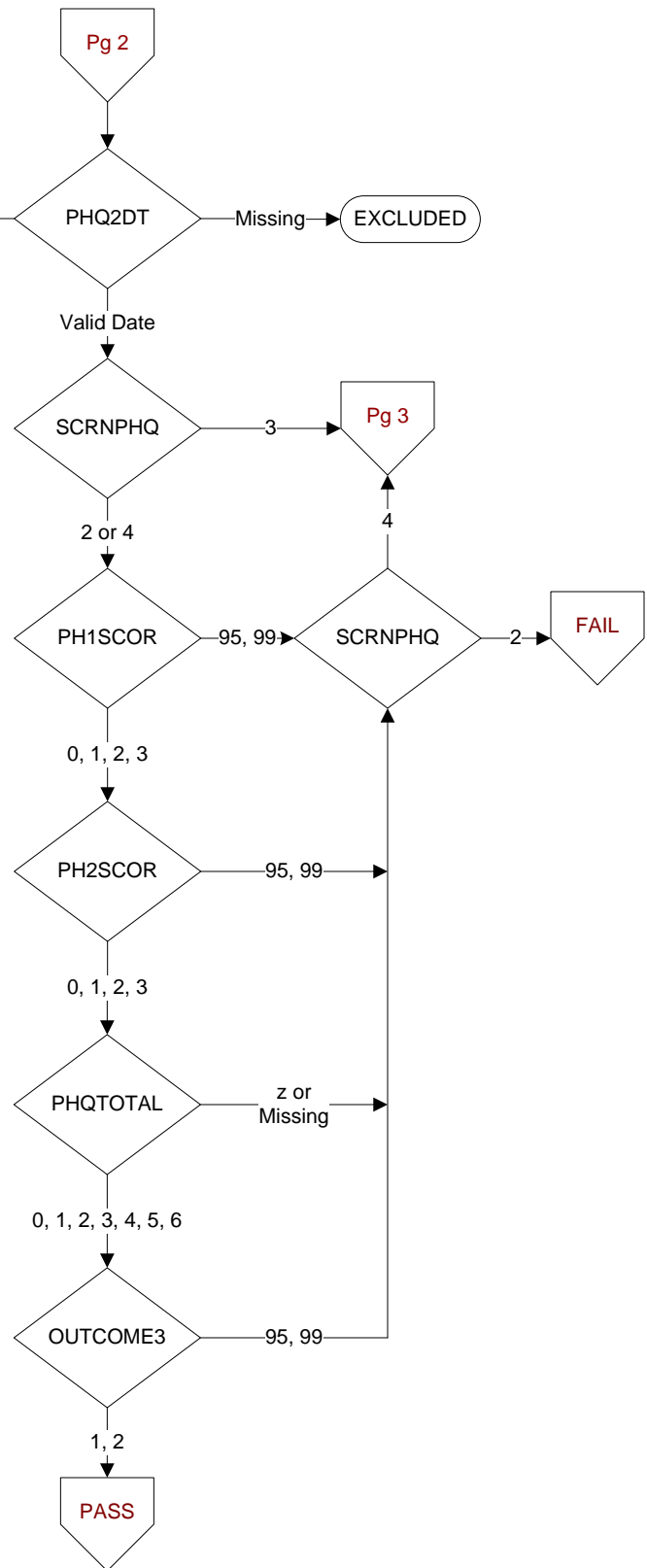
**SCRNPHQ (MH)**  
On the date of the most recent screening for depression, was the patient screened by the PHQ-2 or the PHQ-9?  
2. Screened by PHQ-2  
3. Screened by PHQ-9  
4. Screened by PHQ-2 AND PHQ-9 on the same date

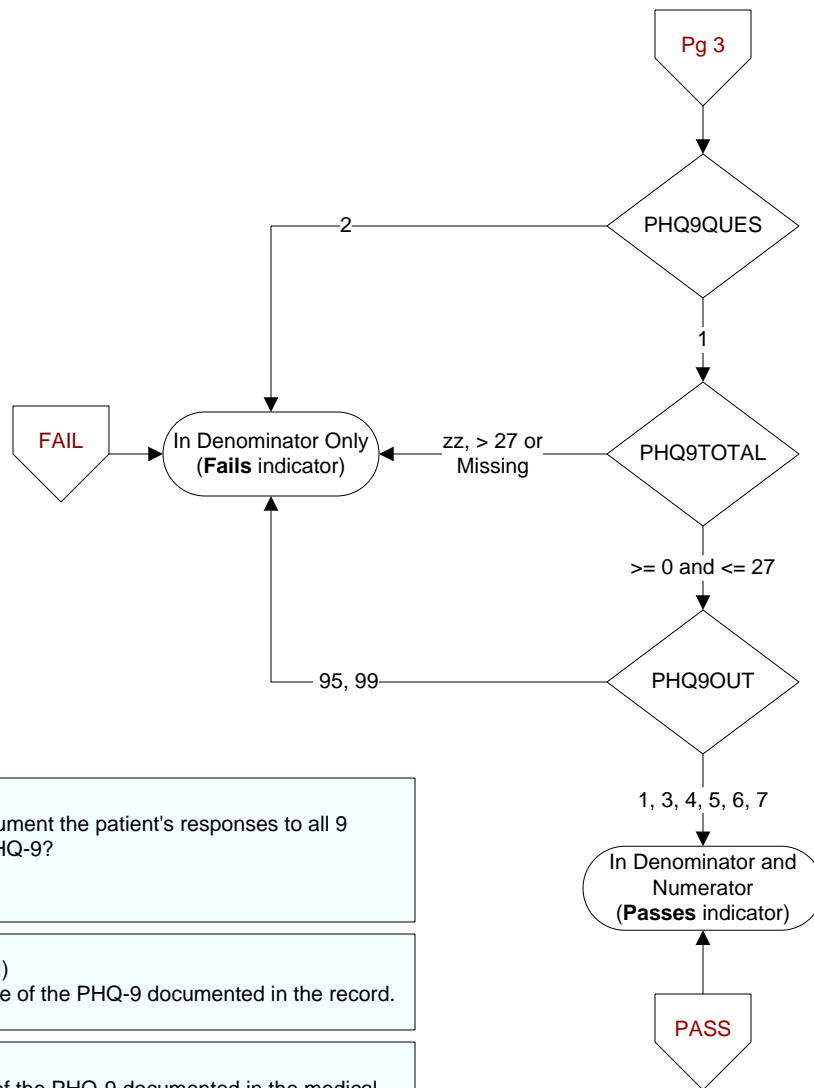
**PH1SCOR (MH)**  
Enter the score for PHQ-2 Question 1 documented in the record:  
**Over the past 2 weeks, have you been bothered by little interest or pleasure in doing things?**  
0. Not at all --> 0  
1. Several days --> 1  
2. More than half the days --> 2  
3. Nearly every day --> 3  
95. Not applicable  
99. No answer documented

**PH2SCOR (MH)**  
Enter the score for PHQ-2 Question 2 documented in the record:  
**Over the past 2 weeks, have you been bothered by feeling down, depressed, or hopeless?**  
0. Not at all --> 0  
1. Several days --> 1  
2. More than half the days --> 2  
3. Nearly every day --> 3  
95. Not applicable  
99. No answer documented

**PHQTOTAL (MH)**  
Enter the total score for the PHQ-2 questions documented in the medical record.

**OUTCOME3 (MH)**  
What was the outcome of the depression screen?  
1. Outcome positive (suggestive of depression)  
2. Outcome negative (no indication of depression)  
95. Not applicable  
99. Outcome not documented





**PHQ9QUES (MH)**  
Did the record document the patient's responses to all 9 questions of the PHQ-9?  
1. Yes  
2. No

**PHQ9TOTAL (MH)**  
Enter the total score of the PHQ-9 documented in the record.

**PHQ9OUT (MH)**  
Was the outcome of the PHQ-9 documented in the medical record?  
1. Outcome positive  
3. Score suggestive of no depression  
4. Score suggestive of mild depression  
5. Score suggestive of moderate depression  
6. Score suggestive of moderately severe depression  
7. Score suggestive of severe depression  
95. Not applicable  
99. No documentation of outcome