

**REVSTAT**

REVIEW STATUS (not abstracted)

- 0. Abstraction has not begun
- 1. Abstraction in progress
- 2. Abstraction completed w/o errors
- 3. TVG failure (exclusion)
- 4. Record contains missing required answers (error record)
- 5. Administrative exclusion from all measures

**CATNUM**

Sample category (received on pull list)

- 65. No VTE sub-population
- 66. Principal VTE sub-population
- 67. Secondary VTE sub-population

**VTEDCDT (VTE)**

Discharge Date

**VTEADMDT (VTE)**

Date of admission to acute inpatient care:

**VTEPRIN (VTE)**

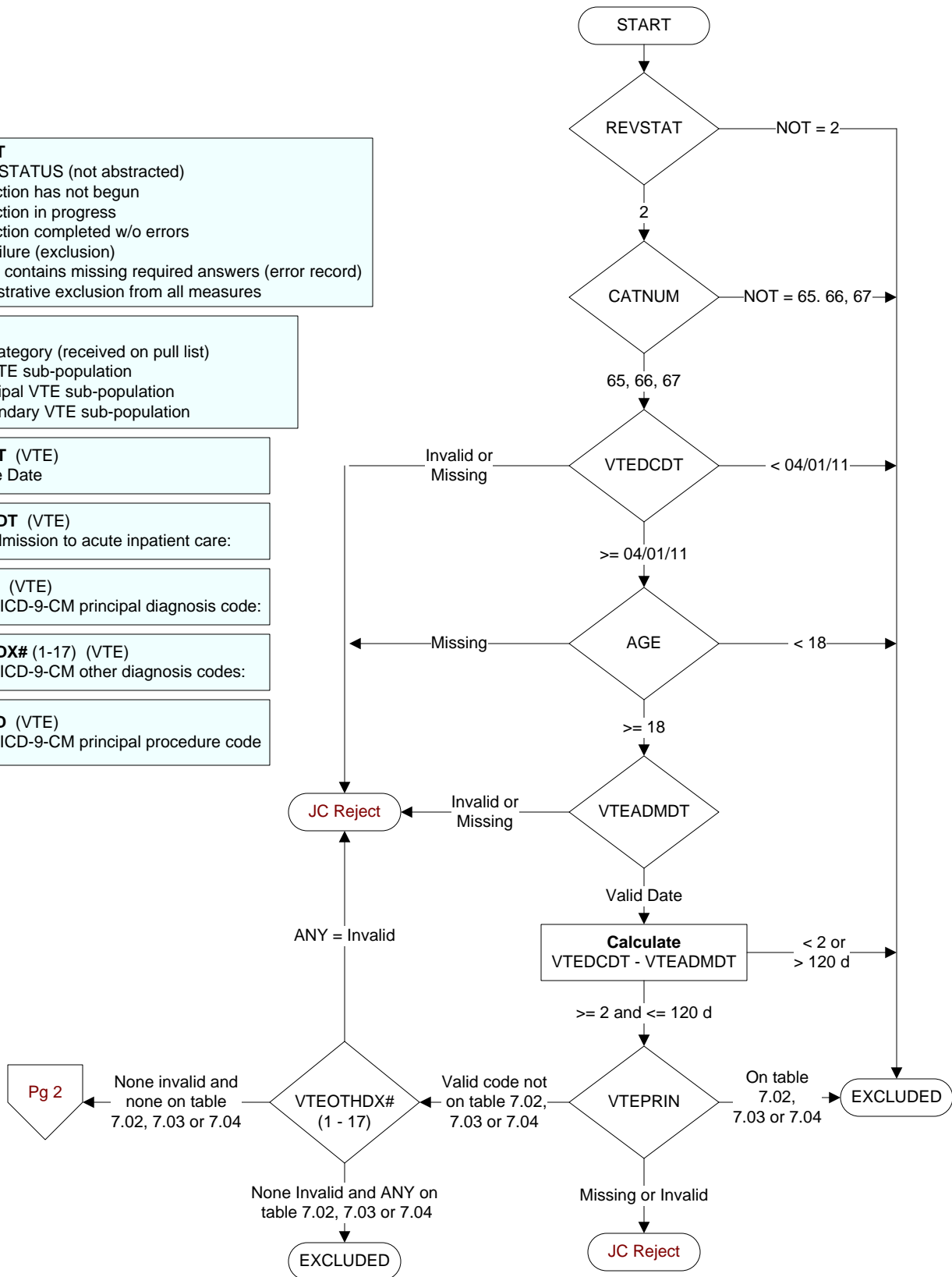
Enter the ICD-9-CM principal diagnosis code:

**VTEOTHDX# (1-17) (VTE)**

Enter the ICD-9-CM other diagnosis codes:

**VTEPXCD (VTE)**

Enter the ICD-9-CM principal procedure code



**COMFORT (VTE)**

When is the earliest physician, APN, or PA documentation of comfort measures only?

1. Day of arrival (day 0) or day after arrival (day 1)
2. Two or more days after arrival (day 2 or greater)
3. Comfort measures only documented during hospital stay, but timing unclear
99. Comfort measures only was not documented by the physician/APN/PA or unable to determine

**CLNTRIAL (VTE)**

During this hospital stay, was the patient enrolled in a clinical trial in which patients with venous thromboembolism (VTE) were being studied?

1. Yes
2. No

**ICUVTE (VTE)**

Was the patient admitted or transferred to the intensive care unit (ICU) for more than one day during this hospitalization?

1. Yes
2. No
99. Unable to determine

**ICUADMDT (VTE)**

Enter the earliest date the patient was admitted or transferred to ICU for more than one day during this hospitalization.

**ANEBEGDT (VTE)**

Enter the anesthesia start date.

