

REVSTAT

REVIEW STATUS (not abstracted)

- 0. Abstraction has not begun
- 1. Abstraction in progress
- 2. Abstraction completed w/o errors
- 3. TVG failure (exclusion)
- 4. Record contains missing required answers (error record)
- 5. Administrative exclusion from all measures

APROCODE (Validation)

Enter the ICD-9-CM principal diagnosis code

DCDATE (Validation)

Enter the date of discharge. (received on pull list and may not be modified)

ADMDT (Validation)

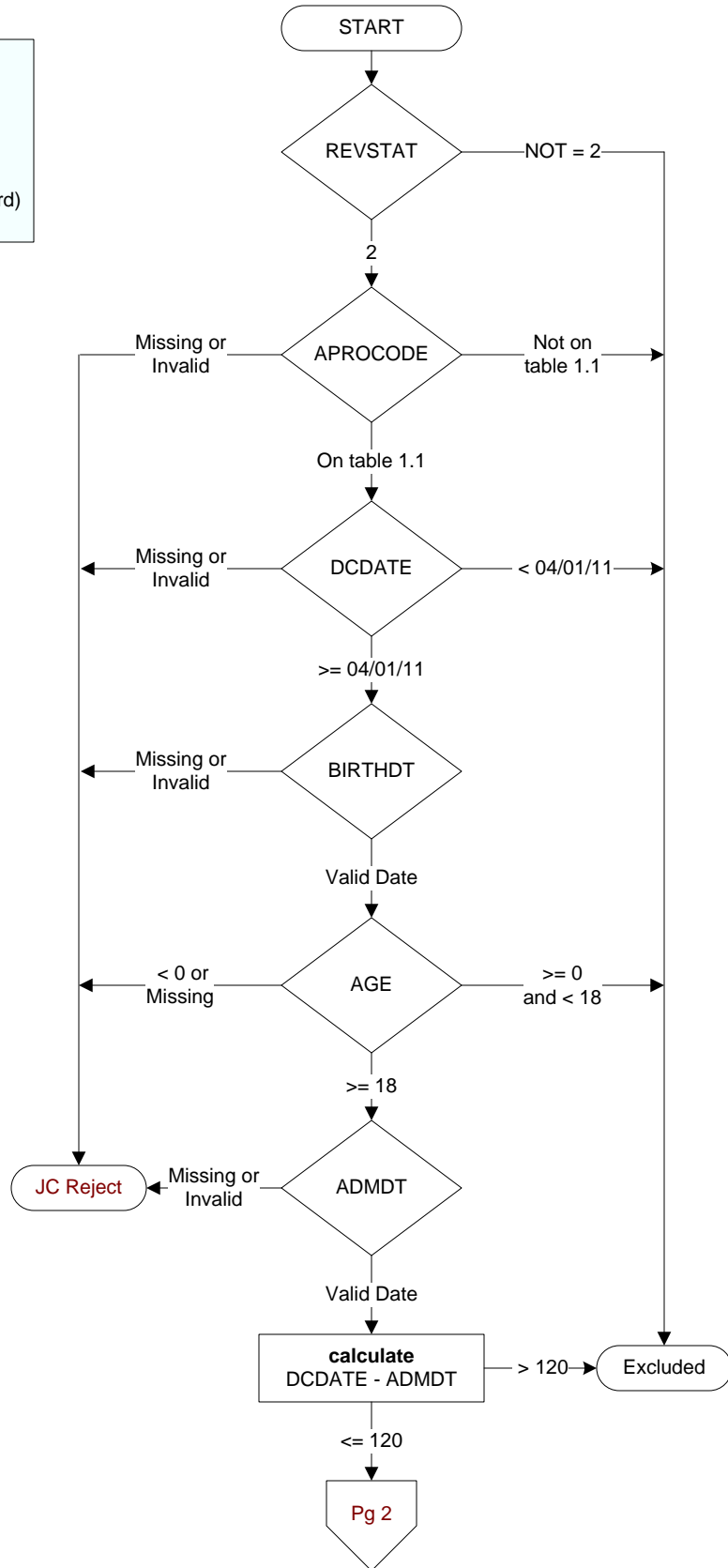
Enter the date the patient was formally admitted to inpatient status at this VAMC.

BIRTHDT (rcvd on pull list)

Patients date of birth.

AGE

calculated field: ADMDT - BIRTHDT



COMFORT (Validation)

When is the earliest physician, APN, or PA documentation of comfort measures only?

1. Day of arrival (day 0) or day after arrival (day 1)
2. Two or more days after arrival (day 2 or greater)
3. Comfort measures only documented during hospital stay, but timing unclear
99. Comfort measures only was not documented by the physician/APN/PA or unable to determine

CLNTRIAL (Validation)

During this hospital stay, was the patient enrolled in a clinical trial in which patients with acute myocardial infarction (AMI) were being studied? (Includes AMI, STEMI, NSTEMI, or heart attack)

- 1 = Yes
- 2 = No

TRANSIN2 (Validation)

Was the patient received as a transfer from inpatient, outpatient or emergency/observation department of another hospital OR from an ambulatory surgery center?

1. Patient received as a transfer from an inpatient department of another hospital
2. Patient received as a transfer from an outpatient department of another hospital (excludes emergency/observation departments)
3. Patient received as a transfer from the emergency/observation department of another hospital
4. Patient received as a transfer from an ambulatory surgery center
99. None of the above or unable to determine from medical record documentation.

COMM1TX (Validation)

Did the patient present initially to a community hospital where he/she received all or part of the first 24 hours of care for ACS?

1. yes
2. no

COMM1NPT (Validation)

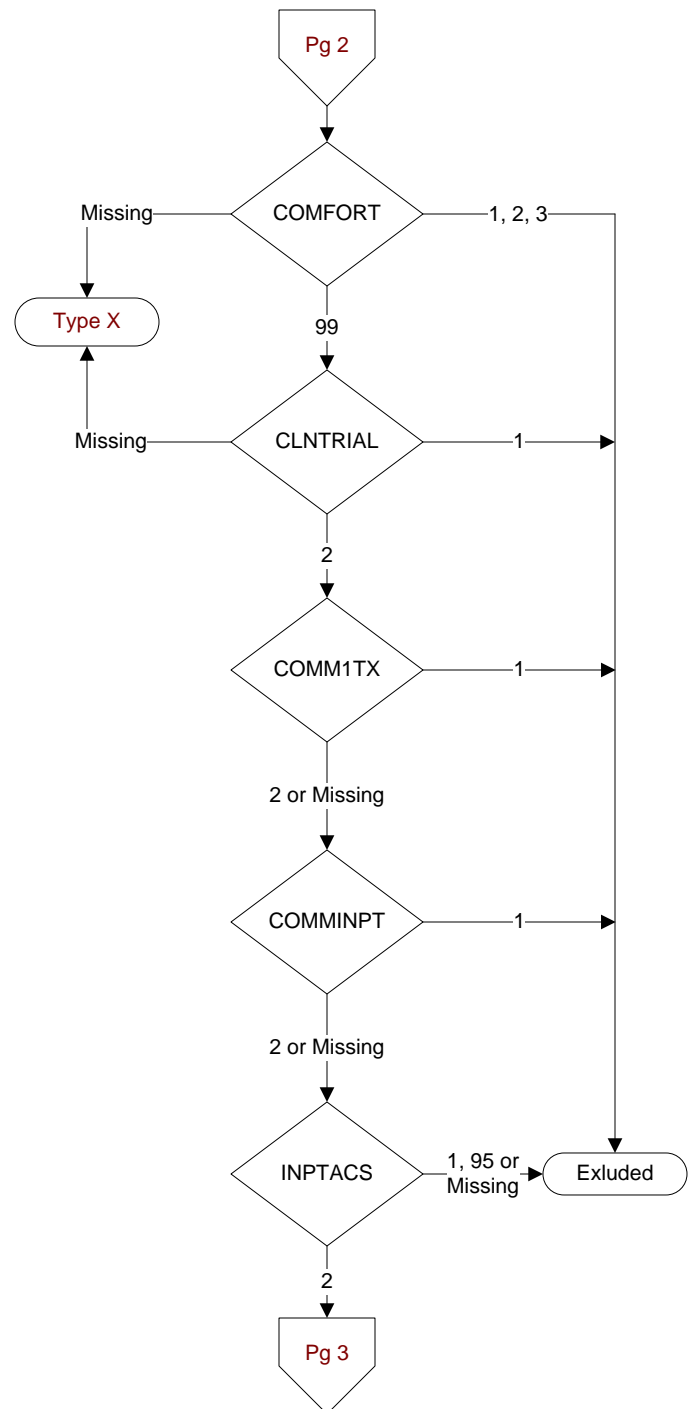
Was the patient a transfer from a community hospital where he/she was an inpatient for ACS care?

1. yes
2. no

INPTACS (Validation)

Was the veteran already a VAMC inpatient when ACS occurred?

1. yes
2. no
95. not applicable



DCDISPO (Validation)

What was the patient's discharge disposition on the day of discharge?

1. Home
 - Assisted Living Facilities
 - Court/Law Enforcement – includes detention facilities, jails, and prison
 - Board and care, domiciliary, foster or residential care, group or personal care homes, and homeless shelters
 - Home with Home Health Services
 - Outpatient Services including outpatient procedures at another hospital, outpatient Chemical Dependency Programs and Partial Hospitalization
2. Hospice – Home
3. Hospice – Health Care Facility
 - General Inpatient and Respite, Residential and Skilled Facilities, and Other Health Care Facilities
4. Acute Care Facility
 - Acute Short Term General and Critical Access Hospitals
 - Cancer and Children's Hospitals
 - Department of Defense and Veteran's Administration Hospitals
5. Other Health Care Facility
 - Extended or Immediate Care Facility (ECF/ICF)
 - Long Term Acute Care Hospital (LTACH)
 - Nursing Home or Facility including Veteran's Administration Nursing Facility
 - Psychiatric Hospital or Psychiatric Unit of a Hospital
 - Rehabilitation Facility including Inpatient Rehabilitation Facility/Hospital or Rehabilitation Unit of a Hospital
 - Skilled Nursing Facility (SNF), Sub-Acute Care or Swing Bed
 - Transitional Care Unit (TCU)
6. Expired
7. Left Against Medical Advice/AMA
99. Not documented or unable to determine

STATDC (Discharge)

Was a statin medication prescribed at discharge?

Examples include, but are not limited to:

- atorvastatin calcium (Lipitor)
- fluvastatin sodium (Lescol)
- lovastatin (Mevacor) (Altacor)
- pitavastatin (Livalo)
- pravastatin sodium (Pravacol)
- rosuvastatin calcium (Crestor)
- simvastatin (Zocor)
- ezetimibe/simvastatin (Vytorin)

1. Yes
2. No

INPTLDL (Hx & Assmt)

Was an LDL-cholesterol (LDL-c) test in mg/dL (or mg/100ml) performed during this hospital stay?

1. Yes
2. No

INPTLDLV (Hx & Assmt)

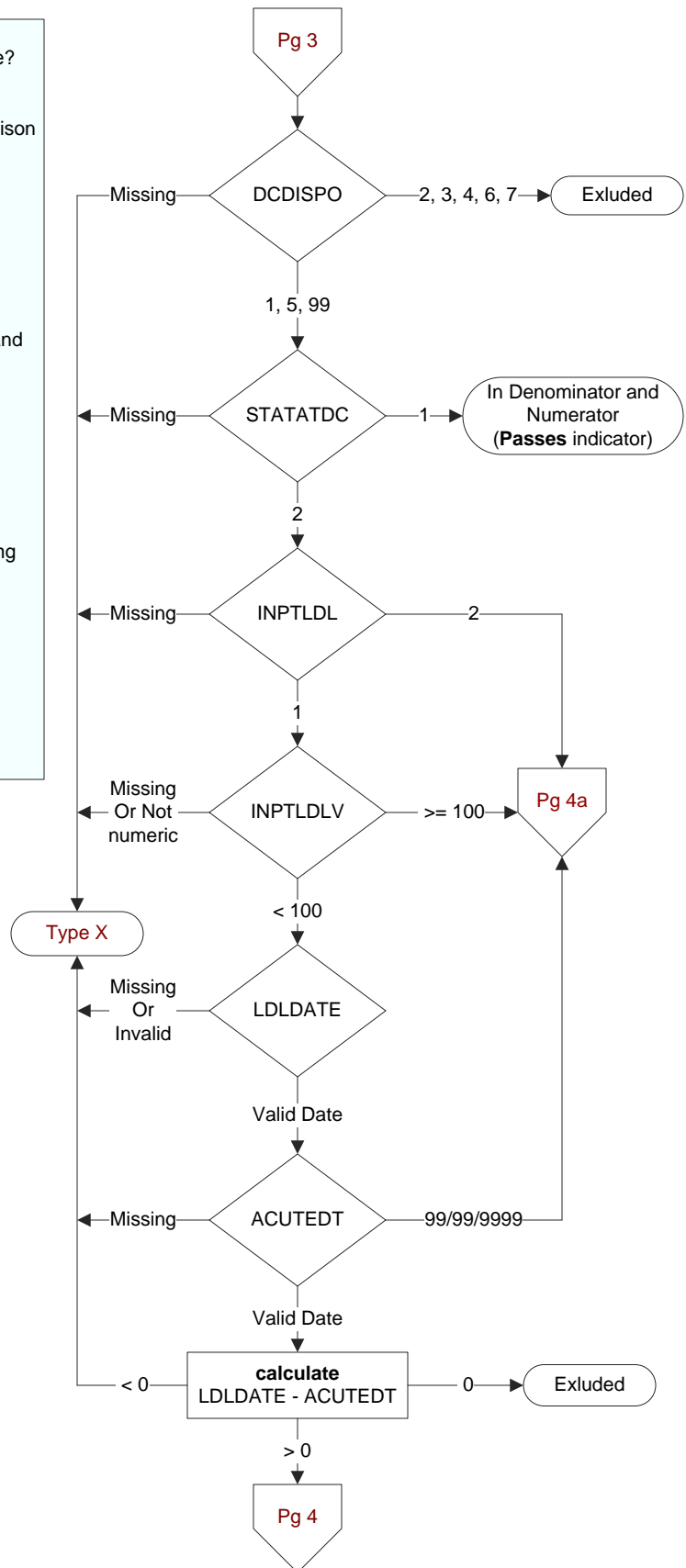
Enter the value of the first LDL-c in mg/dL or mg/100ml performed after hospital arrival.

LDLDATE (Hx & Assmt)

Enter the date of the first LDL-cholesterol done after hospital arrival.

ACUTEDT (Validation)

Enter the **earliest** documented date the patient arrived at this or another VAMC.



LDLTIME (Hx & Assmt)

Enter the time of the first LDL-cholesterol done after hospital arrival.

ACUTETM (Validation)

Enter the **earliest** documented time the patient arrived at this or another VAMC.

NOSTAWHY (Discharge)

Is there documentation of a reason for not prescribing a statin medication at discharge?

1. Statin medication allergy
95. Not applicable
97. Other reason documented by a physician/APN/PA or pharmacist for not prescribing a statin medication at discharge
98. Patient refusal of ALL statin medications documented by physician/APN/PA or pharmacist
99. No documented reason

