

**REVSTAT**

REVIEW STATUS (not abstracted)

- 0. Abstraction has not begun
- 1. Abstraction in progress
- 2. Abstraction completed w/o errors
- 3. TVG failure (exclusion)
- 4. Record contains missing required answers (error record)
- 5. Administrative exclusion from all measures

**CATNUM**

Sample category (received on pull list)

- 65. No VTE sub-population
- 66. Principal VTE sub-population
- 67. Secondary VTE sub-population

**AGE** (calculated field)

VTEADMDT - Patient date of birth

**VTEDCDT** (VTE)

Discharge Date

**VTEADMDT** (VTE)

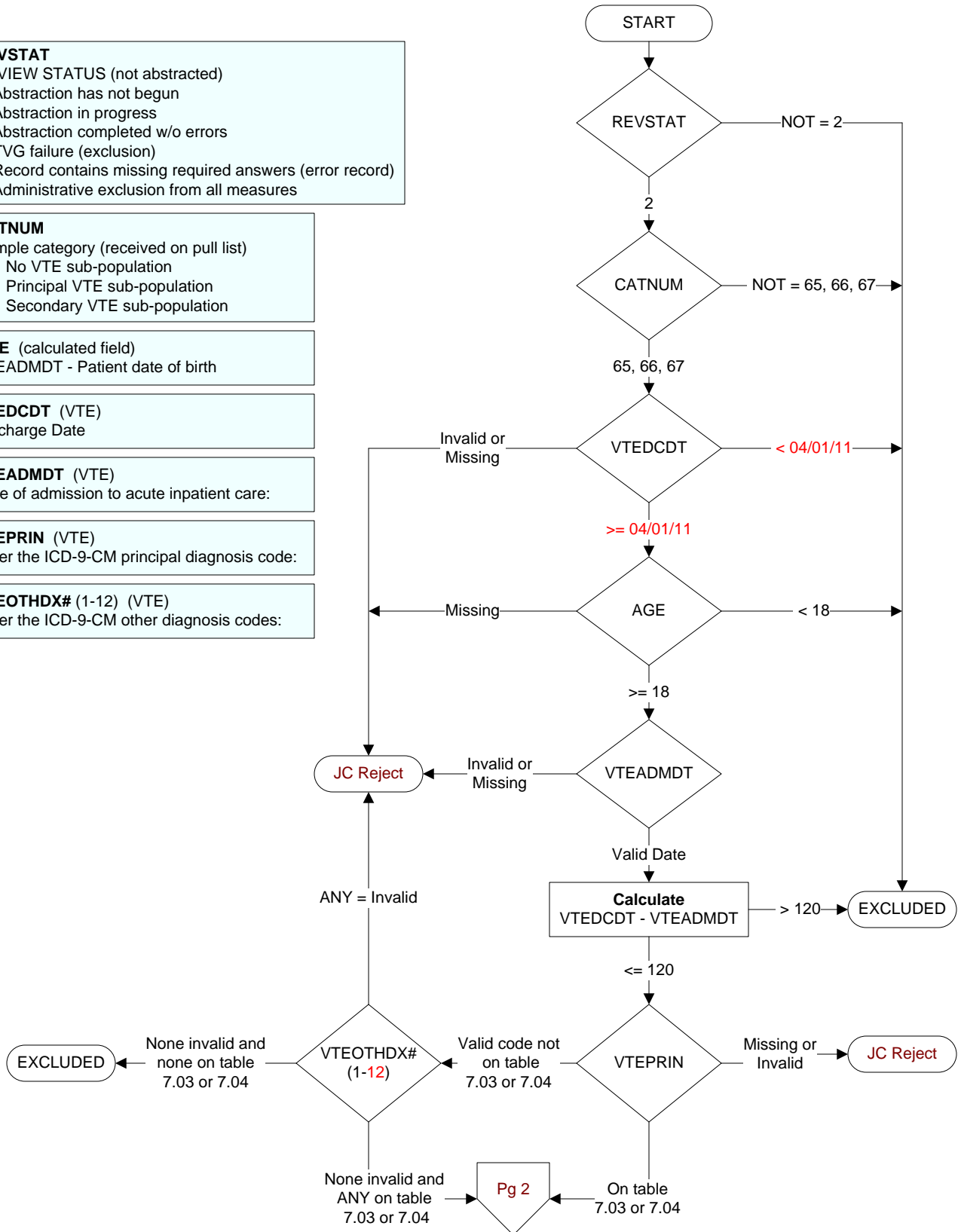
Date of admission to acute inpatient care:

**VTEPRIN** (VTE)

Enter the ICD-9-CM principal diagnosis code:

**VTEOHDX#** (1-12) (VTE)

Enter the ICD-9-CM other diagnosis codes:



**CLNTRIAL (VTE)**

During this hospital stay, was the patient enrolled in a clinical trial in which patients with venous thromboembolism (VTE) were being studied?

1. Yes
2. No

**VTETEST (VTE)**

Is there documentation that a diagnostic test for VTE was performed?

1. Yes
2. No

**POSVTE (VTE)**

Is there physician/APN/PA documentation that the patient had a diagnosis of VTE confirmed in one of the defined locations?

**VTE Location:** DVT located in the proximal leg veins, including the inferior vena cava (IVC), iliac, femoral or popliteal veins, or to pulmonary emboli (PE).

1. Yes
2. No or unable to determine from medical record documentation

**WARFRXDC (VTE)**

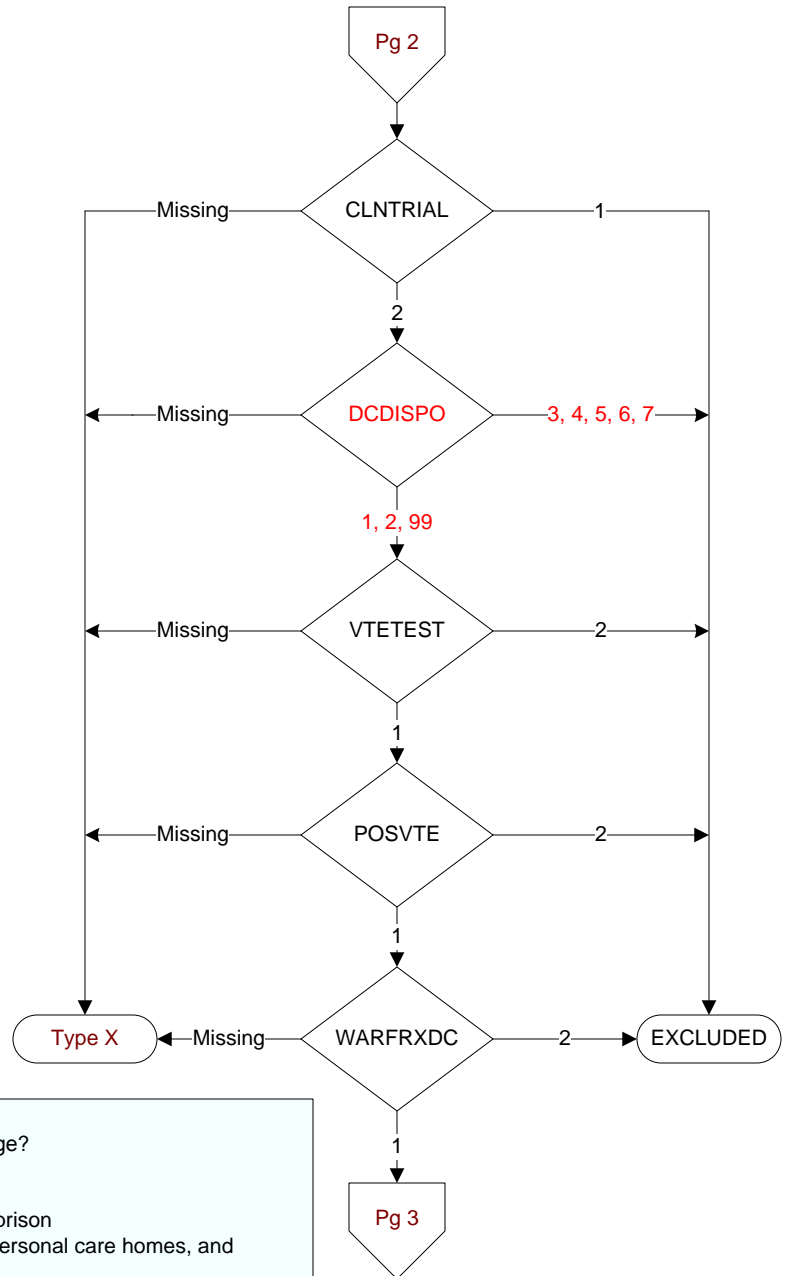
Is there documentation that warfarin was prescribed at discharge?

1. Yes
2. No

**DCDISPO (VTE)**

What was the patient's discharge disposition on the day of discharge?

1. Home
  - Assisted Living Facilities
  - Court/Law Enforcement – includes detention facilities, jails, and prison
  - Board and care, domiciliary, foster or residential care, group or personal care homes, and homeless shelters
  - Home with Home Health Services
  - Outpatient Services including outpatient procedures at another hospital, outpatient Chemical Dependency Programs and Partial Hospitalization
2. Hospice – Home
3. Hospice – Health Care Facility
  - General Inpatient and Respite, Residential and Skilled Facilities, and Other Health Care Facilities
4. Acute Care Facility
  - Acute Short Term General and Critical Access Hospitals
  - Cancer and Children's Hospitals
  - Department of Defense and Veteran's Administration Hospitals
5. Other Health Care Facility
  - Extended or Immediate Care Facility (ECF/ICF)
  - Long Term Acute Care Hospital (LTACH)
  - Nursing Home or Facility including Veteran's Administration Nursing Facility
  - Psychiatric Hospital or Psychiatric Unit of a Hospital
  - Rehabilitation Facility including Inpatient Rehabilitation Facility/Hospital or Rehabilitation Unit of a Hospital
  - Skilled Nursing Facility (SNF), Sub-Acute Care or Swing Bed
  - Transitional Care Unit (TCU)
6. Expired
7. Left Against Medical Advice/AMA
99. Not documented or unable to determine



**PTEDCOM (VTE)**

Did the WRITTEN discharge instructions or other educational material given to the patient/caregiver address compliance issues related to warfarin therapy prescribed after discharge?

1. Yes
2. No

**PTEDIET (VTE)**

Did the WRITTEN discharge instructions or other educational material given to the patient/caregiver address dietary advice related to warfarin therapy prescribed after discharge?

1. Yes
2. No

**PTEDFOLO (VTE)**

Did the WRITTEN discharge instructions or other educational material given to the patient/caregiver address follow-up monitoring related to warfarin therapy prescribed after discharge?

1. Yes
2. No

**PTEDADR (VTE)**

Did the WRITTEN discharge instructions or other educational material given to the patient/caregiver address potential for adverse drug reactions and interactions related to warfarin therapy prescribed after discharge?

1. Yes
2. No

