

REVSTAT

REVIEW STATUS (not abstracted)

- 0. Abstraction has not begun
- 1. Abstraction in progress
- 2. Abstraction completed w/o errors
- 3. TVG failure (exclusion)
- 4. Record contains missing required answers (error record)
- 5. Administrative exclusion from all measures

CATNUM

Sample category (received on pull list)

- 65. No VTE sub-population
- 66. Principal VTE sub-population
- 67. Secondary VTE sub-population

AGE - calculated field

VTEADMDT - Patient date of birth

VTEDCDT (VTE)

Discharge Date

VTEADMDT (VTE)

Date of admission to acute inpatient care:

VTEPRIN (VTE)

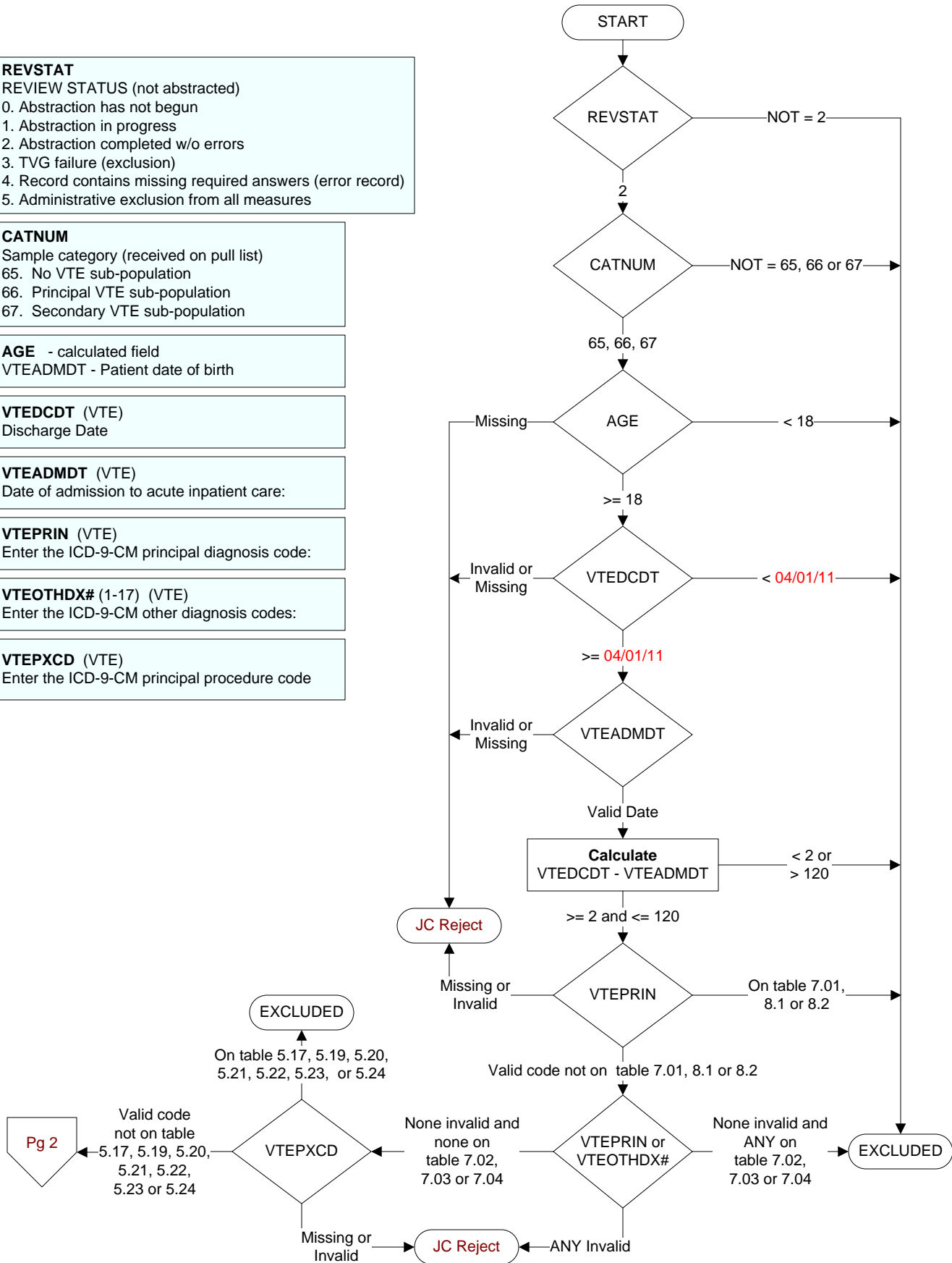
Enter the ICD-9-CM principal diagnosis code:

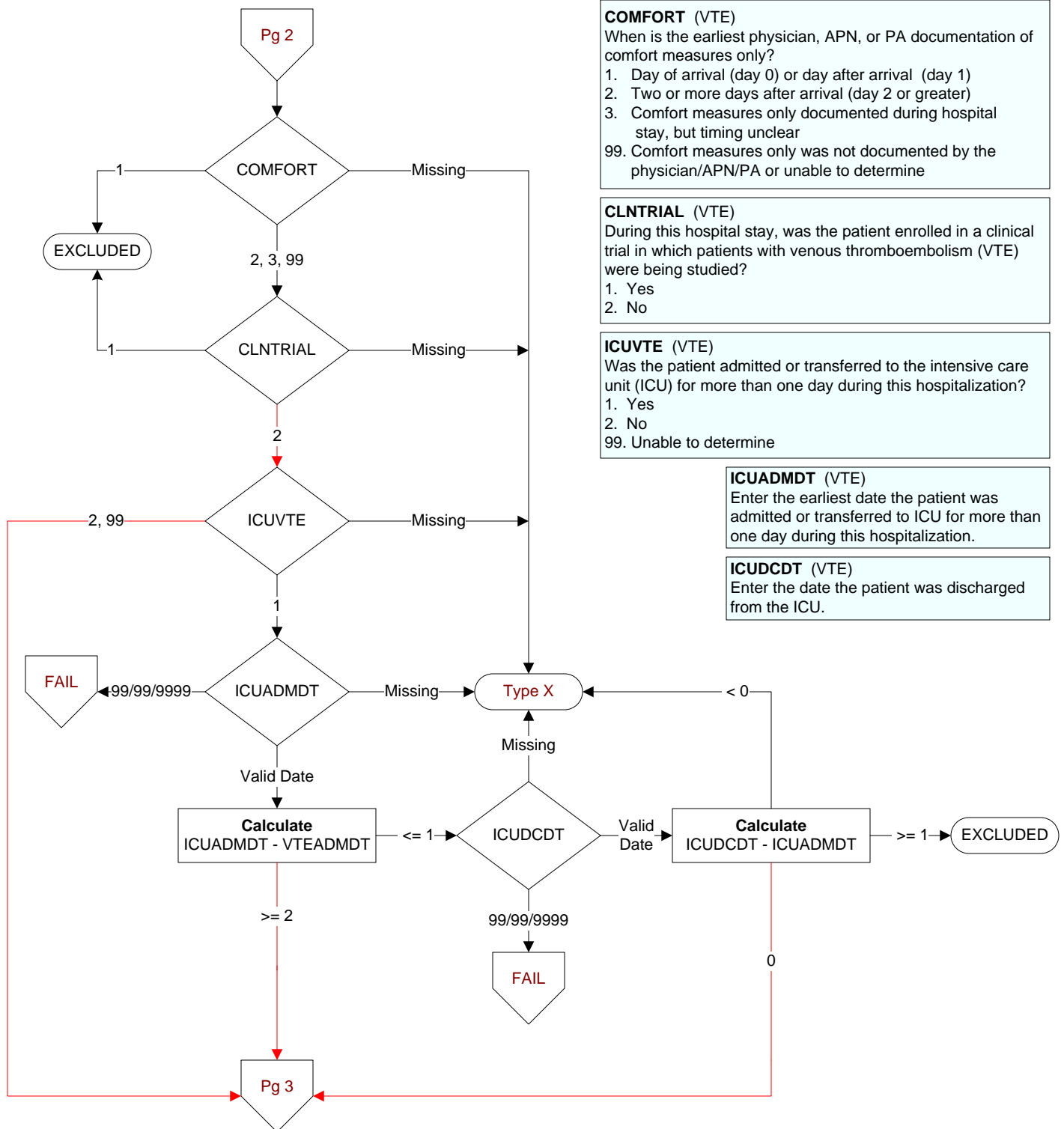
VTEOTHDX# (1-17) (VTE)

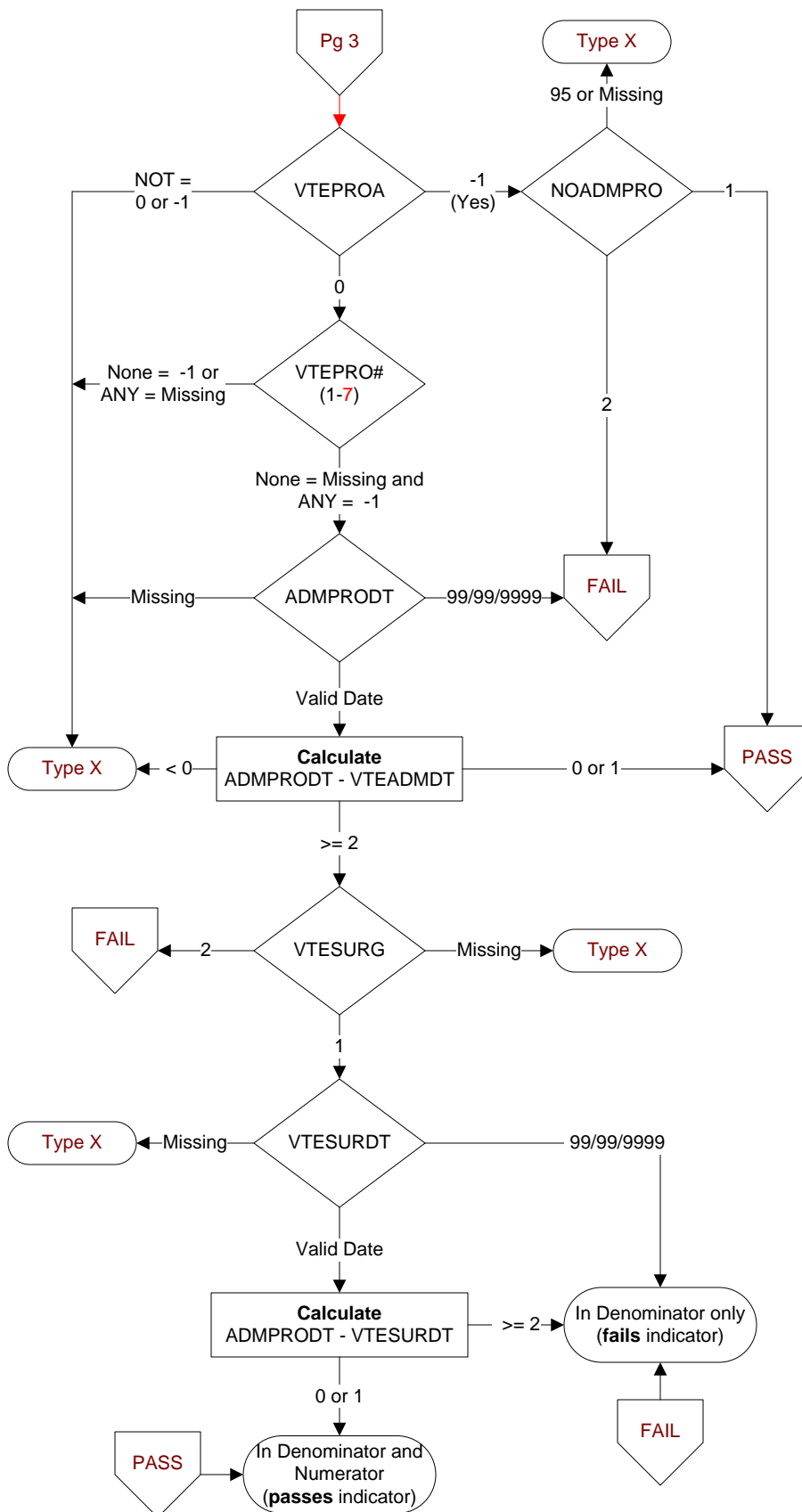
Enter the ICD-9-CM other diagnosis codes:

VTEPXCD (VTE)

Enter the ICD-9-CM principal procedure code







What type of VTE prophylaxis was administered during this hospitalization? (VTE)

Indicate all that apply:

- VTEPRO1.** Low dose unfractionated heparin (LDUH)
- VTEPRO2.** Low molecular weight heparin (LMWH)
- VTEPRO3.** Intermittent pneumatic compression devices
- VTEPRO4.** Graduated compression stockings (GCS)
- VTEPRO5.** Factor Xa Inhibitor
- VTEPRO6.** Warfarin
- VTEPRO7.** Venous foot pumps (VFP)
- VTEPROA** None of the above or unable to determine from medical record documentation

NOADMPRO (VTE)

Is there documentation of a reason VTE prophylaxis was not administered the day of or day after hospital admission (or day of surgery or day after surgery end date)?

- 1. Yes
- 2. No
- 95. Not applicable

ADMPRODT (VTE)

Enter the date the initial VTE prophylaxis was administered during this hospitalization.

VTESURG (VTE)

Was a surgical procedure performed using general or neuraxial anesthesia the day of or the day after hospital admission?

- 1. Yes
- 2. No

VTESURDT (VTE)

Enter the surgery end date.