**PHQ2DT (MH)**

Enter the date of the most recent screening for depression by the PHQ-2 or PHQ-9.

SCRNP HQ (MH)

On the date of the most recent screening for depression, was the patient screened by the PHQ-2 or the PHQ-9?

2. Screened by PHQ-2
3. Screened by PHQ-9
4. Screened by PHQ-2 AND PHQ-9 on the same date

PH1SCOR (MH)

Enter the score for PHQ-2 Question 1 documented in the record:
Over the past 2 weeks, have you been bothered by little interest or pleasure in doing things?

0. Not at all --> 0
1. Several days --> 1
2. More than half the days --> 2
3. Nearly every day --> 3
95. Not applicable
99. No answer documented

PH2SCOR (MH)

Enter the score for PHQ-2 Question 2 documented in the record:
Over the past 2 weeks, have you been bothered by feeling down, depressed, or hopeless?

0. Not at all --> 0
1. Several days --> 1
2. More than half the days --> 2
3. Nearly every day --> 3
95. Not applicable
99. No answer documented

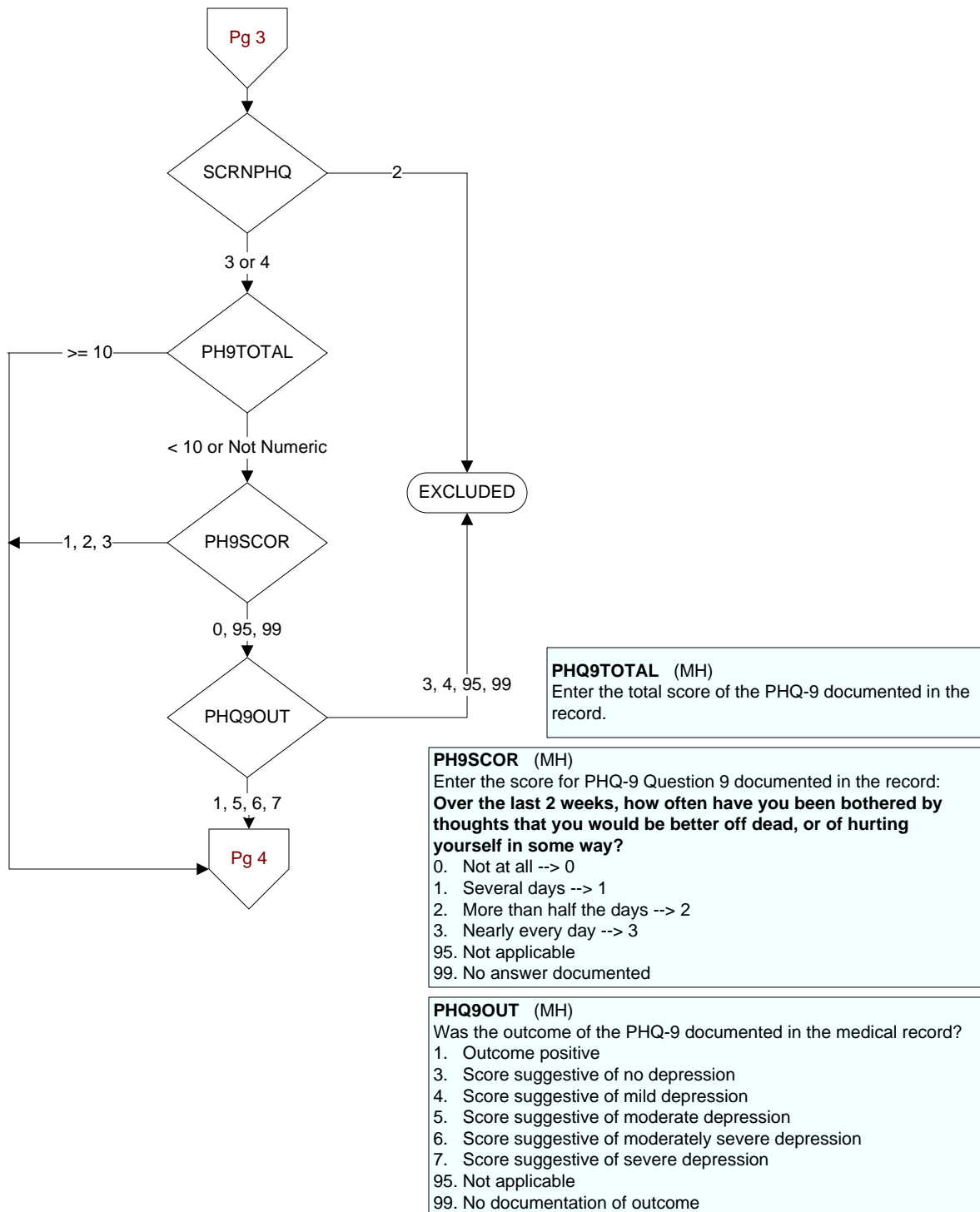
PHQTOTAL (MH)

Enter the total score for the **PHQ-2** documented in the medical record.

OUTCOME3 (MH)

What was the outcome of the PHQ-2 documented in the record?

1. Outcome positive (suggestive of depression)
2. Outcome negative (no indication of depression)
95. Not applicable
99. Outcome not documented



DEPEVAL (MH)

Following the positive PHQ-2 or PHQ-9 or affirmative answer to PHQ-9 question 9, did the provider document the patient needed further intervention?

1. Yes, documented further intervention needed
2. Documented no further intervention needed
99. No documentation regarding further intervention

NODEPINT (MH)

Following the positive PHQ-2 or PHQ-9 or affirmative answer to PHQ-9 question 9, did the provider document the patient refused further evaluation/treatment for depression?

1. Yes
2. No

DEPCARE (MH)

Following the positive PHQ-2 or PHQ-9 or affirmative answer to PHQ-9 question 9, did the provider document the patient was already receiving recommended care for depression?

1. Yes
2. No

DECAROUT (MH)

Following the positive PHQ-2 or PHQ-9 or affirmative answer to PHQ-9 question 9, did the provider document the patient was to receive care for depression outside this VA?

1. Yes
2. No

DEPMHEVL (MH)

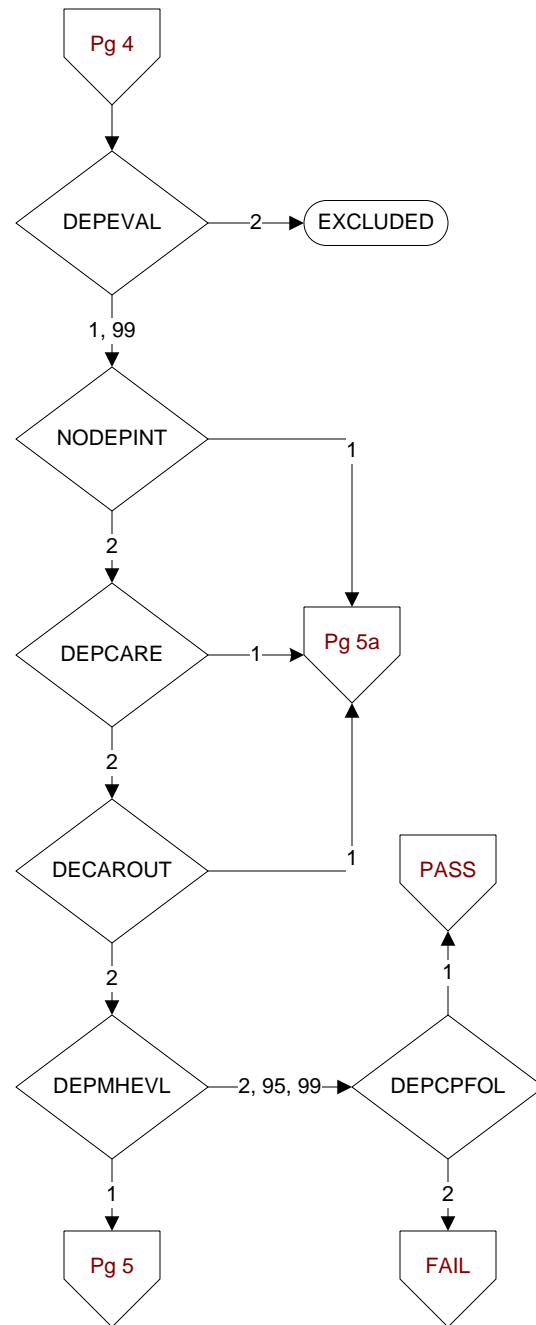
Following the positive PHQ-2 or PHQ-9 or affirmative answer to PHQ-9 question 9, did the provider document that the patient needed a mental health evaluation?

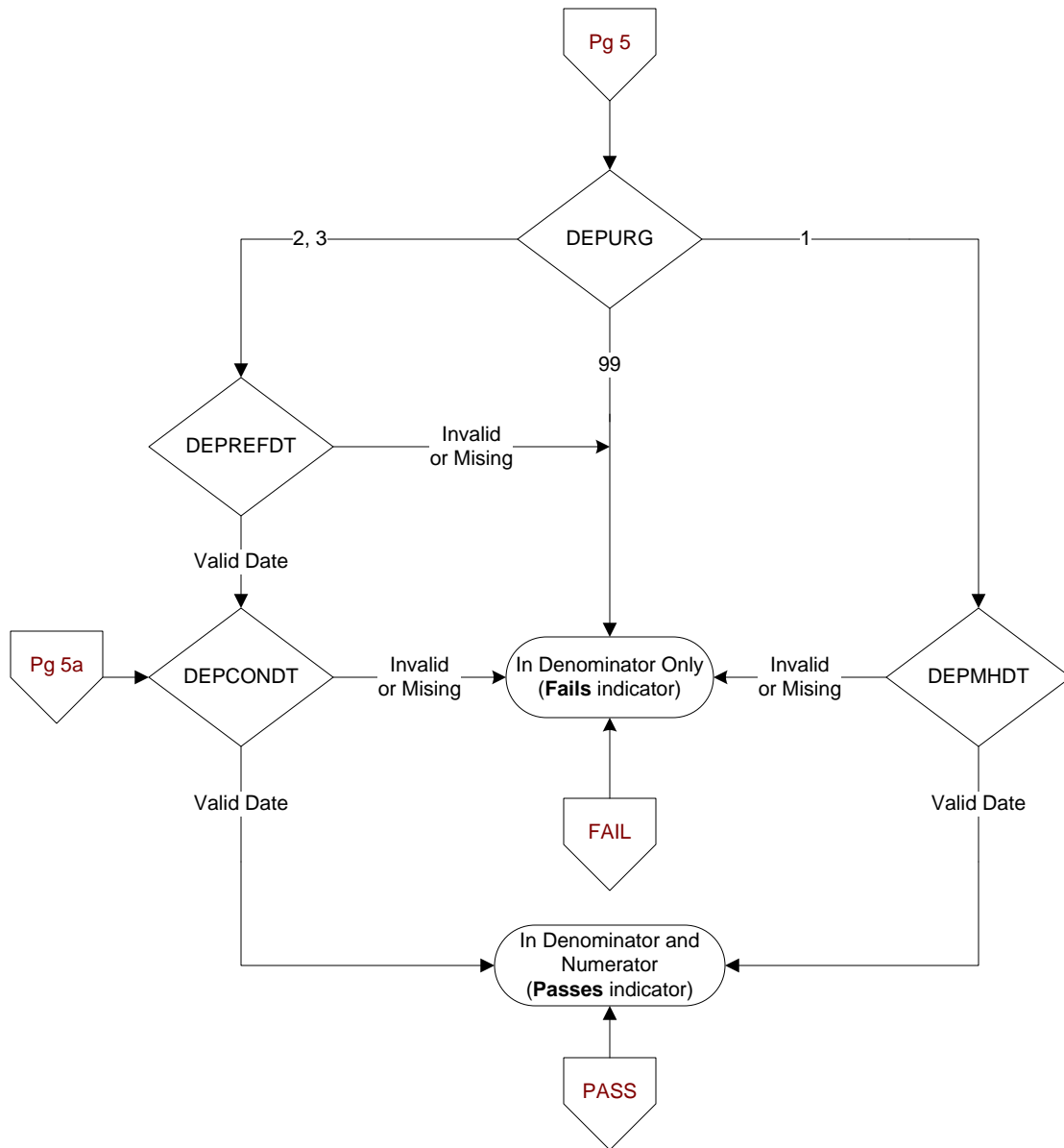
1. Yes, mental health evaluation needed
2. No mental health evaluation needed
99. No documentation regarding mental health evaluation

DEPCPFOL (MH)

Did the licensed independent provider document that the patient will follow-up with a primary care provider?

1. Yes
2. No



**DEPURG (MH)**

Following the positive PHQ-2 or PHQ-9 or affirmative answer to question 9, did the provider document the urgency of the mental health evaluation?

1. Immediate/emergent mental health evaluation needed
2. Urgent mental health evaluation needed
3. Non-urgent mental health evaluation needed
99. No documentation of urgency of care

DEPMHDT (MH)

Enter the date the patient was emergently transferred to mental health care services.

DEPREFDT (MH)

Enter the date the mental health consult was placed.

DEPCONDT (MH)

Enter the date the provider documented contact information was provided to the patient.