

REVSTAT

REVIEW STATUS (not abstracted)

- 0. Abstraction has not begun
- 1. Abstraction in progress
- 2. Abstraction completed w/o errors
- 3. TVG failure (exclusion)
- 4. Record contains missing required answers (error record)
- 5. Administrative exclusion from all measures

APROCODE (Validation)

Enter the ICD-9-CM principal diagnosis code

DCDATE (Validation)

Enter the date of discharge. (received on pull list and may not be modified)

ADMDT (Validation)

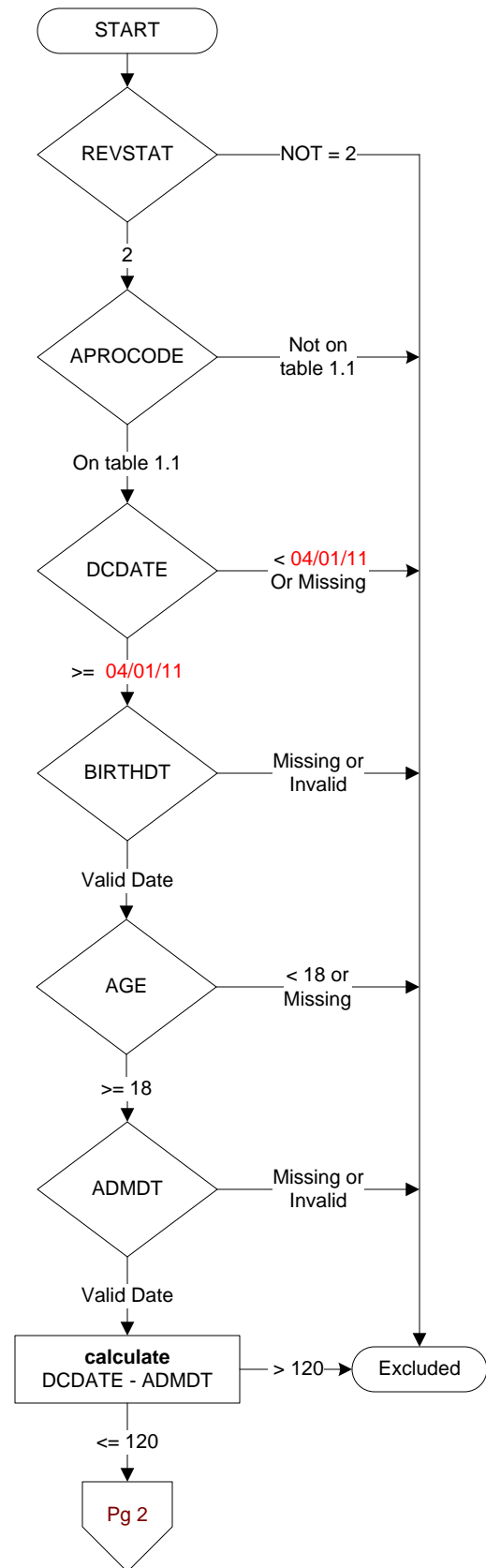
Enter the date the patient was formally admitted to inpatient status at this VAMC.

BIRTHDT (rcvd on pull list)

Patients date of birth.

AGE

calculated field: ADMDT - BIRTHDT



COMFORT (Validation)

When is the earliest physician, APN, or PA documentation of comfort measures only?

1. Day of arrival (day 0) or day after arrival (day 1)
2. Two or more days after arrival (day 2 or greater)
3. Comfort measures only documented during hospital stay, but timing unclear
99. Comfort measures only was not documented by the physician/APN/PA or unable to determine

CLNTRIAL (Validation)

Was the patient involved in a clinical trial for Acute Myocardial Infarction during this hospital stay?

- 1 = Yes
- 2 = No

DCDISPO (Validation)

What was the patient's discharge disposition on the day of discharge?

1. Home
 - Assisted Living Facilities
 - Court/Law Enforcement – includes detention facilities, jails, and prison
 - Board and care, domiciliary, foster or residential care, group or personal care homes, and homeless shelters
 - Home with Home Health Services
 - Outpatient Services including outpatient procedures at another hospital, outpatient Chemical Dependency Programs and Partial Hospitalization
2. Hospice – Home
3. Hospice – Health Care Facility
 - General Inpatient and Respite, Residential and Skilled Facilities, and Other Health Care Facilities
4. Acute Care Facility
 - Acute Short Term General and Critical Access Hospitals
 - Cancer and Children's Hospitals
 - Department of Defense and Veteran's Administration Hospitals
5. Other Health Care Facility
 - Extended or Immediate Care Facility (ECF/ICF)
 - Long Term Acute Care Hospital (LTACH)
 - Nursing Home or Facility including Veteran's Administration Nursing Facility
 - Psychiatric Hospital or Psychiatric Unit of a Hospital
 - Rehabilitation Facility including Inpatient Rehabilitation Facility/Hospital or Rehabilitation Unit of a Hospital
 - Skilled Nursing Facility (SNF), Sub-Acute Care or Swing Bed
 - Transitional Care Unit (TCU)
6. Expired
7. Left Against Medical Advice/AMA
99. Not documented or unable to determine

LIPIDMED (Hx & Assmt)

Is there documentation that the patient was on a lipid-lowering medication prior to hospital arrival?

1. Yes
2. No

INPTLDL (Hx & Assmt)

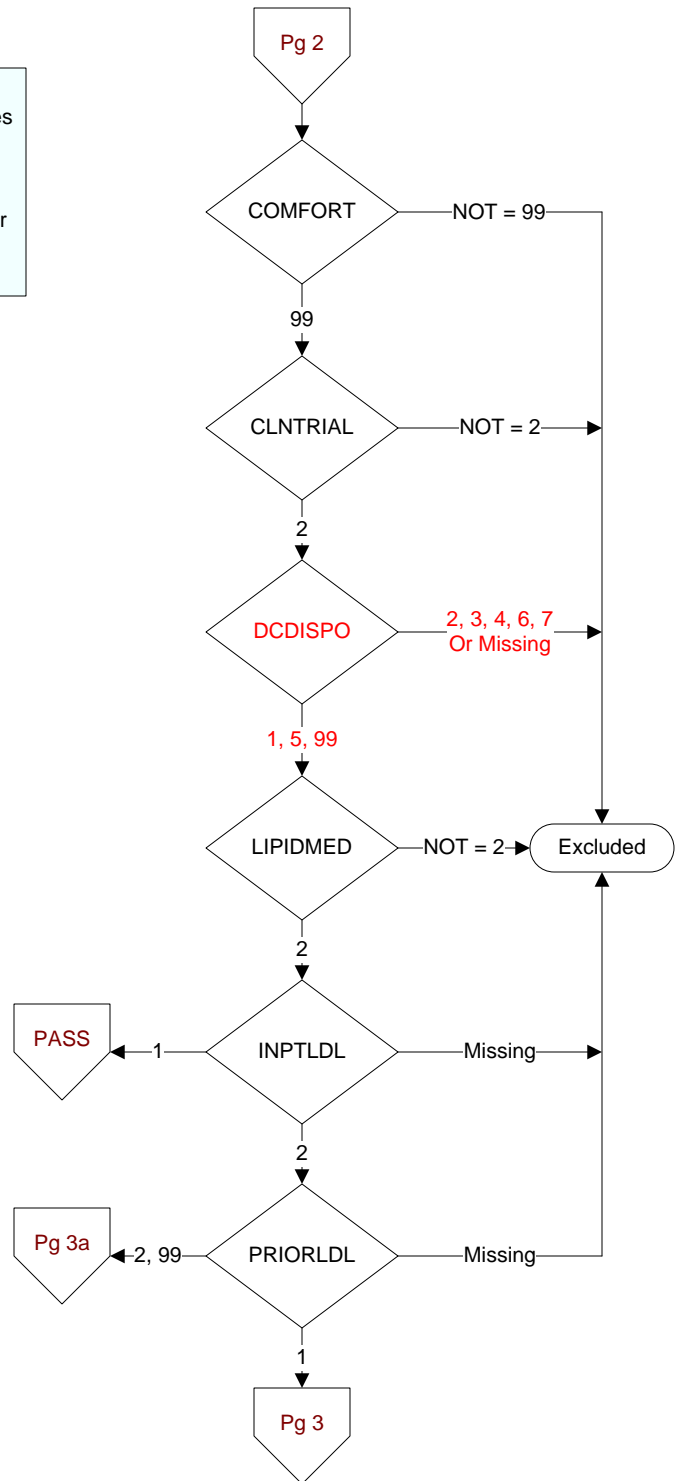
Was an LDL-cholesterol (LDL-c) test in mg/dL (or mg/100ml) performed during this hospital stay?

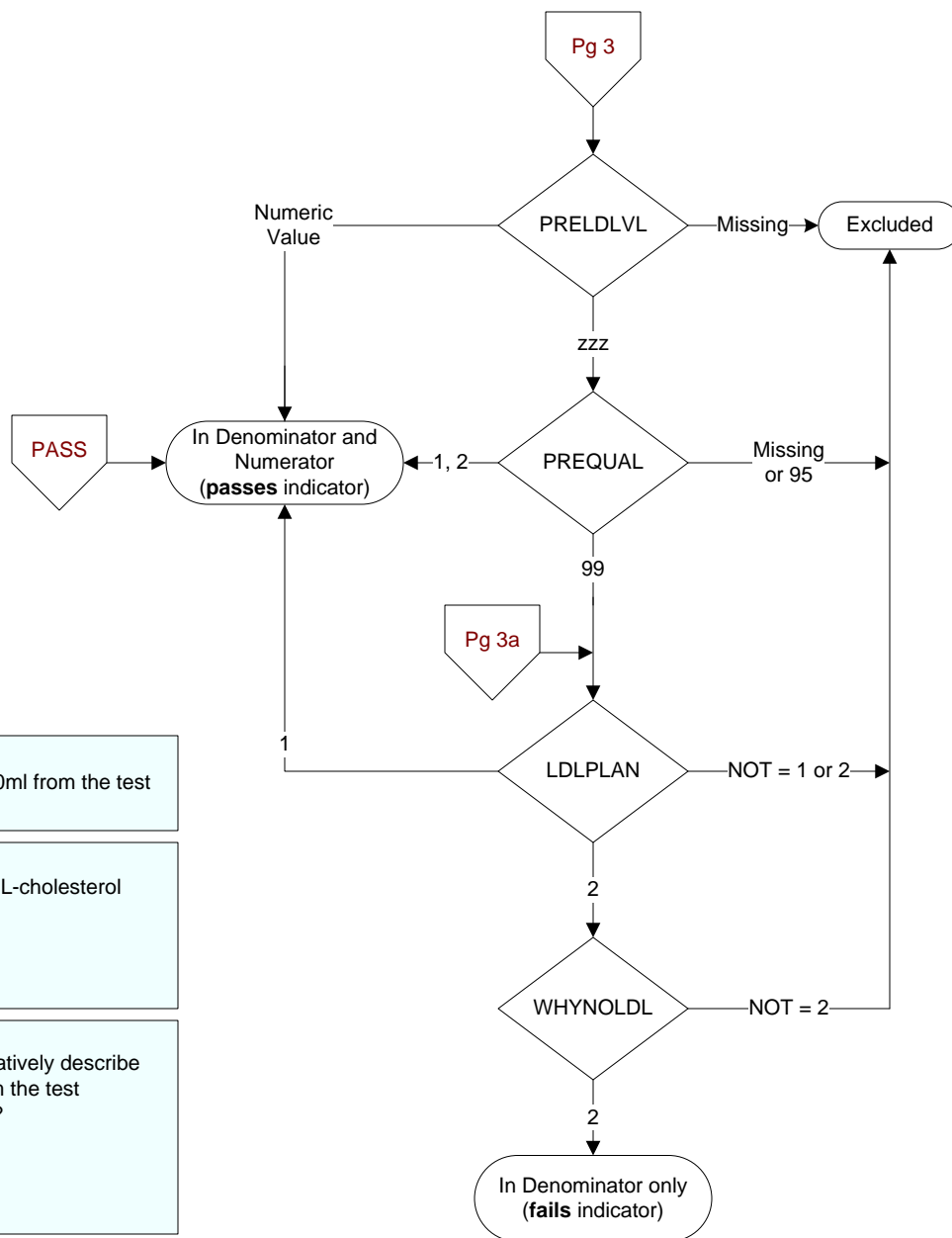
1. yes
2. no

PRIORLDL (Hx & Assmt)

Does the record document an LDL-cholesterol (LDL-c) test in mg/dL or mg/100ml was performed within one year prior to acute care arrival?

1. Yes
2. No
99. Not documented/unable to determine





PREDLVL (Hx & Assmt)
Enter the LDL-c value in mg/dL or mg/100ml from the test performed within one year prior to arrival.

LDLPLAN (Hx & Assmt)
Is there documentation of a plan to do LDL-cholesterol testing after discharge?
1. Yes
2. No
95. Not applicable

PREQUAL (Hx & Assmt)
How did the physician, APN, or PA qualitatively describe the patient's LDL-cholesterol (LDL-c) from the test performed within one year prior to arrival?
1. Elevated LDL-c
2. No elevated LDL-c
95. Not applicable
99. Not documented

WHYNOLDL (Hx & Assmt)
Is there a reason documented by a physician, APN, or PA for not doing LDL-cholesterol (LDL-c) testing?
1. Yes
2. No
95. Not applicable