

REVSTAT

REVIEW STATUS (not abstracted)

- 0. Abstraction has not begun
- 1. Abstraction in progress
- 2. Abstraction completed w/o errors
- 3. TVG failure (exclusion)
- 4. Record contains missing required answers (error record)
- 5. Administrative exclusion from all measures

CATNUM

Sample category (received on pull list)

- 65. No VTE sub-population
- 66. Principal VTE sub-population
- 67. Secondary VTE sub-population

AGE (calculated field)

VTEADMDT - Patient date of birth

VTEDCDT (VTE)

Discharge Date

VTEADMDT (VTE)

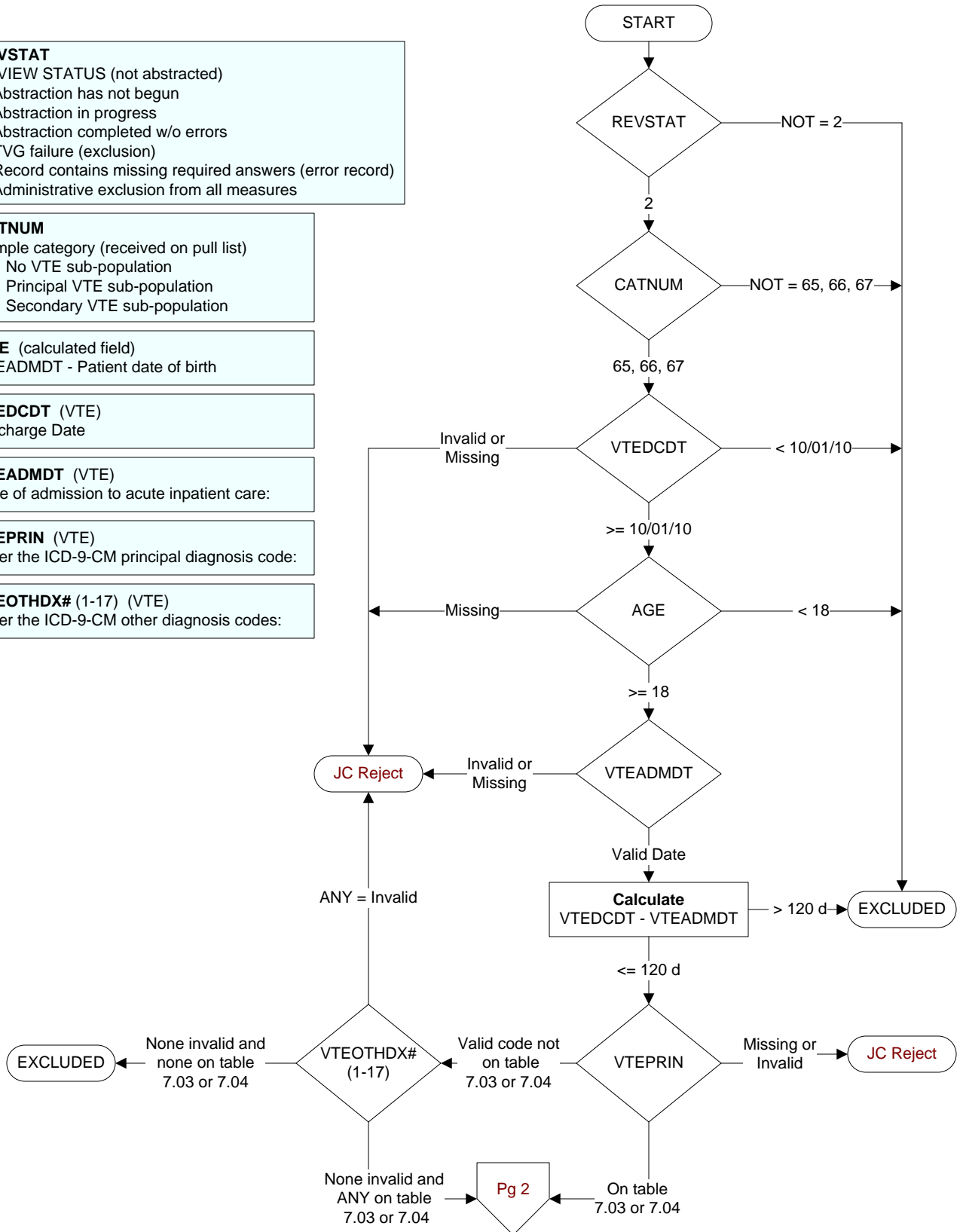
Date of admission to acute inpatient care:

VTEPRIN (VTE)

Enter the ICD-9-CM principal diagnosis code:

VTEOHDX# (1-17) (VTE)

Enter the ICD-9-CM other diagnosis codes:



COMFORT (VTE)

When is the earliest physician, APN, or PA documentation of comfort measures only?

1. Day of arrival (day 0) or day after arrival (day 1)
2. Two or more days after arrival (day 2 or greater)
3. Comfort measures only documented during hospital stay, but timing unclear
99. Comfort measures only was not documented by the physician/APN/PA or unable to determine

CLNTRIAL (VTE)

During this hospital stay, was the patient enrolled in a clinical trial in which patients with venous thromboembolism (VTE) were being studied?

1. Yes
2. No

VTETEST (VTE)

Is there documentation that a diagnostic test for VTE was performed?

1. Yes
2. No

POSVTE (VTE)

Is there physician/APN/PA documentation that the patient had a diagnosis of VTE confirmed in one of the defined locations?

VTE Location: DVT located in the proximal leg veins, including the inferior vena cava (IVC), iliac, femoral or popliteal veins, or to pulmonary emboli (PE).

1. Yes
2. No or unable to determine from medical record documentation

ADMIVHEP (VTE)

Is there documentation that intravenous (IV) unfractionated heparin was administered within the timeframe of 2 days prior to 2 days after the date the VTE was confirmed?

1. Yes
2. No

MGTHEPTX (VTE)

Is there documentation that the IV unfractionated heparin AND platelet counts were managed by defined parameters using a protocol (or nomogram)?

1. Yes
2. No
95. Not applicable

