

CATNUM

Sample category

16. AMI - Outpatient visit	57. OEF/OIF scrnd TBI+
36. SCI Dx	60. DM Outpatient
48. Female, age 20-69	61. Inpatient SCI
50. Random Sample	64. CHF Outpatient
51. Random Sample MH	68. Contract CBOC
54. Frail/Elderly	

REVSTAT

REVIEW STATUS (not abstracted)

0. Abstraction has not begun
 1. Abstraction in progress
 2. Abstraction completed w/o errors
 3. TVG failure (exclusion)
 4. Record contains missing required answers (error record)
 5. Administrative exclusion from all measures

DOCHOSPCE (PI module)Is one of the following documented in the medical record:

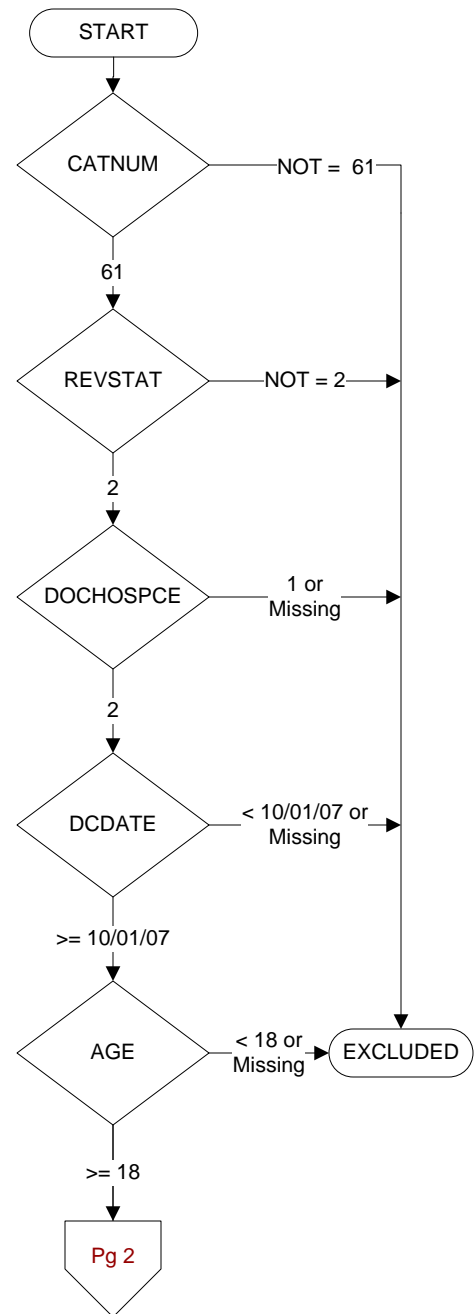
- the patient is enrolled in a VHA or community-based Hospice program
- the patient has a diagnosis of cancer of the liver, pancreas, or esophagus
- on the problem list it is documented the patient's life expectancy is less than 6 months?

DCDATE (Validation)

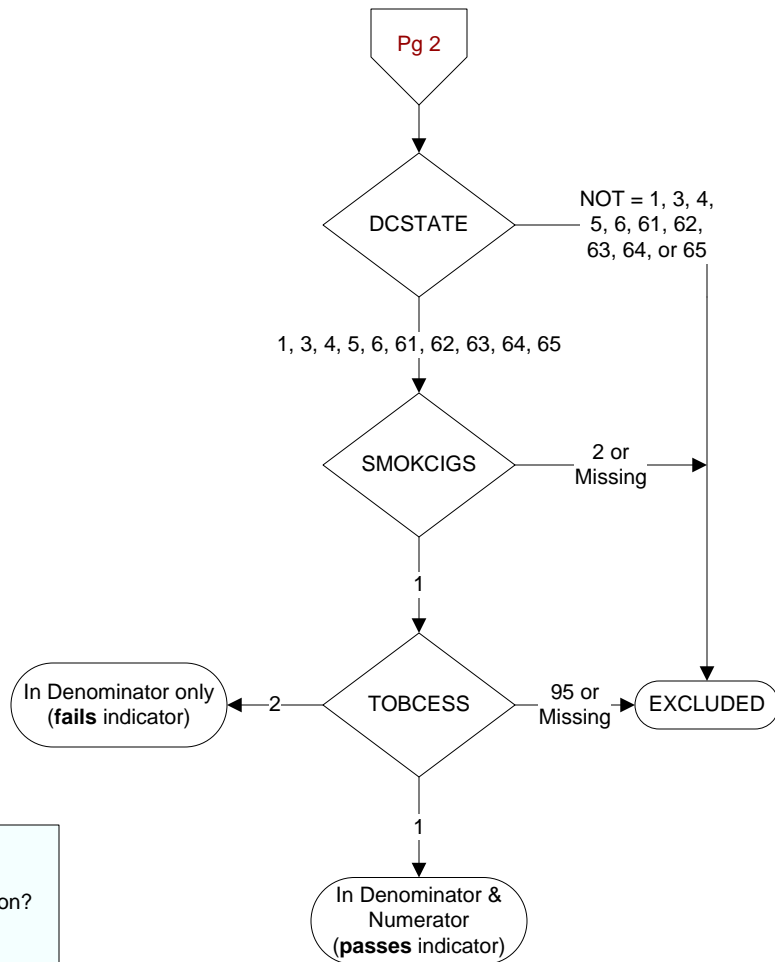
Enter the date of discharge.

AGE (Calculated field)

NEXUSDT - BIRTHDT (clinic visit date - date of birth)
 or
 If CATNUM = 61 and no NEXUS visit then ADMDT - BIRTHDT



Pg 2

**SMOKCIGS** (PI Module)

Did the adult patient smoke cigarettes any time during the year prior to hospital arrival?

1. Yes
2. No or unable to determine from medical record documentation

TOBCESS (PI Module)

Did the patient/caregiver receive smoking/tobacco use cessation advice or counseling during the hospitalization?

1. Yes
2. No
95. Not applicable

DCSTATE (Validation)

Enter the patient's discharge disposition:

1. discharged to home care or self care (routine discharge)
2. discharged/transferred to a short term general hospital for inpatient care
3. discharged/transferred to a skilled nursing facility (SNF) with Medicare certification, **in anticipation of covered skilled care**
4. discharged/transferred to a facility that provides custodial or supportive care
5. discharged/transferred to a Designated Cancer Center or Children's Hospital
6. discharged/transferred to home **under care of organized home health service organization, in anticipation of covered skilled care.**
7. left against medical advice or discontinued care
20. expired
21. Discharged/transferred to court/law enforcement (includes transfers to incarceration facilities such as jail, prison, or other detention facilities)
43. Discharged/transferred to a federal health care facility
50. hospice – home
51. hospice – medical facility (certified) providing hospice level of care
61. discharged/transferred to hospital-based Medicare approved swing bed
62. Discharged/transferred to inpatient rehabilitation facility (IRF) including rehabilitation distinct parts of a hospital
63. Discharged/transferred to a Medicare certified long-term care hospital
64. Discharged/transferred to a nursing facility certified under Medicaid but not certified under Medicare
65. Discharged/transferred to a psychiatric hospital or psychiatric distinct part unit of a hospital
66. Discharged/transferred to a Critical Access Hospital (CAH)
70. Discharged/transferred to another Type of Health Care Institution not Defined Elsewhere in this Code List