

REVSTAT
 REVIEW STATUS (not abstracted)
 0. Abstraction has not begun
 1. Abstraction in progress
 2. Abstraction completed w/o errors
 3. TVG failure (exclusion)
 4. Record contains missing required answers (error record)
 5. Administrative exclusion from all measures

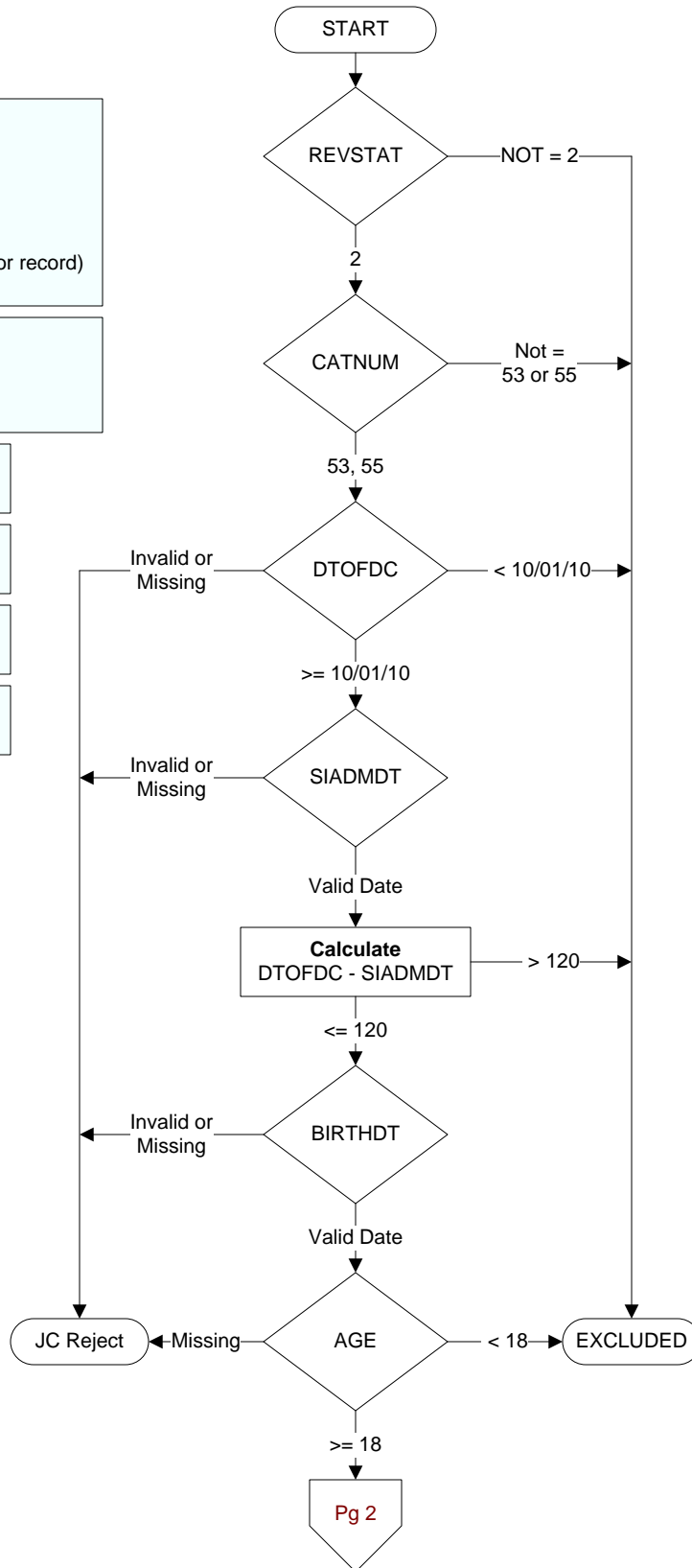
CATNUM
 Sample category
 53. Surgical Care
 55. Type 10 Surgery Cases

SIADMDT (SCIP)
 Date of admission to inpatient care:

BIRTHDT
 Patient date of birth. Received on pull list.

DTOFDC (SCIP)
 Discharge Date

AGE
 Calculated field = SIADMDT - BIRTHDT



PRINPX (SCIP)
Enter the ICD-9-CM principal procedure code and date the procedure was performed
(date is stored in PRINPXDT)

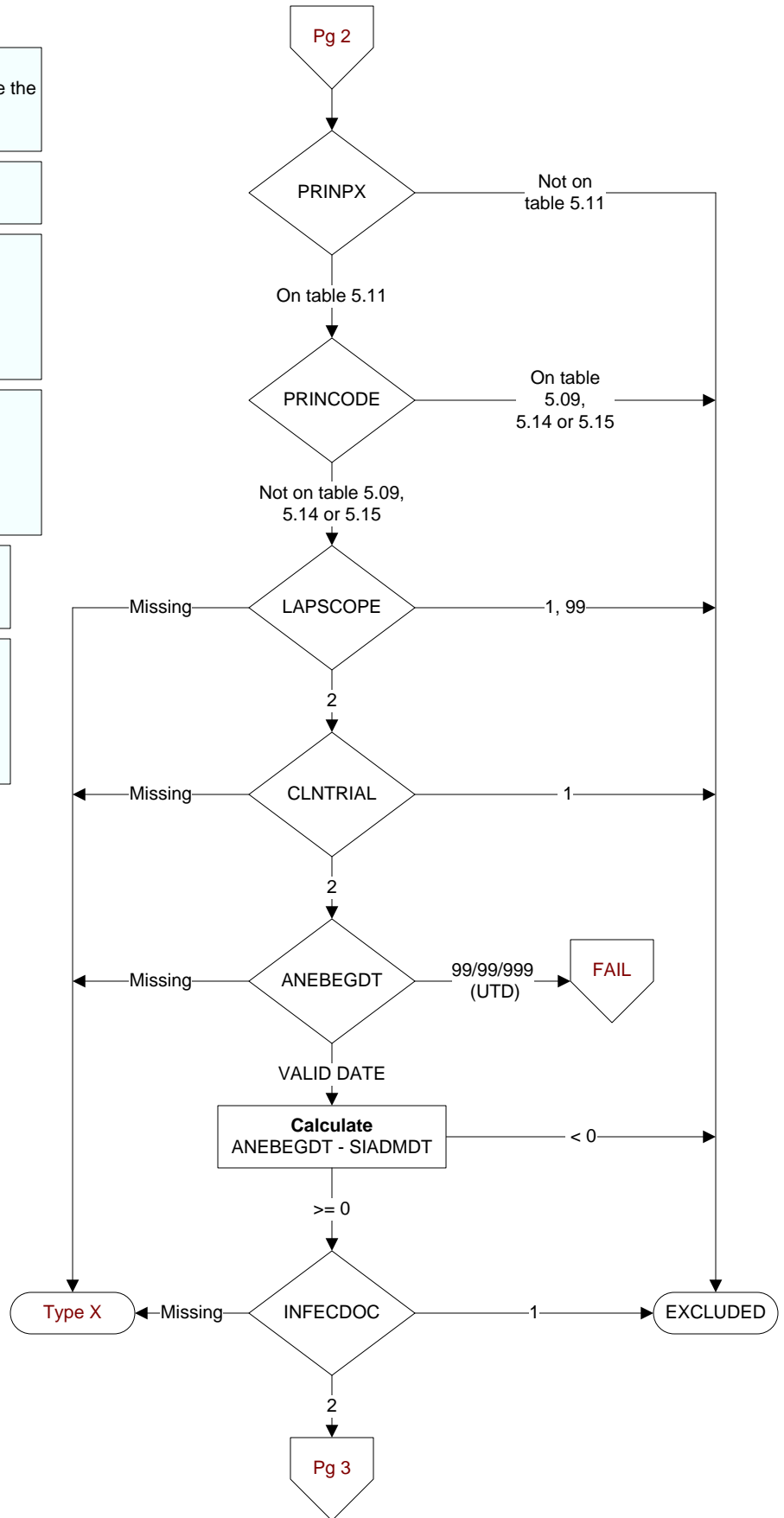
PRINCODE (SCIP)
Enter the ICD-9-CM principal diagnosis code:

LAPSCOPE (SCIP)
Was the principal procedure performed entirely by laparoscope or other fiber optic scope?
1. Yes
2. No
99. Unable to determine

CLNTRIAL (SCIP)
During this hospital stay, was the patient enrolled in a clinical trial in which patients undergoing surgery were being studied?
1. Yes
2. No

ANEBEGDT (SCIP)
Enter the date the anesthesia was started for the principal procedure.

INFECDOC (SCIP)
Did the patient have an infection during this hospitalization prior to the principal procedure?
(Requires Physician, APN, or PA documentation)
1 = Yes
2 = No



PERIEXPR (SCIP)

Is there documentation that the patient expired during the timeframe from surgical incision through discharge from the post anesthesia care/ recovery area?

1. Yes
2. No
95. Not applicable

ANESENDT (SCIP)

Enter the date the anesthesia ended for the principal procedure

GLUCOLVL (SCIP)

Enter the serum glucose level drawn closest to 6:00 AM on post-op day one.

GLUC2LVL (SCIP)

Enter the serum glucose level drawn closest to 6:00 AM on post-op day two.

