

CATNUM

Sample category

16. AMI - Outpatient visit	57. OEF/OIF scrnd TBI+
36. SCI Dx	60. DM Outpatient
48. Female, age 20-69	61. Inpatient SCI
50. Random Sample	64. CHF Outpatient
51. Random Sample MH	68. Contract CBOC
54. Frail/Elderly	

FEFLAG (rcvd on pull list)

FE case flagged for CGPI review / scoring?

0. No
1. Yes

REVSTAT

REVIEW STATUS (not abstracted)

0. Abstraction has not begun
1. Abstraction in progress
2. Abstraction completed w/o errors
3. TVG failure (exclusion)
4. Record contains missing required answers (error record)
5. Administrative exclusion from all measures

MODSEVCI (MH)

Within the past year, did the clinician document in the record that the patient has moderate or severe cognitive impairment?

1. Yes
2. No

COGSCOR (MH)

What was the outcome of the screen for cognitive impairment?

4. Score indicated mild cognitive impairment
5. Score indicated moderate to severe impairment
6. Score indicated no cognitive impairment
95. Not applicable
99. No score documented in the record or unable to determine outcome

DEMENTDX (MH)

During the past year, does the record document a diagnosis of dementia as evidenced by one of the following ICD-9-CM codes?

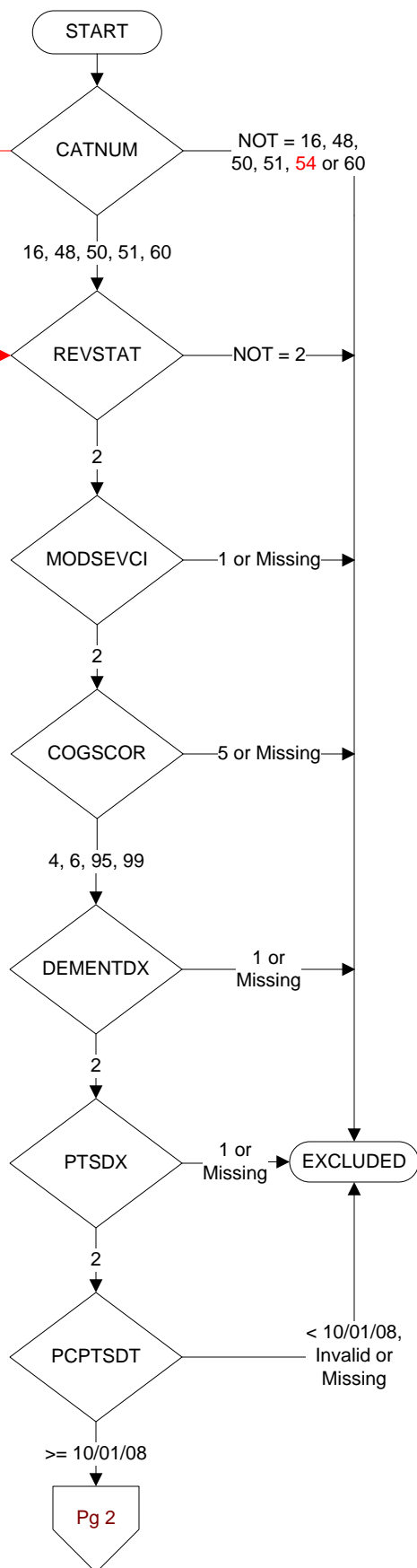
-- Dementia (290.XX)
-- Alcohol-induced persisting amnesic disorder (291.1)
-- Alcohol-induced persisting dementia (291.2)
-- Dementia in conditions classified elsewhere (294.XX)

1. Yes
2. No

PTSDX (MH)

Within the past year, did the patient have at least one clinical encounter where PTSD was identified as a reason for the clinical encounter as evidenced by ICD-9-CM code 309.81?

1 = Yes
2 = No

PCPTSDT (MH)Enter the date of the most recent screen for PTSD using the PC-PTSD.

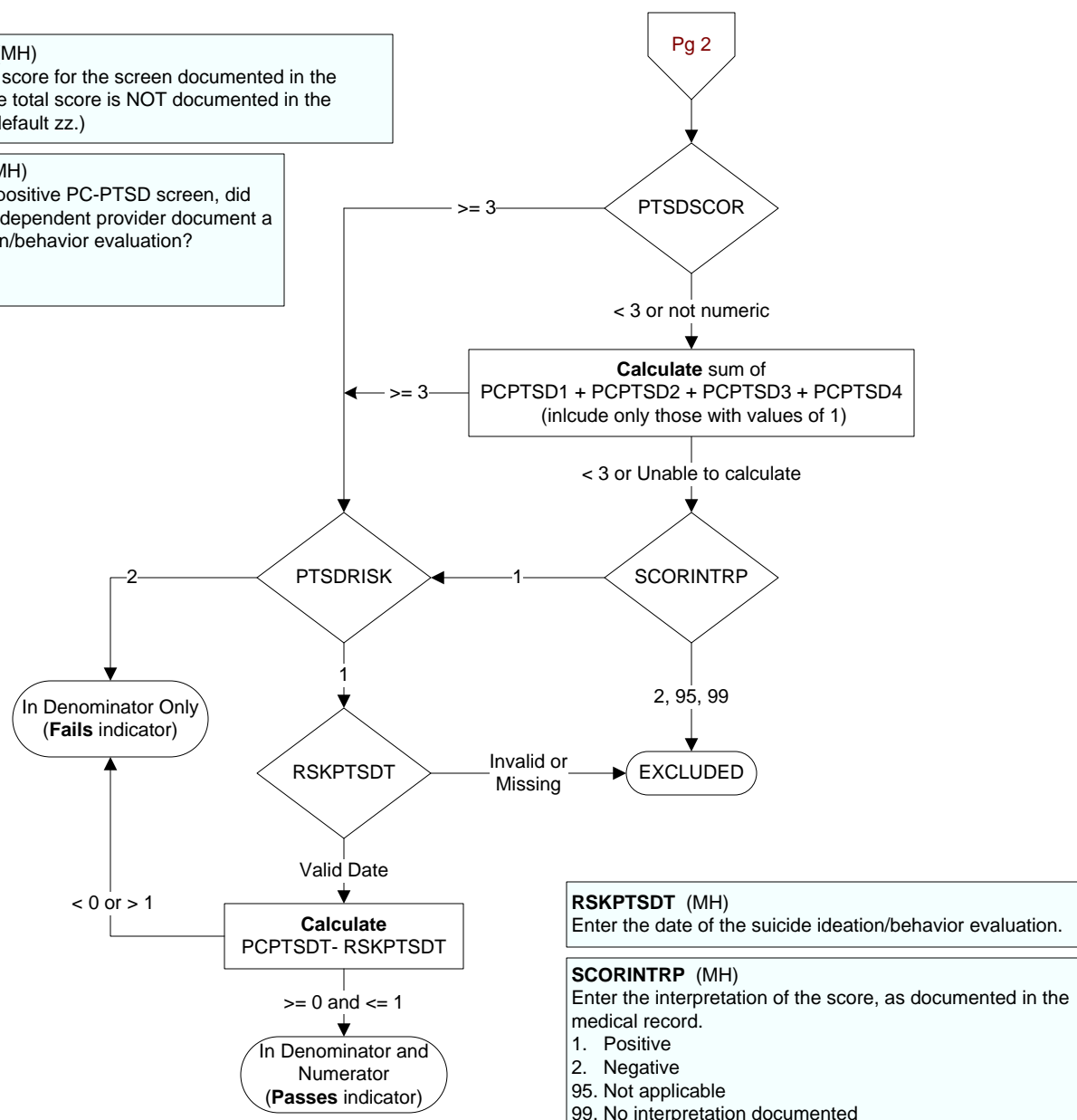
PTSDSCOR (MH)

Enter the total score for the screen documented in the record. (If the total score is NOT documented in the record, enter default zz.)

PTSDRISK (MH)

Following the positive PC-PTSD screen, did the licensed independent provider document a suicide ideation/behavior evaluation?

1. Yes
2. No

**PCPTSD (MH)**

Enter the patient's answers to each of the Primary Care PTSD Screen questions: Have you ever had any experience that was so frightening, horrible, or upsetting that, **IN THE PAST MONTH**, you: (q119 MH)

- PCPTSD1.** Have had any nightmares about it or thought about it when you did not want to?
- PCPTSD2.** Tried hard not to think about it or went out of your way to avoid situations that remind you of it?
- PCPTSD3.** Were constantly on guard, watchful, or easily startled?
- PCPTSD4.** Felt numb or detached from others, activities, or your surroundings?
1. Yes
 2. No
 95. Not applicable
 99. No answer documented