

REVSTAT

REVIEW STATUS (not abstracted)

- 0. Abstraction has not begun
- 1. Abstraction in progress
- 2. Abstraction completed w/o errors
- 3. TVG failure (exclusion)
- 4. Record contains missing required answers (error record)
- 5. Administrative exclusion from all measures

APROCODE (Validation)

Enter the ICD-9-CM principal diagnosis code

DCDATE (Validation)

Enter the date of discharge. (received on pull list and may not be modified)

ADMDT (Validation)

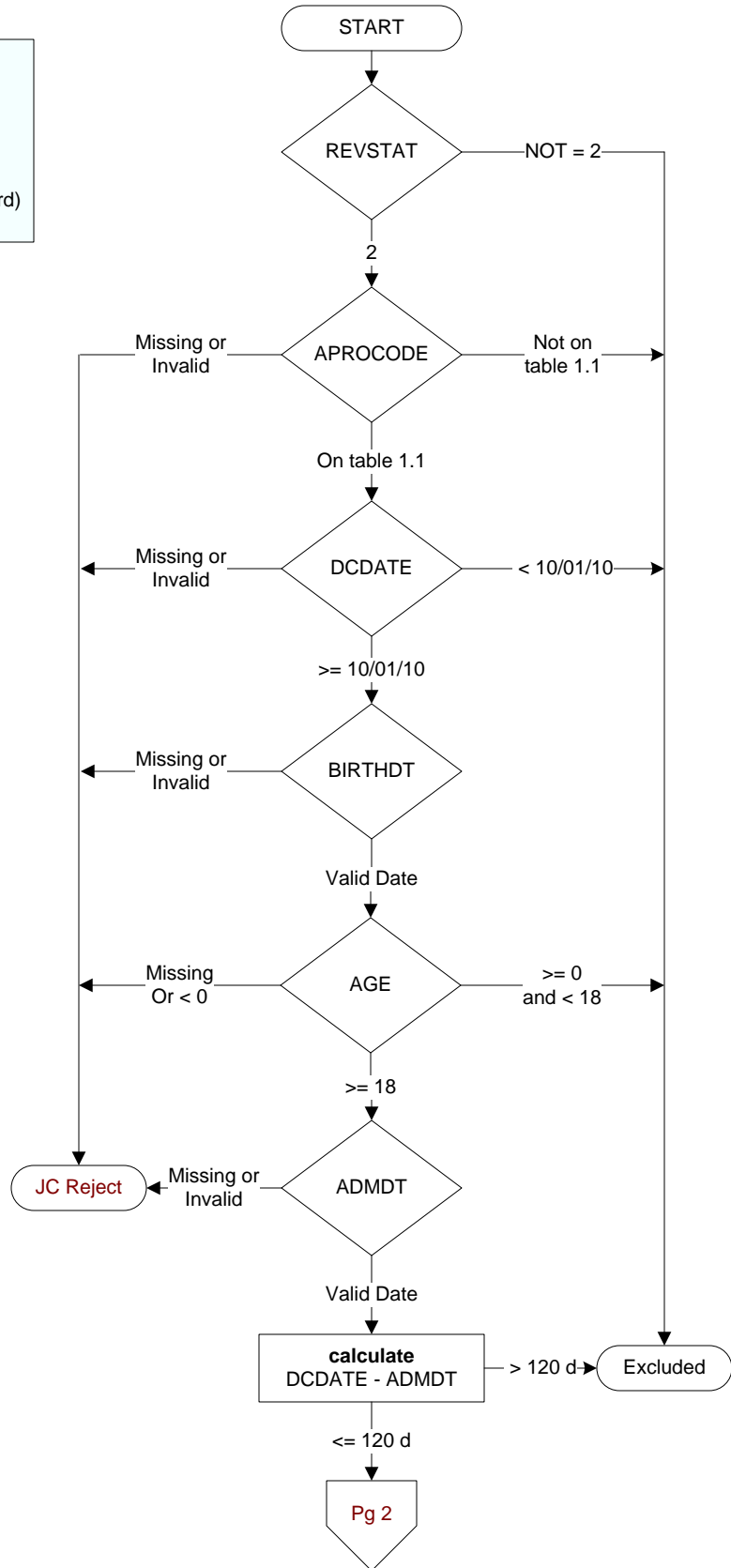
Enter the date the patient was formally admitted to inpatient status at this VAMC.

BIRTHDT (rcvd on pull list)

Patients date of birth.

AGE

calculated field: ADMDT - BIRTHDT



COMFORT (Validation)

When is the earliest physician, APN, or PA documentation of comfort measures only?

1. Day of arrival (day 0) or day after arrival (day 1)
2. Two or more days after arrival (day 2 or greater)
3. Comfort measures only documented during hospital stay, but timing unclear
99. Comfort measures only was not documented by the physician/APN/PA or unable to determine

CLNTRIAL (Validation)

During this hospital stay, was the patient enrolled in a clinical trial in which patients with acute myocardial infarction (AMI) were being studied?

- 1 = Yes
- 2 = No

ACSPTDC (Validation)

Enter the patient's discharge disposition:

1. discharged to home care or self care (routine discharge)
2. discharged/transferred to a short term general hospital for inpatient care
3. discharged/transferred to a skilled nursing facility (SNF) with Medicare certification in anticipation of skilled care
4. Discharged/transferred to a facility that provides custodial or supportive care
5. discharged/transferred to a Designated Cancer Center or Children's Hospital
6. Discharged/transferred to home under care of organized home health service organization in anticipation of covered skilled care
7. left against medical advice or discontinued care
20. expired
21. Discharged/transferred to court/law enforcement
43. Discharged/transferred to a federal health care facility
50. hospice - home
51. hospice - medical facility (certified) providing hospice level of care
61. discharged/transferred to hospital-based Medicare approved swing bed
62. Discharged/transferred to inpatient rehabilitation facility (IRF) including rehabilitation distinct parts of a hospital
63. Discharged/transferred to a Medicare certified long-term care hospital
64. Discharged/transferred to a nursing facility certified under Medicaid but not certified under Medicare
65. Discharged/transferred to a psychiatric hospital or psychiatric distinct part unit of a hospital
66. Discharged/transferred to a Critical Access Hospital (CAH)
70. Discharged/transferred to another Type of Health Care Institution not Defined Elsewhere in this Code List

INPTLDL (Hx & Assmt)

Was an LDL-cholesterol (LDL-c) test in mg/dL (or mg/100ml) performed during this hospital stay?

1. yes
2. no

INPTLDLV (Hx & Assmt)

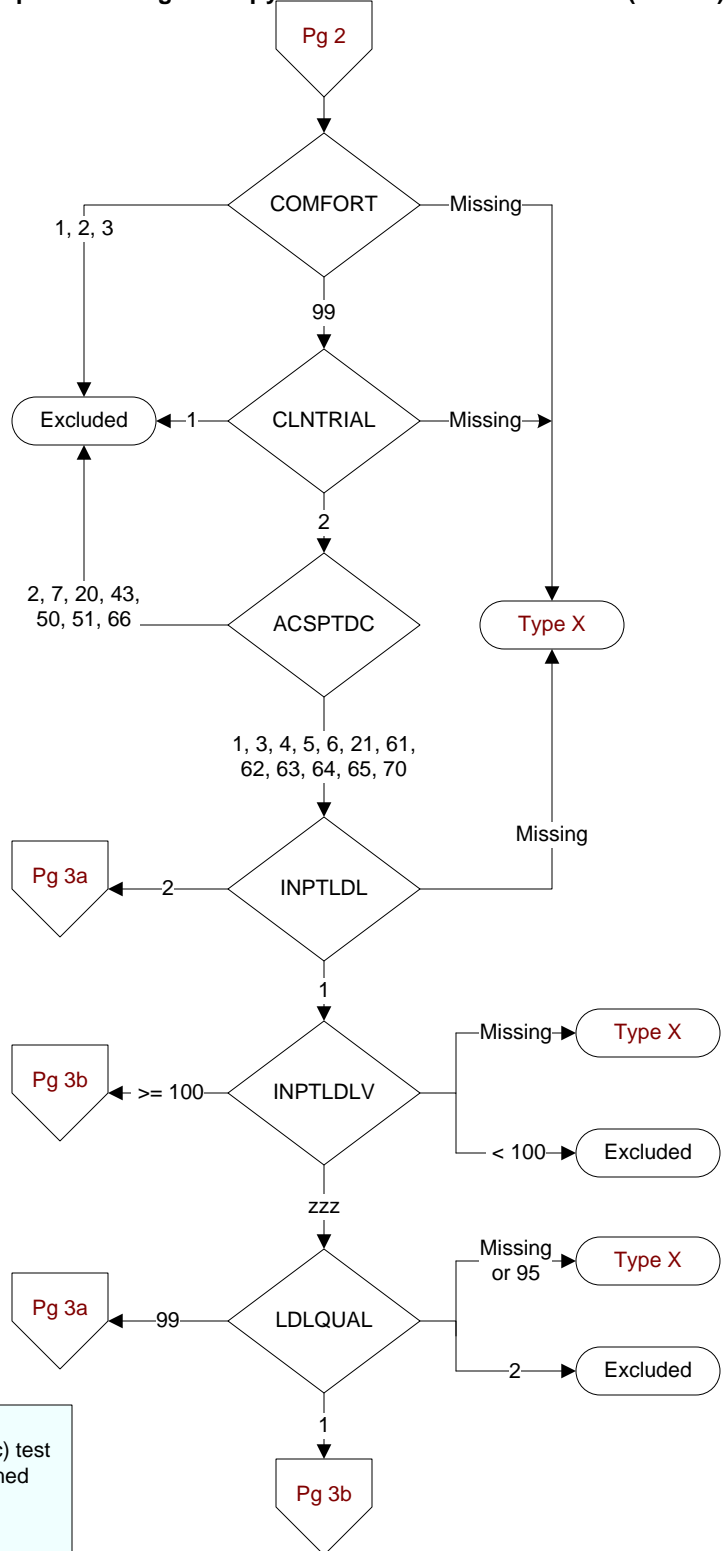
Was an LDL-cholesterol (LDL-c) test in mg/dL (or mg/100ml) performed during this hospital stay?

1. yes
2. no

LDLQUAL (Hx & Assmt)

How did the physician, APN, or PA qualitatively describe the results of the first LDL-cholesterol (LDL-c) performed after hospital arrival?

1. Elevated LDL-c
2. No elevated LDL-c
95. Not applicable
99. Not documented



PRIORLDL (Hx & Assmt)

Does the record document an LDL-cholesterol (LDL-c) test in mg/dL or mg/100ml was performed within one year prior to acute care arrival?

1. Yes
2. No
99. Not documented/unable to determine

PRELDLVL (Hx & Assmt)

Enter the LDL-c value in mg/dL or mg/100ml from the test performed within one year prior to arrival.

PREQUAL (Hx & Assmt)

How did the physician, APN, or PA qualitatively describe the patient's LDL-cholesterol (LDL-c) from the test performed within one year prior to arrival?

1. Elevated LDL-c
2. No elevated LDL-c
95. Not applicable
99. Not documented

STATATDC (Discharge)

Was a statin medication prescribed at discharge?

1. Yes
2. No

NONSTATDC (Discharge)

Was a non-statin lipid-lowering medication prescribed at discharge?

Cholesterol absorption inhibitors: ezetimibe (Zetia)
Nicotinic Acid: niacin extended release tablets (Niaspan), Crystalline niacin, sustained or timed release niacin

Bile Acid Sequestrants: colestipol hydrochloride (Colestid), colestesvelam hydrochloride (Welchol), cholestyramine (Questran) (Locholest)

Fibrates: clofibrate (Atromid-S) (Abitrate), gemfibrozil (Lopid) (Gemcor), fenofibrate (Tricor) (Lofibra), fenofibric acid (Fibricor)

Omega- Fatty Acids (Fish Oils): Marine-derived omega-3 fatty acid supplements (DHA/EPA)

1. Yes
2. No

NOSTAWHY (Discharge)

Is there documentation of a reason for not prescribing a statin medication at discharge?

1. Statin medication allergy
95. Not applicable
97. Other reason documented by a physician/APN/PA or pharmacist for not prescribing a statin medication at discharge
98. Patient refusal of ALL statin medications documented by physician/APN/PA or pharmacist
99. No documented reason

NOLIPWHY2 (Discharge)

Is there documentation of a reason for not prescribing a non-statin lipid-lowering medication at discharge?

1. Non-statin lipid-lowering medication allergy
95. Not applicable
97. Other reason documented by a physician/APN/PA or pharmacist for not prescribing a non-statin lipid-lowering medication at discharge
98. Patient refusal of ALL non-statin lipid-lowering medications documented by physician/APN/PA or pharmacist
99. No documented reason

